

CURVE DI PRESTAZIONE • PERFORMANCE CURVES • COURBES DE PERFORMANCE

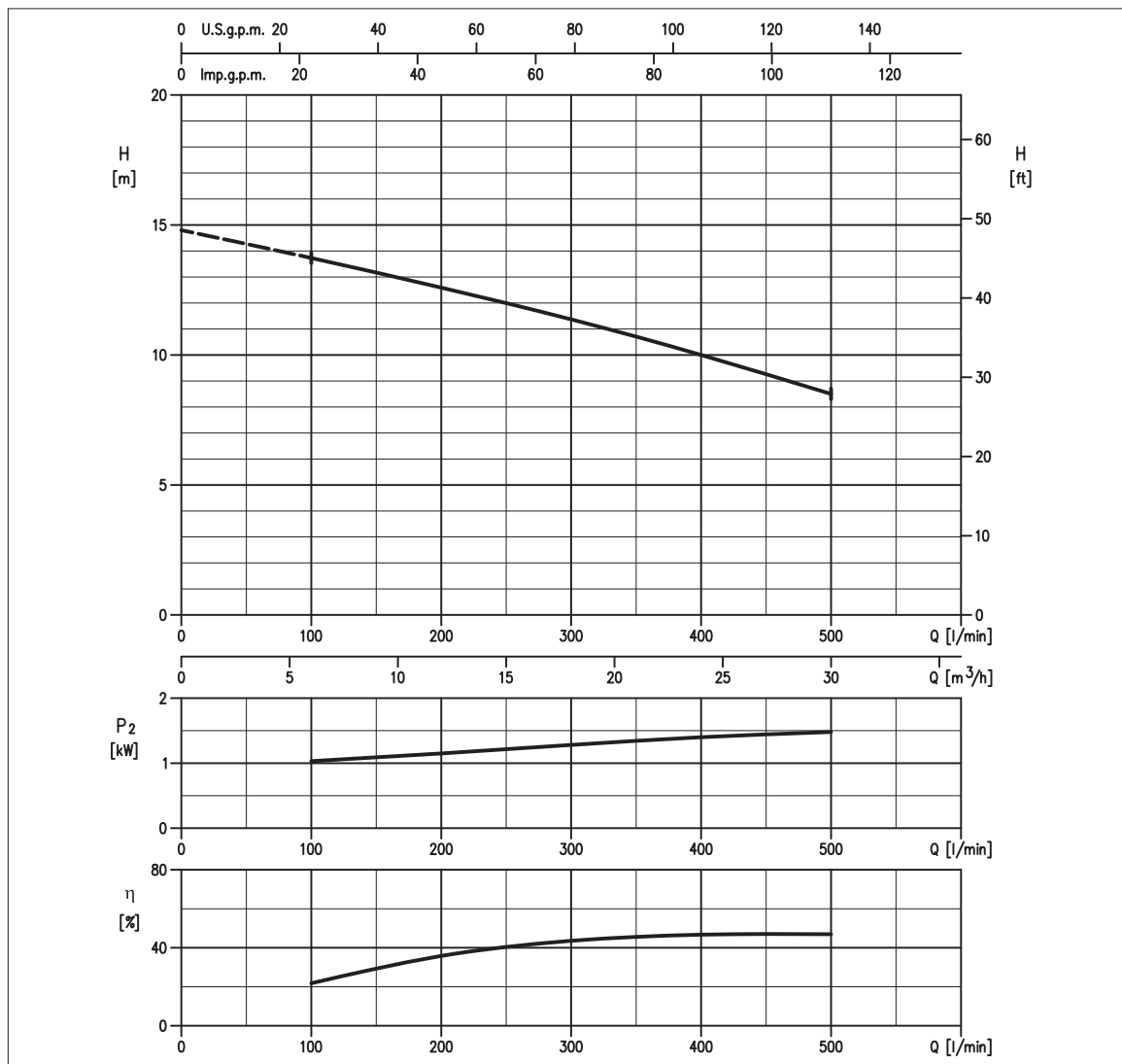


TABELLA PRESTAZIONI • PERFORMANCE TABLE • TABLEAU DE PERFORMANCES

Modello Model Modèle	P ₂		Q = Portata / Flow rate / Débit														
	[HP]	[kW]	l/min 100 m³/h 6	250 15	300 18	400 24	500 30	700 42	900 54	1000 60	1100 66	1200 72	1400 84	1600 96	2000 120	2400 144	2500 150
65DL51.5W/C	2	1.5	13,7	12,0	11,4	10,0	8,5	-	-	-	-	-	-	-	-	-	-

H = Prevalenza / Head / Hauteur manometrique totale [m]

IDRAULICA • HYDRAULIC • HYDRAULIQUE

Girante Impeller Roue	MONOCANALE APERTA CON SISTEMA DI TAGLIO OPEN SINGLE-CHANNEL WITH CUTTER MONOCANALE OUVERTE AVEC COUPEAU
Mandata Flanges Brides	DN 65 mm
Massimo diametro passaggi liberi Maximum solid diameter Passage libre maximum	DN 35 mm corpi solidi DN 195 mm corpi fibrosi
Temperatura massima del liquido Maximum liquid temperature Température maximale du liquide	40°C
Doppia tenuta meccanica Double mechanical seal Double garniture mécanique	Cer/Carb/NBR Sic/Sic/NBR

TIPO POMPA • PUMP TYPE • TYPE DE POMPE

Peso Weight Poids	52 kg	Costruzione Construction Construction	GHISA CAST IRON FONTE
-------------------------	--------------	---	--

MOTORE • MOTOR • MOTEUR

Tensione Power Tension	380 - 415V ±10%, 50 Hz DOL	Cavo Cable Câble	10 m
Avviamento ora Starts per hour Nombre de démarrages par huere	10	P ₂	1.5 kW
Classe di isolamento Insulation class Classe d'isolation	F	Voltaggio	380 V 400 V 415 V
Grado di protezione Protection degree Indice de protection	IP 68	Corrente di avviamento Start Current Ampérage au démarrage	23,7 A 24,5 A 23,6 A
		Corrente 100% Current 100% Ampérage 100%	4,1 A 3,9 A 4,1 A
		Velocità di rotazione (rpm) Rotation speed (rpm) Vitesse de rotation (rpm)	1450



DIMENSIONI • DIMENSIONS • DIMENSIONS

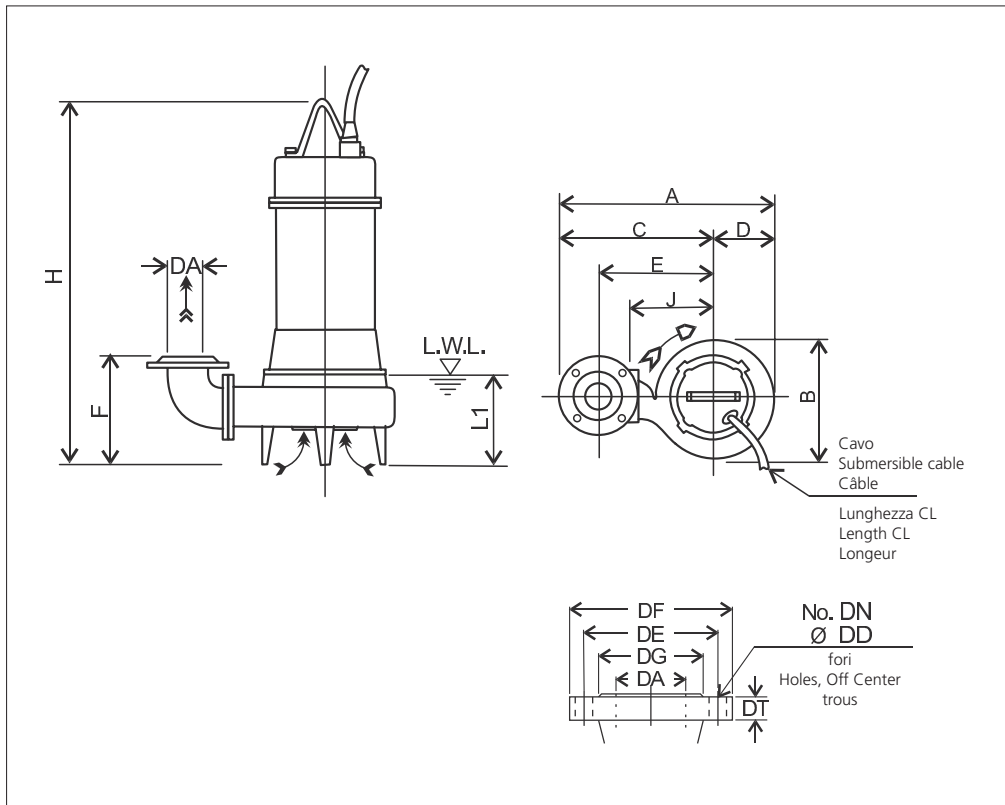
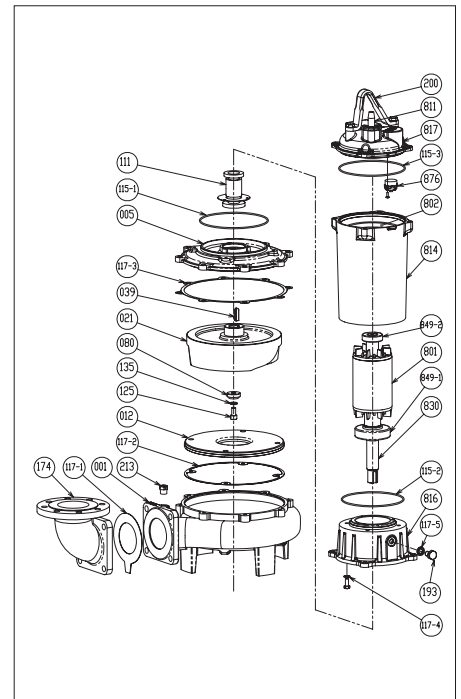


TABELLA DIMENSIONI • DIMENSIONS TABLE • TABLEAU DE DIMENSIONS

DA	Modello Model Modèle	[kW]	A	B	C	D	E	F	H	J	L1 (*)	CL [m]	Peso Weight Poids [kg]
65	65DL51.5W/C	1.5	497	291	353	144	265	200	576	200	140	10	52

RICAMBI • REPLACEMENT PARTS • PIÈCES DE RECHANGE



001	Corpo pompa - Pump casing - Corps de la pompe
021	Girante - Impeller - Roue
039	Linguetta - Key - Languette
080	Bussola - Bushing - Bague d'usure
111	Tenuta meccanica - Mechanical seal - Garniture mécanique
115-2	Anello OR - O-ring - Bague OR
115-3	Anello OR - O-ring - Bague OR
115-1	Anello OR - O-ring - Bague OR
117-1	Guarnizione - Gasket - Joint
117-2	Guarnizione - Gasket - Joint
117-3	Guarnizione - Gasket - Joint
125	Vite - Screw - Vis
135	Rondella - Washer - Rondelle d'étanchiété
811	Cavo - Cable - Câble
849-1	Cuscinetto - Bearing - Coussinet
849-2	Cuscinetto - Bearing - Coussinet
876	Termoprotettore - Auto cut - Protection thermique

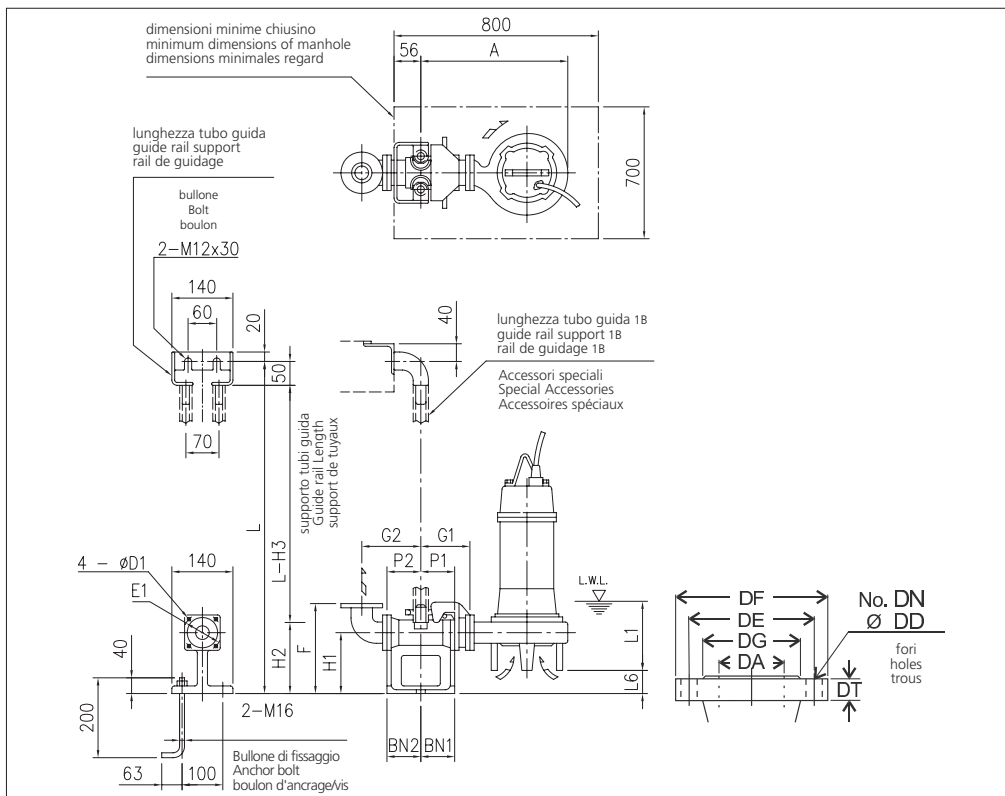
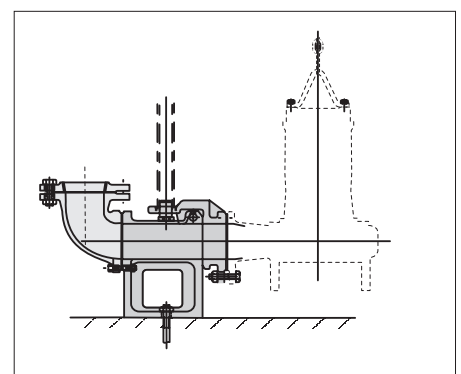


TABELLA DIMENSIONI QDC • QDC DIMENSIONS TABLE • TABLEAU DE DIMENSIONS QDC

DA	Modello Model Modèle	[kW]	A	P1	P2	G1	G2	F	H1	H2	H3	L1 (*)	L6	BN1	BN2	D1	E1	QDC	
																		Mod.	[kg]
65	65DL51.5W/C	1.5	464	75	95	120	160	250	145	190	240	140	50	75	95	12	140	LM65	14

MODELLO KIT SCIVOLO DISCESA (QDC) QDC MODEL MODÈLE KIT PIED D'ASSISE (QDC) LM65



MONOCANALE APERTA CON SISTEMA DI TAGLIO
OPEN SINGLE-CHANNEL WITH CUTTER
MONOCANALE OUVERTE AVEC COUPEAU

CURVE DI PRESTAZIONE • PERFORMANCE CURVES • COURBES DE PERFORMANCE

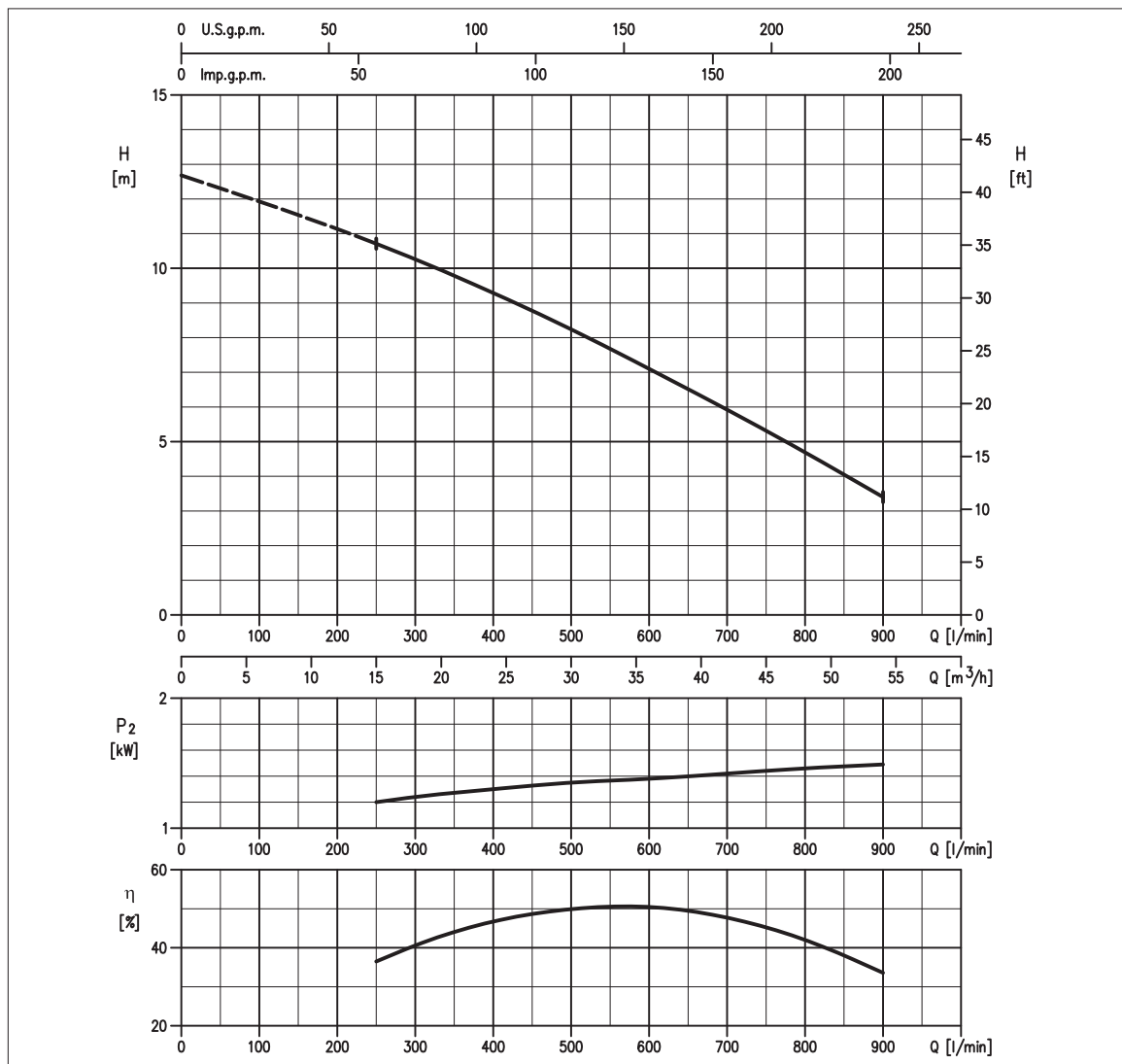


TABELLA PRESTAZIONI • PERFORMANCE TABLE • TABLEAU DE PERFORMANCES

Modello Model Modèle	P ₂		Q = Portata / Flow rate / Débit														
	[HP]	[kW]	l/min 100 m ³ /h 6	250 15	300 18	400 24	500 30	700 42	900 54	1000 60	1100 66	1200 72	1400 84	1600 96	2000 120	2400 144	2500 150
80DL51.5W/C	2	1.5	-	10,7	10,3	9,3	8,2	5,9	3,4	-	-	-	-	-	-	-	-

H = Prevalenza / Head / Hauteur manométrique totale [m]

IDRAULICA • HYDRAULIC • HYDRAULIQUE

Girante Impeller Roue	MONOCANALE APERTA CON SISTEMA DI TAGLIO OPEN SINGLE-CHANNEL WITH CUTTER MONOCANALE OUVERTE AVEC COUPEAU
Mandata Flanges Brides	DN 80 mm
Massimo diametro passaggi liberi Maximum solid diameter Passage libre maximum	DN 50 mm corpi solidi DN 240 mm corpi fibrosi
Temperatura massima del liquido Maximum liquid temperature Température maximale du liquide	40°C
Doppia tenuta meccanica Double mechanical seal Double garniture mécanique	Cer/Carb/NBR SiC/SiC/NBR

TIPO POMPA • PUMP TYPE • TYPE DE POMPE

Peso Weight Poids	55 kg	Costruzione Construction Construction	GHISA CAST IRON FONTE
-------------------------	--------------	---	--------------------------------------

MOTORE • MOTOR • MOTEUR

Tensione Power Tension	380 - 415V ±10%, 50 Hz DOL	Cavo Cable Câble	10 m
Avviamento ora Starts per hour Nombre de démarrages par heure	10	P ₂	1.5 kW
Classe di isolamento Insulation class Classe d'isolation	F	Voltaggio	380 V 400 V 415 V
Grado di protezione Protection degree Indice de protection	IP 68	Corrente di avviamento Start Current Ampérage au démarrage	23,7 A 24,5 A 23,6 A
		Corrente 100% Current 100% Ampérage 100%	4,1 A 3,9 A 4,1 A
		Velocità di rotazione (rpm) Rotation speed (rpm) Vitesse de rotation (rpm)	1450



DIMENSIONI • DIMENSIONS • DIMENSIONS

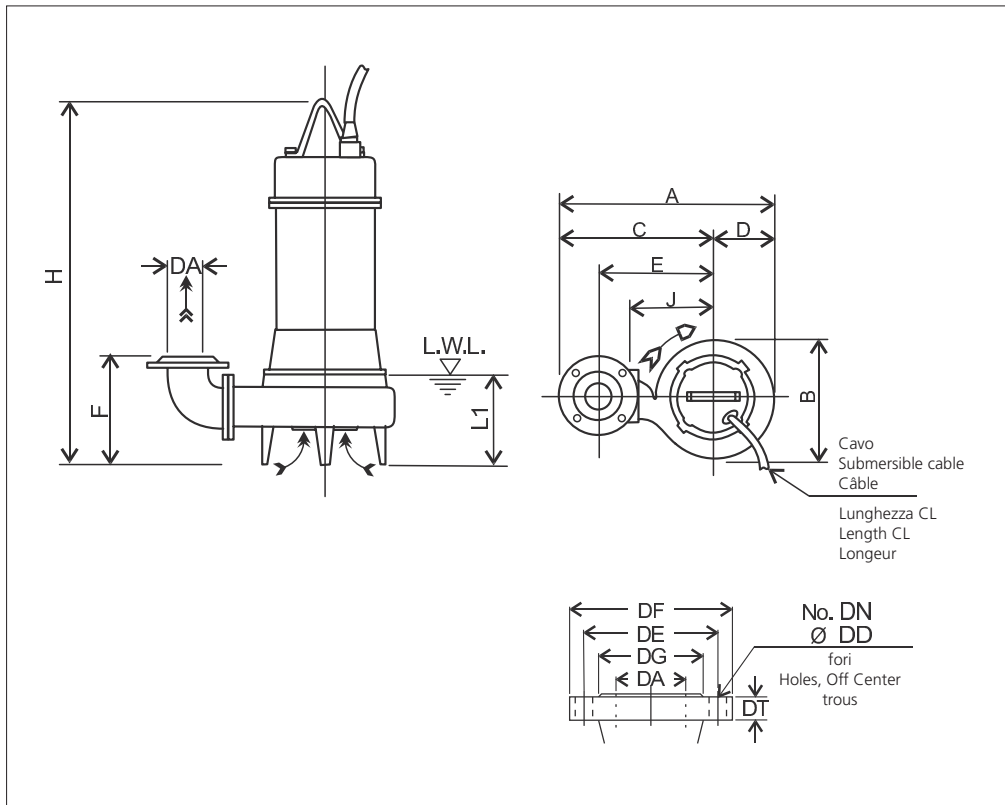
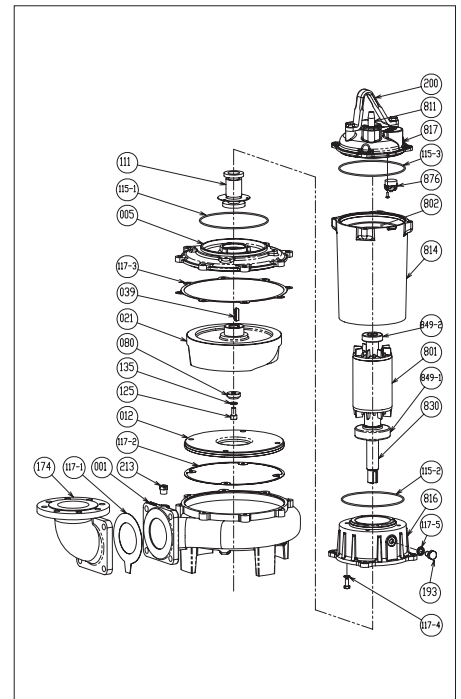


TABELLA DIMENSIONI • DIMENSIONS TABLE • TABLEAU DE DIMENSIONS

DA	Modello Model Modèle	[kW]	A	B	C	D	E	F	H	J	L1 (*)	CL [m]	Peso Weight Poids [kg]
80	80DL51.5W/C	1.5	524	292	378	146	285	220	597	210	165	10	55

RICAMBI • REPLACEMENT PARTS • PIÈCES DE RECHANGE



001	Corpo pompa - Pump casing - Corps de la pompe
021	Girante - Impeller - Roue
039	Linguetta - Key - Languette
080	Bussola - Bushing - Bague d'usure
111	Tenuta meccanica - Mechanical seal Garniture mécanique
115-2	Anello OR - O-ring - Bague OR
115-3	Anello OR - O-ring - Bague OR
115-1	Anello OR - O-ring - Bague OR
117-1	Guarnizione - Gasket - Joint
117-2	Guarnizione - Gasket - Joint
117-3	Guarnizione - Gasket - Joint
125	Vite - Screw - Vis
135	Rondella - Washer - Rondelle d'étanchiété
811	Cavo - Cable - Câble
849-1	Cuscinetto - Bearing - Coussinet
849-2	Cuscinetto - Bearing - Coussinet
876	Termoprotettore - Auto cut - Protection thermique

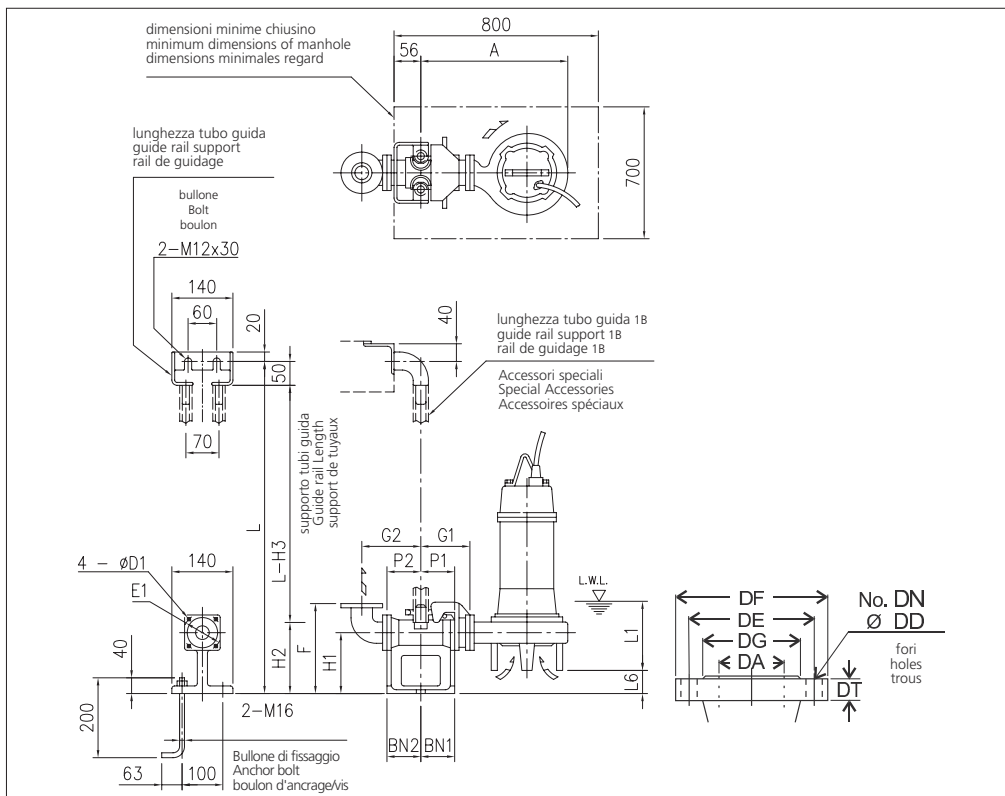
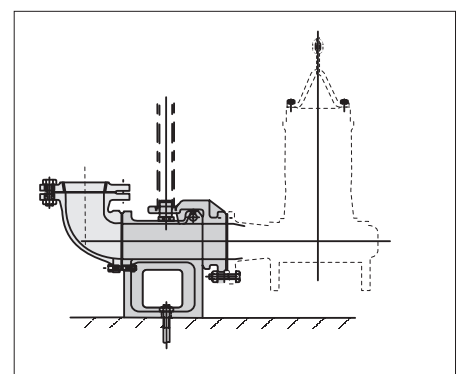


TABELLA DIMENSIONI QDC • QDC DIMENSIONS TABLE • TABLEAU DE DIMENSIONS QDC

DA	Modello Model Modèle	[kW]	A	P1	P2	G1	G2	F	H1	H2	H3	L1 (*)	L6	BN1	BN2	D1	E1	QDC	
																		Mod.	[kg]
80	80DL51.5W/C	1.5	481	75	90	125	165	285	175	230	280	165	65	75	90	15	155	LM80	17

MODELLO KIT SCIVOLO DISCESA (QDC) QDC MODEL MODÈLE KIT PIED D'ASSISE (QDC) LM80



MONOCANALE APERTA CON SISTEMA DI TAGLIO
OPEN SINGLE-CHANNEL WITH CUTTER
MONOCANALE OUVERTE AVEC COUPEAU

CURVE DI PRESTAZIONE • PERFORMANCE CURVES • COURBES DE PERFORMANCE

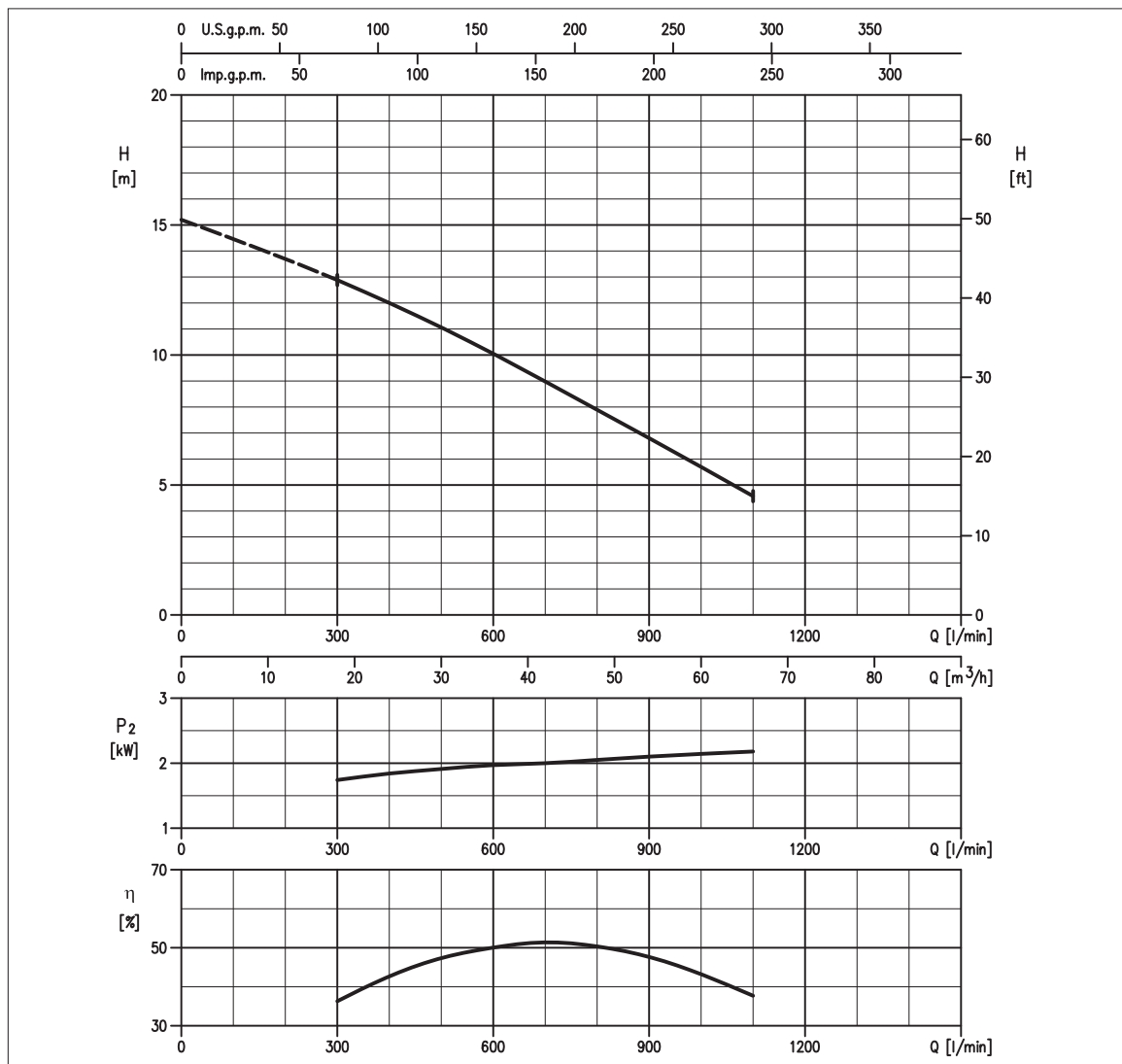


TABELLA PRESTAZIONI • PERFORMANCE TABLE • TABLEAU DE PERFORMANCES

Modello Model Modèle	P ₂		Q = Portata / Flow rate / Débit														
	[HP]	[kW]	l/min 100 m ³ /h 6	250 15	300 18	400 24	500 30	700 42	900 54	1000 60	1100 66	1200 72	1400 84	1600 96	2000 120	2400 144	2500 150
80DL52.2W/C	3	2.2	-	-	12,9	12,0	11,1	9,0	6,8	5,7	4,6	-	-	-	-	-	-

H = Prevalenza / Head / Hauteur manométrique totale [m]

IDRAULICA • HYDRAULIC • HYDRAULIQUE

Girante Impeller Roue	MONOCANALE APERTA CON SISTEMA DI TAGLIO OPEN SINGLE-CHANNEL WITH CUTTER MONOCANALE OUVERTE AVEC COUPEAU
Mandata Flanges Brides	DN 80 mm
Massimo diametro passaggi liberi Maximum solid diameter Passage libre maximum	DN 50 mm corpi solidi DN 240 mm corpi fibrosi
Temperatura massima del liquido Maximum liquid temperature Température maximale du liquide	40°C
Doppia tenuta meccanica Double mechanical seal Double garniture mécanique	Cer/Carb/NBR Sic/Sic/NBR

TIPO POMPA • PUMP TYPE • TYPE DE POMPE

Peso Weight Poids	67 kg	Costruzione Construction Construction	GHISA CAST IRON FORTE
-------------------------	--------------	---	--

MOTORE • MOTOR • MOTEUR

Tensione Power Tension	380 - 415V ±10%, 50 Hz DOL	Cavo Cable Câble	10 m
Avviamento ora Starts per hour Nombre de démarrages par heure	10	P ₂	2.2 kW
Classe di isolamento Insulation class Classe d'isolation	F	Voltaggio	380 V 400 V 415 V
Grado di protezione Protection degree Indice de protection	IP 68	Corrente di avviamento Start Current Ampérage au démarrage	29,3 A 30 A 32 A
		Corrente 100% Current 100% Ampérage 100%	5,7 A 5,2 A 5,2 A
		Velocità di rotazione (rpm) Rotation speed (rpm) Vitesse de rotation (rpm)	1450



DIMENSIONI • DIMENSIONS • DIMENSIONS

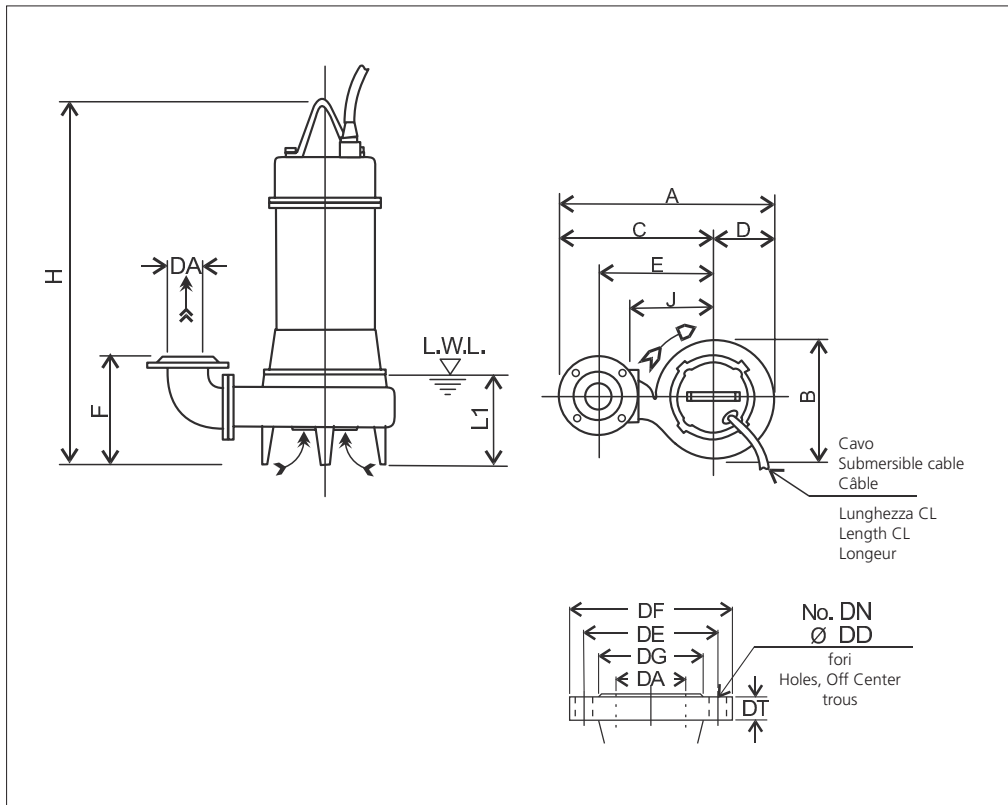


TABELLA DIMENSIONI • DIMENSIONS TABLE • TABLEAU DE DIMENSIONS

DA	Modello Model Modèle	[kW]	A	B	C	D	E	F	H	J	L1 (*)	CL [m]	Peso Weight Poids [kg]
80	80DL52.2W/C	2.2	542	308	388	154	295	220	654	220	165	10	67

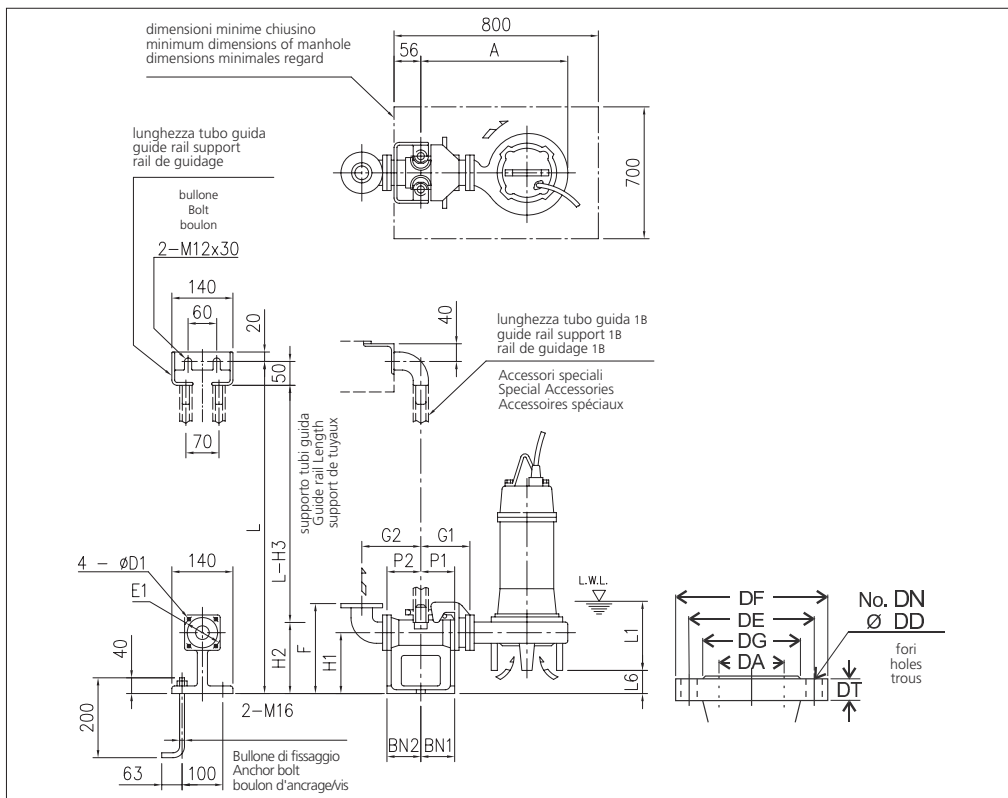
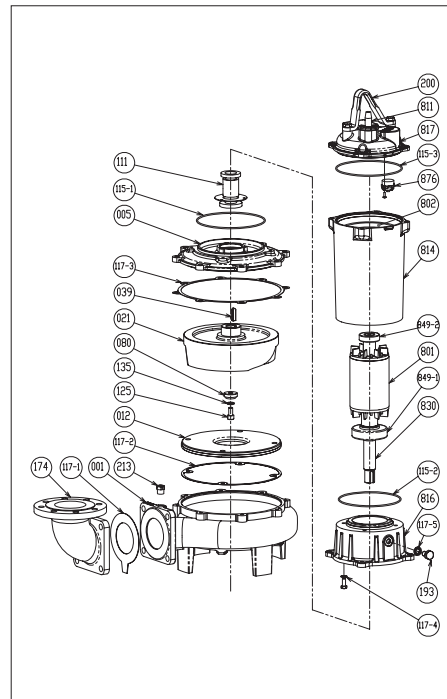


TABELLA DIMENSIONI QDC • QDC DIMENSIONS TABLE • TABLEAU DE DIMENSIONS QDC

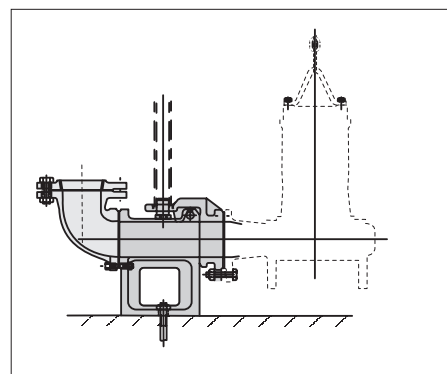
DA	Modello Model Modèle	[kW]	A	P1	P2	G1	G2	F	H1	H2	H3	L1 (*)	L6	BN1	BN2	D1	E1	QDC	
																		Mod.	[kg]
80	80DL52.2W/C	2.2	499	75	90	125	165	285	175	230	280	165	65	75	90	15	155	LM80	17

RICAMBI • REPLACEMENT PARTS • PIÈCES DE RECHANGE



001	Corpo pompa - Pump casing - Corps de la pompe
021	Girante - Impeller - Roue
039	Linguetta - Key - Languette
080	Bussola - Bushing - Bague d'usure
111	Tenuta meccanica - Mechanical seal Garniture mécanique
115-2	Anello OR - O-ring - Bague OR
115-3	Anello OR - O-ring - Bague OR
115-1	Anello OR - O-ring - Bague OR
117-1	Guarnizione - Gasket - Joint
117-2	Guarnizione - Gasket - Joint
117-3	Guarnizione - Gasket - Joint
125	Vite - Screw - Vis
135	Rondella - Washer - Rondelle d'étanchiété
811	Cavo - Cable - Câble
849-1	Cuscinetto - Bearing - Coussinet
849-2	Cuscinetto - Bearing - Coussinet
876	Termoprotettore - Auto cut - Protection thermique

MODELLO KIT SCIVOLO DISCESA (QDC) QDC MODEL MODÈLE KIT PIED D'ASSISE (QDC) LM80



MONOCANALE APERTA CON SISTEMA DI TAGLIO
OPEN SINGLE-CHANNEL WITH CUTTER
MONOCANALE OUVERTE AVEC COUPEAU

CURVE DI PRESTAZIONE • PERFORMANCE CURVES • COURBES DE PERFORMANCE

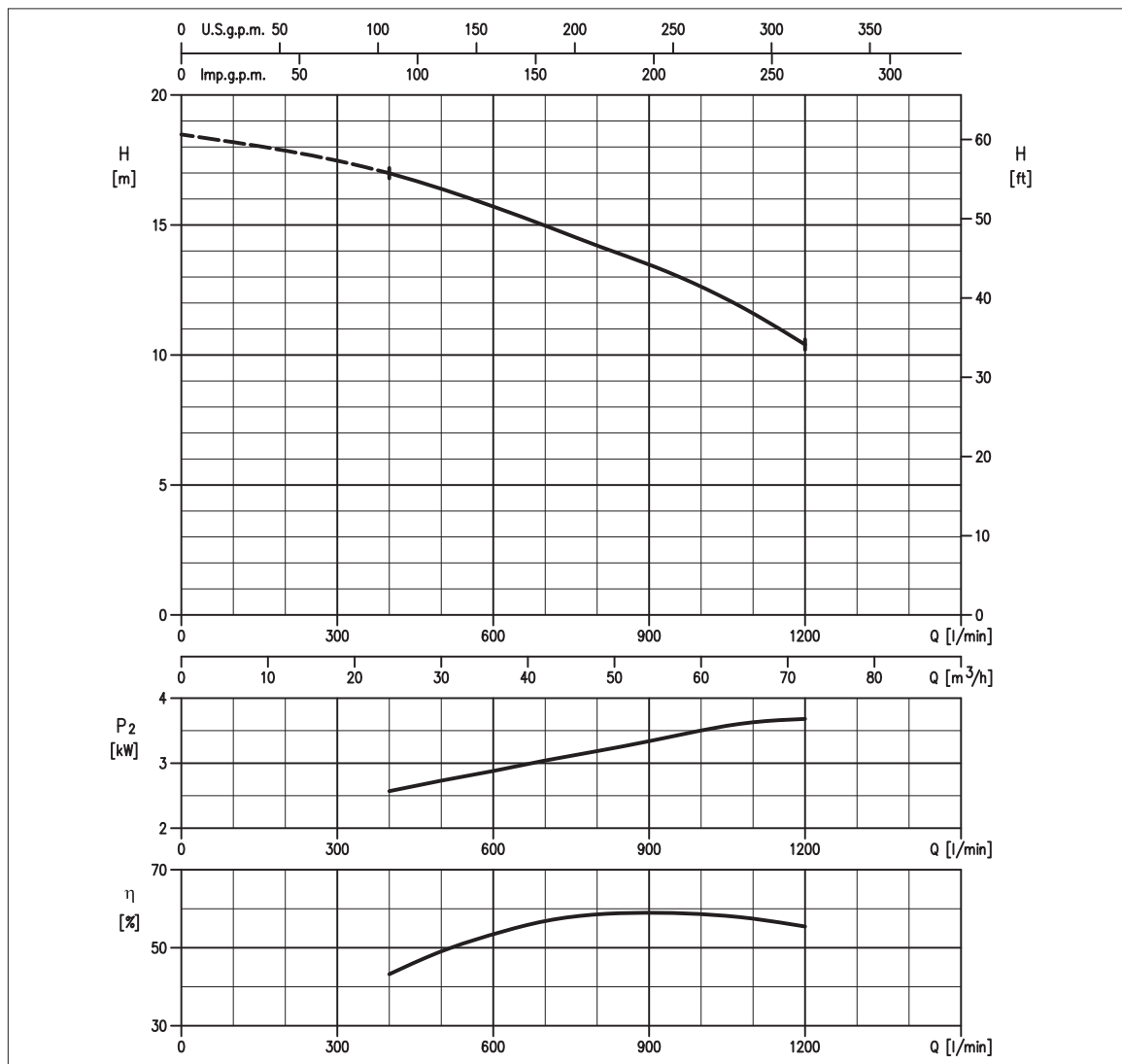


TABELLA PRESTAZIONI • PERFORMANCE TABLE • TABLEAU DE PERFORMANCES

Modello Model Modèle	P ₂		Q = Portata / Flow rate / Débit														
	[HP]	[kW]	l/min 100 m ³ /h 6	250 15	300 18	400 24	500 30	700 42	900 54	1000 60	1100 66	1200 72	1400 84	1600 96	2000 120	2400 144	2500 150
80DL53.7W/C	5	3.7	-	-	-	17,0	16,4	14,9	13,4	12,6	11,6	10,4	-	-	-	-	-

H = Prevalenza / Head / Hauteur manométrique totale [m]

IDRAULICA • HYDRAULIC • HYDRAULIQUE

Girante Impeller Roue	MONOCANALE APERTA CON SISTEMA DI TAGLIO OPEN SINGLE-CHANNEL WITH CUTTER MONOCANALE OUVERTE AVEC COUPEAU
Mandata Flanges Brides	DN 80 mm
Massimo diametro passaggi liberi Maximum solid diameter Passage libre maximum	DN 50 mm corpi solidi DN 240 mm corpi fibrosi
Temperatura massima del liquido Maximum liquid temperature Température maximale du liquide	40°C
Doppia tenuta meccanica Double mechanical seal Double garniture mécanique	Cer/Carb/NBR Sic/Sic/NBR

TIPO POMPA • PUMP TYPE • TYPE DE POMPE

Peso Weight Poids	75 kg	Costruzione Construction Construction	GHISA CAST IRON FONTE
-------------------------	--------------	---	--

MOTORE • MOTOR • MOTEUR

Tensione Power Tension	380 - 415V ±10%, 50 Hz DOL	Cavo Cable Câble	10 m
Avviamento ora Starts per hour Nombre de démarrages par huere	10	P ₂	3.7 kW
Classe di isolamento Insulation class Classe d'isolation	F	Voltaggio	380 V 400 V 415 V
Grado di protezione Protection degree Indice de protection	IP 68	Corrente di avviamento Start Current Ampérage au démarrage	49,4 A 47,5 A 49 A
		Corrente 100% Current 100% Ampérage 100%	8,4 A 8,3 A 7,6 A
		Velocità di rotazione (rpm) Rotation speed (rpm) Vitesse de rotation (rpm)	1450



DIMENSIONI • DIMENSIONS • DIMENSIONS

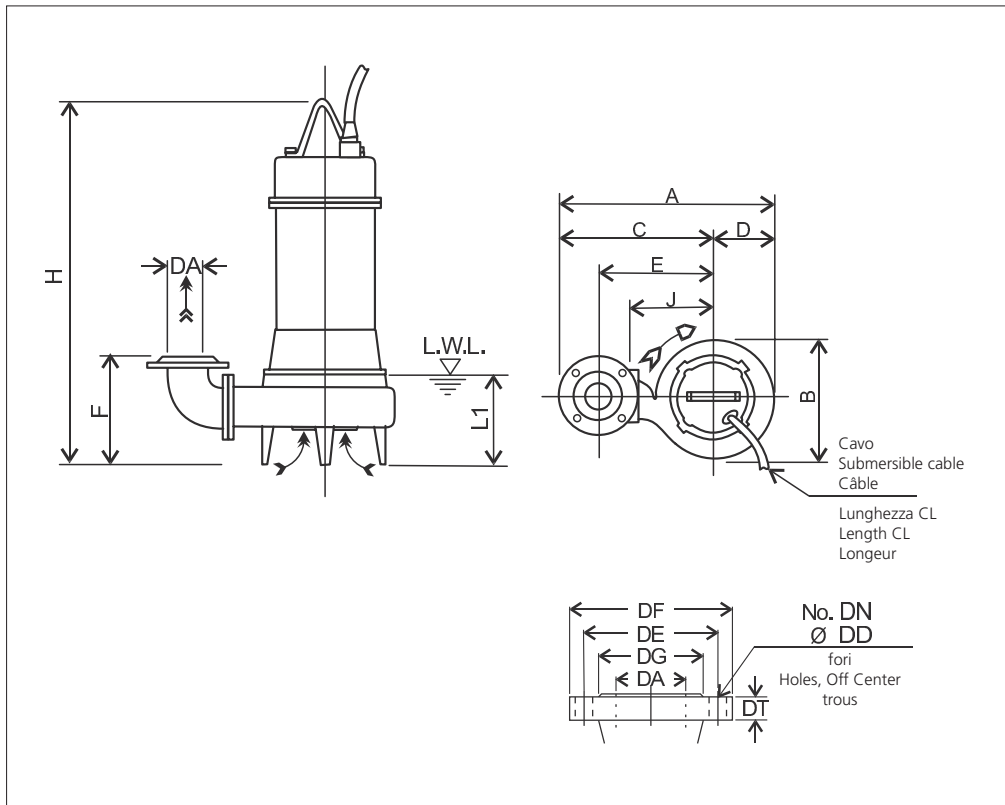
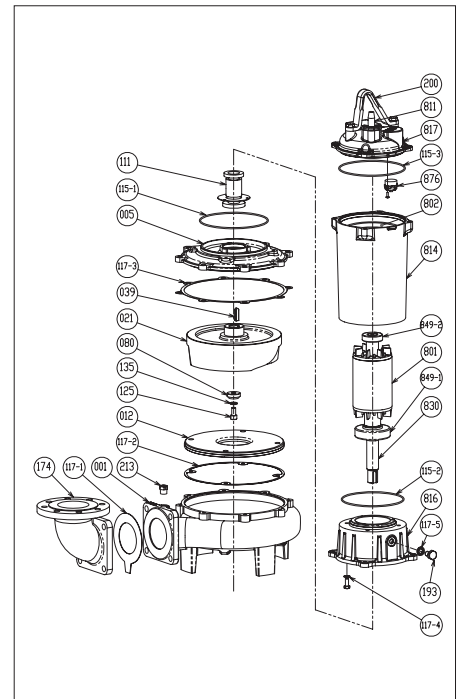


TABELLA DIMENSIONI • DIMENSIONS TABLE • TABLEAU DE DIMENSIONS

DA	Modello Model Modèle	[kW]	A	B	C	D	E	F	H	J	L1 (*)	CL [m]	Peso Weight Poids [kg]
80	80DL53.7W/C	3.7	567	328	403	164	310	220	687	235	165	10	75

RICAMBI • REPLACEMENT PARTS • PIÈCES DE RECHANGE



001	Corpo pompa - Pump casing - Corps de la pompe
021	Girante - Impeller - Roue
039	Linguetta - Key - Languette
080	Bussola - Bushing - Bague d'usure
111	Tenuta meccanica - Mechanical seal Garniture mécanique
115-2	Anello OR - O-ring - Bague OR
115-3	Anello OR - O-ring - Bague OR
115-1	Anello OR - O-ring - Bague OR
117-1	Guarnizione - Gasket - Joint
117-2	Guarnizione - Gasket - Joint
117-3	Guarnizione - Gasket - Joint
125	Vite - Screw - Vis
135	Rondella - Washer - Rondelle d'étanchiété
811	Cavo - Cable - Câble
849-1	Cuscinetto - Bearing - Coussinet
849-2	Cuscinetto - Bearing - Coussinet
876	Termoprotettore - Auto cut - Protection thermique

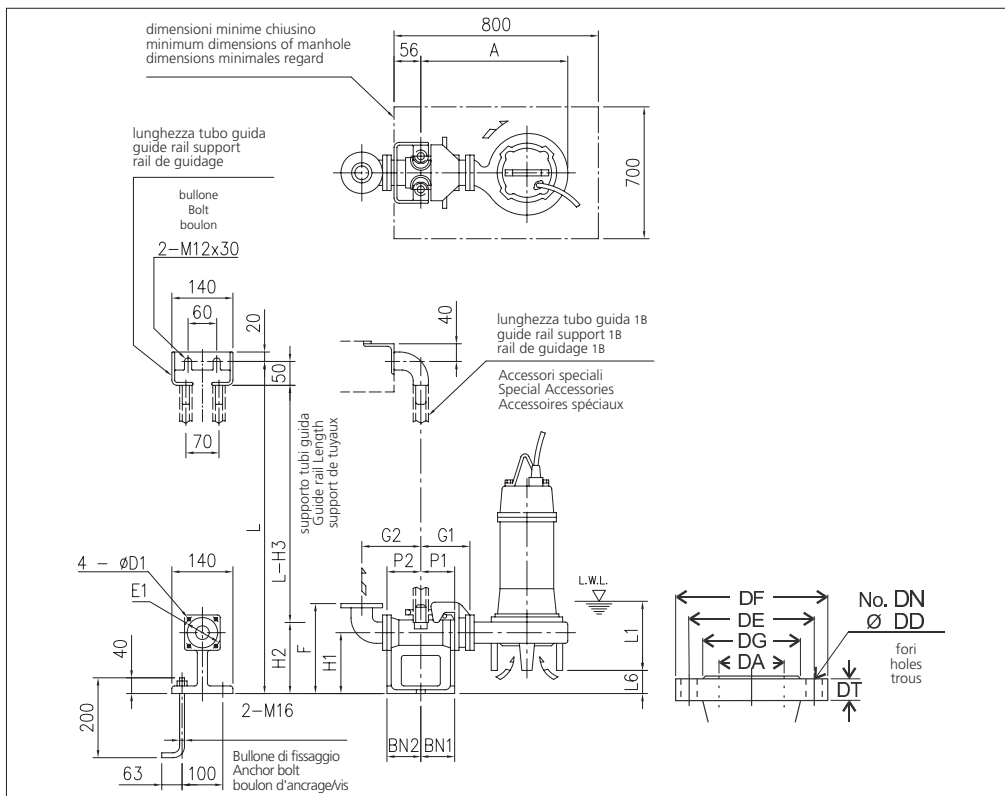
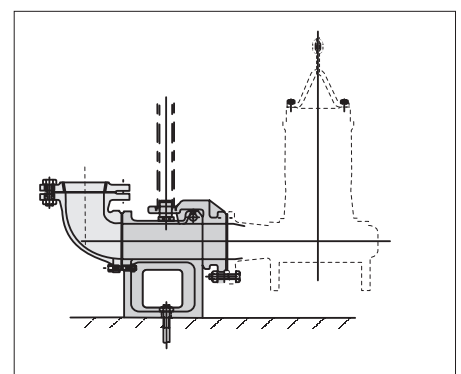


TABELLA DIMENSIONI QDC • QDC DIMENSIONS TABLE • TABLEAU DE DIMENSIONS QDC

DA	Modello Model Modèle	[kW]	A	P1	P2	G1	G2	F	H1	H2	H3	L1 (*)	L6	BN1	BN2	D1	E1	QDC	
																		Mod.	[kg]
80	80DL53.7W/C	3.7	524	75	90	125	165	285	175	230	280	165	65	75	90	15	155	LM80	17

MODELLO KIT SCIVOLO DISCESA (QDC) QDC MODEL MODÈLE KIT PIED D'ASSISE (QDC) LM80



MONOCANALE APERTA CON SISTEMA DI TAGLIO
OPEN SINGLE-CHANNEL WITH CUTTER
MONOCANALE OUVERTE AVEC COUPEAU

CURVE DI PRESTAZIONE • PERFORMANCE CURVES • COURBES DE PERFORMANCE

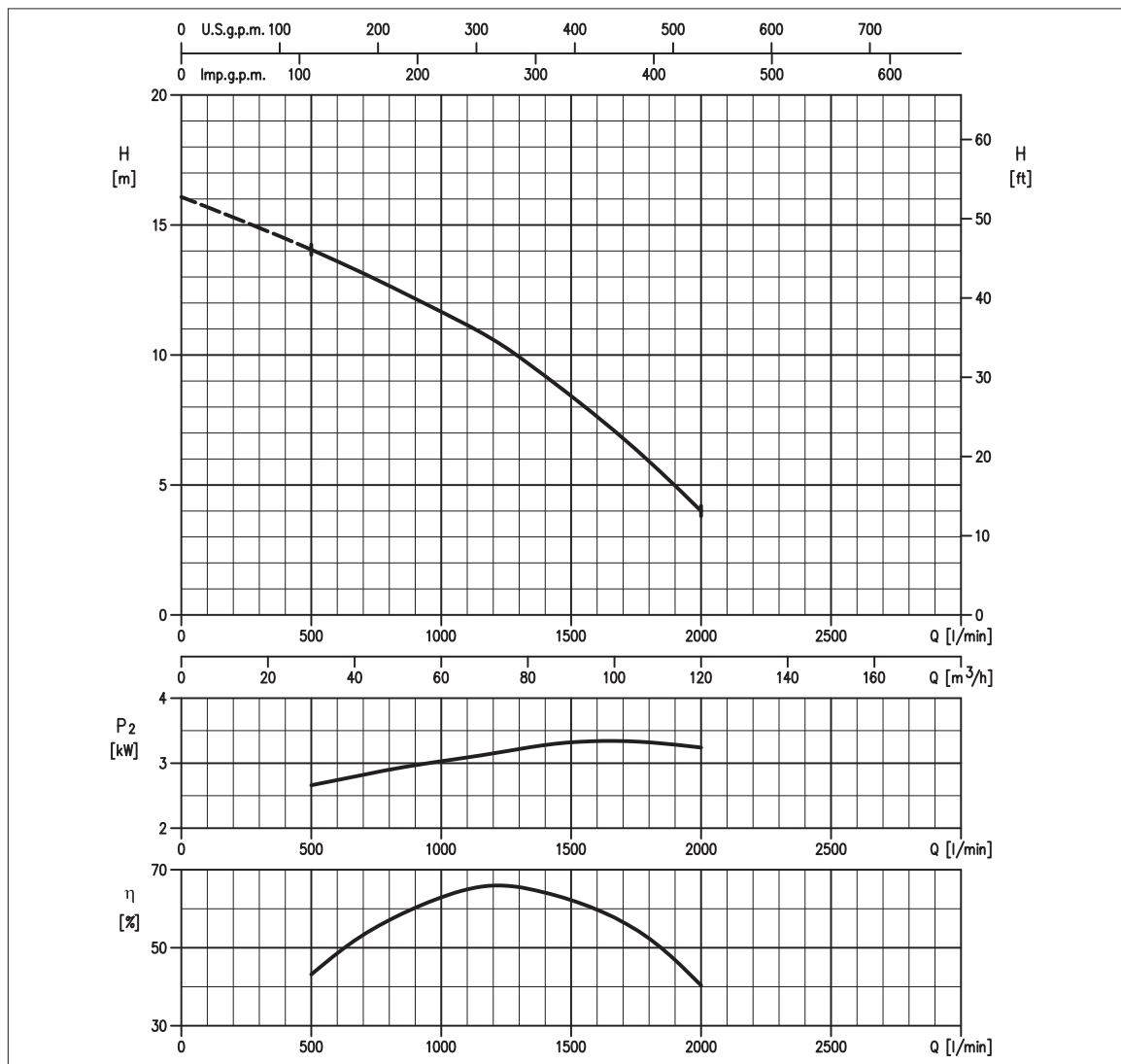


TABELLA PRESTAZIONI • PERFORMANCE TABLE • TABLEAU DE PERFORMANCES

Modello Model Modèle	P ₂		Q = Portata / Flow rate / Débit															
	[HP]	[kW]	l/min 100 m³/h 6	250 15	300 18	400 24	500 30	700 42	900 54	1000 60	1100 66	1200 72	1400 84	1600 96	2000 120	2400 144	2500 150	
100DL53.7W/C	5	3.7	-	-	-	-	14,1	13,1	12,2	11,7	11,2	10,6	9,2	7,6	4,0	-	-	

H = Prevalenza / Head / Hauteur manométrique totale [m]

IDRAULICA • HYDRAULIC • HYDRAULIQUE

Girante Impeller Roue	MONOCANALE APERTA CON SISTEMA DI TAGLIO OPEN SINGLE-CHANNEL WITH CUTTER MONOCANALE OUVERTE AVEC COUPEAU
Mandata Flanges Brides	DN 100 mm
Massimo diametro passaggi liberi Maximum solid diameter Passage libre maximum	DN 60 mm corpi solidi DN 300 mm corpi fibrosi
Temperatura massima del liquido Maximum liquid temperature Température maximale du liquide	40°C
Doppia tenuta meccanica Double mechanical seal Double garniture mécanique	Cer/Carb/NBR SIC/SIC/NBR

TIPO POMPA • PUMP TYPE • TYPE DE POMPE

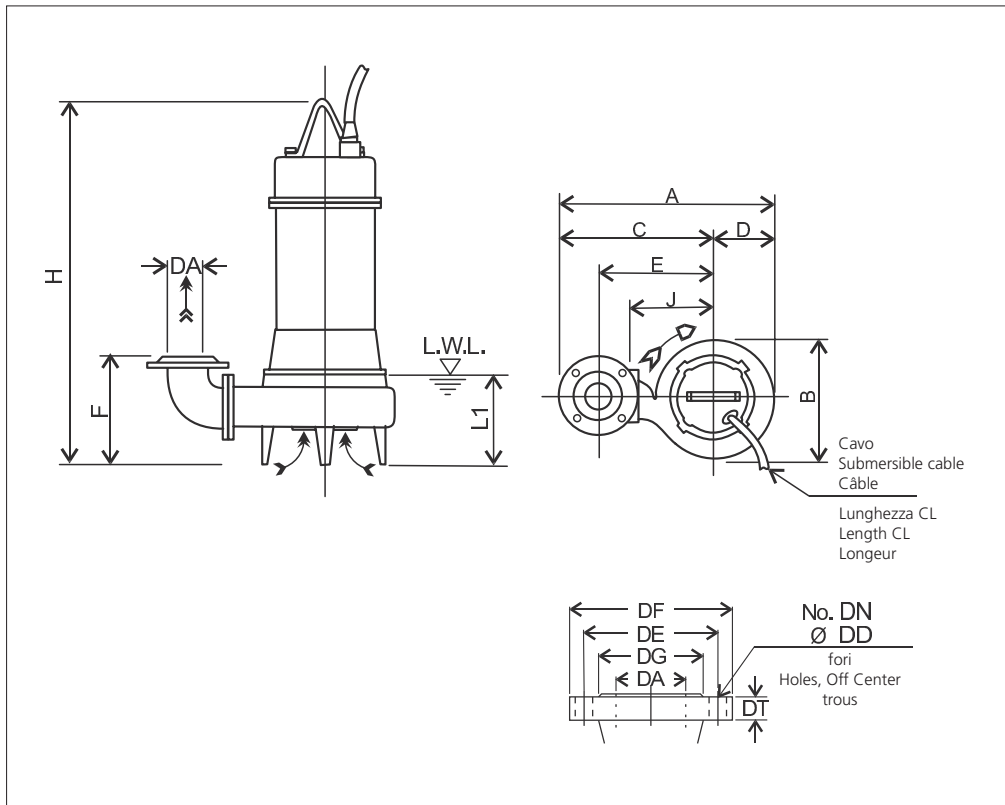
Peso Weight Poids	79 kg	Costruzione Construction Construction	GHISA CAST IRON FORTE
-------------------------	--------------	---	--

MOTORE • MOTOR • MOTEUR

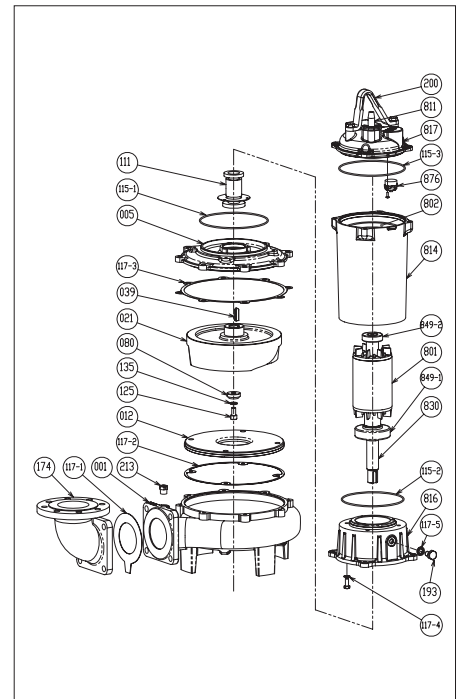
Tensione Power Tension	380 - 415V ±10%, 50 Hz DOL	Cavo Cable Câble	10 m
Avviamento ora Starts per hour Nombre de démarrages par huere	10	P ₂	3.7 kW
Classe di isolamento Insulation class Classe d'isolation	F	Voltaggio	380 V 400 V 415 V
Grado di protezione Protection degree Indice de protection	IP 68	Corrente di avviamento Start Current Ampérage au démarrage	49,4 A 47,5 A 49 A
		Corrente 100% Current 100% Ampérage 100%	8,4 A 8,3 A 7,6 A
		Velocità di rotazione (rpm) Rotation speed (rpm) Vitesse de rotation (rpm)	1450



DIMENSIONI • DIMENSIONS • DIMENSIONS



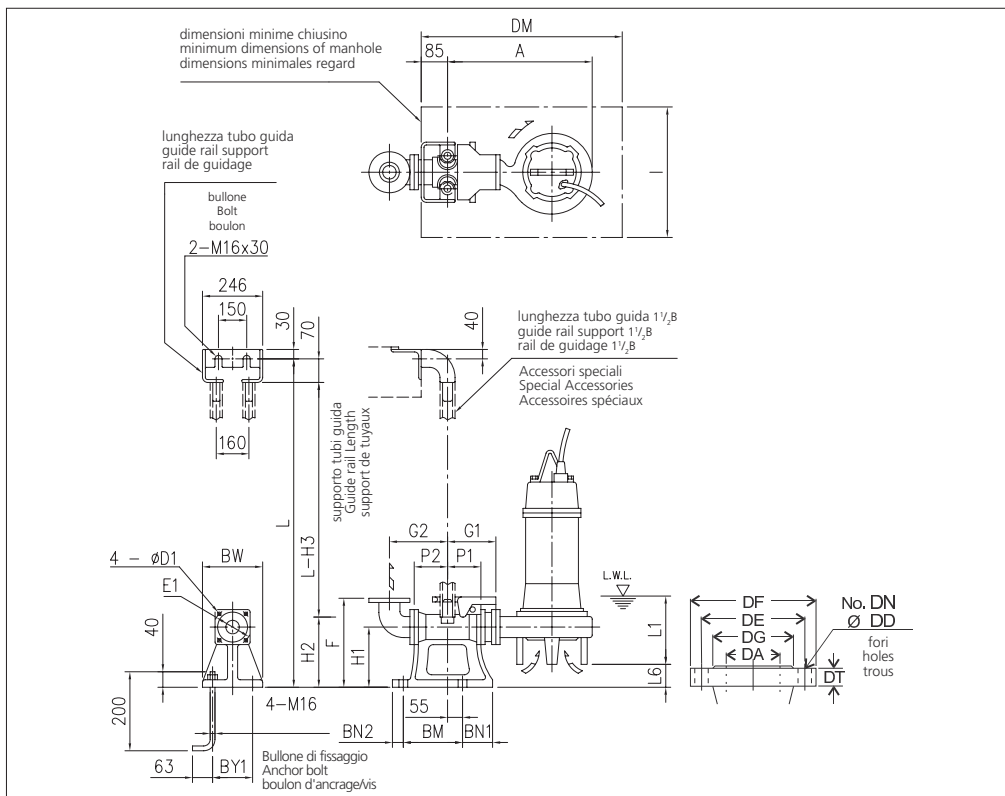
RICAMBI • REPLACEMENT PARTS • PIÈCES DE RECHANGE



001	Corpo pompa - Pump casing - Corps de la pompe
021	Girante - Impeller - Roue
039	Linguetta - Key - Languette
080	Bussola - Bushing - Bague d'usure
111	Tenuta meccanica - Mechanical seal Garniture mécanique
115-2	Anello OR - O-ring - Bague OR
115-3	Anello OR - O-ring - Bague OR
115-1	Anello OR - O-ring - Bague OR
117-1	Guarnizione - Gasket - Joint
117-2	Guarnizione - Gasket - Joint
117-3	Guarnizione - Gasket - Joint
125	Vite - Screw - Vis
135	Rondella - Washer - Rondelle d'étanchiété
811	Cavo - Cable - Câble
849-1	Cuscinetto - Bearing - Coussinet
849-2	Cuscinetto - Bearing - Coussinet
876	Termoprotettore - Auto cut - Protection thermique

TABELLA DIMENSIONI • DIMENSIONS TABLE • TABLEAU DE DIMENSIONS

DA	Modello Model Modèle	[kW]	A	B	C	D	E	F	H	J	L1 (*)	CL [m]	Peso Weight Poids [kg]
100	100DL53.7WC	3.7	614	335	445	169	340	250	706	235	185	10	79



MODELLO KIT SCIVOLO DISCESA (QDC) QDC MODEL MODÈLE KIT PIED D'ASSISE (QDC) LL100

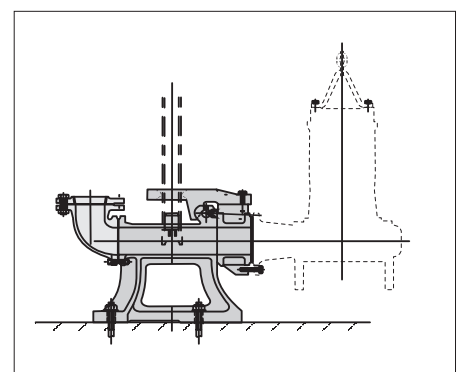


TABELLA DIMENSIONI QDC • QDC DIMENSIONS TABLE • TABLEAU DE DIMENSIONS QDC

DA	Modello Model Modèle	[kW]	A	P1	P2	G1	G2	F	H1	H2	H3	L1 (*)	L6	BN1	BN2	BM	BY1	BW	DM	I	D1	E1	QDC Mod. [kg]	
100	100DL53.7WC	3.7	589	105	105	185	210	365	240	265	335	185	115	100	40	220	180	230	800	700	19	175	LL100	46

GIRANTE ANTI-INTASAMENTO SEMIAPERTO CON SISTEMA DI TAGLIO
NON CLOG SEMI OPEN WITH CUTTER
IMBOUCHABLE SEMI OUVERTE AVEC COUTEAU

CURVE DI PRESTAZIONE • PERFORMANCE CURVES • COURBES DE PERFORMANCE

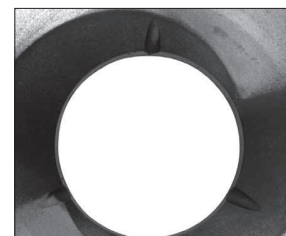
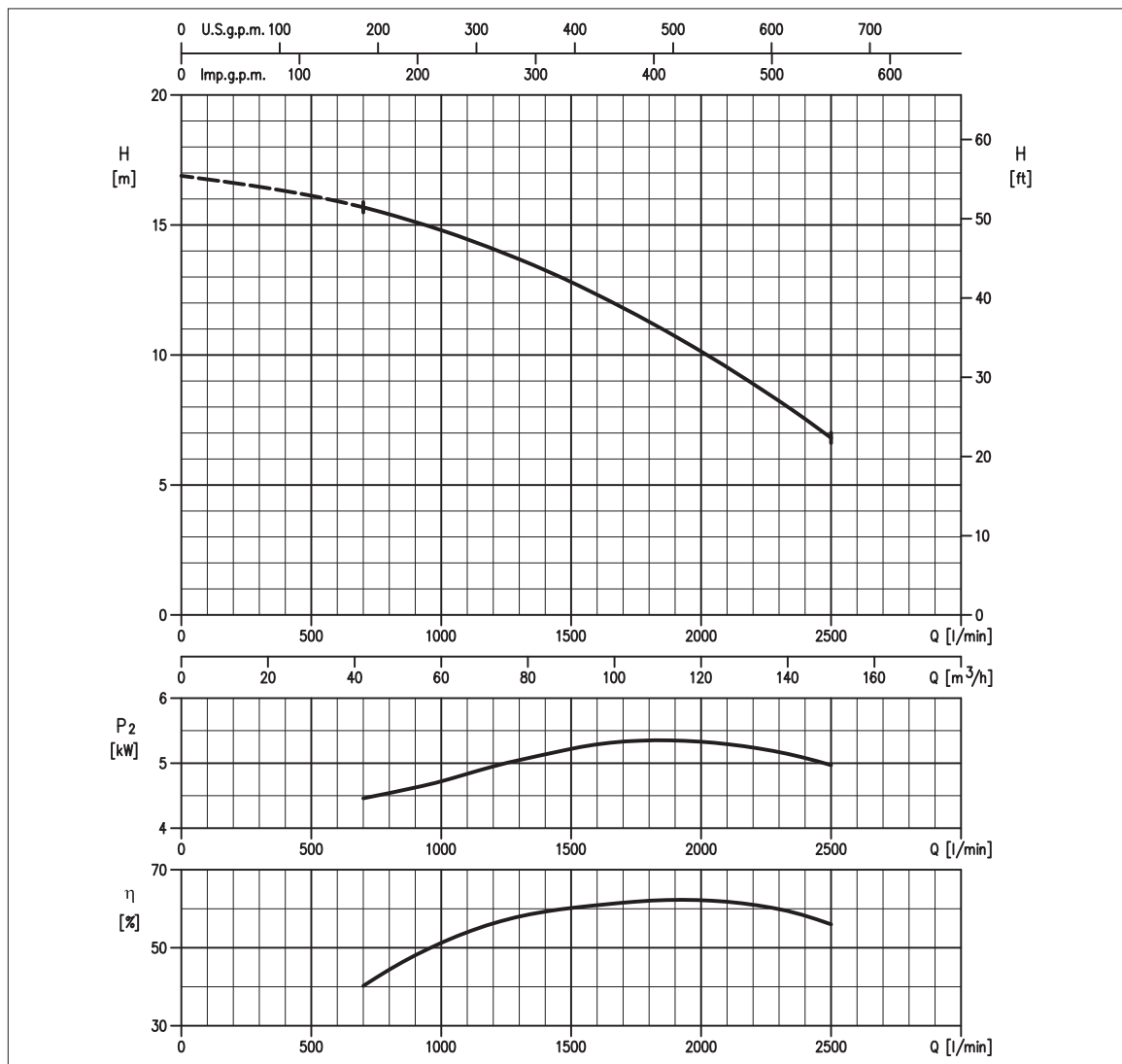


TABELLA PRESTAZIONI • PERFORMANCE TABLE • TABLEAU DE PERFORMANCES

Modello Model Modèle	P ₂		Q = Portata / Flow rate / Débit														
	[HP]	[kW]	l/min 100 m³/h 6	250 15	300 18	400 24	500 30	700 42	900 54	1000 60	1100 66	1200 72	1400 84	1600 96	2000 120	2400 144	2500 150
100DLB55.5W/C	7.5	5.5	-	-	-	-	-	15,7	15,1	14,8	14,5	14,1	13,3	12,3	10,1	7,5	6,8

H = Prevalenza / Head / Hauteur manométrique totale [m]

IDRAULICA • HYDRAULIC • HYDRAULIQUE

Girante Impeller Roue	GIRANTE ANTI-INTASAMENTO SEMIAPERTO CON SISTEMA DI TAGLIO NON CLOG SEMI OPEN WITH CUTTER IMBOUCHABLE SEMI OUVERTE AVEC COUTEAU
Mandata Flanges Brides	DN 100 mm
Massimo diametro passaggi liberi Maximum solid diameter Passage libre maximum	DN 60 mm corpi solidi DN 300 mm corpi fibrosi
Temperatura massima del liquido Maximum liquid temperature Température maximale du liquide	40°C
Doppia tenuta meccanica Double mechanical seal Double garniture mécanique	Cer/Carb/NBR SiC/SiC/NBR

TIPO POMPA • PUMP TYPE • TYPE DE POMPE

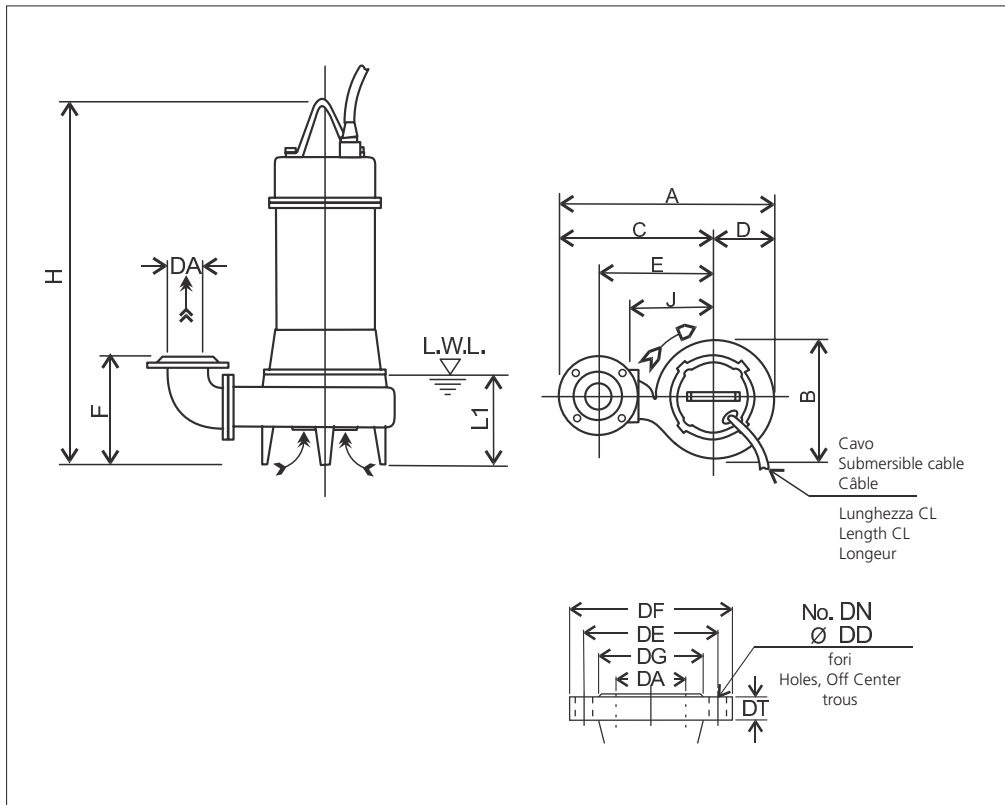
Peso Weight Poids	123 kg	Costruzione Construction Construction	GHISA CAST IRON FONTE
-------------------------	---------------	---	--------------------------------------

MOTORE • MOTOR • MOTEUR

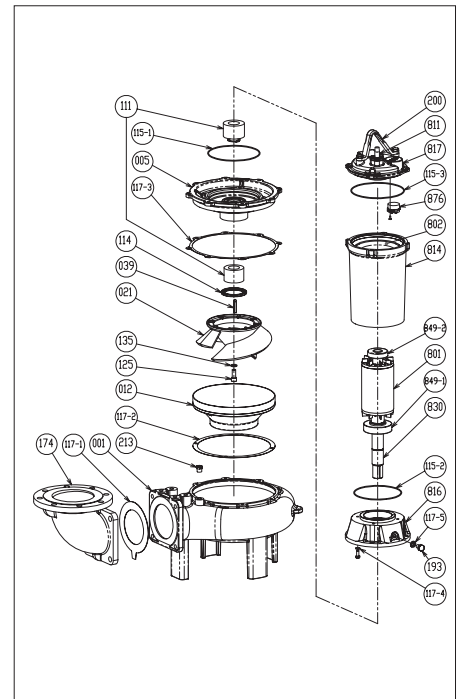
Tensione Power Tension	380 - 415V ±10%, 50 Hz DOL	Cavo Cable Câble	10 m
Avviamento ora Starts per hour Nombre de démarrages par huere	10	P ₂	5.5 kW
Classe di isolamento Insulation class Classe d'isolation	F	Voltaggio	380 V 400 V 415 V
Grado di protezione Protection degree Indice de protection	IP 68	Corrente di avviamento Start Current Ampérage au démarrage	81 A 70 A 74 A
		Corrente 100% Current 100% Ampérage 100%	11,7 A 11,3 A 10,7 A
		Velocità di rotazione (rpm) Rotation speed (rpm) Vitesse de rotation (rpm)	1450



DIMENSIONI • DIMENSIONS • DIMENSIONS



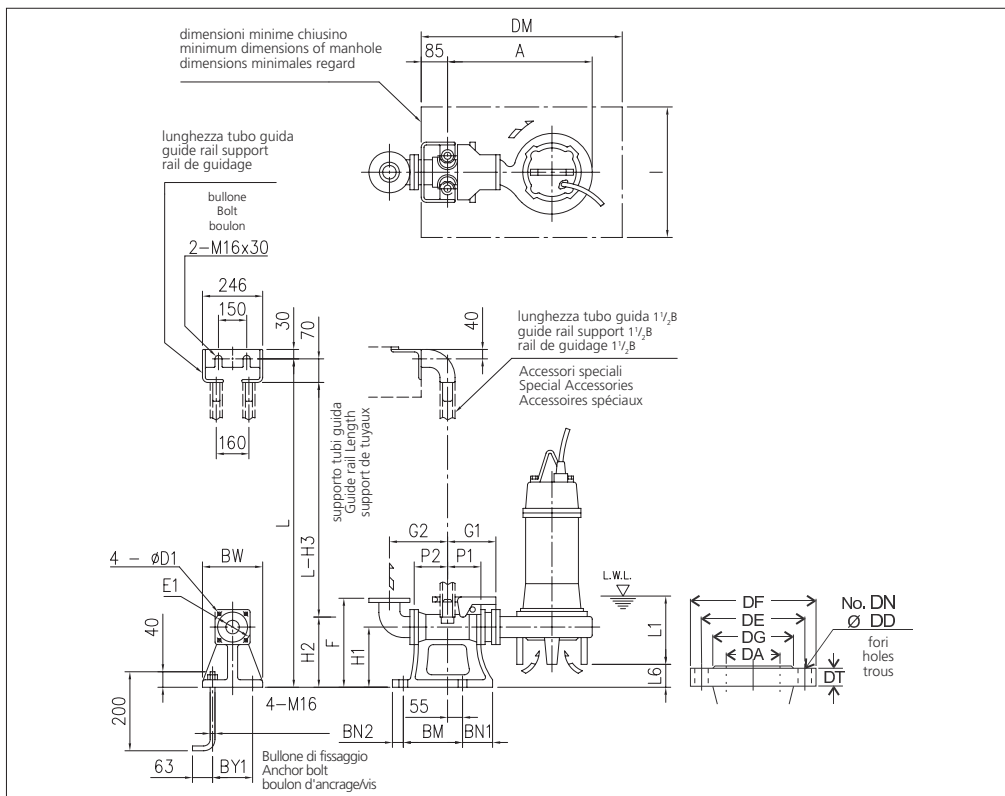
RICAMBI • REPLACEMENT PARTS • PIÈCES DE RECHANGE



001	Corpo pompa - Pump casing - Corps de la pompe
012	Corpo aspirazione - Suction cover - Volute
021	Girante - Impeller - Roue
111	Tenuta meccanica - Mechanical seal Garniture mécanique
117-5	Guarnizione - Gasket - Joint
193	Tappo - Plug - Bouchon
849-1	Cuscinetto - Bearing - Coussinet
849-2	Cuscinetto - Bearing - Coussinet

TABELLA DIMENSIONI • DIMENSIONS TABLE • TABLEAU DE DIMENSIONS

DA	Modello Model Modèle	[kW]	A	B	C	D	E	F	H	J	L1 (*)	CL [m]	Peso Weight Poids [kg]
100	100DLB55.5W/C	5.5	646	369	460	186	355	323	768	250	205	10	123



MODELLO KIT SCIVOLO DISCESA (QDC) QDC MODEL MODÈLE KIT PIED D'ASSISE (QDC) LL100

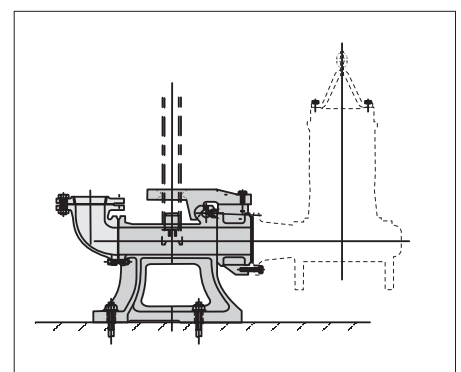


TABELLA DIMENSIONI QDC • QDC DIMENSIONS TABLE • TABLEAU DE DIMENSIONS QDC

DA	Modello Model Modèle	[kW]	A	P1	P2	G1	G2	F	H1	H2	H3	L1 (*)	L6	BN1	BN2	BM	BY1	BW	DM	I	D1	E1	QDC Mod. [kg]	
100	100DLB55.5W/C	5.5	621	105	105	185	210	365	240	265	335	205	42	100	40	220	180	230	800	700	19	175	LL100	46

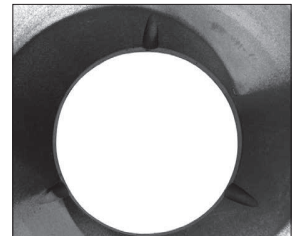
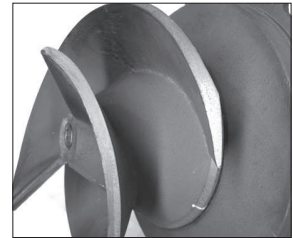
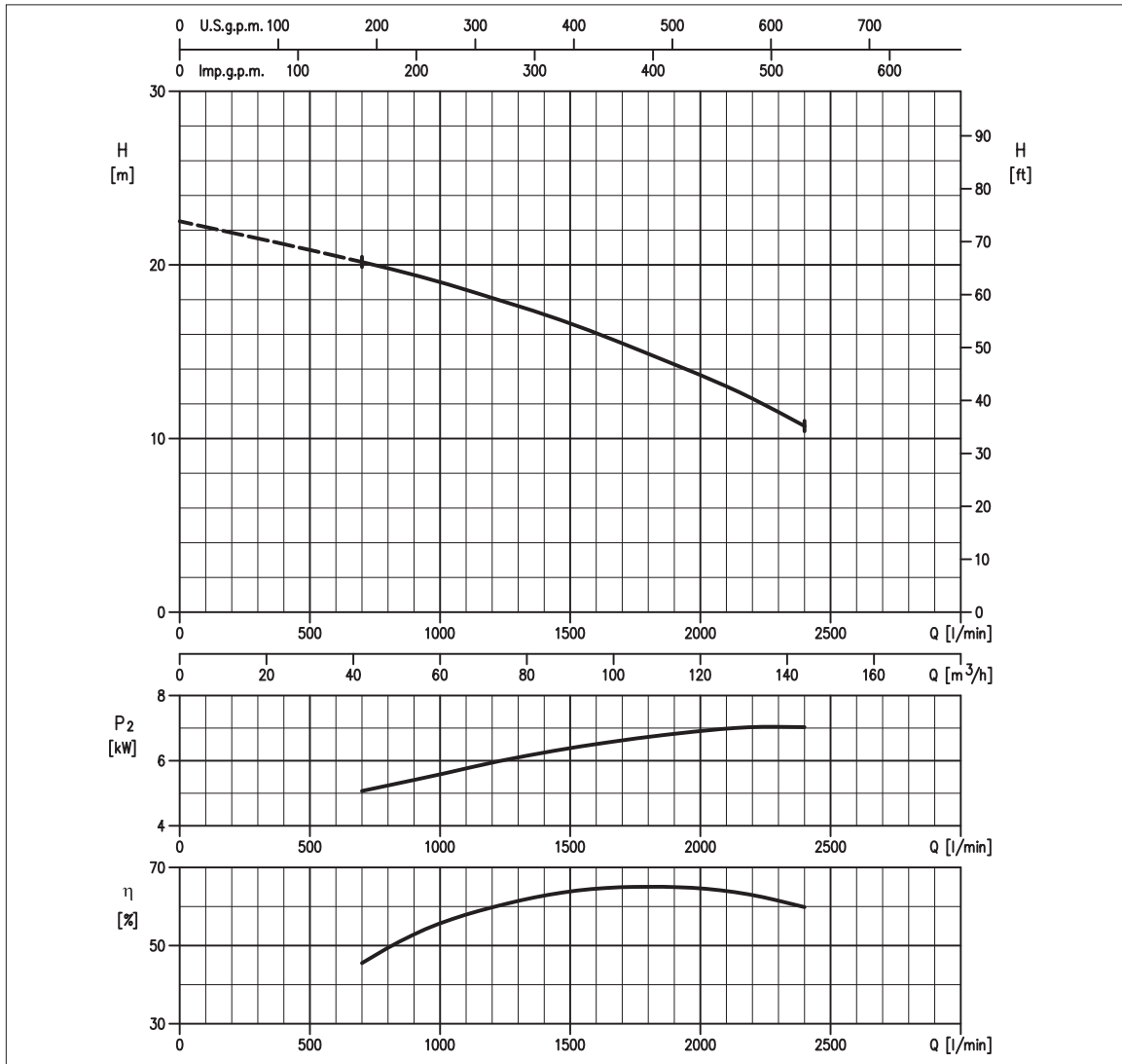
**EBARA**

100DLBW/C57.5



GIRANTE ANTI-INTASAMENTO SEMIAPERTO CON SISTEMA DI TAGLIO
NON CLOG SEMI OPEN WITH CUTTER
IMBOUCHABLE SEMI OUVERTE AVEC COUTEAU

S.C. 04/13 100DLBW/C57.5

CURVE DI PRESTAZIONE • PERFORMANCE CURVES • COURBES DE PERFORMANCE**TABELLA PRESTAZIONI • PERFORMANCE TABLE • TABLEAU DE PERFORMANCES**

Modello Model Modèle	P ₂		Q = Portata / Flow rate / Débit														
	[HP]	[kW]	l/min 100 m ³ /h 6	250 15	300 18	400 24	500 30	700 42	900 54	1000 60	1100 66	1200 72	1400 84	1600 96	2000 120	2400 144	2500 150
100DLB57.5W/C	10	7.5	-	-	-	-	-	20,2	19,4	19,0	18,6	18,1	17,2	16,1	13,7	10,7	-

H = Prevalenza / Head / Hauteur manométrique totale [m]

IDRAULICA • HYDRAULIC • HYDRAULIQUE

Girante Impeller Roue	GIRANTE ANTI-INTASAMENTO SEMIAPERTO CON SISTEMA DI TAGLIO NON CLOG SEMI OPEN WITH CUTTER IMBOUCHABLE SEMI OUVERTE AVEC COUTEAU
Mandata Flanges Brides	DN 100 mm
Massimo diametro passaggi liberi Maximum solid diameter Passage libre maximum	DN 60 mm corpi solidi DN 300 mm corpi fibrosi
Temperatura massima del liquido Maximum liquid temperature Température maximale du liquide	40°C
Doppia tenuta meccanica Double mechanical seal Double garniture mécanique	Cer/Carb/NBR SiC/SiC/NBR

TIPO POMPA • PUMP TYPE • TYPE DE POMPE

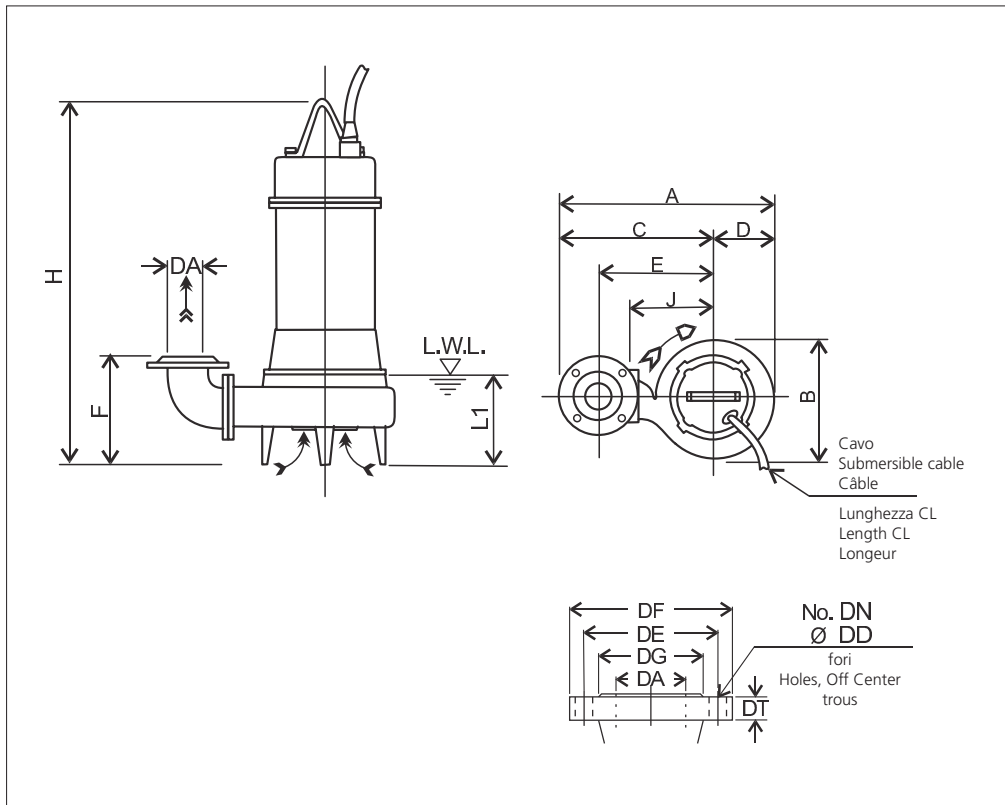
Peso Weight Poids	141 kg	Costruzione Construction Construction	GHISA CAST IRON FONTE
-------------------------	---------------	---	--------------------------------------

MOTORE • MOTOR • MOTEUR

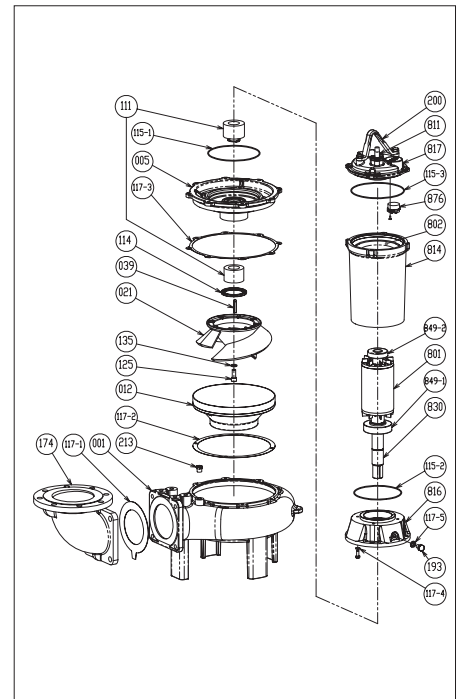
Tensione Power Tension	380 - 415V ±10%, 50 Hz DOL	Cavo Cable Câble	10 m
Avviamento ora Starts per hour Nombre de démarrages par huere	10	P ₂	7.5 kW
Classe di isolamento Insulation class Classe d'isolation	F	Voltaggio	380 V 400 V 415 V
Grado di protezione Protection degree Indice de protection	IP 68	Corrente di avviamento Start Current Ampérage au démarrage	120 A 104 A 108 A
		Corrente 100% Current 100% Ampérage 100%	16,4 A 15,5 A 14,8 A
		Velocità di rotazione (rpm) Rotation speed (rpm) Vitesse de rotation (rpm)	1450



DIMENSIONI • DIMENSIONS • DIMENSIONS



RICAMBI • REPLACEMENT PARTS • PIÈCES DE RECHANGE



001	Corpo pompa - Pump casing - Corps de la pompe
012	Corpo aspirazione - Suction cover - Volute
021	Girante - Impeller - Roue
111	Tenuta meccanica - Mechanical seal Garniture mécanique
117-5	Guarnizione - Gasket - Joint
193	Tappo - Plug - Bouchon
849-1	Cuscinetto - Bearing - Coussinet
849-2	Cuscinetto - Bearing - Coussinet

TABELLA DIMENSIONI • DIMENSIONS TABLE • TABLEAU DE DIMENSIONS

DA	Modello Model Modèle	[kW]	A	B	C	D	E	F	H	J	L1 (*)	CL [m]	Peso Weight Poids [kg]
100	100DLB57.5W/C	7.5	673	385	480	193	375	323	760	270	205	10	141

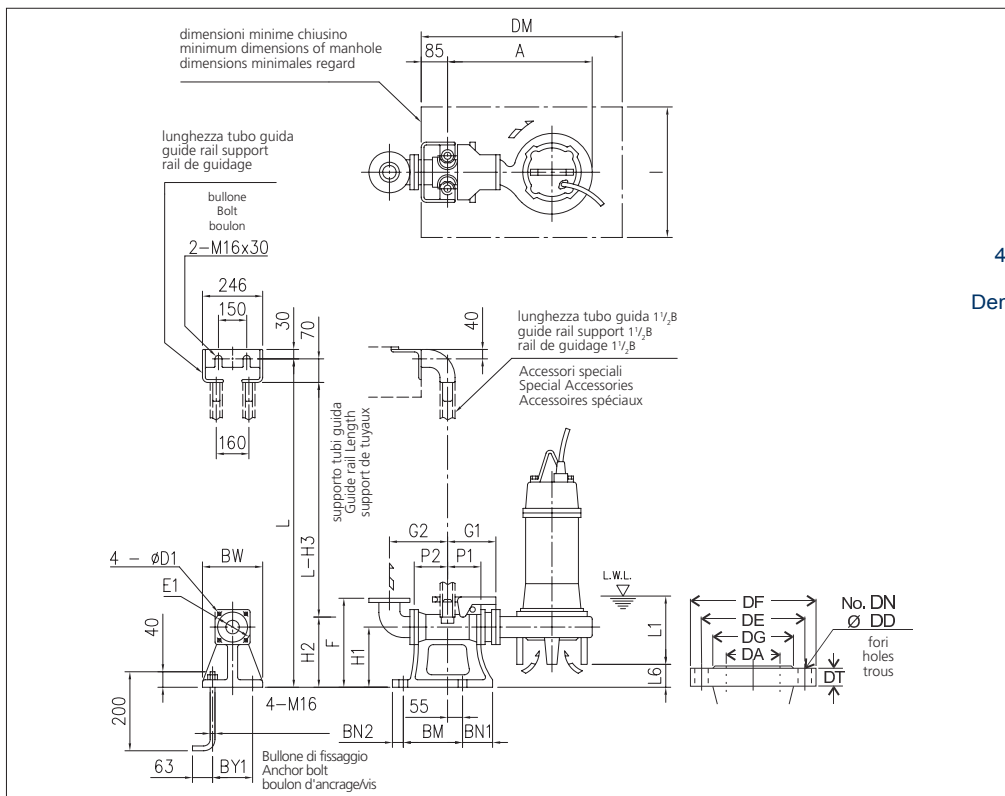


TABELLA DIMENSIONI QDC • QDC DIMENSIONS TABLE • TABLEAU DE DIMENSIONS QDC

DA	Modello Model Modèle	[kW]	A	P1	P2	G1	G2	F	H1	H2	H3	L1 (*)	L6	BN1	BN2	BM	BY1	BW	DM	I	D1	E1	QDC Mod. [kg]
100	100DLB57.5W/C	7.5	648	105	105	185	210	365	240	265	335	205	42	100	40	220	180	230	800	700	19	175	LL100 46

4 rue Lavoisier . ZA Lavoisier . 95223 HERBLAY CEDEX
 Tel. : 01.39.97.65.10 / Fax. : 01.39.97.68.48
 Demande de prix / e-mail : service-commercial@motralec.com
www.motralec.com

MODELLO KIT SCIVOLO DISCESA (QDC) QDC MODEL MODÈLE KIT PIED D'ASSISE (QDC) LL100

