



**GIRANTE MONOCANALE
SINGLE-CHANNEL IMPELLER
ROUE MONOCANAL**

motralec

S.C. 12/12 50DMLF51.1M (120)

4 rue Lavoisier . ZA Lavoisier . 95223 HERBLAY CEDEX

Tel. : 01.39.97.65.10 / Fax. : 01.39.97.68.48

Demande de prix / e-mail : service-commercial@motralec.com

www.motralec.com

CURVE DI PRESTAZIONE • PERFORMANCE CURVES • COURBES DE PERFORMANCE

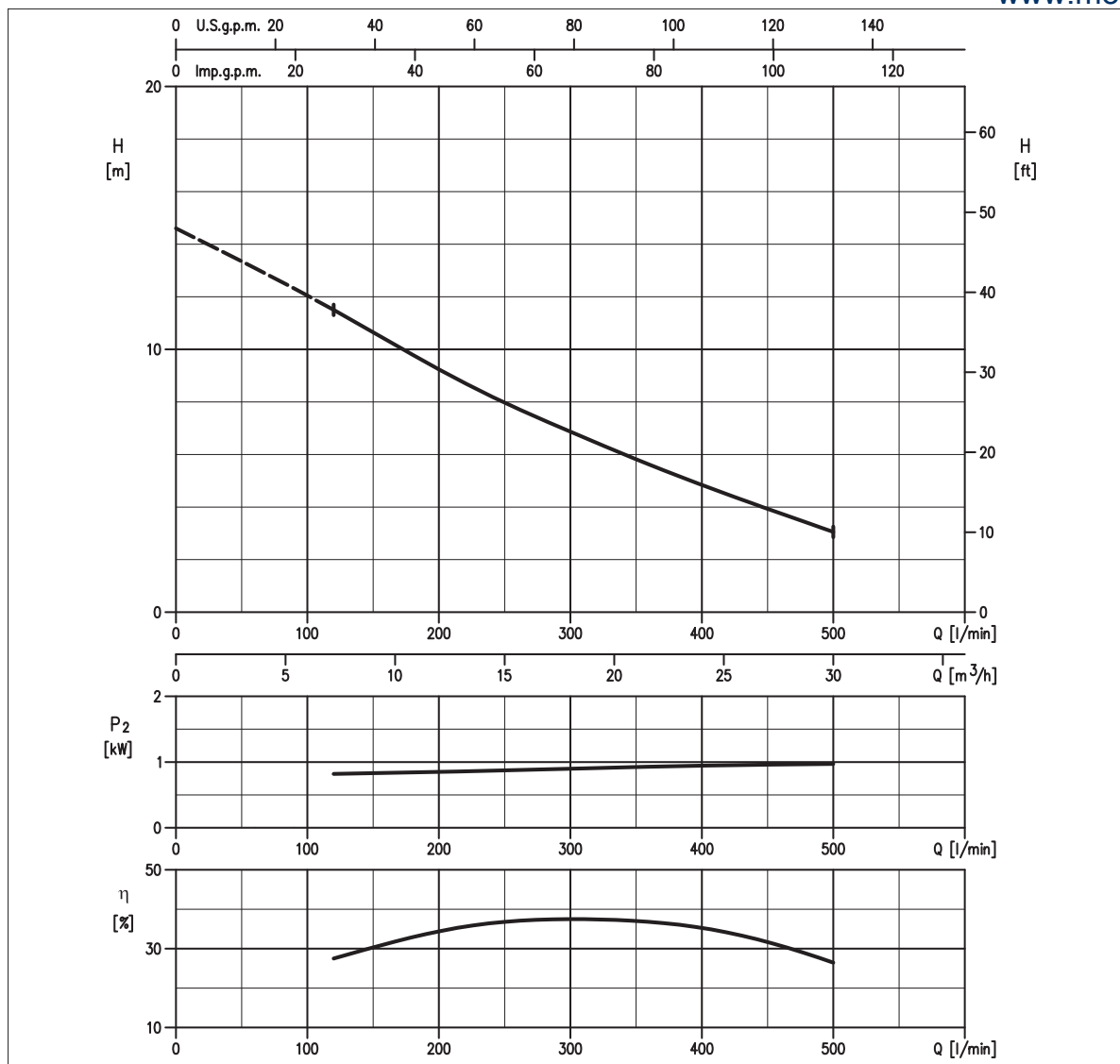


TABELLA PRESTAZIONI • PERFORMANCE TABLE • TABLEAU DE PERFORMANCES

Modello Model Modèle	P ₂		Q = Portata / Flow rate / Débit									
	[HP]	[kW]	l/min m ³ /h	120 7	200 12	223 13	300 18	322 19	400 24	500 30	600 36	750 45
50DMLF51.1M	1,5	1,1		11,5	9,3	8,6	6,9	6,4	4,8	3,1	-	-

H = Prevalenza / Head / Hauteur manometrique totale [m]

IDRAULICA • HYDRAULIC • HYDRAULIQUE

Girante Impeller Roue	MONOCANALE SINGLE-CHANNEL MONOCANAL
Mandata Flanges Brides	DN 50 mm
Massimo diametro passaggi liberi Maximum solid diameter Passage libre maximum	30 mm
Temperatura massima del liquido Maximum liquid temperature Température maximale du liquide	40°C
Doppia tenuta meccanica Double mechanical seal Double garniture mécanique	SiC/SiC/NBR

TIPO POMPA • PUMP TYPE • TYPE DE POMPE

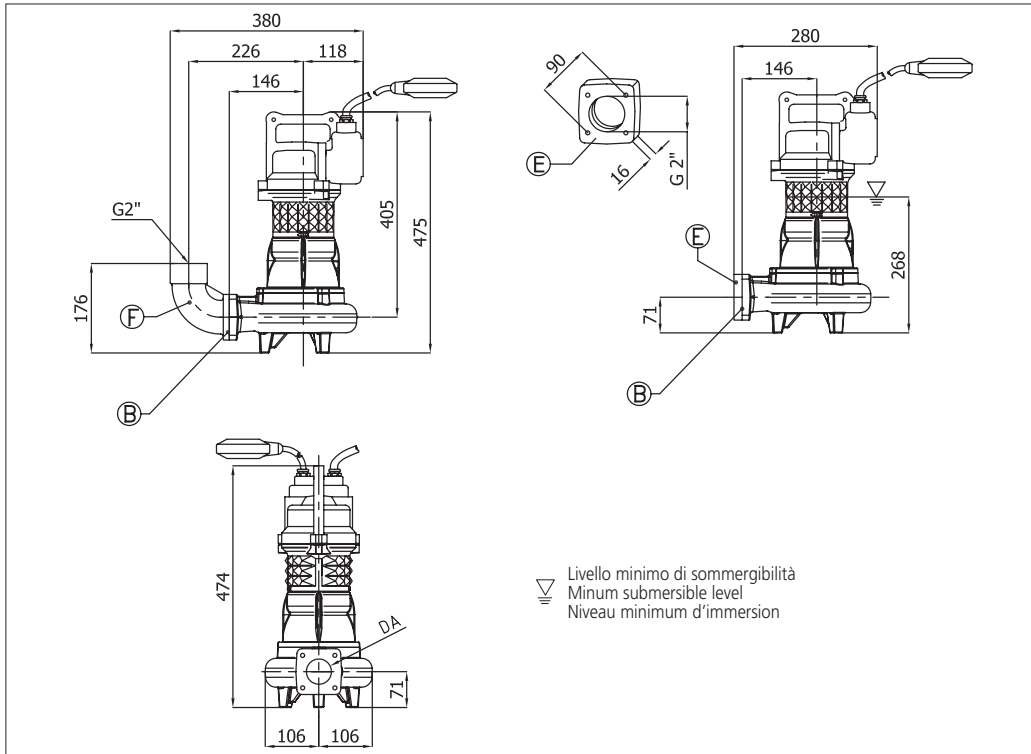
Peso Weight Poids	31 kg	Costruzione Construction Construction	GHISA CAST IRON FONTE
-------------------------	--------------	---	--------------------------------------

MOTORE • MOTOR • MOTEUR

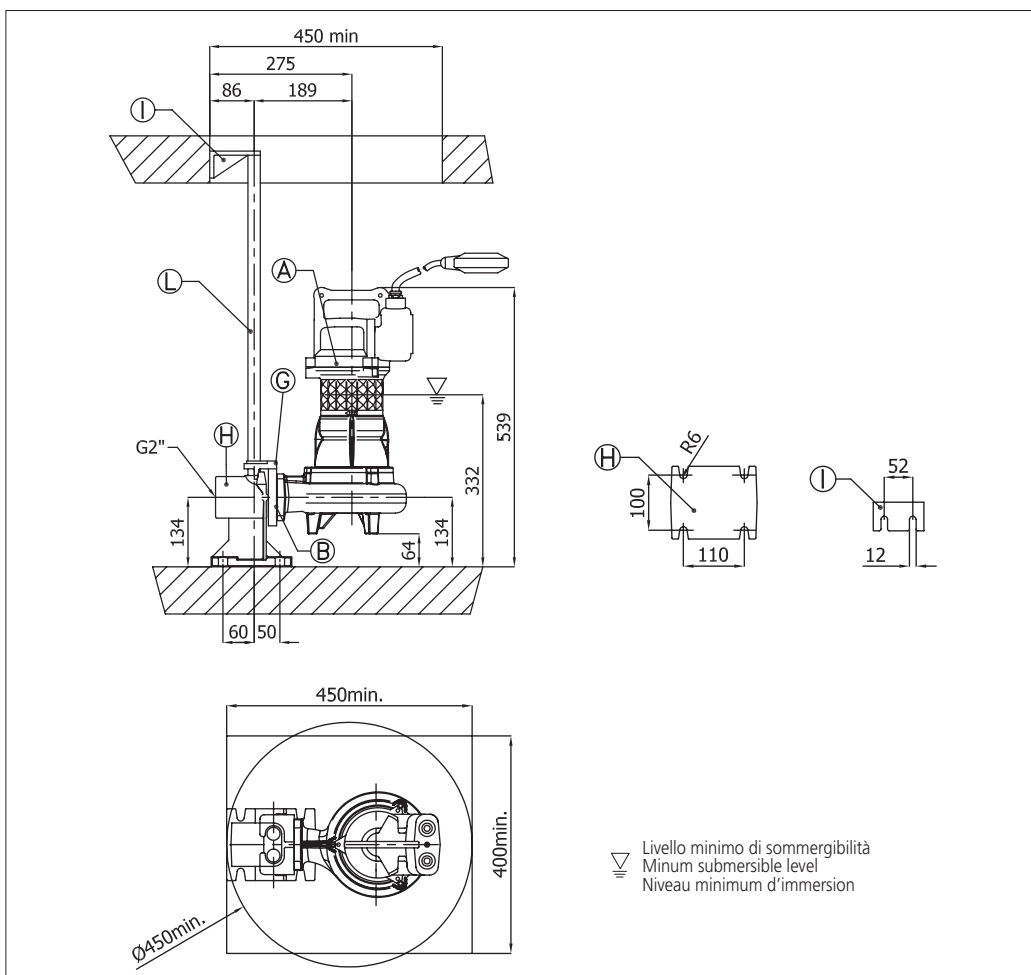
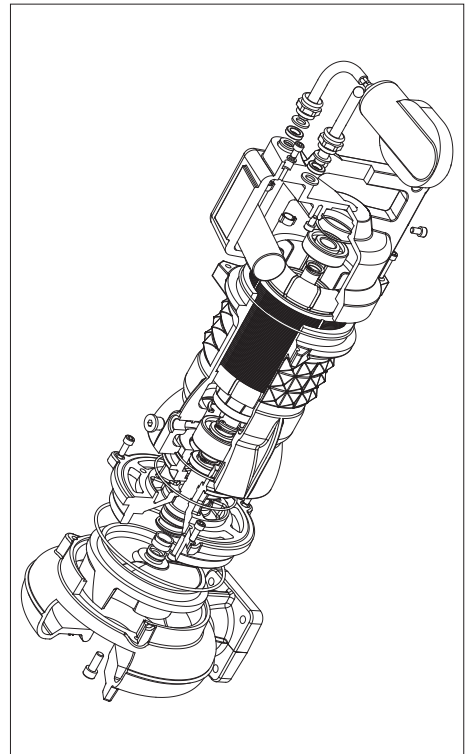
Tensione Power Tension	230V ±10% 50 Hz	Cavo Cable Câble	10 m
Avviamento ora Starts per hour Nombre de démarrages par huere	15	P ₂	1.1 kW
Classe di isolamento Insulation class Classe d'isolation	H	Corrente di avviamento Start Current Ampérage au démarrage	21 A
Grado di protezione Protection degree Indice de protection	IP 68	Corrente 100% Current 100% Ampérage 100%	7.5 A
		Velocità di rotazione (rpm) Rotation speed (rpm) Vitesse de rotation (rpm)	2850



DIMENSIONI • DIMENSIONS • DIMENSIONS



RICAMBI • REPLACEMENT PARTS • PIÈCES DE RECHANGE



<p>KIT RIPARAZIONE ORDINARIA: O-ring, Gommini, Tenute meccaniche Paraolio, Rosette tappo olio ORDINARY REPAIR KIT: O-ring, Glands, Mechanical seals, Lip seals, Oil plug washers KIT DE RÉPARATION ORDINAIRE: Joint torique, Bouchon caoutchouc, Garniture mécanique, Joint à lèvres, Bouchon pour chambre à huile</p>	
<p>KIT RIPARAZIONE COMPLETA: O-ring, Gommini, Tenute meccaniche, Paraolio, Rosette tappo olio, Anelli cromati, Cavo elettrico, Molla precarico, Cuscinetti, Anelli seeger COMPLETE REPAIR KIT: O-ring, Glands, Mechanical seals, Lip seals, Oil plug washers, Chromate rings, Electric cable, Pre-loading spring, Bearings, Circlips KIT REPARATION COMPLET: Joint torique, Bouchon caoutchouc, Garniture mécanique, Joint à lèvres, Bouchon pour chambre à huile, Joint chromé, Cable électrique, Ressort, Roulement, Circlips</p>	
<p>Girante Impeller Roue</p>	<p>120 mm</p>

**SELEZIONE QDC
SELECTION QDC
SÉLECTION QDC**

<p>Modello Kit scivolo discesa QDC Model Modèle Kit pied d'assise PA DN50</p>	
<p>Gomito/Curva di mandata Elbow Coude/courbe de sortie CUF 2"</p>	
<p>Controflange Counterflanges Contre-brides FL 2"</p>	

TABELLA DIMENSIONI • DIMENSIONS TABLE • TABLEAU DE DIMENSIONS

DA	Modello • Model • Modèle	[kW]	Peso • Weight • Poids [kg]
50	50DMLF511M (120)	1.1	31

**GIRANTE MONOCANALE
SINGLE-CHANNEL IMPELLER
ROUE MONOCANAL**

CURVE DI PRESTAZIONE • PERFORMANCE CURVES • COURBES DE PERFORMANCE

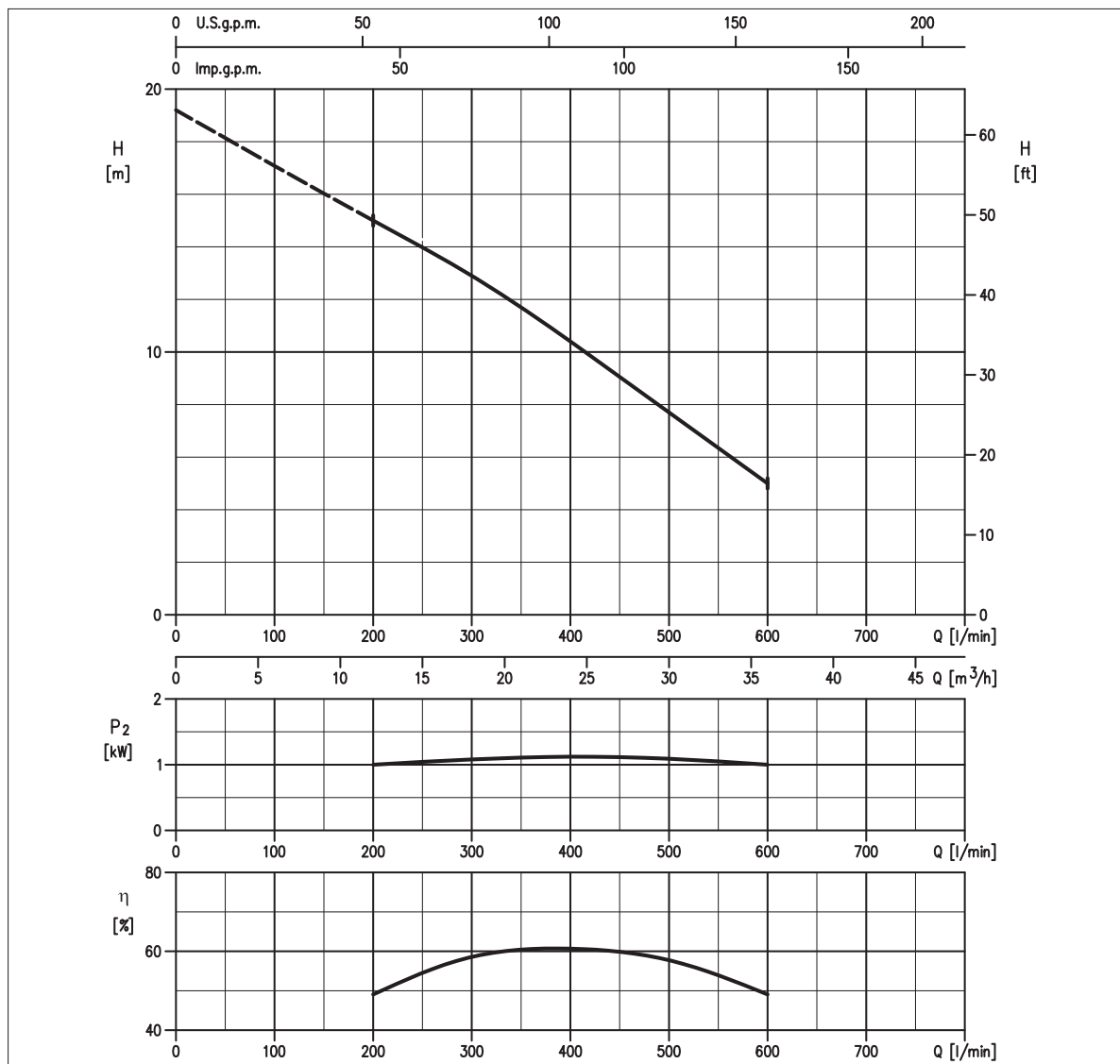


TABELLA PRESTAZIONI • PERFORMANCE TABLE • TABLEAU DE PERFORMANCES

Modello Model Modèle	P ₂		Q = Portata / Flow rate / Débit								
	[HP]	[kW]	l/min m ³ /h	120 7	200 12	223 13	300 18	322 19	400 24	500 30	600 36
65DMLF51.1M	1,5	1,1	-	15	14,5	12,9	12,4	10,4	7,7	5	-

H = Prevalenza / Head / Hauteur manométrique totale [m]

IDRAULICA • HYDRAULIC • HYDRAULIQUE

Girante Impeller Roue	MONOCANALE SINGLE-CHANNEL MONOCANAL
Mandata Flanges Brides	DN 65 mm
Massimo diametro passaggi liberi Maximum solid diameter Passage libre maximum	40 mm
Temperatura massima del liquido Maximum liquid temperature Température maximale du liquide	40°C
Doppia tenuta meccanica Double mechanical seal Double garniture mécanique	SiC/SiC/NBR

TIPO POMPA • PUMP TYPE • TYPE DE POMPE

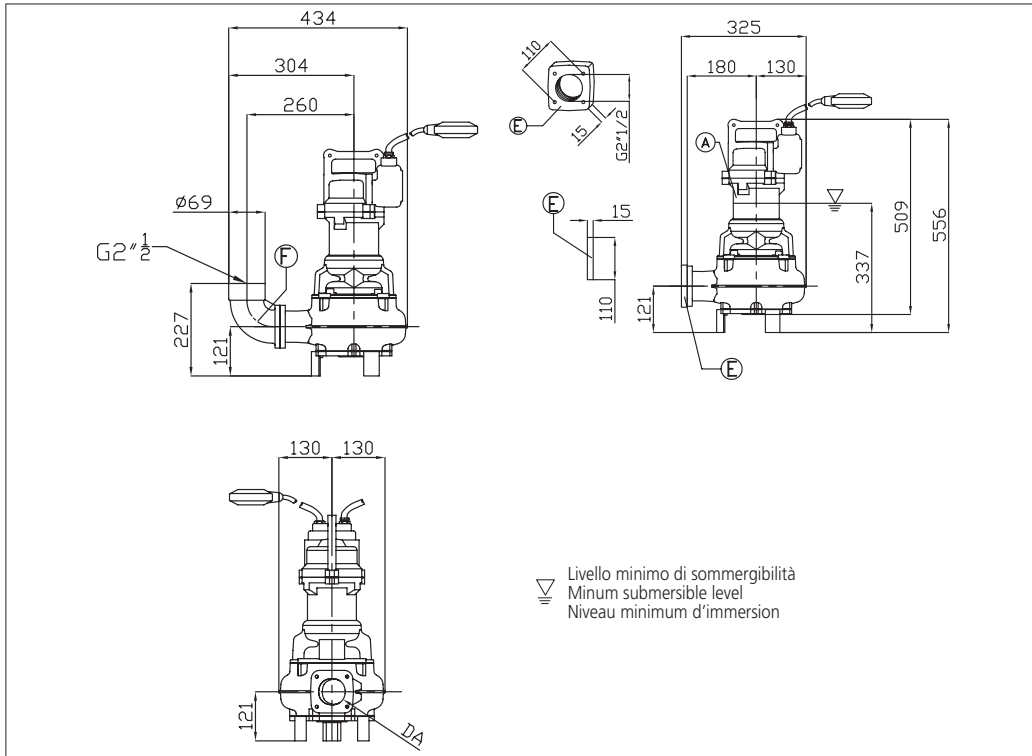
Peso Weight Poids	42 kg	Costruzione Construction Construction	GHISA CAST IRON FONTE
-------------------------	--------------	---	--------------------------------------

MOTORE • MOTOR • MOTEUR

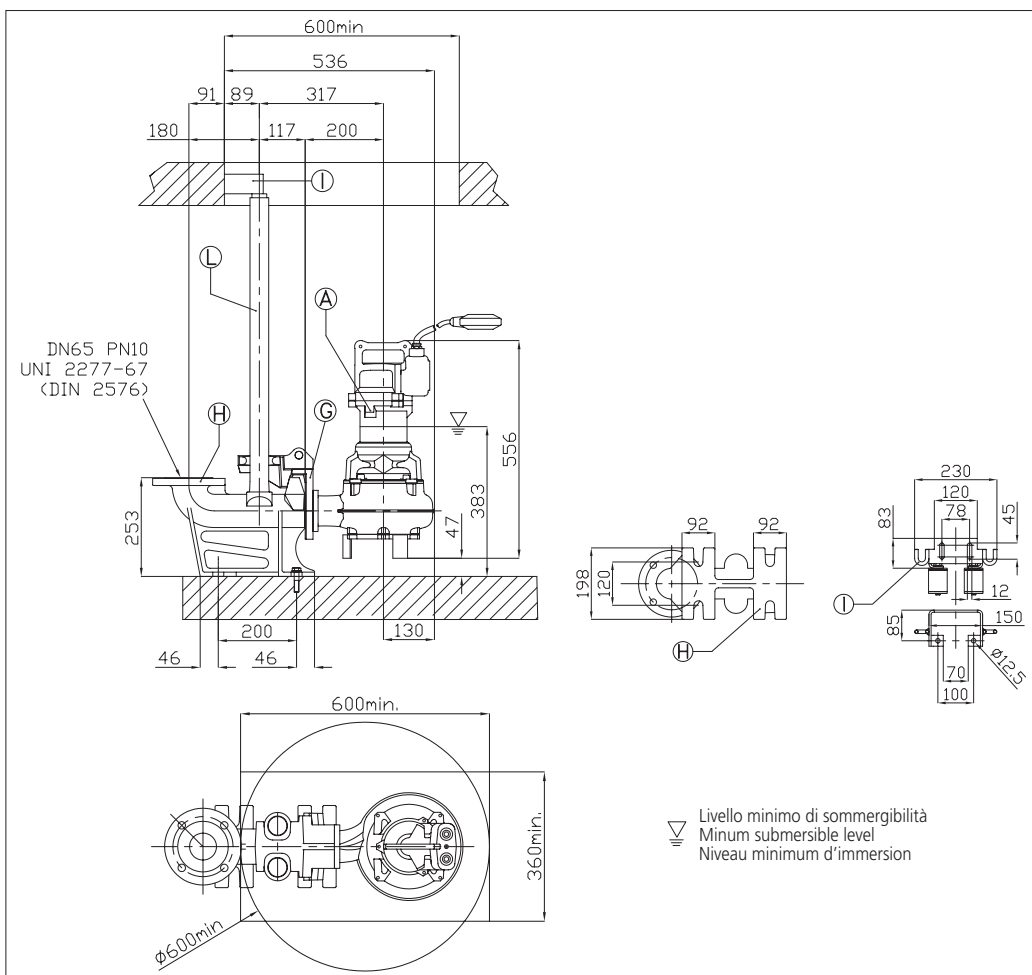
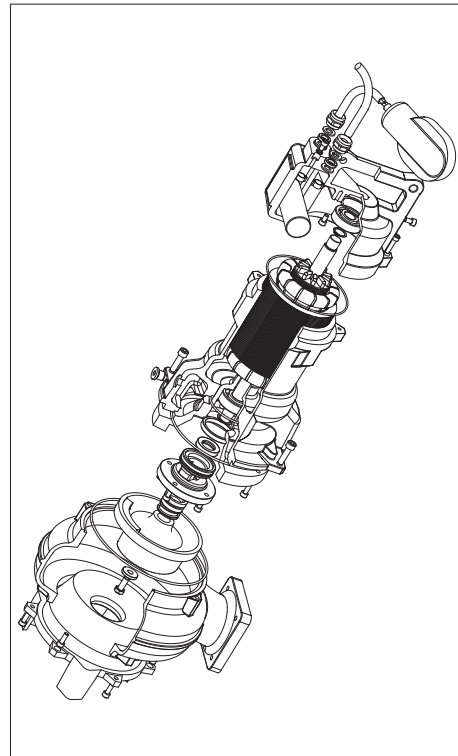
Tensione Power Tension	230V ±10% 50 Hz	Cavo Cable Câble	10 m
Avviamento ora Starts per hour Nombre de démarrages par huere	15	P ₂	1.1 kW
Classe di isolamento Insulation class Classe d'isolation	H	Corrente di avviamento Start Current Ampérage au démarrage	21 A
Grado di protezione Protection degree Indice de protection	IP 68	Corrente 100% Current 100% Ampérage 100%	7.5 A
		Velocità di rotazione (rpm) Rotation speed (rpm) Vitesse de rotation (rpm)	2850



DIMENSIONI • DIMENSIONS • DIMENSIONS



RICAMBI • REPLACEMENT PARTS • PIÈCES DE RECHANGE



KIT RIPARAZIONE ORDINARIA:
O-ring, Gommini, Tenute meccaniche
Paraolio, Rosette tappo olio
ORDINARY REPAIR KIT: O-ring,
Glands, Mechanical seals, Lip seals, Oil
plug washers
KIT DE RÉPARATION ORDINAIRE:
Joint torique, Bouchon caoutchouc,
Garniture mécanique, Joint à lèvres,
Bouchon pour chambre à huile



KIT RIPARAZIONE COMPLETA:
O-ring, Gommini, Tenute meccaniche,
Paraolio, Rosette tappo olio, Anelli
cromati, Cavo elettrico, Molla
precarico, Cuscinetti, Anelli seeger
COMPLETE REPAIR KIT: O-ring,
Glands, Mechanical seals, Lip seals, Oil
plug washers, Chromate rings, Electric
cable, Pre-loading spring, Bearings,
Circlips
KIT REPARATION COMPLET:
Joint torique, Bouchon caoutchouc,
Garniture mécanique, Joint à lèvres,
Bouchon pour chambre à huile, Joint
chromé, Cable électrique, Ressort,
Roulement, Circlips



Girante
Impeller
Roue

135 mm

**SELEZIONE QDC
SELECTION QDC
SÉLECTION QDC**

Modello Kit scivolo discesa QDC Model Modèle Kit pied d'assise PA DN65/8	
Gomito/Curva di mandata Elbow Coude/courbe de sortie CUF 2" 1/2	
Controflange Counterflanges Contre-brides FL 2" 1/2	

TABELLA DIMENSIONI • DIMENSIONS TABLE • TABLEAU DE DIMENSIONS

DA	Modello • Model • Modèle	[kW]	Peso • Weight • Poids [kg]
65	65DMLF51.1M (135)	1.1	42



**GIRANTE MONOCANALE
SINGLE-CHANNEL IMPELLER
ROUE MONOCANAL**

S.C. 12/12 65DMLF51.8M (125)

CURVE DI PRESTAZIONE • PERFORMANCE CURVES • COURBES DE PERFORMANCE

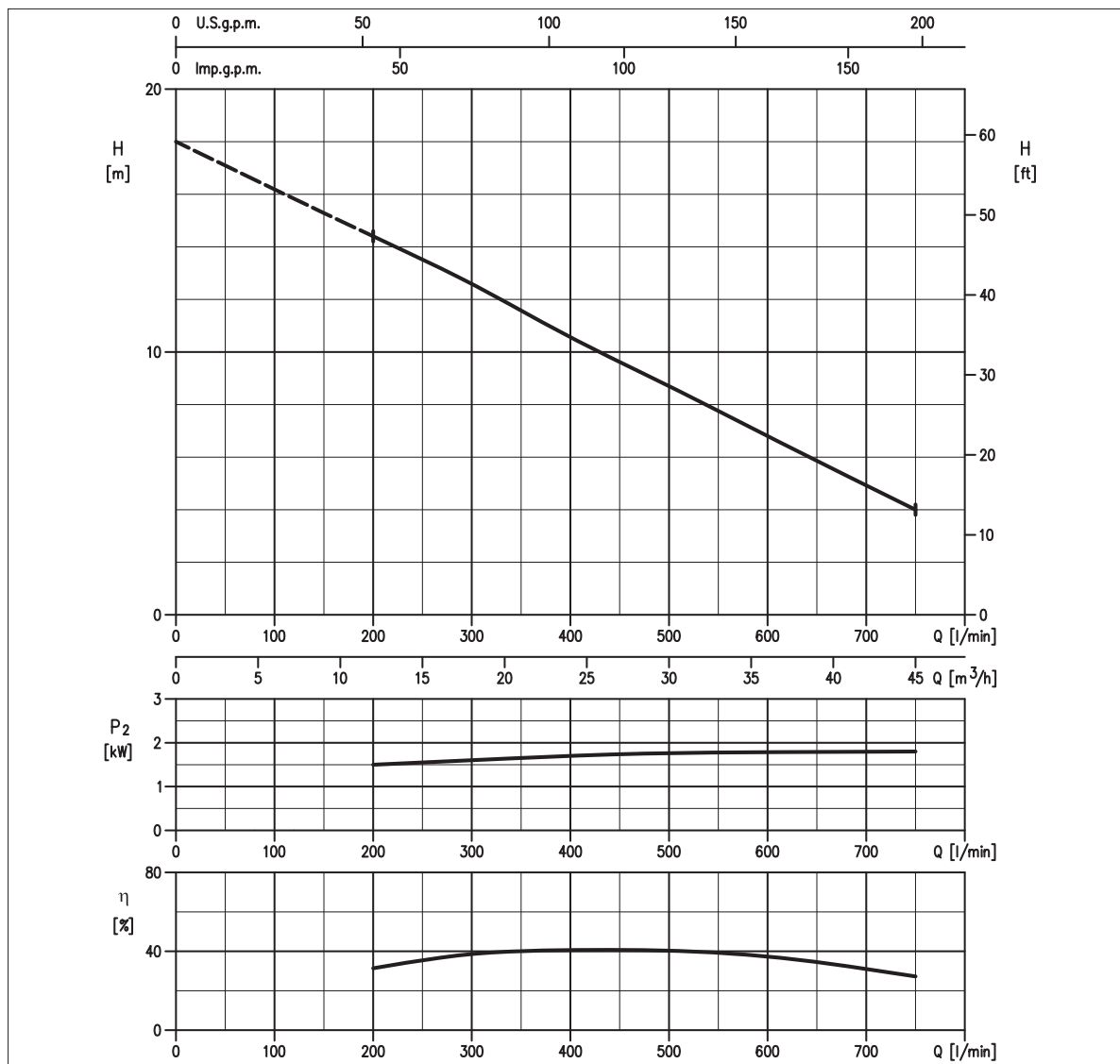


TABELLA PRESTAZIONI • PERFORMANCE TABLE • TABLEAU DE PERFORMANCES

Modello Model Modèle	P ₂		Q = Portata / Flow rate / Débit								
	[HP]	[kW]	l/min m ³ /h	120 7	200 12	223 13	300 18	322 19	400 24	500 30	600 36
65DMLF51.8M	2,5	1,8	-	14,4	14	12,5	12,1	10,6	8,7	6,8	4

H = Prevalenza / Head / Hauteur manométrique totale [m]

IDRAULICA • HYDRAULIC • HYDRAULIQUE

Girante Impeller Roue	MONOCANALE SINGLE-CHANNEL MONOCANAL
Mandata Flanges Brides	DN 65 mm
Massimo diametro passaggi liberi Maximum solid diameter Passage libre maximum	40 mm
Temperatura massima del liquido Maximum liquid temperature Température maximale du liquide	40°C
Doppia tenuta meccanica Double mechanical seal Double garniture mécanique	SiC/SiC/NBR

TIPO POMPA • PUMP TYPE • TYPE DE POMPE

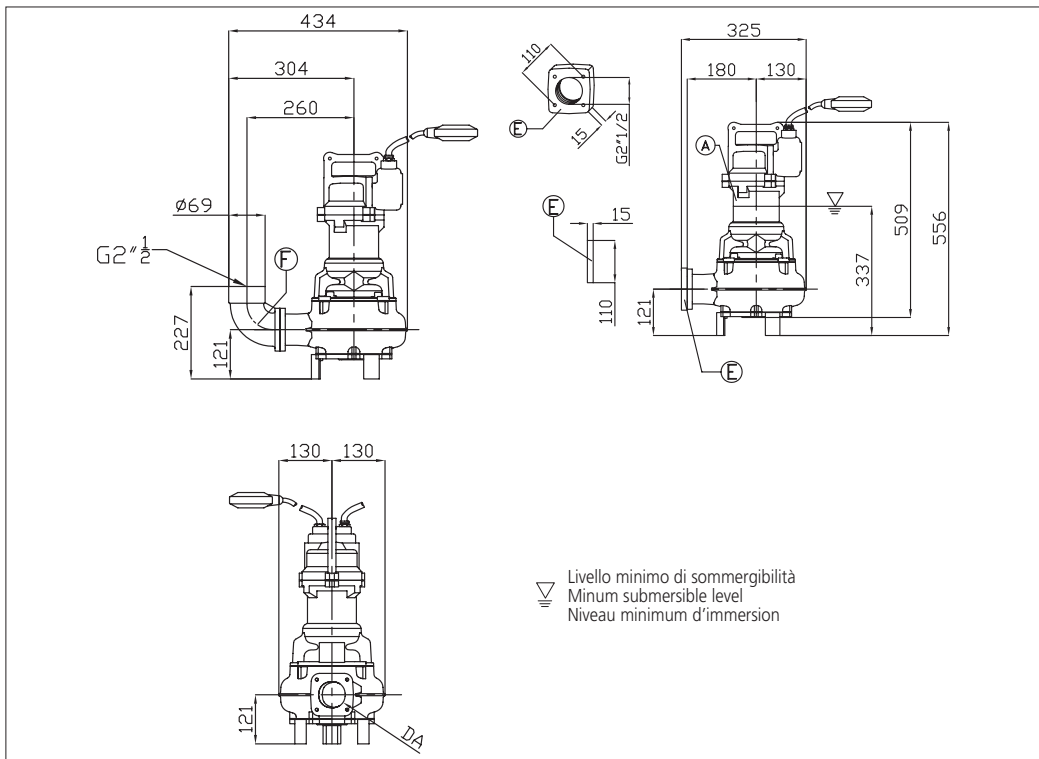
Peso Weight Poids	45 kg	Costruzione Construction Construction	GHISA CAST IRON FONTE
-------------------------	--------------	---	--------------------------------------

MOTORE • MOTOR • MOTEUR

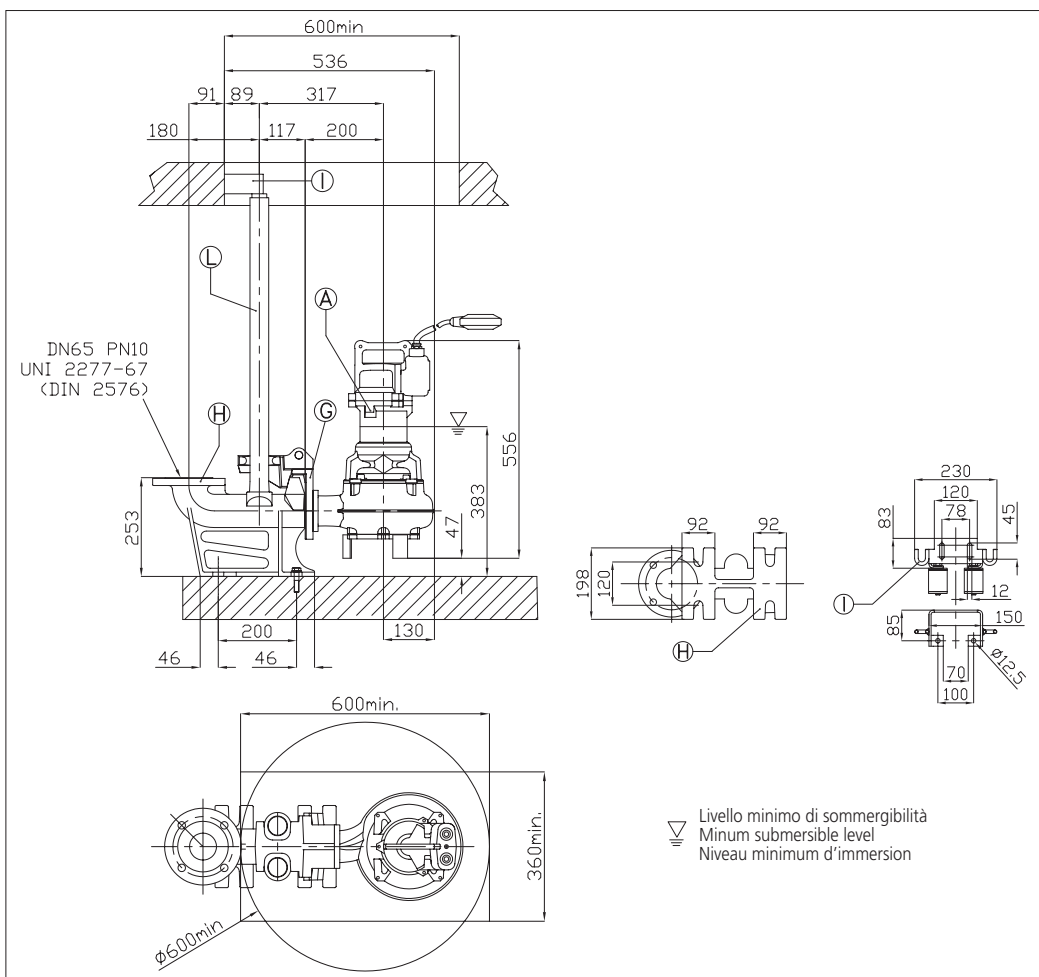
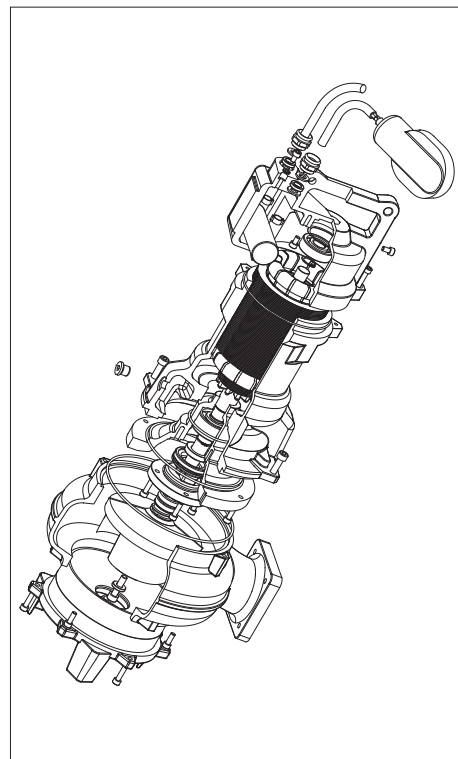
Tensione Power Tension	230V ±10% 50 Hz	Cavo Cable Câble	10 m
Avviamento ora Starts per hour Nombre de démarrages par huere	15	P ₂	1.8 kW
Classe di isolamento Insulation class Classe d'isolation	H	Corrente di avviamento Start Current Ampérage au démarrage	35 A
Grado di protezione Protection degree Indice de protection	IP 68	Corrente 100% Current 100% Ampérage 100%	10 A
		Velocità di rotazione (rpm) Rotation speed (rpm) Vitesse de rotation (rpm)	2850



DIMENSIONI • DIMENSIONS • DIMENSIONS



RICAMBI • REPLACEMENT PARTS • PIÈCES DE RECHANGE



KIT RIPARAZIONE ORDINARIA: O-ring, Gommini, Tenute meccaniche Paraolio, Rosette tappo olio ORDINARY REPAIR KIT: O-ring, Glands, Mechanical seals, Lip seals, Oil plug washers KIT DE RÉPARATION ORDINAIRE: Joint torique, Bouchon caoutchouc, Garniture mécanique, Joint à lèvres, Bouchon pour chambre à huile	
KIT RIPARAZIONE COMPLETA: O-ring, Gommini, Tenute meccaniche, Paraolio, Rosette tappo olio, Anelli cromati, Cavo elettrico, Molla precarico, Cuscinetti, Anelli seeger COMPLETE REPAIR KIT: O-ring, Glands, Mechanical seals, Lip seals, Oil plug washers, Chromate rings, Electric cable, Pre-loading spring, Bearings, Circlips KIT REPARATION COMPLET: Joint torique, Bouchon caoutchouc, Garniture mécanique, Joint à lèvres, Bouchon pour chambre à huile, Joint chromé, Cable électrique, Ressort, Roulement, Circlips	
Girante Impeller Roue	125 mm

**SELEZIONE QDC
SELECTION QDC
SÉLECTION QDC**

Modello Kit scivolo discesa QDC Model Modèle Kit pied d'assise PA DN65/8	
Gomito/Curva di mandata Elbow Coude/courbe de sortie CUF 2" 1/2	
Controflange Counterflanges Contre-brides FL 2" 1/2	

TABELLA DIMENSIONI • DIMENSIONS TABLE • TABLEAU DE DIMENSIONS

DA	Modello • Model • Modèle	[kW]	Peso • Weight • Poids [kg]
65	65DMLF51.8M (125)	1.8	45

GIRANTE MONOCANALE SINGLE-CHANNEL IMPELLER ROUE MONOCANAL

CURVE DI PRESTAZIONE • PERFORMANCE CURVES • COURBES DE PERFORMANCE

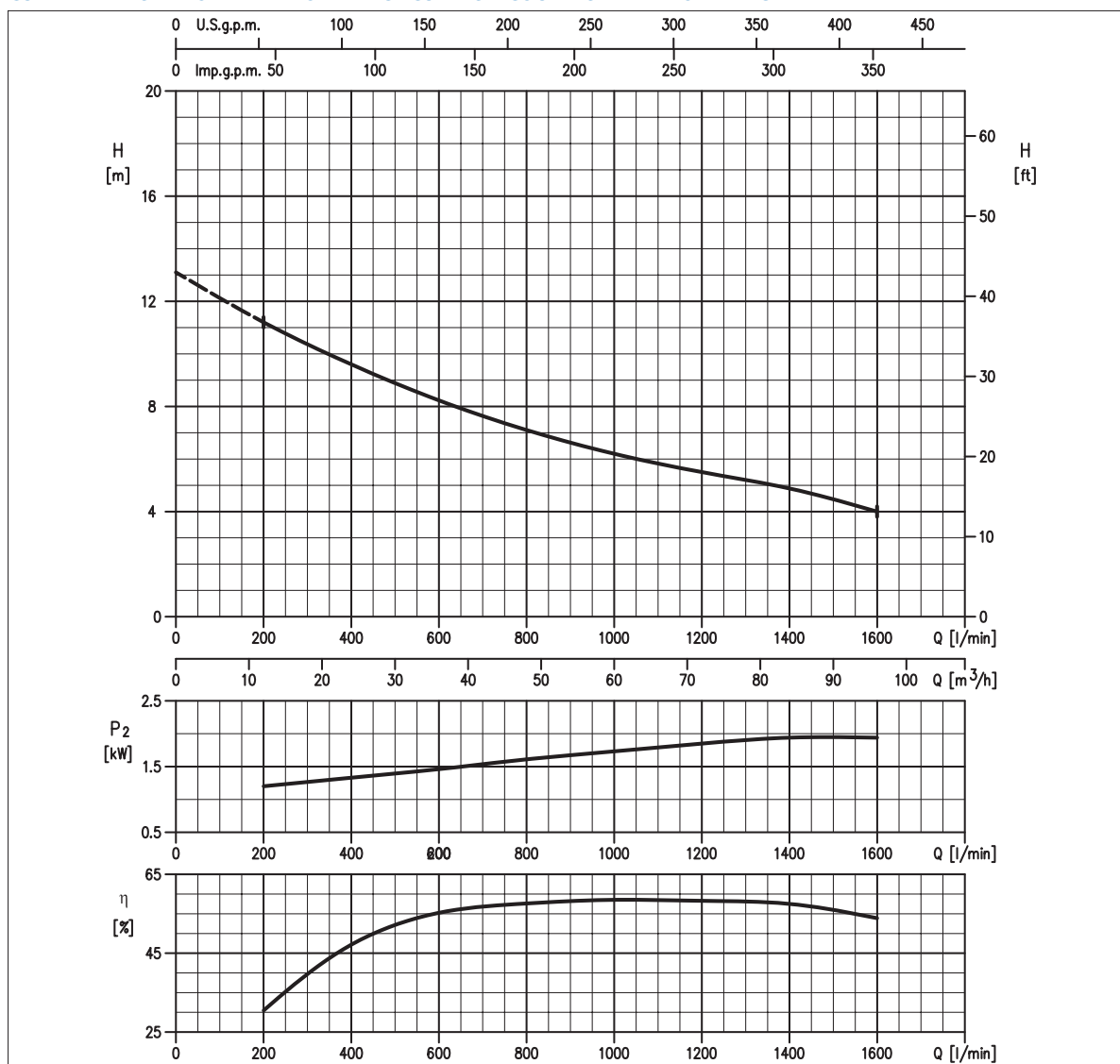


TABELLA PRESTAZIONI • PERFORMANCE TABLE • TABLEAU DE PERFORMANCES

Modello Model Modèle	P ₂		Q = Portata / Flow rate / Débit							
	[HP]	[kW]	l/min m³/h	200 12	400 24	600 36	800 48	1000 60	1200 72	1400 84
80DML52.2	3	2,2	11,2	9,6	8,2	7,1	6,2	5,5	4,9	4,0

H = Prevalenza / Head / Hauteur manométrique totale [m]

IDRAULICA • HYDRAULIC • HYDRAULIQUE

Girante Impeller Roue	MONOCANALE SINGLE-CHANNEL MONOCANAL
Mandata Flanges Brides	DN 80 mm
Massimo diametro passaggi liberi Maximum solid diameter Passage libre maximum	76 mm
Temperatura massima del liquido Maximum liquid temperature Température maximale du liquide	40°C
Doppia tenuta meccanica Double mechanical seal Double garniture mécanique	SiC/SiC/NBR Cer/Carb/NBR

TIPO POMPA • PUMP TYPE • TYPE DE POMPE

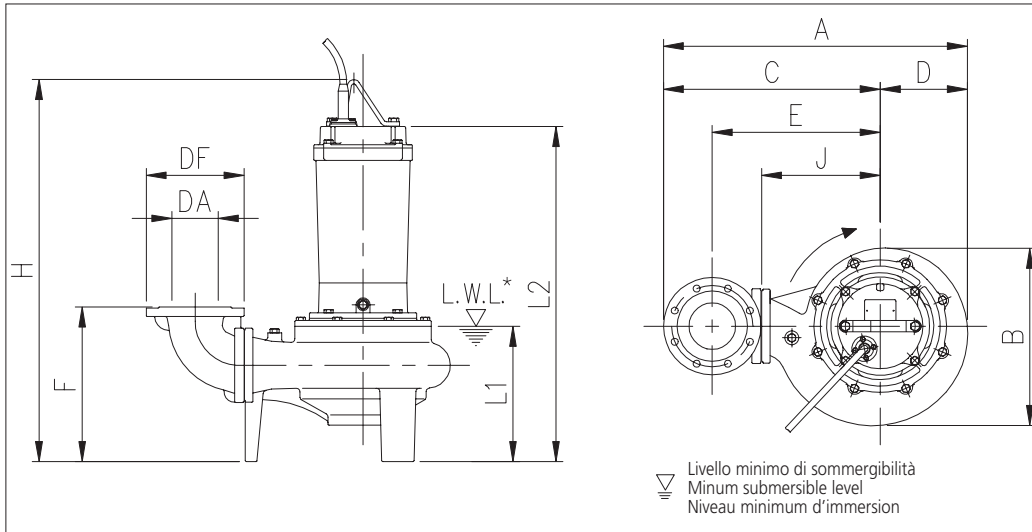
Peso Weight Poids	80 kg	Costruzione Construction Construction	GHISA CAST IRON FONTE
-------------------------	--------------	---	--------------------------------------

MOTORE • MOTOR • MOTEUR

Tensione Power Tension	380-415V% -10 +6% 50 Hz DOL	Cavo Cable Câble	10 m
Avviamento ora Starts per hour Nombre de démarrages par huere	10	P ₂	2.2 kW
Classe di isolamento Insulation class Classe d'isolation	F	Voltaggio Start Current Ampérage au démarrage	380 V 400 V 415 V
Grado di protezione Protection degree Indice de protection	IP 68	Corrente 100% Current 100% Ampérage 100%	24,30 A 25,7 A 26,7 A
		Velocità di rotazione (rpm) Rotation speed (rpm) Vitesse de rotation (rpm)	5,5 A 5,2 A 5,2 A
			1450

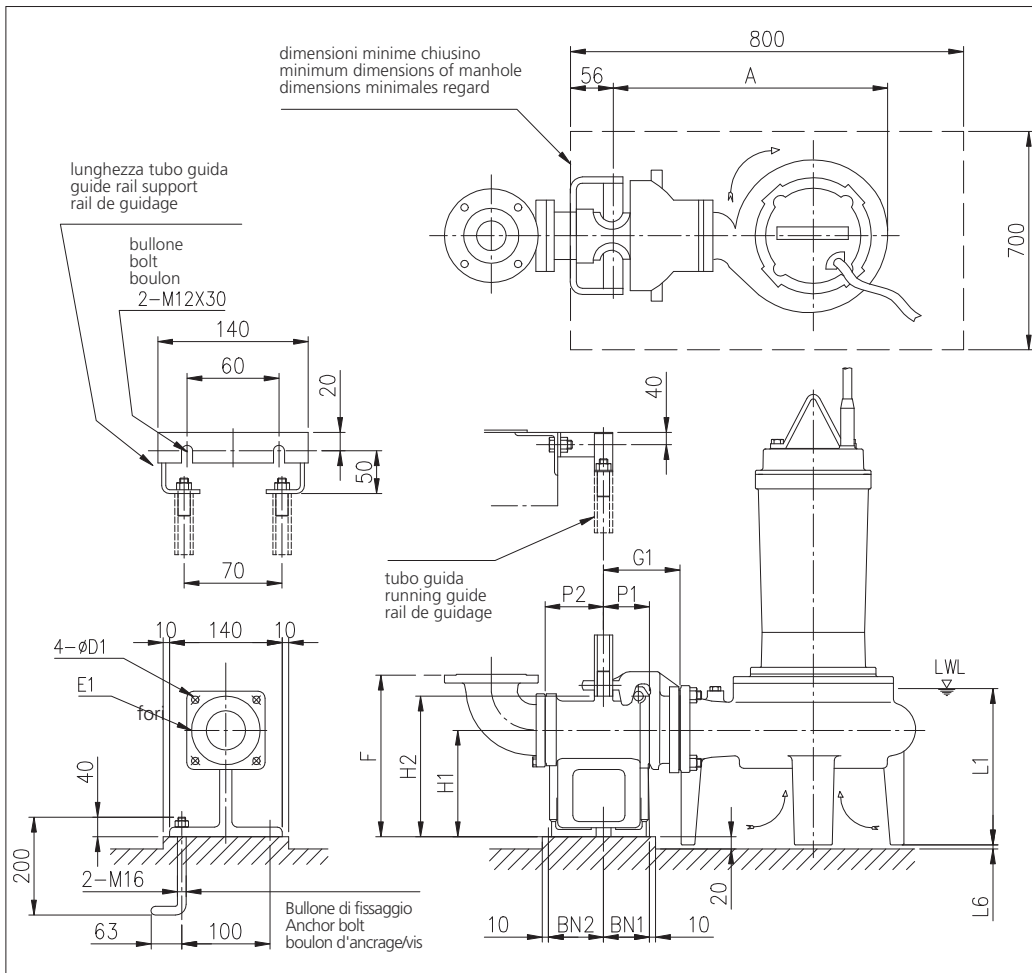


DIMENSIONI • DIMENSIONS • DIMENSIONS

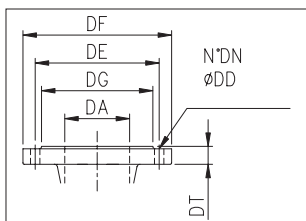


▽ Livello minimo di sommersibilità
Minum submersible level
Niveau minimum d'immersion

Mod.	Dim. [mm]											[kg]	
	DA	kW	A	B	C	D	E	F	H	J	L1		L2
80DML52.2	80	2,2	542	320	385	157	285	308	668	210	279	547	80,0



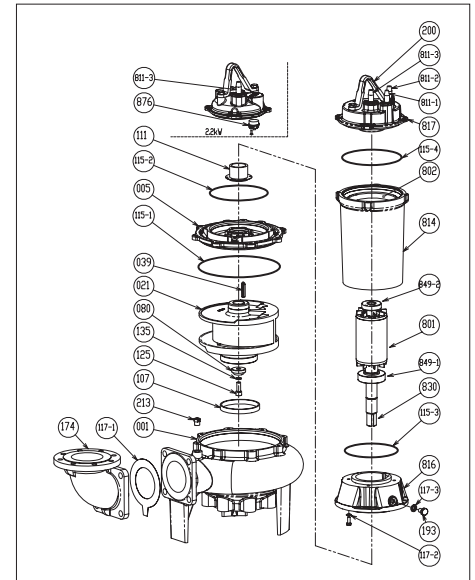
Mod.	Dim. [mm]													QDC	[kg]	
	A	P1	P2	G1	G2	F	H1	H2	L1	L6	BN1	BN2	D1			E1
80 DML 52.2	492	75	90	125	165	295	175	230	279	7	75	90	15	155	LM80	17,0



**DIMENSIONI FLANGE
DIMENSIONS FLANGES
DIMENSIONS BRIDES**

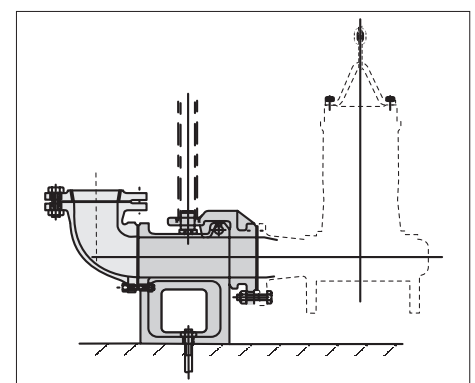
DA	DG	DE	Dim. DF	DT	N° DN	DD
80	138	160	200	22	8	18

RICAMBI • REPLACEMENT PARTS • PIÈCES DE RECHANGE



21	Girante - Impeller - Roue
039	Linguetta - Key - Languette
080	Bussola - Bushing - Bague d'usure
107	Anello di rasamento - Wear ring - Anneau arasement
111	Tenuta meccanica - Mechanical seal - Garniture mécanique
115-1	Anello OR - O-ring - Bague OR
115-2	Anello OR - O-ring - Bague OR
115-3	Anello OR - O-ring - Bague OR
115-4	Anello OR - O-ring - Bague OR
117-1	Guarnizione - Gasket - Joint
117-2	Guarnizione - Gasket - Joint
120-6	Vite - Screw - Vis
120-7	Vite - Screw - Vis
135	Rondella - Washer - Rondelle d'étanchiété
135-1	Rondella - Washer - Rondelle d'étanchiété
135-2	Dado - Nut - Écrou
174	Raccordo mandata - Discharge bend - raccord refoulement
275	Vite - Screw - Vis
811-1	Cavo - Cable - Câble
811-1	Cavo - Cable - Câble
811-2	Cavo segnale - Cable signal - Câble de signalisation
849-1	Cuscinetto - Bearing - Coussinet
849-2	Cuscinetto - Bearing - Coussinet

**MODELLO KIT SCIVOLO DISCESA (QDC)
QDC MODEL
MODÈLE KIT PIED D'ASSISE (QDC)
LM80**



GIRANTE MONOCANALE SINGLE-CHANNEL IMPELLER ROUE MONOCANAL

CURVE DI PRESTAZIONE • PERFORMANCE CURVES • COURBES DE PERFORMANCE

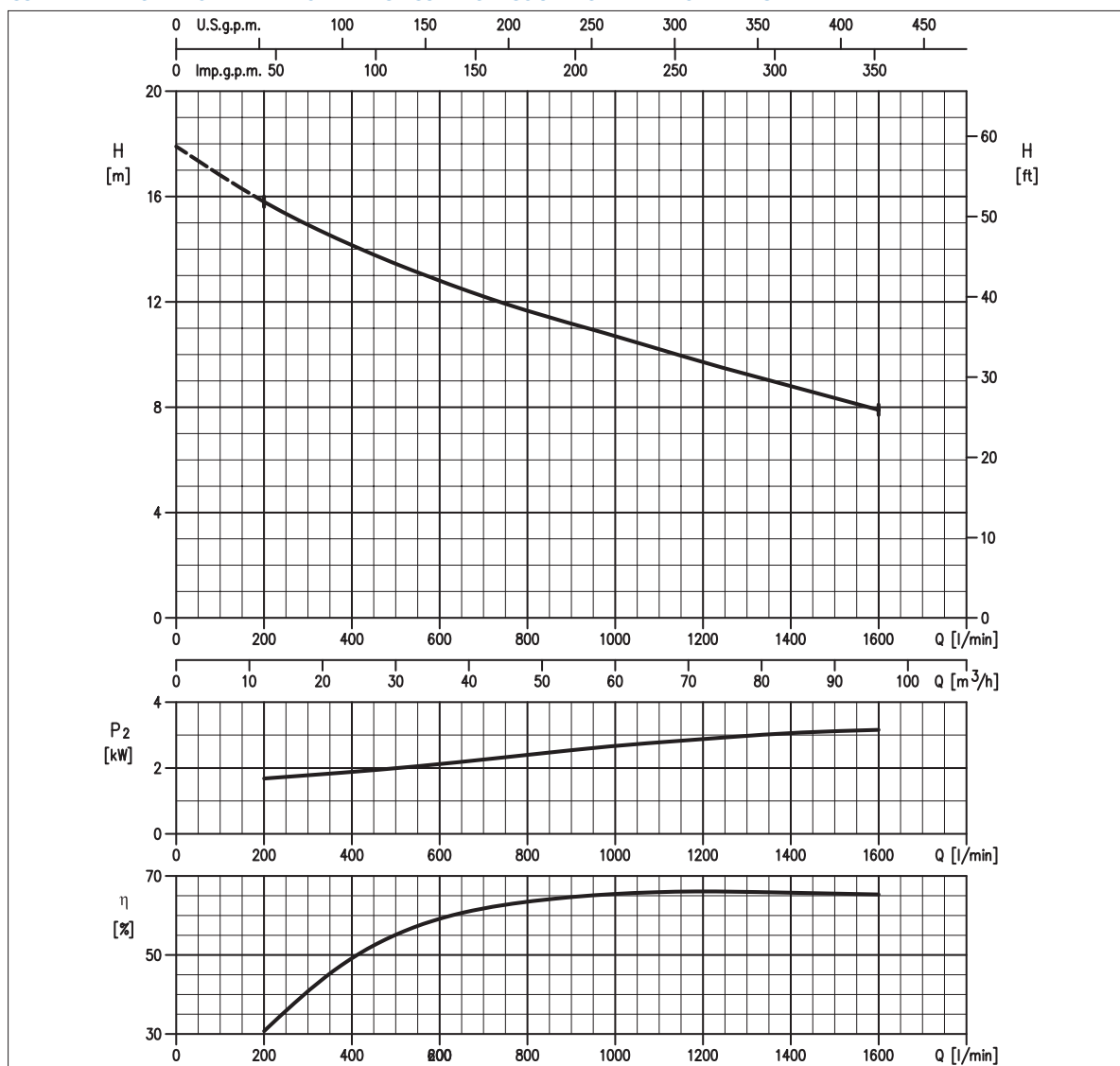


TABELLA PRESTAZIONI • PERFORMANCE TABLE • TABLEAU DE PERFORMANCES

Modello Model Modèle	P ₂		Q = Portata / Flow rate / Débit								
	[HP]	[kW]	l/min m³/h	200 12	400 24	600 36	800 48	1000 60	1200 72	1400 84	1600 96
80DML53.7	5	3,7		15,8	14,2	12,8	11,7	10,7	9,7	8,8	7,9

H = Prevalenza / Head / Hauteur manométrique totale [m]

IDRAULICA • HYDRAULIC • HYDRAULIQUE

Girante Impeller Roue	MONOCANALE SINGLE-CHANNEL MONOCANAL
Mandata Flanges Brides	DN 80 mm
Massimo diametro passaggi liberi Maximum solid diameter Passage libre maximum	76 mm
Temperatura massima del liquido Maximum liquid temperature Température maximale du liquide	40°C
Doppia tenuta meccanica Double mechanical seal Double garniture mécanique	SiC/SiC/NBR Cer/Carb/NBR

TIPO POMPA • PUMP TYPE • TYPE DE POMPE

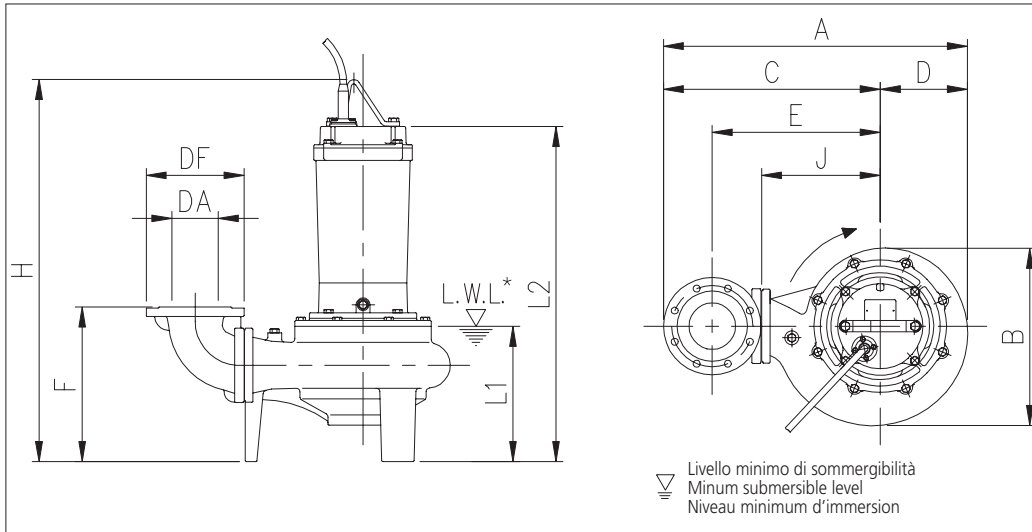
Peso Weight Poids	87 kg	Costruzione Construction Construction	GHISA CAST IRON FONTE
-------------------------	--------------	---	--------------------------------------

MOTORE • MOTOR • MOTEUR

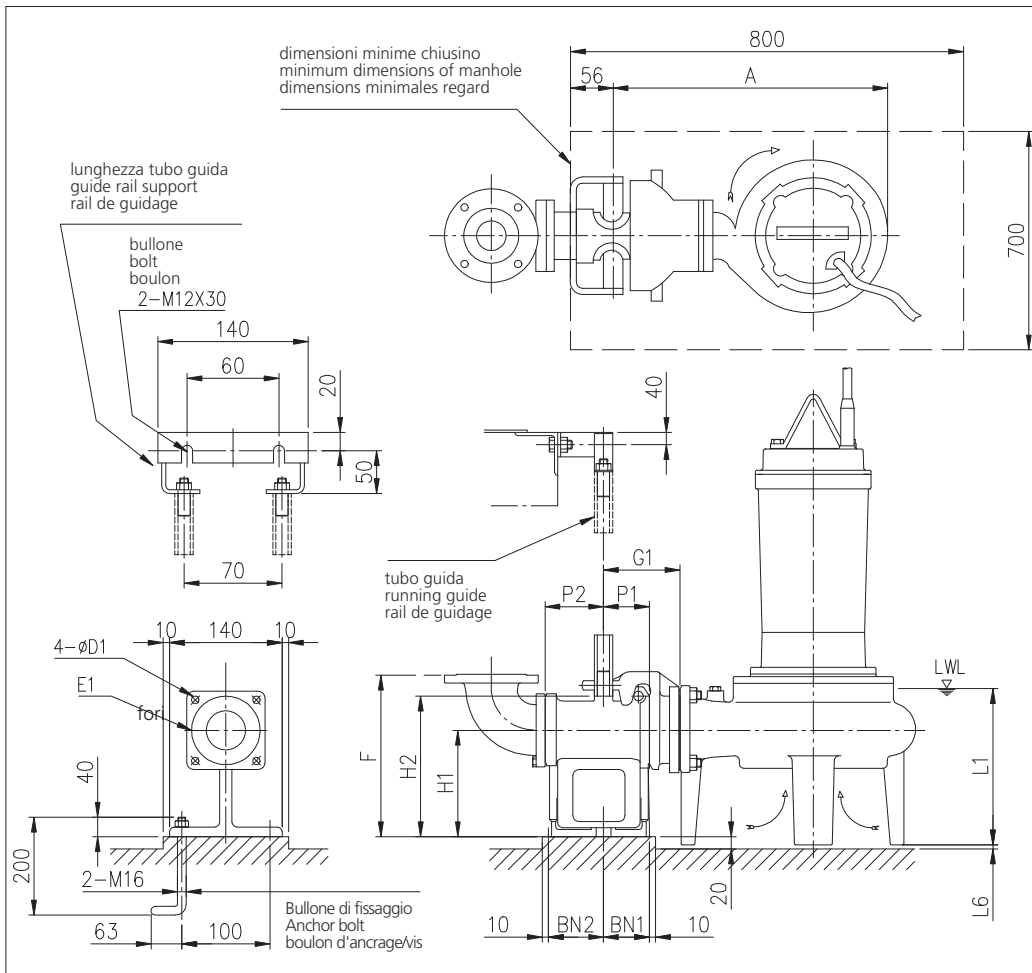
Tensione Power Tension	380-415V ±10% 50 Hz Y/Δ	Cavo Cable Câble	10 m
Avviamento ora Starts per hour Nombre de démarrages par huere	10	P ₂	3.7 kW
Classe di isolamento Insulation class Classe d'isolation	F	Voltaggio	380 V 400 V 415 V
Grado di protezione Protection degree Indice de protection	IP 68	Corrente di avviamento Start Current Ampérage au démarrage	45,5 A 48,1 A 50 A
		Corrente 100% Current 100% Ampérage 100%	8,6 A 8,4 A 8,4 A
		Velocità di rotazione (rpm) Rotation speed (rpm) Vitesse de rotation (rpm)	1450



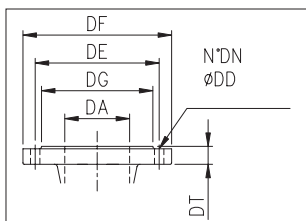
DIMENSIONI • DIMENSIONS • DIMENSIONS



Mod.	Dim. [mm]											[kg]	
	DA	kW	A	B	C	D	E	F	H	J	L1		L2
80DML53.7	80	3,7	542	320	385	157	285	308	727	210	279	627	87,0



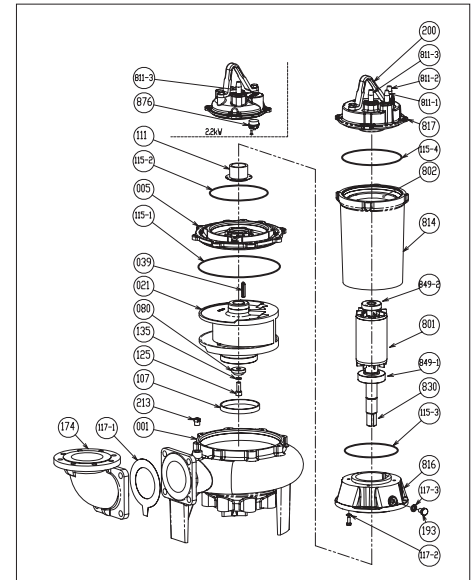
Mod.	Dim. [mm]													QDC	[kg]	
	A	P1	P2	G1	G2	F	H1	H2	L1	L6	BN1	BN2	D1			E1
80 DML 53.7	492	75	90	125	165	295	175	230	279	7	75	90	15	155	LM80	17,0



**DIMENSIONI FLANGE
DIMENSIONS FLANGES
DIMENSIONS BRIDES**

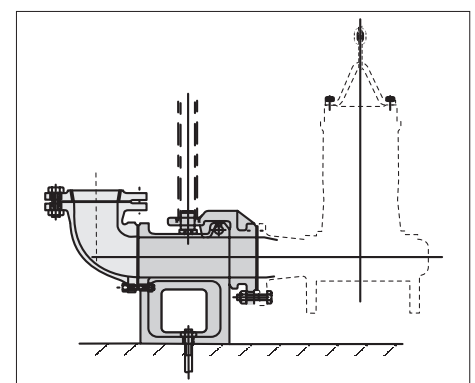
DA	DG	DE	Dim. DF	DT	N° DN	DD
80	138	160	200	22	8	18

RICAMBI • REPLACEMENT PARTS • PIÈCES DE RECHANGE



21	Girante - Impeller - Roue
039	Linguetta - Key - Languette
080	Bussola - Bushing - Bague d'usure
107	Anello di rasamento - Wear ring - Anneau arasement
111	Tenuta meccanica - Mechanical seal - Garniture mécanique
115-1	Anello OR - O-ring - Bague OR
115-2	Anello OR - O-ring - Bague OR
115-3	Anello OR - O-ring - Bague OR
115-4	Anello OR - O-ring - Bague OR
117-1	Guarnizione - Gasket - Joint
117-2	Guarnizione - Gasket - Joint
120-6	Vite - Screw - Vis
120-7	Vite - Screw - Vis
135	Rondella - Washer - Rondelle d'étanchiété
135-1	Rondella - Washer - Rondelle d'étanchiété
135-2	Dado - Nut - Écrou
174	Raccordo mandata - Discharge bend - raccord refoulement
275	Vite - Screw - Vis
811-1	Cavo - Cable - Câble
811-1	Cavo - Cable - Câble
811-2	Cavo segnale - Cable signal - Câble de signalisation
849-1	Cuscinetto - Bearing - Coussinet
849-2	Cuscinetto - Bearing - Coussinet

**MODELLO KIT SCIVOLO DISCESA (QDC)
QDC MODEL
MODÈLE KIT PIED D'ASSISE (QDC)
LM80**



GIRANTE MONOCANALE SINGLE-CHANNEL IMPELLER ROUE MONOCANAL

CURVE DI PRESTAZIONE • PERFORMANCE CURVES • COURBES DE PERFORMANCE

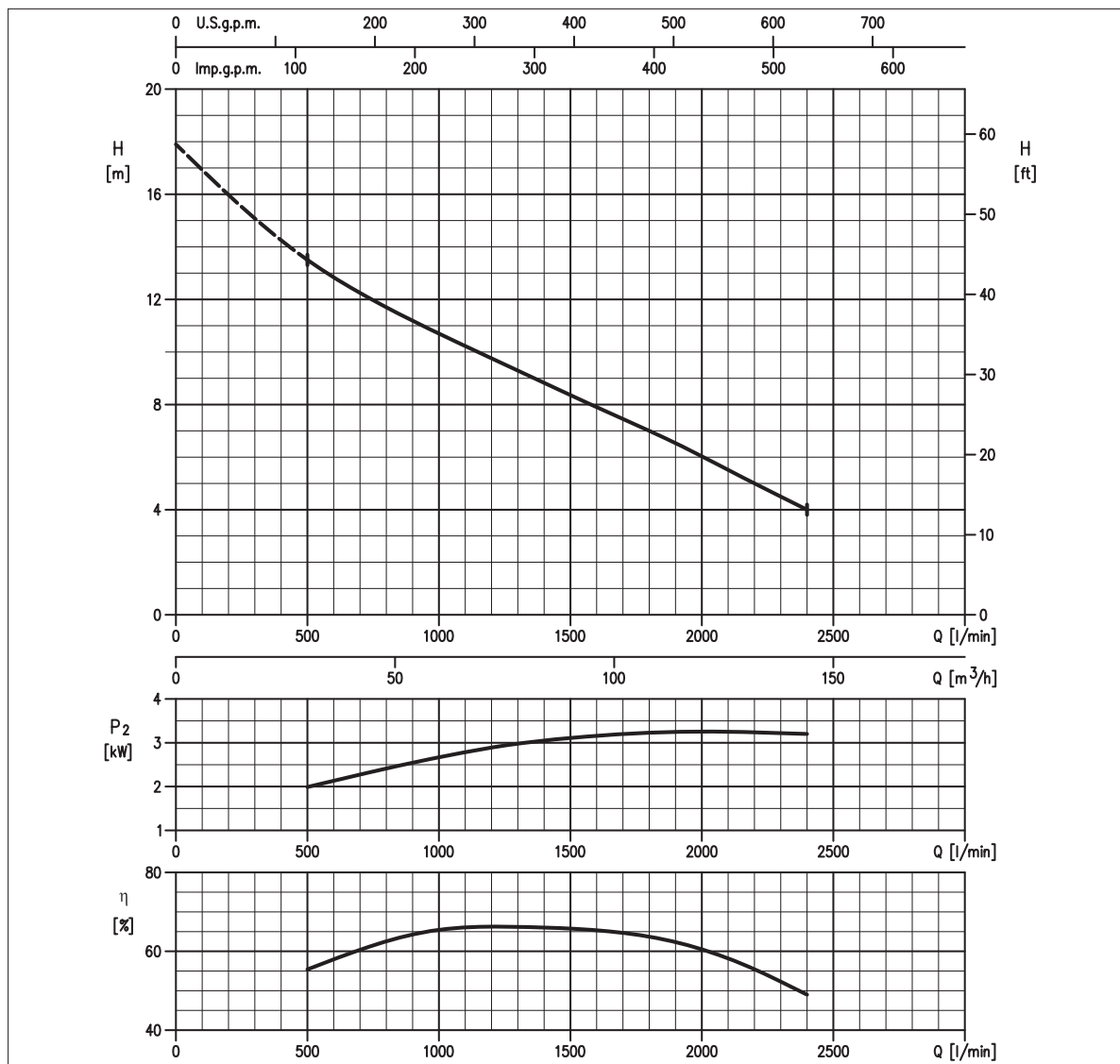


TABELLA PRESTAZIONI • PERFORMANCE TABLE • TABLEAU DE PERFORMANCES

Modello Model Modèle	P ₂		Q = Portata / Flow rate / Débit								
	[HP]	[kW]	l/min m³/h	500 30	1000 60	1300 78	1600 96	1900 114	2200 132	2400 144	2500 150
100DML53.7	5	3,7		13,5	10,7	9,3	7,9	6,5	5,0	4,0	-

H = Prevalenza / Head / Hauteur manométrique totale [m]

IDRAULICA • HYDRAULIC • HYDRAULIQUE

Girante Impeller Roue	MONOCANALE SINGLE-CHANNEL MONOCANAL
Mandata Flanges Brides	DN 100 mm
Massimo diametro passaggi liberi Maximum solid diameter Passage libre maximum	76 mm
Temperatura massima del liquido Maximum liquid temperature Température maximale du liquide	40°C
Doppia tenuta meccanica Double mechanical seal Double garniture mécanique	SiC/SiC/NBR Cer/Carb/NBR

TIPO POMPA • PUMP TYPE • TYPE DE POMPE

Peso Weight Poids	89 kg	Costruzione Construction Construction	GHISA CAST IRON FONTE
-------------------------	--------------	---	--------------------------------------

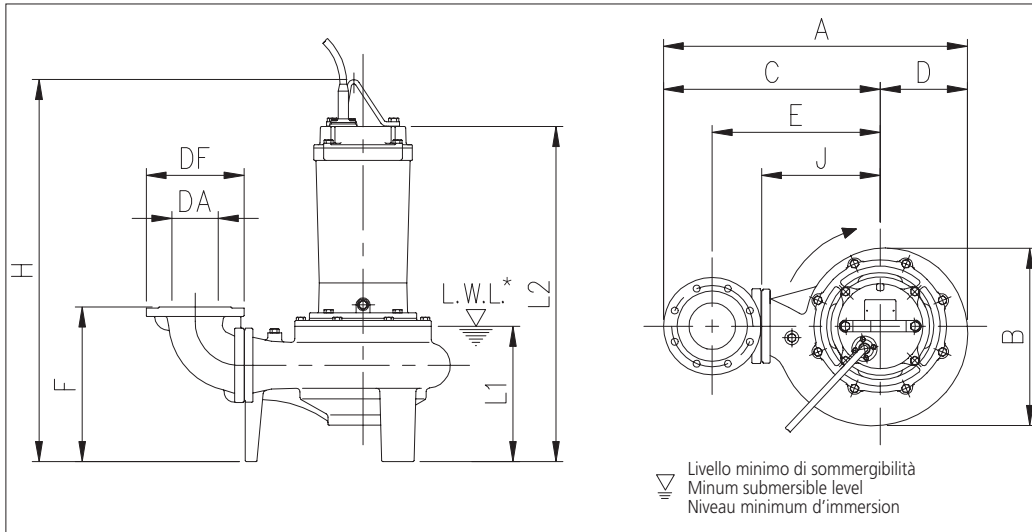
MOTORE • MOTOR • MOTEUR

Tensione Power Tension	380-415V ±10% 50 Hz Y/Δ	Cavo Cable Câble	10 m
Avviamento ora Starts per hour Nombre de démarrages par huere	10	P ₂	3.7 kW
Classe di isolamento Insulation class Classe d'isolation	F	Voltaggio Start Current Ampérage au démarrage	380 V 400 V 415 V
Grado di protezione Protection degree Indice de protection	IP 68	Corrente di avviamento Start Current Ampérage au démarrage	45,5 A 48,1 A 50 A
		Corrente 100% Current 100% Ampérage 100%	8,6 A 8,4 A 8,4 A
		Velocità di rotazione (rpm) Rotation speed (rpm) Vitesse de rotation (rpm)	1450

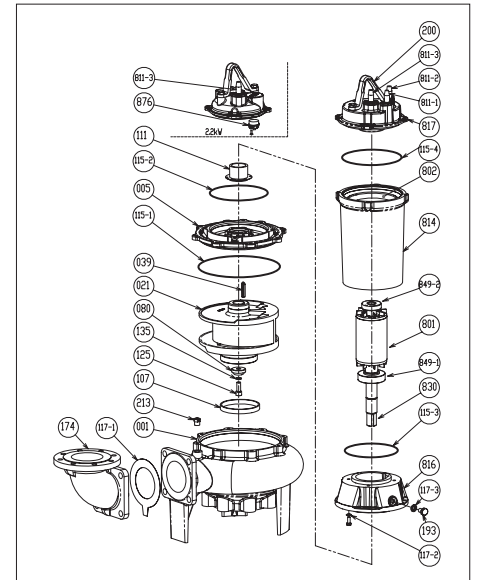


DIMENSIONI • DIMENSIONS • DIMENSIONS

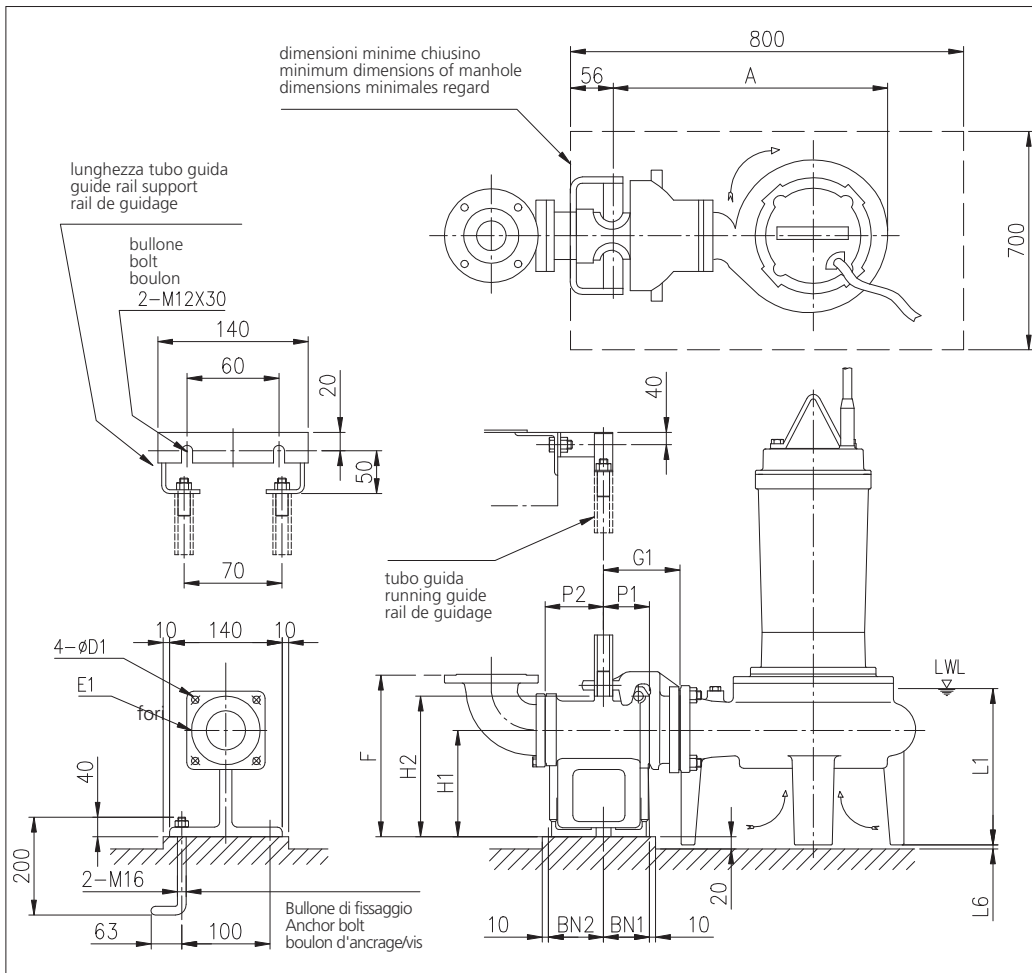
RICAMBI • REPLACEMENT PARTS • PIÈCES DE RECHANGE



Mod.	Dim. [mm]												[kg]
	DA	kW	A	B	C	D	E	F	H	J	L1	L2	
100DML53.7	100	3,7	582	320	425	157	315	313	727	210	279	627	89,0

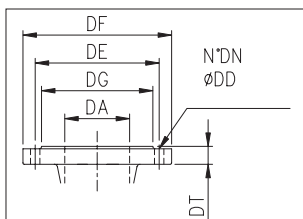
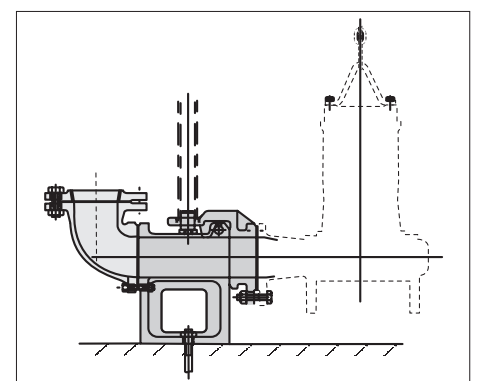


21	Girante - Impeller - Roue
039	Linguetta - Key - Languette
080	Bussola - Bushing - Bague d'usura
107	Anello di rasamento - Wear ring - Anneau arasement
111	Tenuta meccanica - Mechanical seal - Garniture mécanique
115-1	Anello OR - O-ring - Bague OR
115-2	Anello OR - O-ring - Bague OR
115-3	Anello OR - O-ring - Bague OR
115-4	Anello OR - O-ring - Bague OR
117-1	Guarnizione - Gasket - Joint
117-2	Guarnizione - Gasket - Joint
120-6	Vite - Screw - Vis
120-7	Vite - Screw - Vis
135	Rondella - Washer - Rondelle d'étanchiété
135-1	Rondella - Washer - Rondelle d'étanchiété
135-2	Dado - Nut - Écrou
174	Raccordo mandata - Discharge bend - raccord refoulement
275	Vite - Screw - Vis
811-1	Cavo - Cable - Câble
811-1	Cavo - Cable - Câble
811-2	Cavo segnale - Cable signal - Câble de signalisation
849-1	Cuscinetto - Bearing - Coussinet
849-2	Cuscinetto - Bearing - Coussinet



Mod.	Dim. [mm]														QDC	[kg]
	A	P1	P2	G1	G2	F	H1	H2	L1	L6	BN1	BN2	D1	E1		
100DML53.7	492	75	90	125	195	300	175	230	279	7	75	90	15	155	LM80	17,0

**MODELLO KIT SCIVOLO DISCESA (QDC)
QDC MODEL
MODÈLE KIT PIED D'ASSISE (QDC)
LM80**



**DIMENSIONI FLANGE
DIMENSIONS FLANGES
DIMENSIONS BRIDES**

Dim.						
DA	DG	DE	DF	DT	N° DN	DD
100	158	180	220	24	8	18

GIRANTE MONOCANALE SINGLE-CHANNEL IMPELLER ROUE MONOCANAL

CURVE DI PRESTAZIONE • PERFORMANCE CURVES • COURBES DE PERFORMANCE

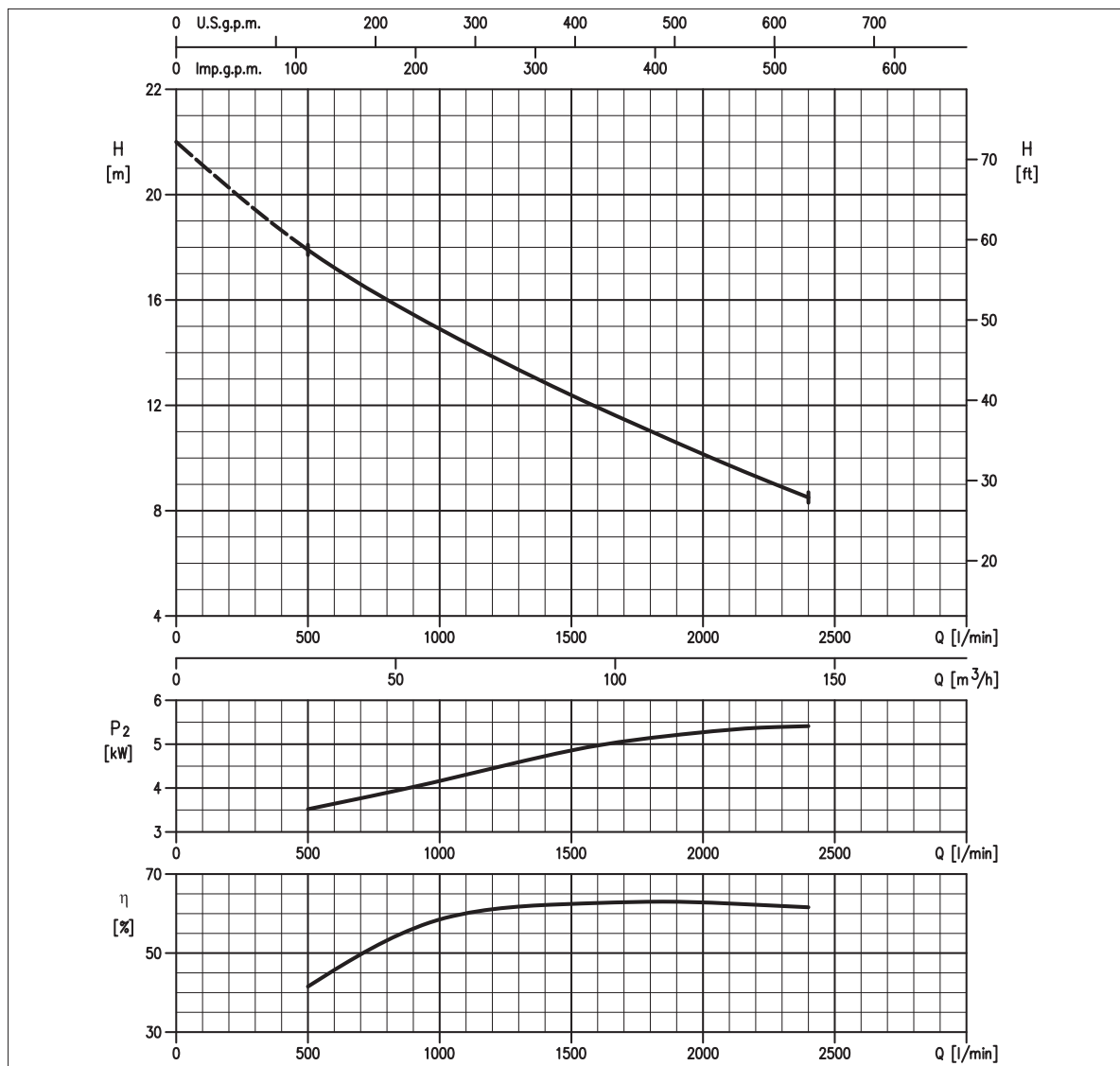


TABELLA PRESTAZIONI • PERFORMANCE TABLE • TABLEAU DE PERFORMANCES

Modello Model Modèle	P ₂		Q = Portata / Flow rate / Débit								
	[HP]	[kW]	l/min m³/h	500 30	1000 60	1300 78	1600 96	1900 114	2200 132	2400 144	2500 150
100DML55.5	7,5	5,5		17,9	14,9	13,4	11,9	10,6	9,3	8,5	-

H = Prevalenza / Head / Hauteur manométrique totale [m]

IDRAULICA • HYDRAULIC • HYDRAULIQUE

Girante Impeller Roue	MONOCANALE SINGLE-CHANNEL MONOCANAL
Mandata Flanges Brides	DN 100 mm
Massimo diametro passaggi liberi Maximum solid diameter Passage libre maximum	76 mm
Temperatura massima del liquido Maximum liquid temperature Température maximale du liquide	40°C
Doppia tenuta meccanica Double mechanical seal Double garniture mécanique	SiC/SiC/NBR Cer/Carb/NBR

TIPO POMPA • PUMP TYPE • TYPE DE POMPE

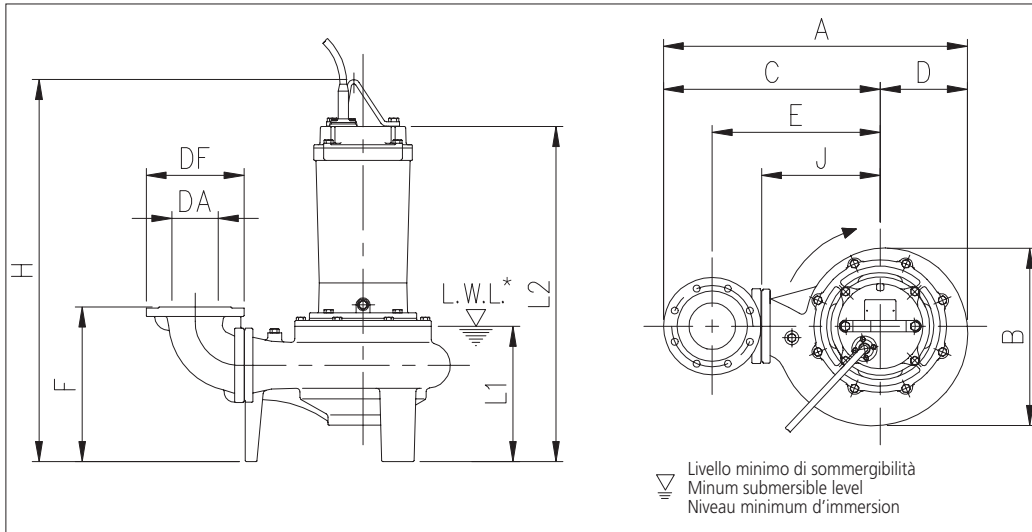
Peso Weight Poids	121 kg	Costruzione Construction Construction	GHISA CAST IRON FONTE
-------------------------	---------------	---	--------------------------------------

MOTORE • MOTOR • MOTEUR

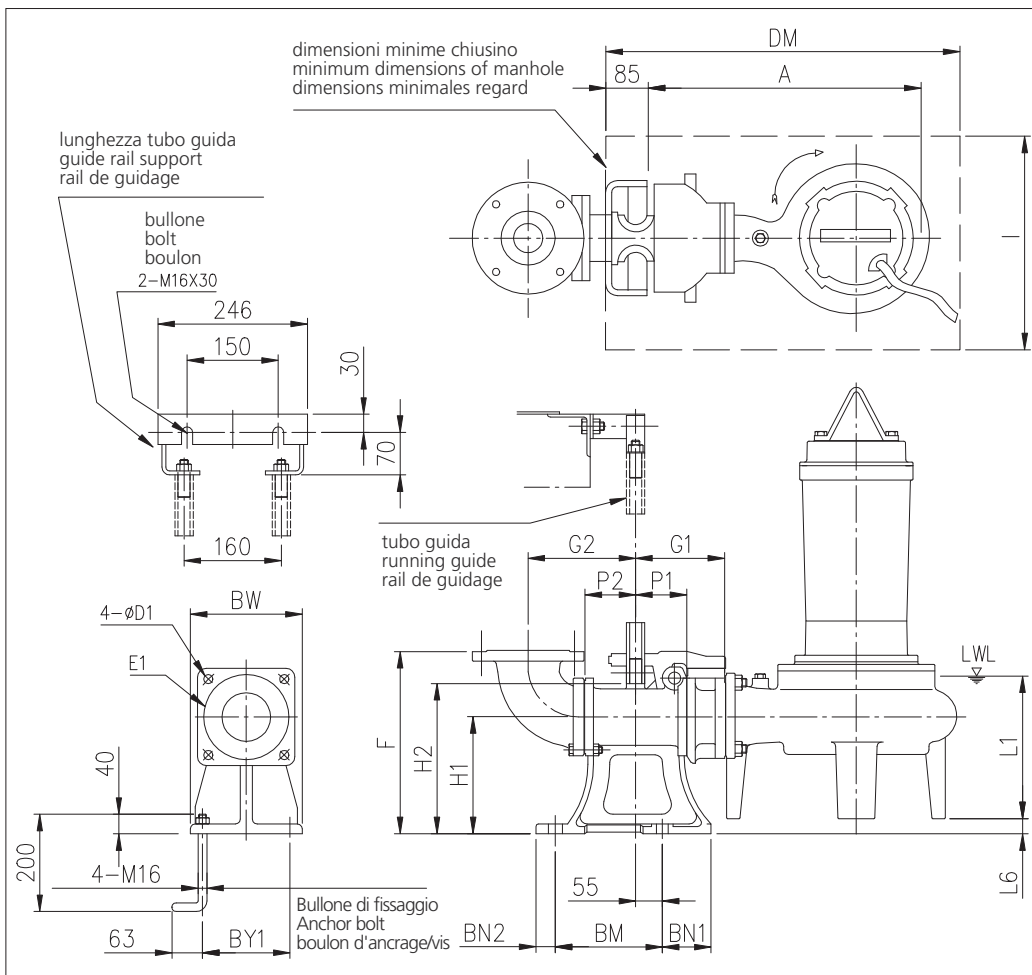
Tensione Power Tension	380-415V ±10% 50 Hz Y/Δ	Cavo Cable Câble	10 m
Avviamento ora Starts per hour Nombre de démarrages par huere	10	P ₂	5.5 kW
Classe di isolamento Insulation class Classe d'isolation	F	Voltaggio Start Current Ampérage au démarrage	380 V 400 V 415 V
Grado di protezione Protection degree Indice de protection	IP 68	Corrente di avviamento Start Current Ampérage au démarrage	78 A 82,6 A 87,8 A
		Corrente 100% Current 100% Ampérage 100%	12,7 A 12,6 A 12,7 A
		Velocità di rotazione (rpm) Rotation speed (rpm) Vitesse de rotation (rpm)	1450



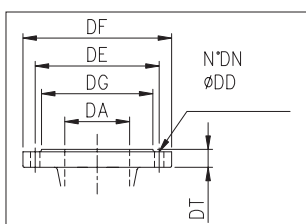
DIMENSIONI • DIMENSIONS • DIMENSIONS



Mod.	Dim. [mm]												[kg]
	DA	kW	A	B	C	D	E	F	H	J	L1	L2	
100DML55.5	100	5,5	658	381	470	188	360	339	824	255	310	724	121,0



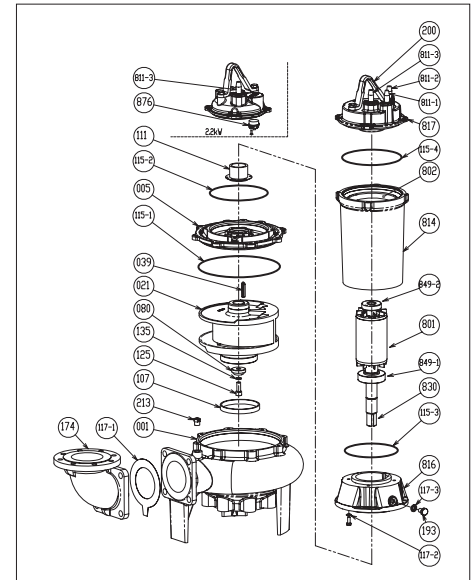
Mod.	Dim. [mm]																	Piede di accopp. Coupling foot Pied d'accoupl.	[kg]		
	A	P1	P2	G1	G2	F	H1	H2	L1	L6	BN1	BN2	BM	BY1	BW	DM	I			D1	E1
100DML55.5	628	105	105	185	210	370	240	265	310	31	100	40	220	180	230	800	700	19	175	LL100	46,0



**DIMENSIONI FLANGE
DIMENSIONS FLANGES
DIMENSIONS BRIDES**

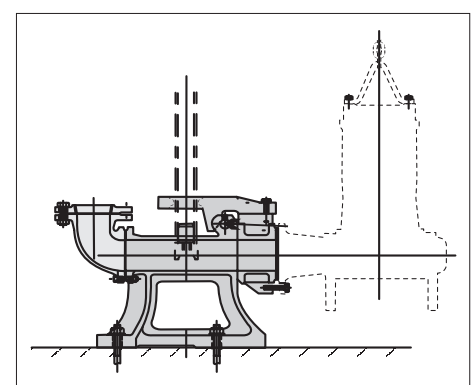
DA	DG	DE	Dim. DF	DT	N° DN	DD
100	158	180	220	24	8	18

RICAMBI • REPLACEMENT PARTS • PIÈCES DE RECHANGE



21	Girante - Impeller - Roue
039	Linguetta - Key - Languette
080	Bussola - Bushing - Bague d'usure
107	Anello di rasamento - Wear ring - Anneau arasement
111	Tenuta meccanica - Mechanical seal - Garniture mécanique
115-1	Anello OR - O-ring - Bague OR
115-2	Anello OR - O-ring - Bague OR
115-3	Anello OR - O-ring - Bague OR
115-4	Anello OR - O-ring - Bague OR
117-1	Guarnizione - Gasket - Joint
117-2	Guarnizione - Gasket - Joint
120-6	Vite - Screw - Vis
120-7	Vite - Screw - Vis
135	Rondella - Washer - Rondelle d'étanchiété
135-1	Rondella - Washer - Rondelle d'étanchiété
135-2	Dado - Nut - Écrou
174	Raccordo mandata - Discharge bend - raccord refoulement
275	Vite - Screw - Vis
811-1	Cavo - Cable - Câble
811-1	Cavo - Cable - Câble
811-2	Cavo segnale - Cable signal - Câble de signalisation
849-1	Cuscinetto - Bearing - Coussinet
849-2	Cuscinetto - Bearing - Coussinet

**MODELLO KIT SCIVOLO DISCESA (QDC)
QDC MODEL
MODÈLE KIT PIED D'ASSISE (QDC)
LL100**



GIRANTE MONOCANALE SINGLE-CHANNEL IMPELLER ROUE MONOCANAL

CURVE DI PRESTAZIONE • PERFORMANCE CURVES • COURBES DE PERFORMANCE

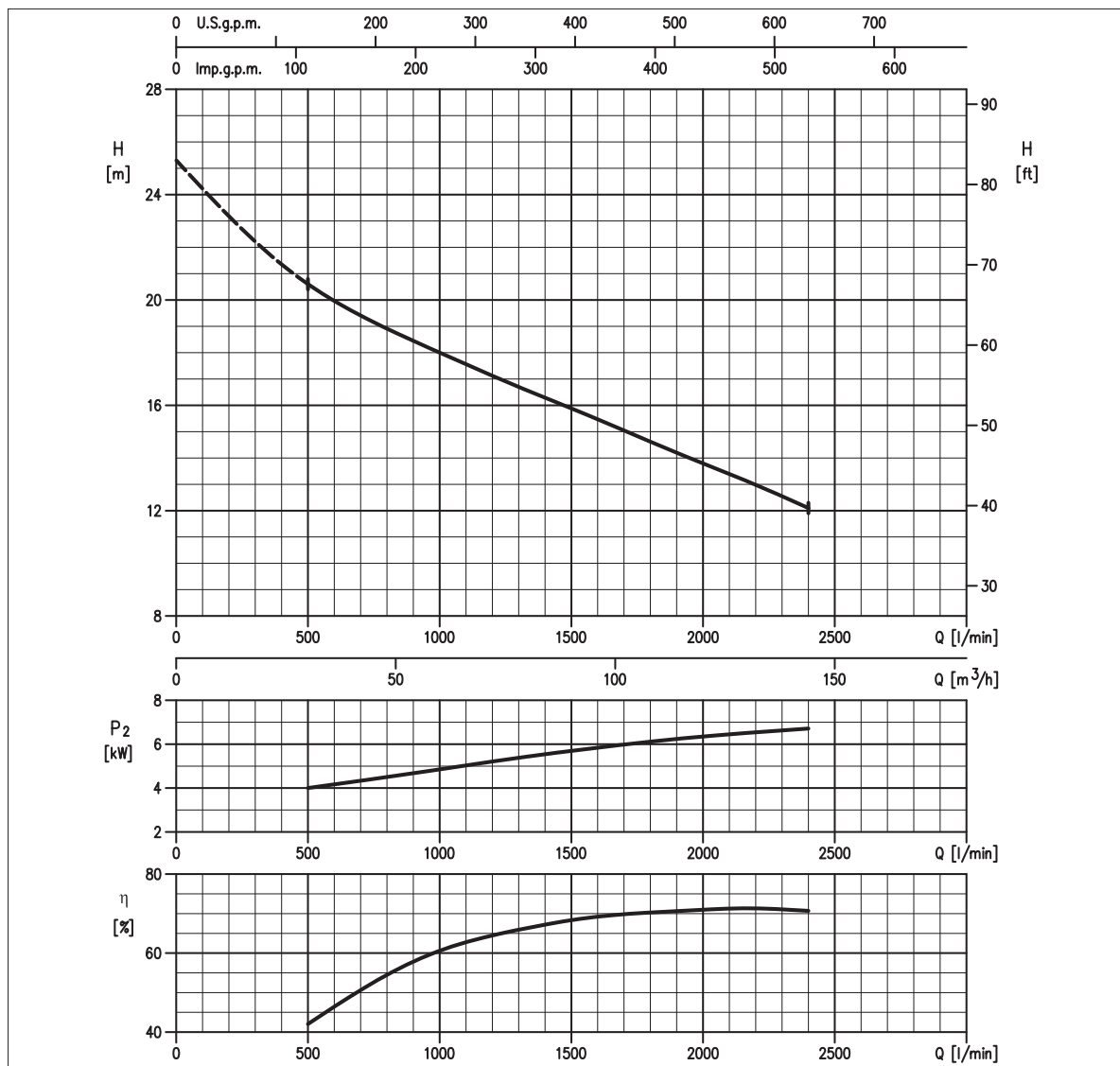


TABELLA PRESTAZIONI • PERFORMANCE TABLE • TABLEAU DE PERFORMANCES

Modello Model Modèle	P ₂		Q = Portata / Flow rate / Débit								
	[HP]	[kW]	l/min m³/h	500 30	1000 60	1300 78	1600 96	1900 114	2200 132	2400 144	2500 150
100DML57.5	10	7,5		20,6	18,0	16,7	15,5	14,2	13,0	12,1	-

H = Prevalenza / Head / Hauteur manométrique totale [m]

IDRAULICA • HYDRAULIC • HYDRAULIQUE

Girante Impeller Roue	MONOCANALE SINGLE-CHANNEL MONOCANAL
Mandata Flanges Brides	DN 100 mm
Massimo diametro passaggi liberi Maximum solid diameter Passage libre maximum	76 mm
Temperatura massima del liquido Maximum liquid temperature Température maximale du liquide	40°C
Doppia tenuta meccanica Double mechanical seal Double garniture mécanique	SiC/SiC/NBR Cer/Carb/NBR

TIPO POMPA • PUMP TYPE • TYPE DE POMPE

Peso Weight Poids	125 kg	Costruzione Construction Construction	GHISA CAST IRON FONTE
-------------------------	---------------	---	--------------------------------------

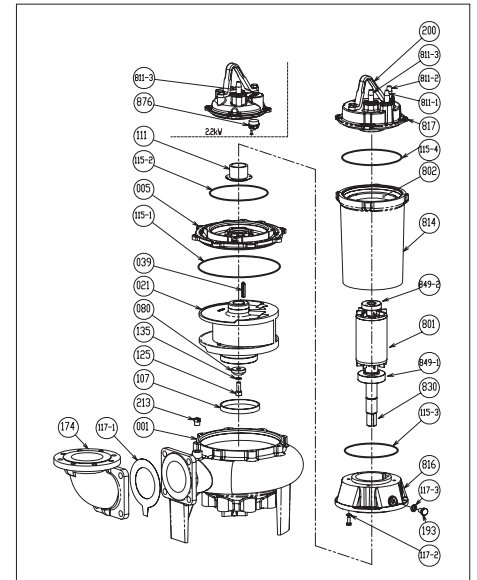
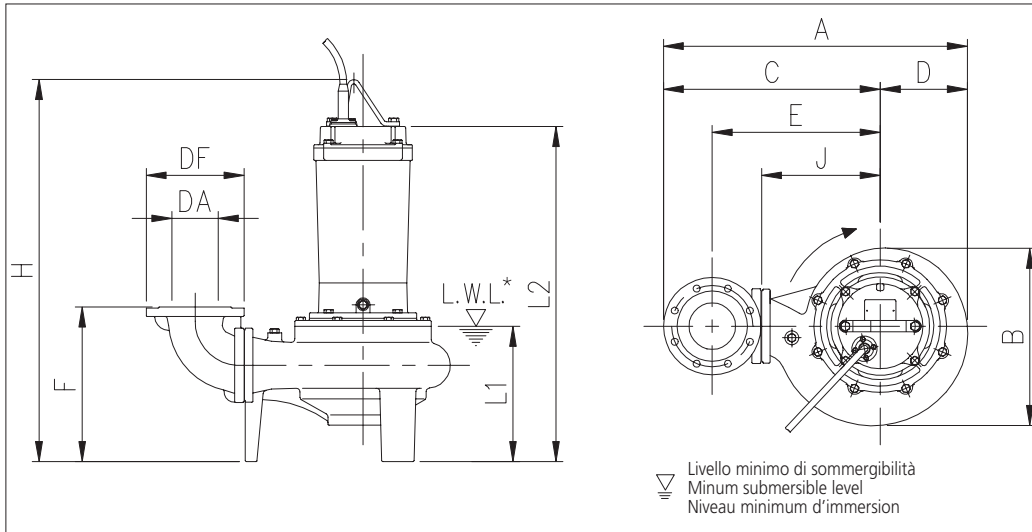
MOTORE • MOTOR • MOTEUR

Tensione Power Tension	380-415V ±10% 50 Hz Y/Δ	Cavo Cable Câble	10 m
Avviamento ora Starts per hour Nombre de démarrages par huere	10	P ₂	7.5 kW
Classe di isolamento Insulation class Classe d'isolation	F	Voltaggio Start Current Ampérage au démarrage	380 V 400 V 415 V
Grado di protezione Protection degree Indice de protection	IP 68	Corrente di avviamento Start Current Ampérage 100%	110,2 A 116,5 A 121,7 A
		Corrente 100% Current 100% Ampérage 100%	16,9 A 16,9 A 17,1 A
		Velocità di rotazione (rpm) Rotation speed (rpm) Vitesse de rotation (rpm)	1450



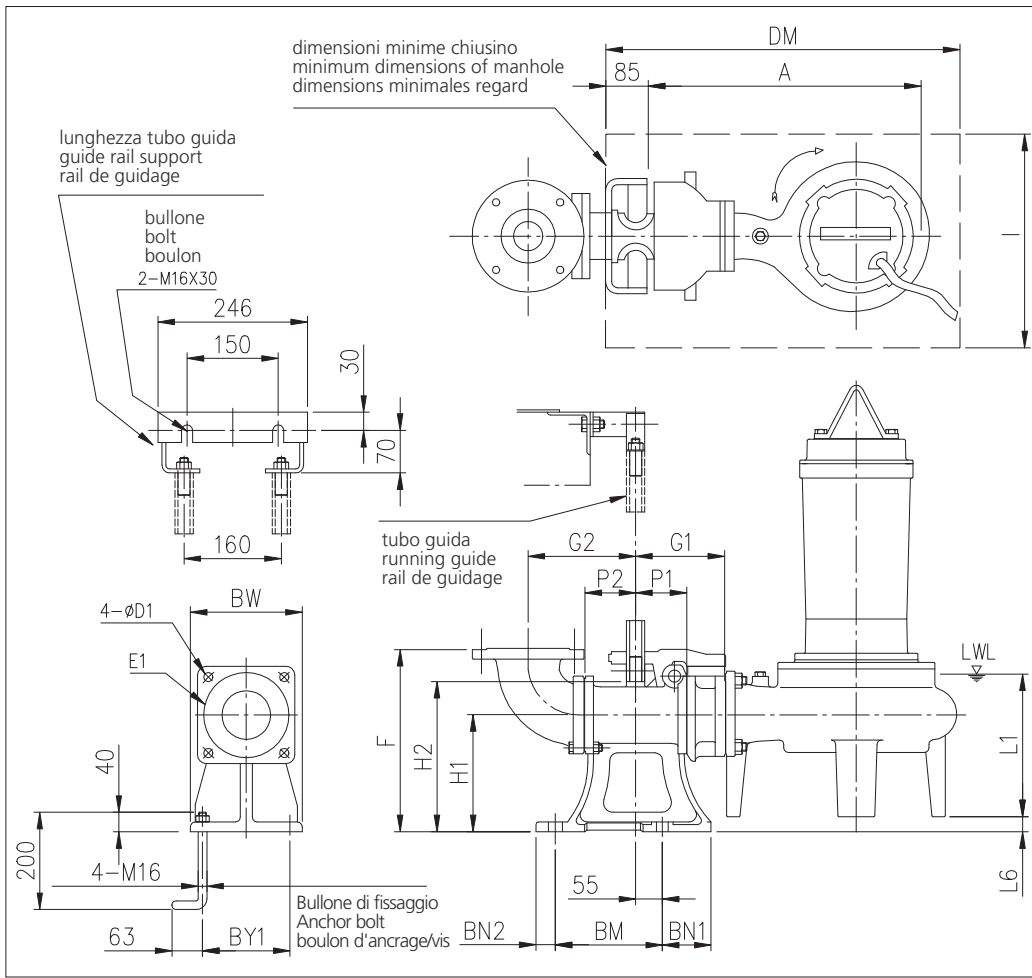
DIMENSIONI • DIMENSIONS • DIMENSIONS

RICAMBI • REPLACEMENT PARTS • PIÈCES DE RECHANGE



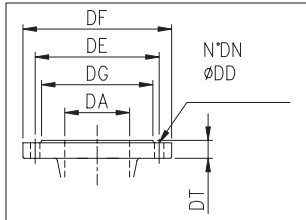
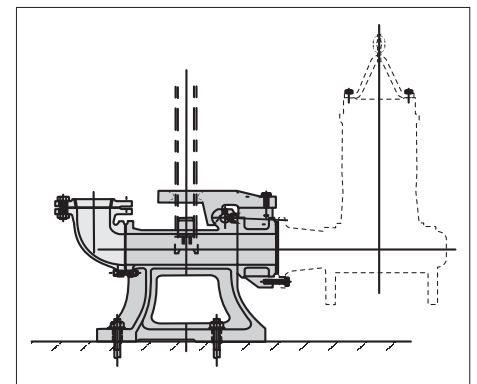
Mod.	Dim. [mm]												[kg]
	DA	kW	A	B	C	D	E	F	H	J	L1	L2	
100DML57.5	100	7,5	658	381	470	188	360	339	824	255	310	724	125,0

21	Girante - Impeller - Roue
039	Linguetta - Key - Languette
080	Bussola - Bushing - Bague d'usure
107	Anello di rasamento - Wear ring - Anneau arasement
111	Tenuta meccanica - Mechanical seal - Garniture mécanique
115-1	Anello OR - O-ring - Bague OR
115-2	Anello OR - O-ring - Bague OR
115-3	Anello OR - O-ring - Bague OR
115-4	Anello OR - O-ring - Bague OR
117-1	Guarnizione - Gasket - Joint
117-2	Guarnizione - Gasket - Joint
120-6	Vite - Screw - Vis
120-7	Vite - Screw - Vis
135	Rondella - Washer - Rondelle d'étanchiété
135-1	Rondella - Washer - Rondelle d'étanchiété
135-2	Dado - Nut - Écrou
174	Raccordo mandata - Discharge bend - raccord refoulement
275	Vite - Screw - Vis
811-1	Cavo - Cable - Câble
811-1	Cavo - Cable - Câble
811-2	Cavo segnale - Cable signal - Câble de signalisation
849-1	Cuscinetto - Bearing - Coussinet
849-2	Cuscinetto - Bearing - Coussinet



**MODELLO KIT SCIVOLO DISCESA (QDC)
QDC MODEL
MODÈLE KIT PIED D'ASSISE (QDC)
LL100**

Mod.	Dim. [mm]																Piede di accopp. Coupling foot Pied d'accoupl.	[kg]			
	A	P1	P2	G1	G2	F	H1	H2	L1	L6	BN1	BN2	BM	BY1	BW	DM			I	D1	E1
100DML57.5	628	105	105	185	210	370	240	265	310	31	100	40	220	180	230	800	700	19	175	LL100	46,0



**DIMENSIONI FLANGE
DIMENSIONS FLANGES
DIMENSIONS BRIDES**

DA	DG	DE	Dim. DF	DT	N° DN	DD
100	158	180	220	24	8	18

GIRANTE MONOCANALE SINGLE-CHANNEL IMPELLER ROUE MONOCANAL

CURVE DI PRESTAZIONE • PERFORMANCE CURVES • COURBES DE PERFORMANCE

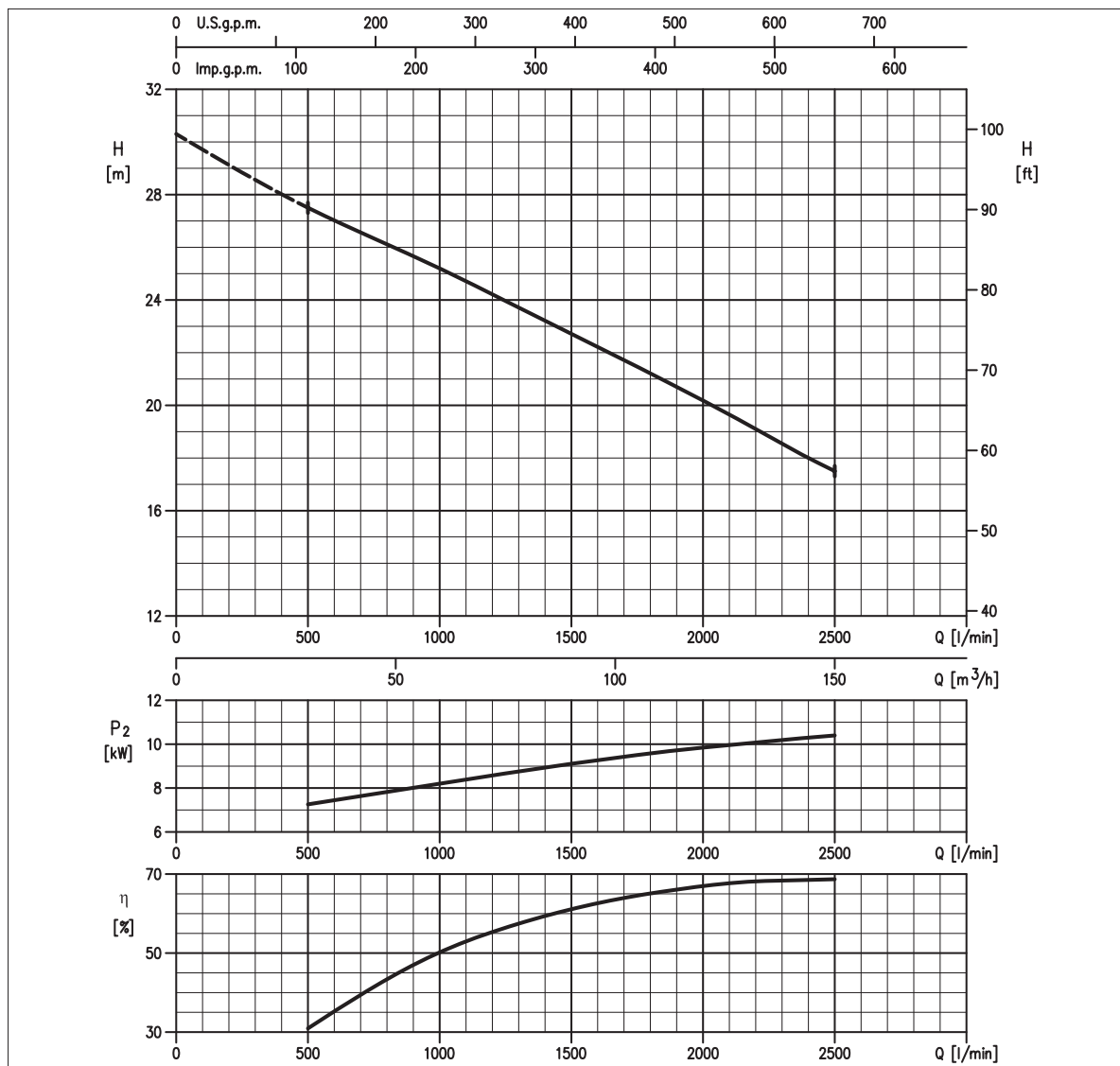


TABELLA PRESTAZIONI • PERFORMANCE TABLE • TABLEAU DE PERFORMANCES

Modello Model Modèle	P ₂		Q = Portata / Flow rate / Débit								
	[HP]	[kW]	l/min m³/h	500 30	1000 60	1300 78	1600 96	1900 114	2200 132	2400 144	2500 150
100DML511	15	11		27,5	25,2	23,7	22,2	20,7	19,1	18,0	17,5

H = Prevalenza / Head / Hauteur manométrique totale [m]

IDRAULICA • HYDRAULIC • HYDRAULIQUE

Girante Impeller Roue	MONOCANALE SINGLE-CHANNEL MONOCANAL
Mandata Flanges Brides	DN 100 mm
Massimo diametro passaggi liberi Maximum solid diameter Passage libre maximum	76 mm
Temperatura massima del liquido Maximum liquid temperature Température maximale du liquide	40°C
Doppia tenuta meccanica Double mechanical seal Double garniture mécanique	SiC/SiC/NBR Cer/Carb/NBR

TIPO POMPA • PUMP TYPE • TYPE DE POMPE

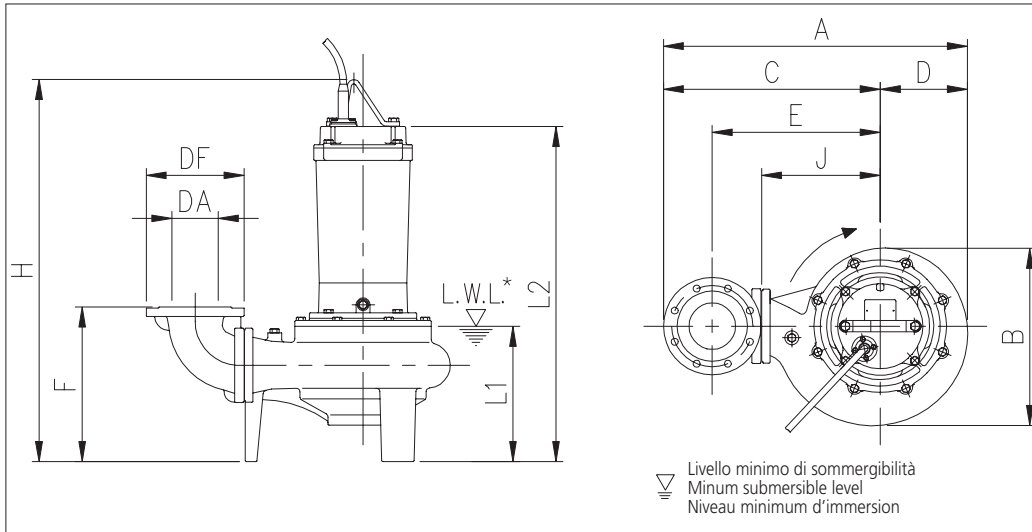
Peso Weight Poids	160 kg	Costruzione Construction Construction	GHISA CAST IRON FONTE
-------------------------	---------------	---	--------------------------------------

MOTORE • MOTOR • MOTEUR

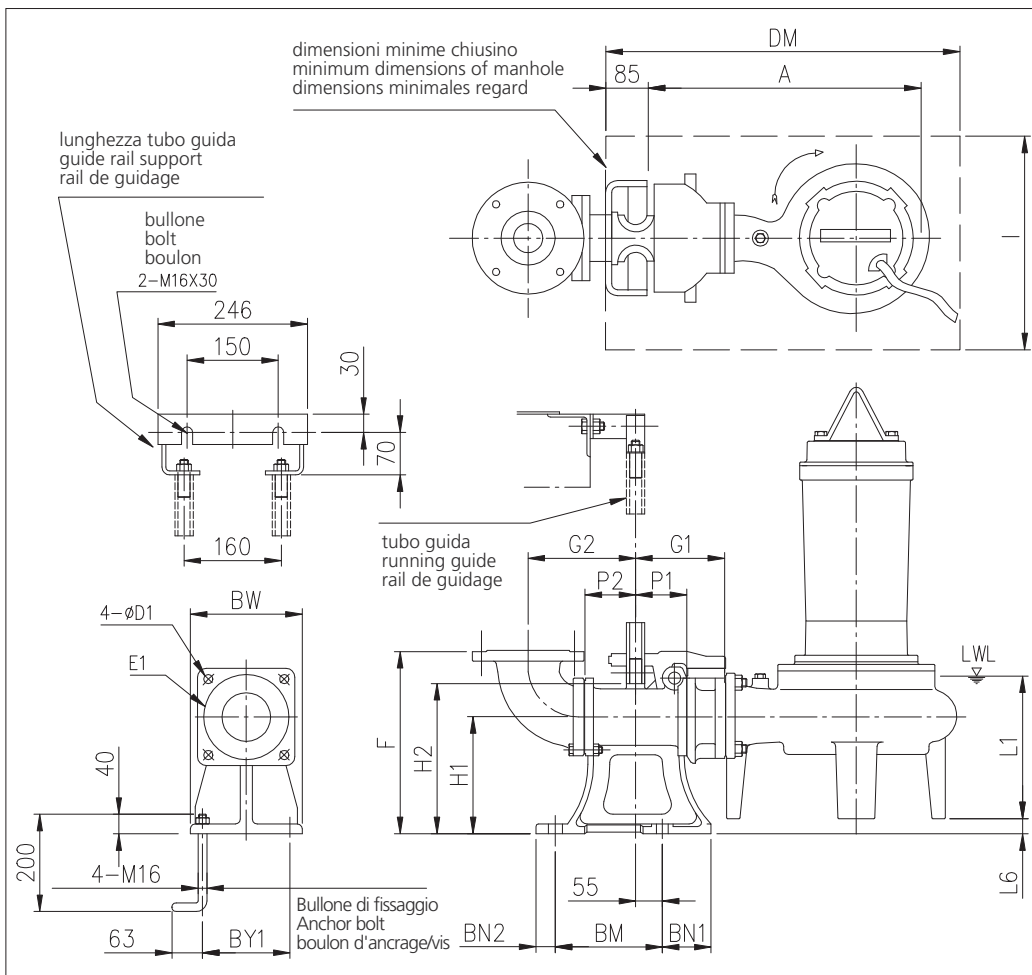
Tensione Power Tension	380-415V ±10% 50 Hz Y/Δ	Cavo Cable Câble	10 m
Avviamento ora Starts per hour Nombre de démarrages par huere	7	P ₂	11 kW
Classe di isolamento Insulation class Classe d'isolation	F	Voltaggio Start Current Ampérage au démarrage	380 V 400 V 415 V
Grado di protezione Protection degree Indice de protection	IP 68	Corrente di avviamento Current 100% Ampérage 100%	128,2 A 136 A 148,9 A
		Velocità di rotazione (rpm) Rotation speed (rpm) Vitesse de rotation (rpm)	23,5 A 23,8 A 23,8 A
			1450



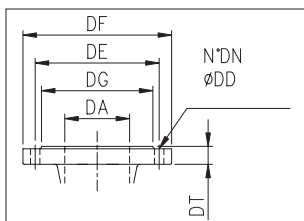
DIMENSIONI • DIMENSIONS • DIMENSIONS



Mod.	Dim. [mm]												[kg]
	DA	kW	A	B	C	D	E	F	H	J	L1	L2	
100DML511	100	11	751	455	530	221	420	355	938	315	329	778	160,0



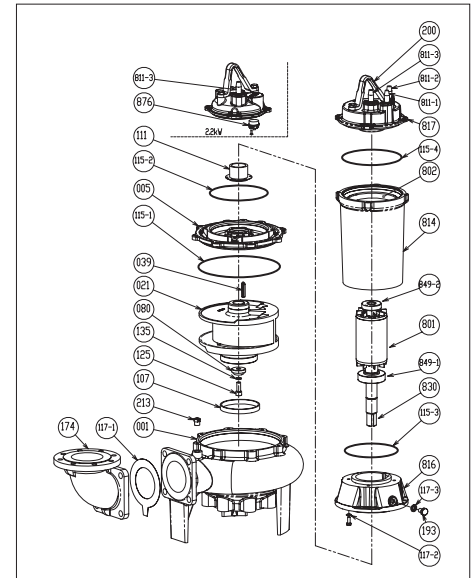
Mod.	Dim. [mm]																	Piede di accopp. Coupling foot Pied d'accoupl.	[kg]		
	A	P1	P2	G1	G2	F	H1	H2	L1	L6	BN1	BN2	BM	BY1	BW	DM	I			D1	E1
100DML511	721	105	105	185	210	370	240	265	329	15	100	40	220	180	230	1000	700	19	175	LL100	46,0



**DIMENSIONI FLANGE
DIMENSIONS FLANGES
DIMENSIONS BRIDES**

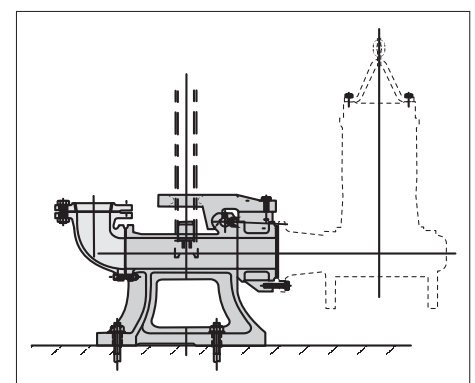
DA	DG	DE	Dim. DF	DT	N° DN	DD
100	158	180	220	24	8	18

RICAMBI • REPLACEMENT PARTS • PIÈCES DE RECHANGE



21	Girante - Impeller - Roue
039	Linguetta - Key - Languette
080	Bussola - Bushing - Bague d'usure
107	Anello di rasamento - Wear ring - Anneau arasement
111	Tenuta meccanica - Mechanical seal - Garniture mécanique
115-1	Anello OR - O-ring - Bague OR
115-2	Anello OR - O-ring - Bague OR
115-3	Anello OR - O-ring - Bague OR
115-4	Anello OR - O-ring - Bague OR
117-1	Guarnizione - Gasket - Joint
117-2	Guarnizione - Gasket - Joint
120-6	Vite - Screw - Vis
120-7	Vite - Screw - Vis
135	Rondella - Washer - Rondelle d'étanchiété
135-1	Rondella - Washer - Rondelle d'étanchiété
135-2	Dado - Nut - Écrou
174	Raccordo mandata - Discharge bend - raccord refoulement
275	Vite - Screw - Vis
811-1	Cavo - Cable - Câble
811-1	Cavo - Cable - Câble
811-2	Cavo segnale - Cable signal - Câble de signalisation
849-1	Cuscinetto - Bearing - Coussinet
849-2	Cuscinetto - Bearing - Coussinet

**MODELLO KIT SCIVOLO DISCESA (QDC)
QDC MODEL
MODÈLE KIT PIED D'ASSISE (QDC)
LL100**



GIRANTE MONOCANALE SINGLE-CHANNEL IMPELLER ROUE MONOCANAL

CURVE DI PRESTAZIONE • PERFORMANCE CURVES • COURBES DE PERFORMANCE

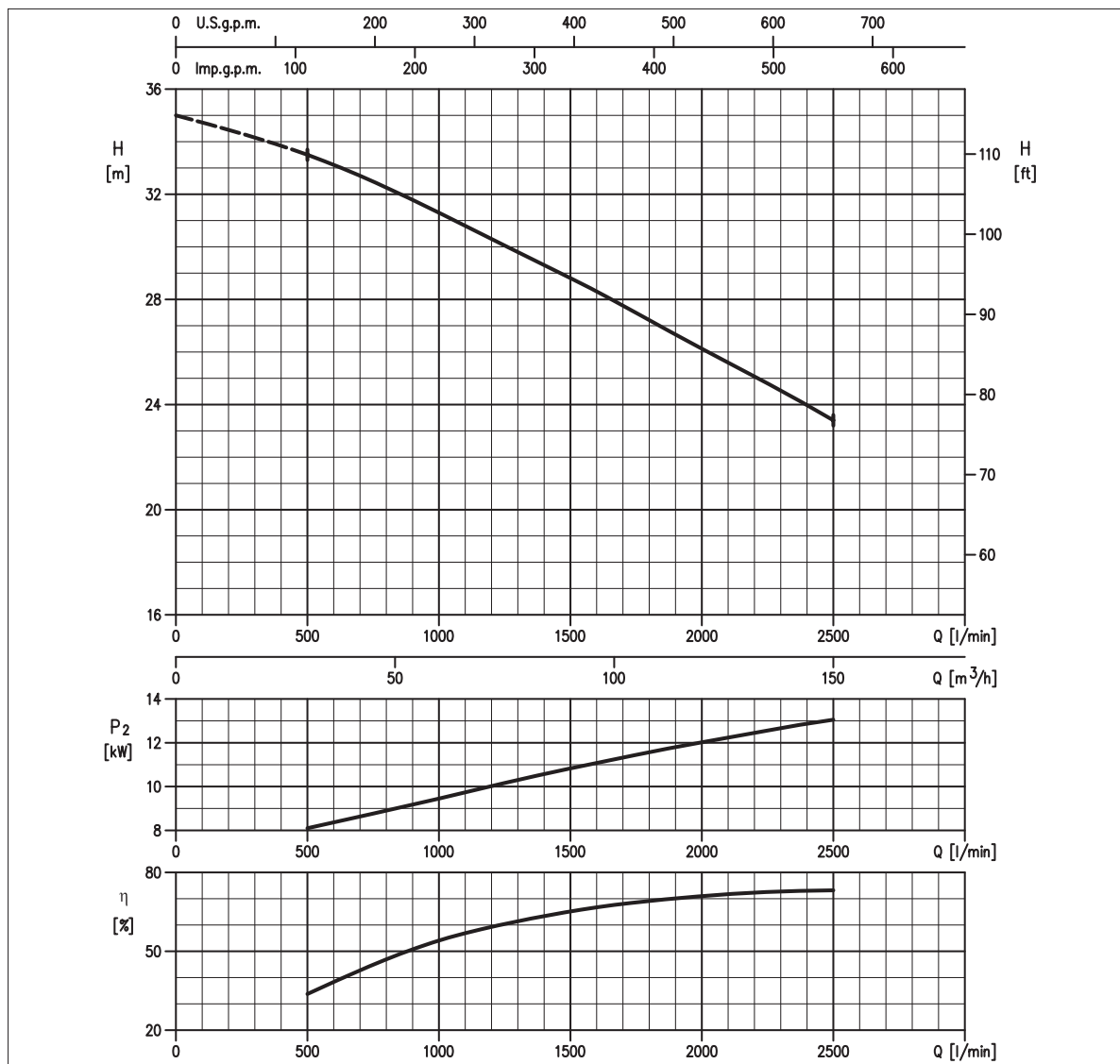


TABELLA PRESTAZIONI • PERFORMANCE TABLE • TABLEAU DE PERFORMANCES

Modello Model Modèle	P ₂		Q = Portata / Flow rate / Débit								
	[HP]	[kW]	l/min m³/h	500 30	1000 60	1300 78	1600 96	1900 114	2200 132	2400 144	2500 150
100DML515	20	15		33,5	31,3	29,8	28,3	26,7	25,1	24,0	23,4

H = Prevalenza / Head / Hauteur manométrique totale [m]

IDRAULICA • HYDRAULIC • HYDRAULIQUE

Girante Impeller Roue	MONOCANALE SINGLE-CHANNEL MONOCANAL
Mandata Flanges Brides	DN 100 mm
Massimo diametro passaggi liberi Maximum solid diameter Passage libre maximum	76 mm
Temperatura massima del liquido Maximum liquid temperature Température maximale du liquide	40°C
Doppia tenuta meccanica Double mechanical seal Double garniture mécanique	SiC/SiC/NBR Cer/Carb/NBR

TIPO POMPA • PUMP TYPE • TYPE DE POMPE

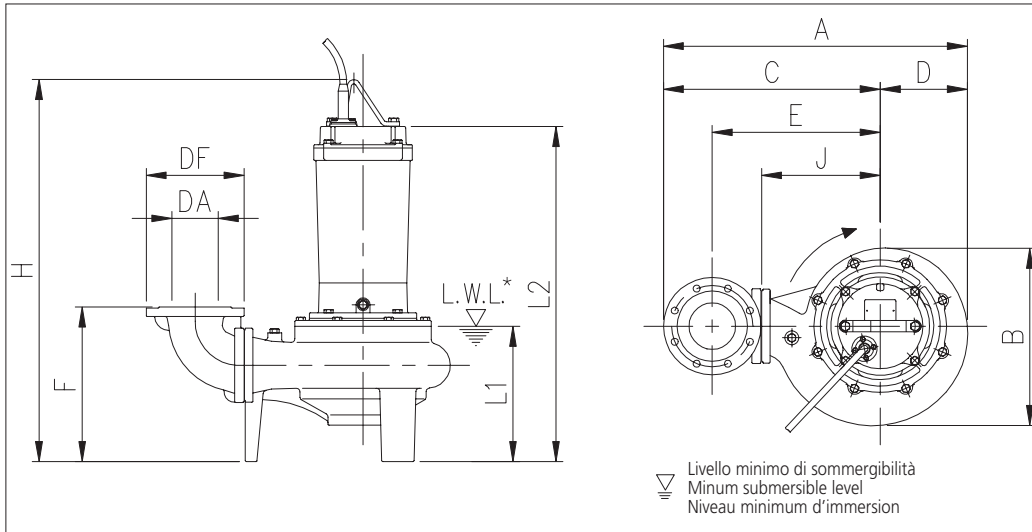
Peso Weight Poids	166 kg	Costruzione Construction Construction	GHISA CAST IRON FONTE
-------------------------	---------------	---	--------------------------------------

MOTORE • MOTOR • MOTEUR

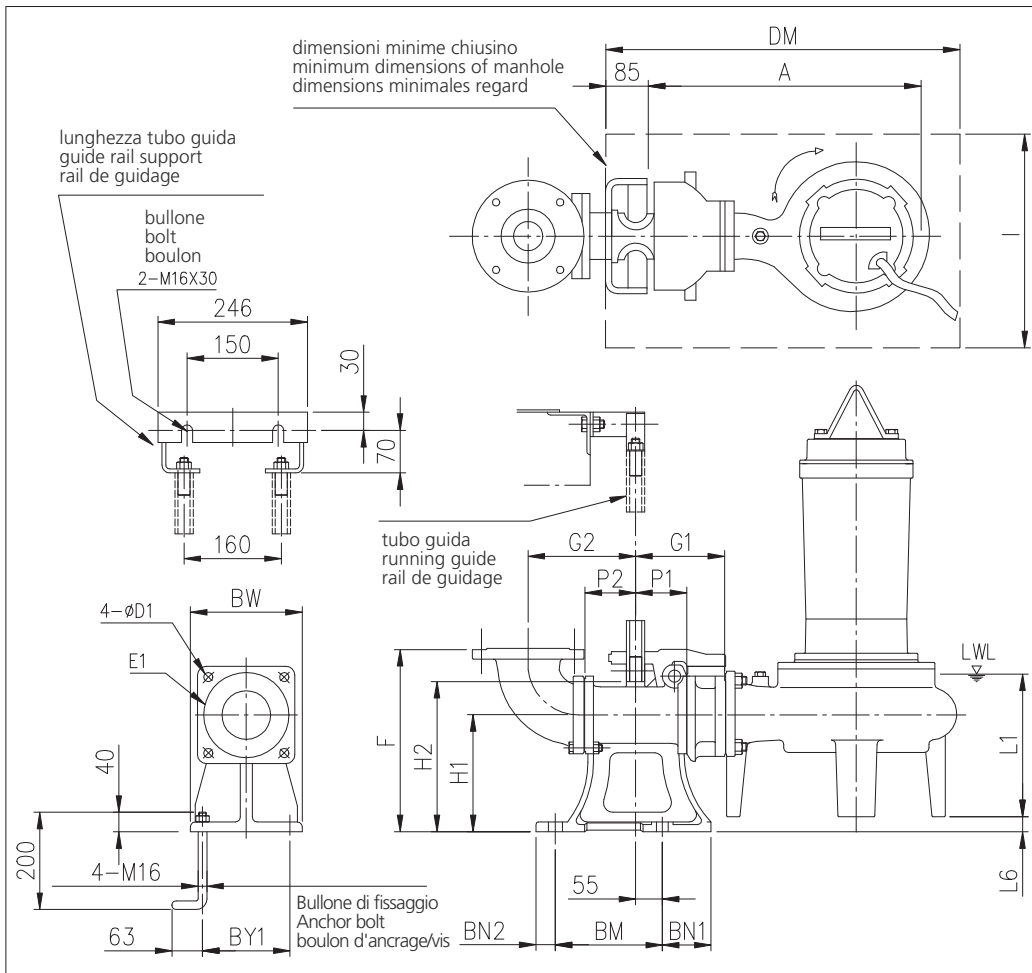
Tensione Power Tension	380-415V ±10% 50 Hz Y/Δ	Cavo Cable Câble	10 m
Avviamento ora Starts per hour Nombre de démarrages par huere	7	P ₂	15 kW
Classe di isolamento Insulation class Classe d'isolation	F	Voltaggio Start Current Ampérage au démarrage	380 V 400 V 415 V
Grado di protezione Protection degree Indice de protection	IP 68	Corrente di avviamento Start Current Ampérage au démarrage	199,8 A 211,9 A 220,9 A
		Corrente 100% Current 100% Ampérage 100%	31,5 A 31 A 31 A
		Velocità di rotazione (rpm) Rotation speed (rpm) Vitesse de rotation (rpm)	1450



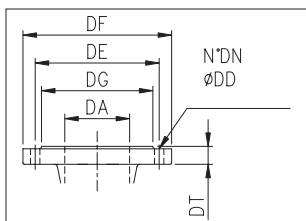
DIMENSIONI • DIMENSIONS • DIMENSIONS



Mod.	Dim. [mm]											[kg]	
	DA	kW	A	B	C	D	E	F	H	J	L1		L2
100DML515	100	15	751	455	530	221	420	355	938	315	329	778	166,0



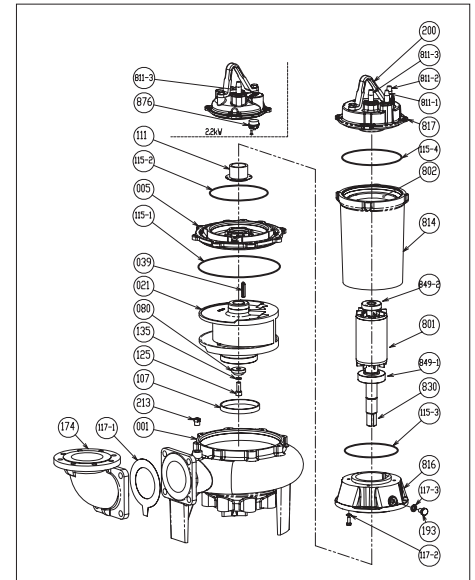
Mod.	Dim. [mm]																	Piede di accopp. Coupling foot Pied d'accoupl.	[kg]		
	A	P1	P2	G1	G2	F	H1	H2	L1	L6	BN1	BN2	BM	BY1	BW	DM	I			D1	E1
100DML515	721	105	105	185	210	370	240	265	329	15	100	40	220	180	230	1000	700	19	175	LL100	46,0



**DIMENSIONI FLANGE
DIMENSIONS FLANGES
DIMENSIONS BRIDES**

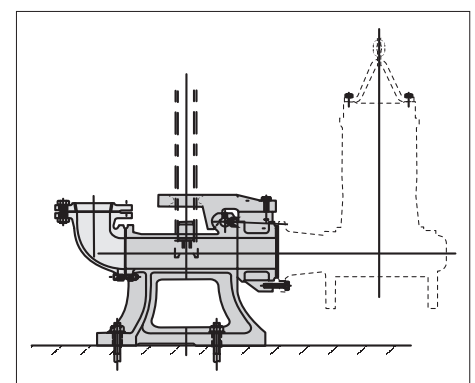
DA	DG	DE	Dim. DF	DT	N° DN	DD
100	158	180	220	24	8	18

RICAMBI • REPLACEMENT PARTS • PIÈCES DE RECHANGE



21	Girante - Impeller - Roue
039	Linguetta - Key - Languette
080	Bussola - Bushing - Bague d'usure
107	Anello di rasamento - Wear ring - Anneau arasement
111	Tenuta meccanica - Mechanical seal - Garniture mécanique
115-1	Anello OR - O-ring - Bague OR
115-2	Anello OR - O-ring - Bague OR
115-3	Anello OR - O-ring - Bague OR
115-4	Anello OR - O-ring - Bague OR
117-1	Guarnizione - Gasket - Joint
117-2	Guarnizione - Gasket - Joint
120-6	Vite - Screw - Vis
120-7	Vite - Screw - Vis
135	Rondella - Washer - Rondelle d'étanchiété
135-1	Rondella - Washer - Rondelle d'étanchiété
135-2	Dado - Nut - Écrou
174	Raccordo mandata - Discharge bend - raccord refoulement
275	Vite - Screw - Vis
811-1	Cavo - Cable - Câble
811-1	Cavo - Cable - Câble
811-2	Cavo segnale - Cable signal - Câble de signalisation
849-1	Cuscinetto - Bearing - Coussinet
849-2	Cuscinetto - Bearing - Coussinet

**MODELLO KIT SCIVOLO DISCESA (QDC)
QDC MODEL
MODÈLE KIT PIED D'ASSISE (QDC)
LL100**



GIRANTE MONOCANALE SINGLE-CHANNEL IMPELLER ROUE MONOCANAL

CURVE DI PRESTAZIONE • PERFORMANCE CURVES • COURBES DE PERFORMANCE

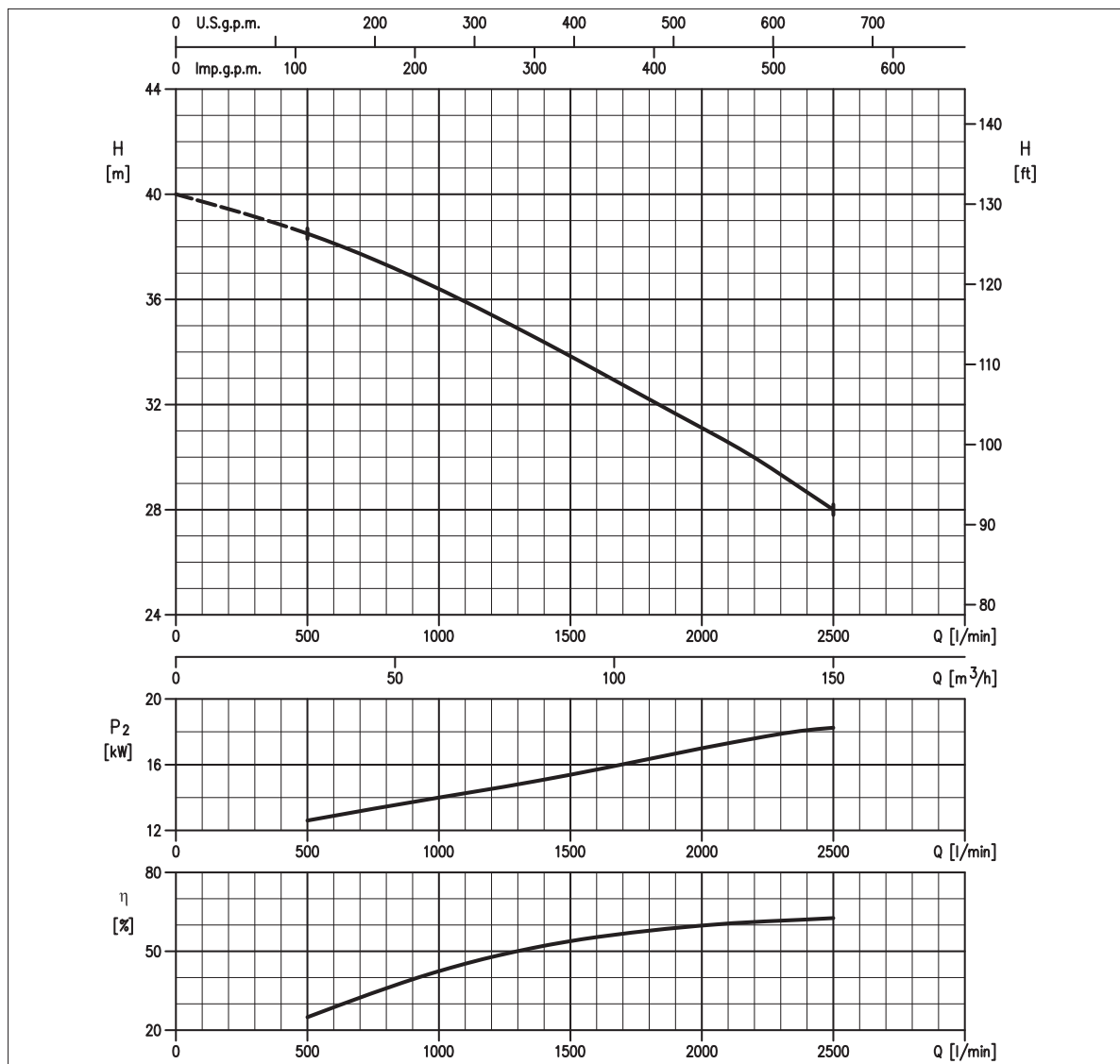


TABELLA PRESTAZIONI • PERFORMANCE TABLE • TABLEAU DE PERFORMANCES

Modello Model Modèle	P ₂		Q = Portata / Flow rate / Débit								
	[HP]	[kW]	l/min m³/h	500 30	1000 60	1300 78	1600 96	1900 114	2200 132	2400 144	2500 150
100DML522	30	22		38,5	36,4	34,9	33,3	31,7	30,0	28,7	28,0

H = Prevalenza / Head / Hauteur manométrique totale [m]

IDRAULICA • HYDRAULIC • HYDRAULIQUE

Girante Impeller Roue	MONOCANALE SINGLE-CHANNEL MONOCANAL
Mandata Flanges Brides	DN 100 mm
Massimo diametro passaggi liberi Maximum solid diameter Passage libre maximum	76 mm
Temperatura massima del liquido Maximum liquid temperature Température maximale du liquide	40°C
Doppia tenuta meccanica Double mechanical seal Double garniture mécanique	SiC/SiC/NBR Cer/Carb/NBR

TIPO POMPA • PUMP TYPE • TYPE DE POMPE

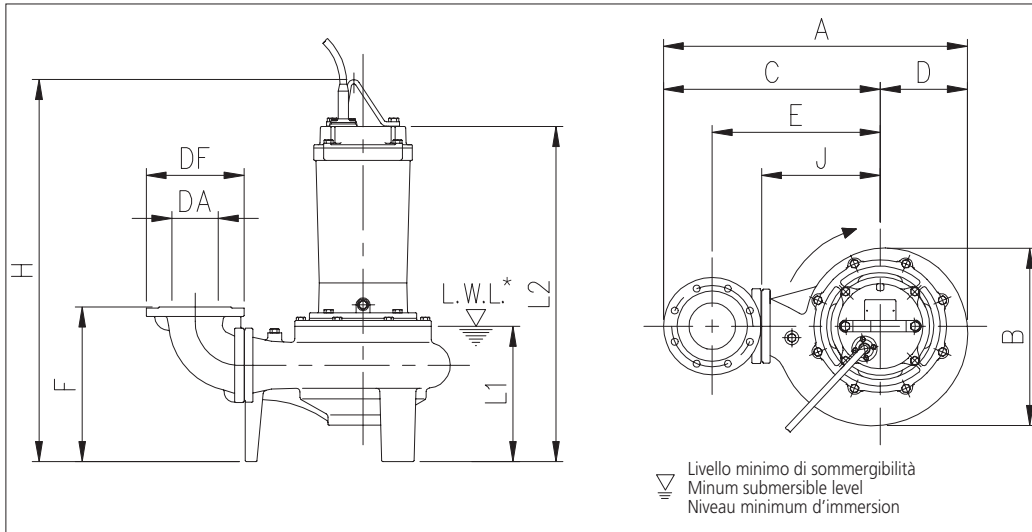
Peso Weight Poids	226 kg	Costruzione Construction Construction	GHISA CAST IRON FONTE
-------------------------	---------------	---	--------------------------------------

MOTORE • MOTOR • MOTEUR

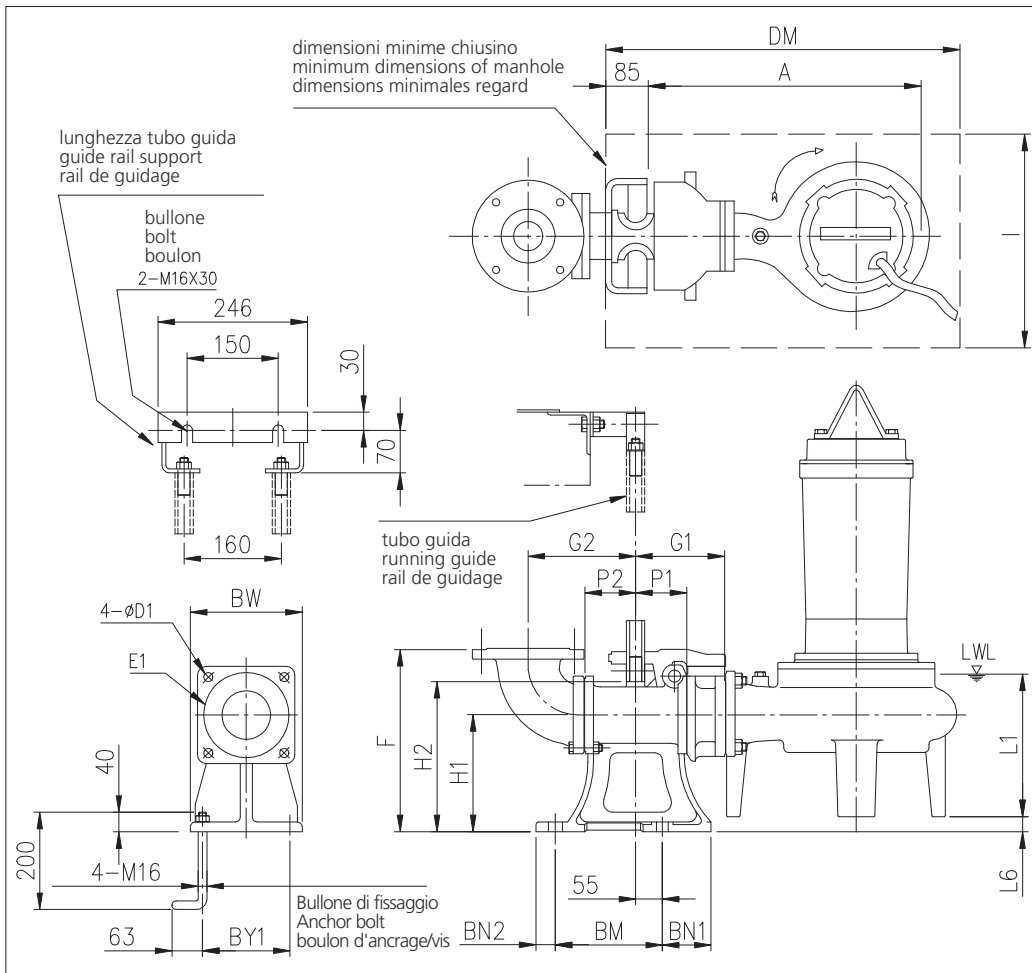
Tensione Power Tension	380-415V ±10% 50 Hz Y/Δ	Cavo Cable Câble	10 m
Avviamento ora Starts per hour Nombre de démarrages par huere	7	P ₂	22 kW
Classe di isolamento Insulation class Classe d'isolation	F	Voltaggio	380 V 400 V 415 V
Grado di protezione Protection degree Indice de protection	IP 68	Corrente di avviamento Start Current Ampérage au démarrage	299,8 A 318,5 A 332,7 A
		Corrente 100% Current 100% Ampérage 100%	43,5 A 42 A 42 A
		Velocità di rotazione (rpm) Rotation speed (rpm) Vitesse de rotation (rpm)	1450



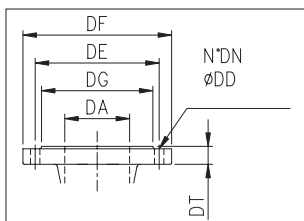
DIMENSIONI • DIMENSIONS • DIMENSIONS



Mod.	Dim. [mm]												[kg]
	DA	kW	A	B	C	D	E	F	H	J	L1	L2	
100DML522	100	22	795	497	550	245	440	358	1021	335	342	841	226,0



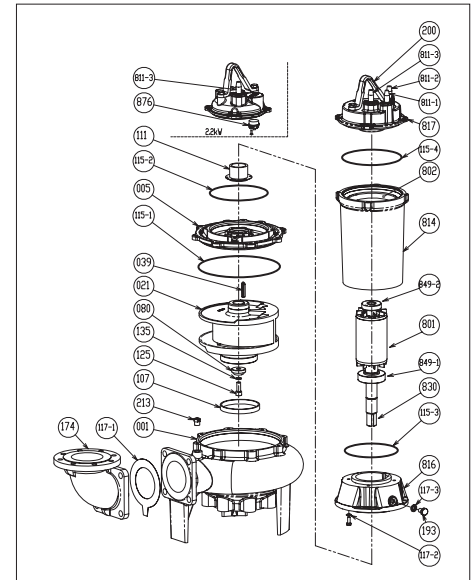
Mod.	Dim. [mm]																	Piede di accopp. Coupling foot Pied d'accoupl.	[kg]		
	A	P1	P2	G1	G2	F	H1	H2	L1	L6	BN1	BN2	BM	BY1	BW	DM	I			D1	E1
100DML522	765	105	105	185	210	370	240	265	342	12	100	40	220	180	230	1000	700	19	175	LL100	46,0



**DIMENSIONI FLANGE
DIMENSIONS FLANGES
DIMENSIONS BRIDES**

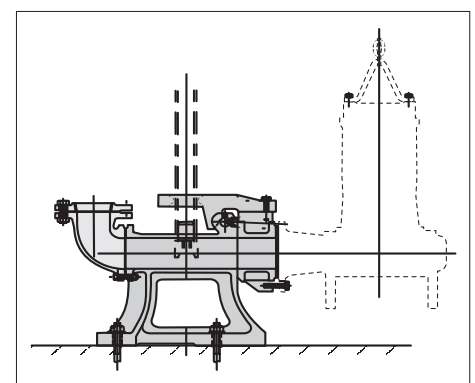
DA	DG	DE	Dim. DF	DT	N° DN	DD
100	158	180	220	24	8	18

RICAMBI • REPLACEMENT PARTS • PIÈCES DE RECHANGE



21	Girante - Impeller - Roue
039	Linguetta - Key - Languette
080	Bussola - Bushing - Bague d'usure
107	Anello di rasamento - Wear ring - Anneau arasement
111	Tenuta meccanica - Mechanical seal - Garniture mécanique
115-1	Anello OR - O-ring - Bague OR
115-2	Anello OR - O-ring - Bague OR
115-3	Anello OR - O-ring - Bague OR
115-4	Anello OR - O-ring - Bague OR
117-1	Guarnizione - Gasket - Joint
117-2	Guarnizione - Gasket - Joint
120-6	Vite - Screw - Vis
120-7	Vite - Screw - Vis
135	Rondella - Washer - Rondelle d'étanchiété
135-1	Rondella - Washer - Rondelle d'étanchiété
135-2	Dado - Nut - Écrou
174	Raccordo mandata - Discharge bend - raccord refoulement
275	Vite - Screw - Vis
811-1	Cavo - Cable - Câble
811-1	Cavo - Cable - Câble
811-2	Cavo segnale - Cable signal - Câble de signalisation
849-1	Cuscinetto - Bearing - Coussinet
849-2	Cuscinetto - Bearing - Coussinet

**MODELLO KIT SCIVOLO DISCESA (QDC)
QDC MODEL
MODÈLE KIT PIED D'ASSISE (QDC)
LL100**



GIRANTE MONOCANALE SINGLE-CHANNEL IMPELLER ROUE MONOCANAL

CURVE DI PRESTAZIONE • PERFORMANCE CURVES • COURBES DE PERFORMANCE

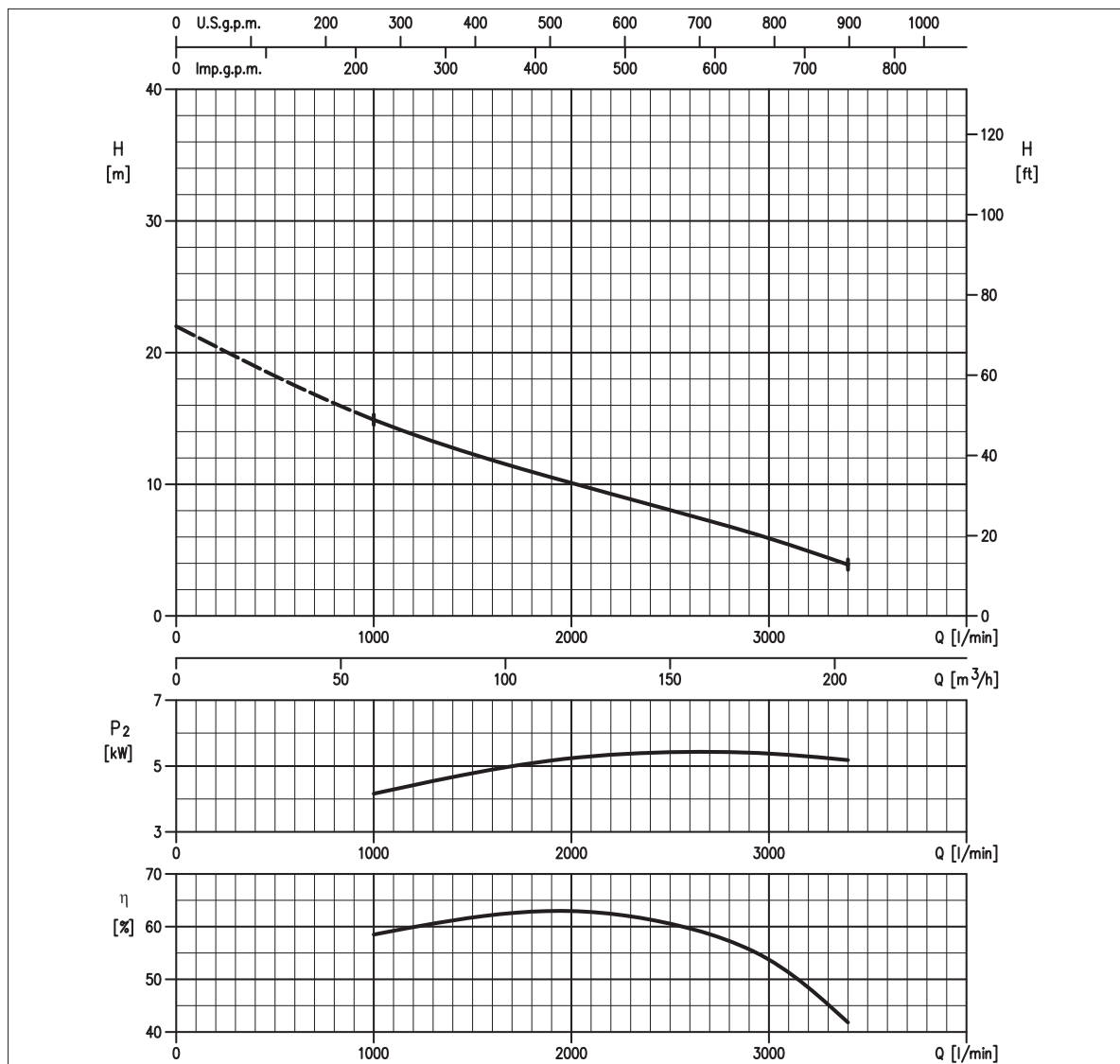


TABELLA PRESTAZIONI • PERFORMANCE TABLE • TABLEAU DE PERFORMANCES

Modello Model Modèle	P ₂		Q = Portata / Flow rate / Débit									
	[HP]	[kW]	l/min m ³ /h	1000 60	2000 120	2500 150	3000 180	3400 204	4000 240	4500 270	5000 300	5500 330
150DML55.5	7,5	5,5		14,9	10,1	8,0	5,9	3,9	-	-	-	-

H = Prevalenza / Head / Hauteur manométrique totale [m]

IDRAULICA • HYDRAULIC • HYDRAULIQUE

Girante Impeller Roue	MONOCANALE SINGLE-CHANNEL MONOCANAL
Mandata Flanges Brides	DN 150 mm
Massimo diametro passaggi liberi Maximum solid diameter Passage libre maximum	76 mm
Temperatura massima del liquido Maximum liquid temperature Température maximale du liquide	40°C
Doppia tenuta meccanica Double mechanical seal Double garniture mécanique	SiC/SiC/NBR Cer/Carb/NBR

TIPO POMPA • PUMP TYPE • TYPE DE POMPE

Peso Weight Poids	127 kg	Costruzione Construction Construction	GHISA CAST IRON FONTE
-------------------------	---------------	---	--------------------------------------

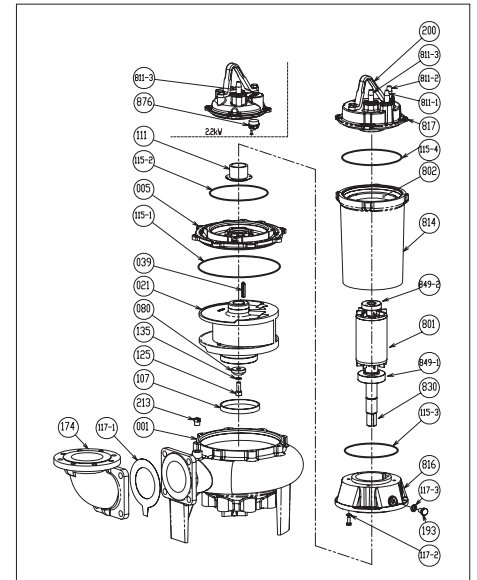
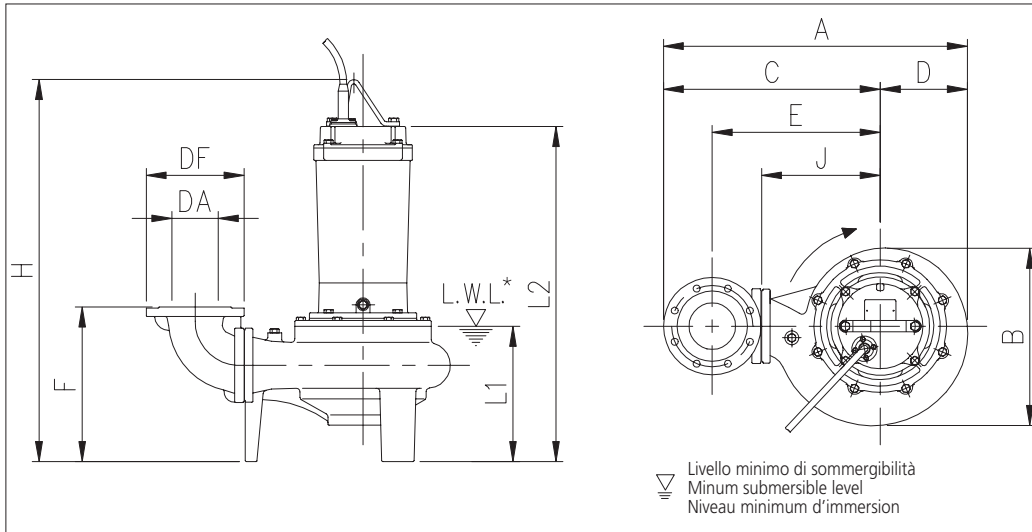
MOTORE • MOTOR • MOTEUR

Tensione Power Tension	380-415V ±10% 50 Hz Y/Δ	Cavo Cable Câble	10 m
Avviamento ora Starts per hour Nombre de démarrages par huere	10	P ₂	5.5 kW
Classe di isolamento Insulation class Classe d'isolation	F	Voltaggio Start Current Ampérage au démarrage	380 V 400 V 415 V
Grado di protezione Protection degree Indice de protection	IP 68	Corrente di avviamento Current 100% Ampérage 100%	78 A 82,6 A 87,8 A
		Velocità di rotazione (rpm) Rotation speed (rpm) Vitesse de rotation (rpm)	1450



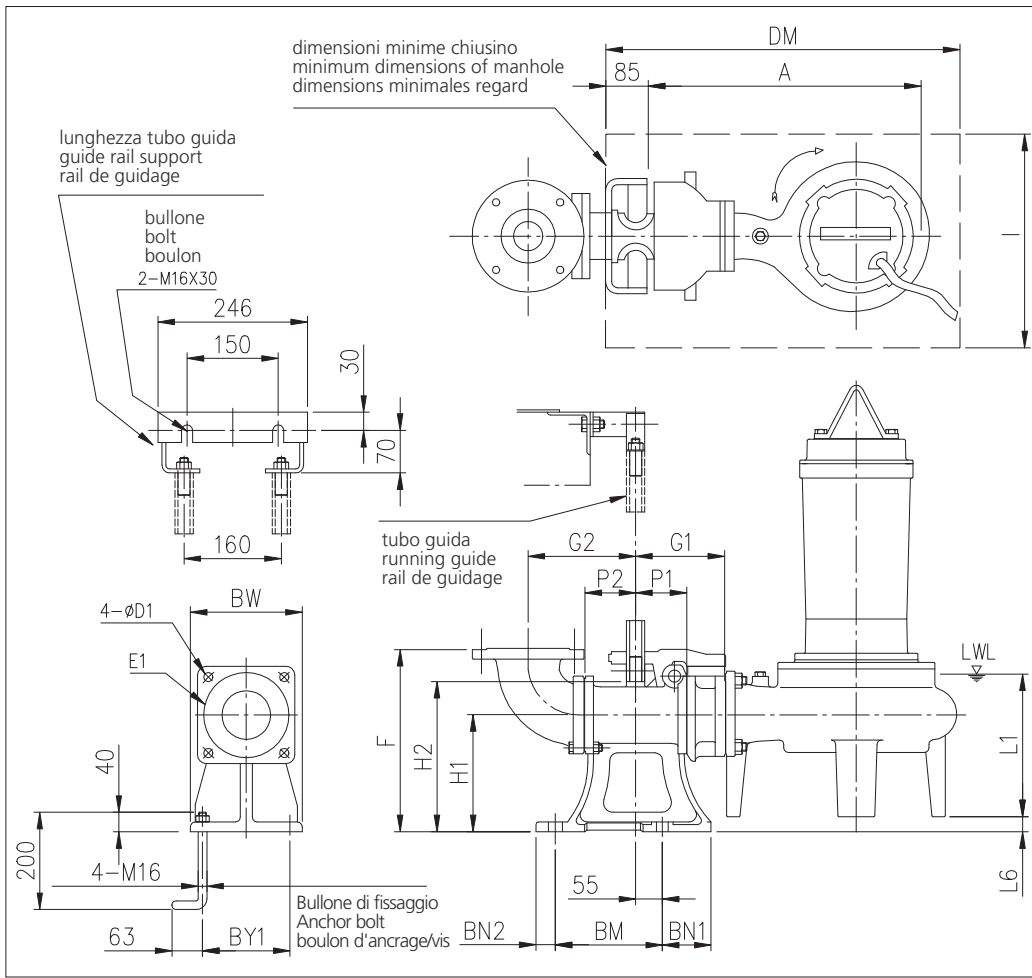
DIMENSIONI • DIMENSIONS • DIMENSIONS

RICAMBI • REPLACEMENT PARTS • PIÈCES DE RECHANGE



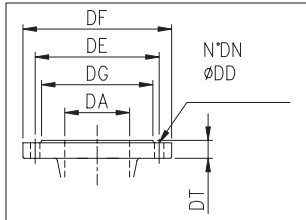
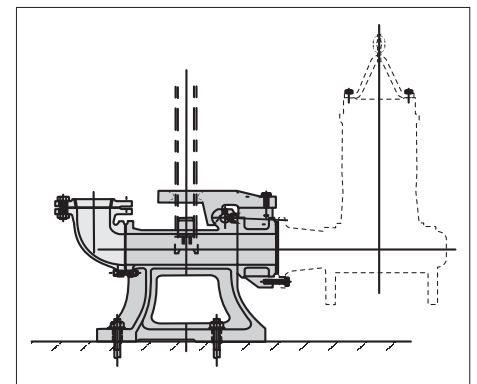
Mod.	Dim. [mm]												[kg]
	DA	kW	A	B	C	D	E	F	H	J	L1	L2	
150DML55.5	150	5,5	715,5	381	527,5	188	385	369	824	255	310	724	127,0

21	Girante - Impeller - Roue
039	Linguetta - Key - Languette
080	Bussola - Bushing - Bague d'usura
107	Anello di rasamento - Wear ring - Anneau arasement
111	Tenuta meccanica - Mechanical seal - Garniture mécanique
115-1	Anello OR - O-ring - Bague OR
115-2	Anello OR - O-ring - Bague OR
115-3	Anello OR - O-ring - Bague OR
115-4	Anello OR - O-ring - Bague OR
117-1	Guarnizione - Gasket - Joint
117-2	Guarnizione - Gasket - Joint
120-6	Vite - Screw - Vis
120-7	Vite - Screw - Vis
135	Rondella - Washer - Rondelle d'étanchiété
135-1	Rondella - Washer - Rondelle d'étanchiété
135-2	Dado - Nut - Écrou
174	Raccordo mandata - Discharge bend - raccord refoulement
275	Vite - Screw - Vis
811-1	Cavo - Cable - Câble
811-1	Cavo - Cable - Câble
811-2	Cavo segnale - Cable signal - Câble de signalisation
849-1	Cuscinetto - Bearing - Coussinet
849-2	Cuscinetto - Bearing - Coussinet



**MODELLO KIT SCIVOLO DISCESA (QDC)
QDC MODEL
MODÈLE KIT PIED D'ASSISE (QDC)
LL100**

Mod.	Dim. [mm]																Piede di accopp. Coupling foot Pied d'accoupl.	[kg]			
	A	P1	P2	G1	G2	F	H1	H2	L1	L6	BN1	BN2	BM	BY1	BW	DM			I	D1	E1
150DML55.5	628	105	105	185	235	400	240	265	310	31	100	40	220	180	230	800	700	19	175	LL100	46,0



**DIMENSIONI FLANGE
DIMENSIONS FLANGES
DIMENSIONS BRIDES**

DA	DG	DE	Dim. DF	DT	N° DN	DD
150	212	240	285	26	8	22

GIRANTE MONOCANALE SINGLE-CHANNEL IMPELLER ROUE MONOCANAL

CURVE DI PRESTAZIONE • PERFORMANCE CURVES • COURBES DE PERFORMANCE

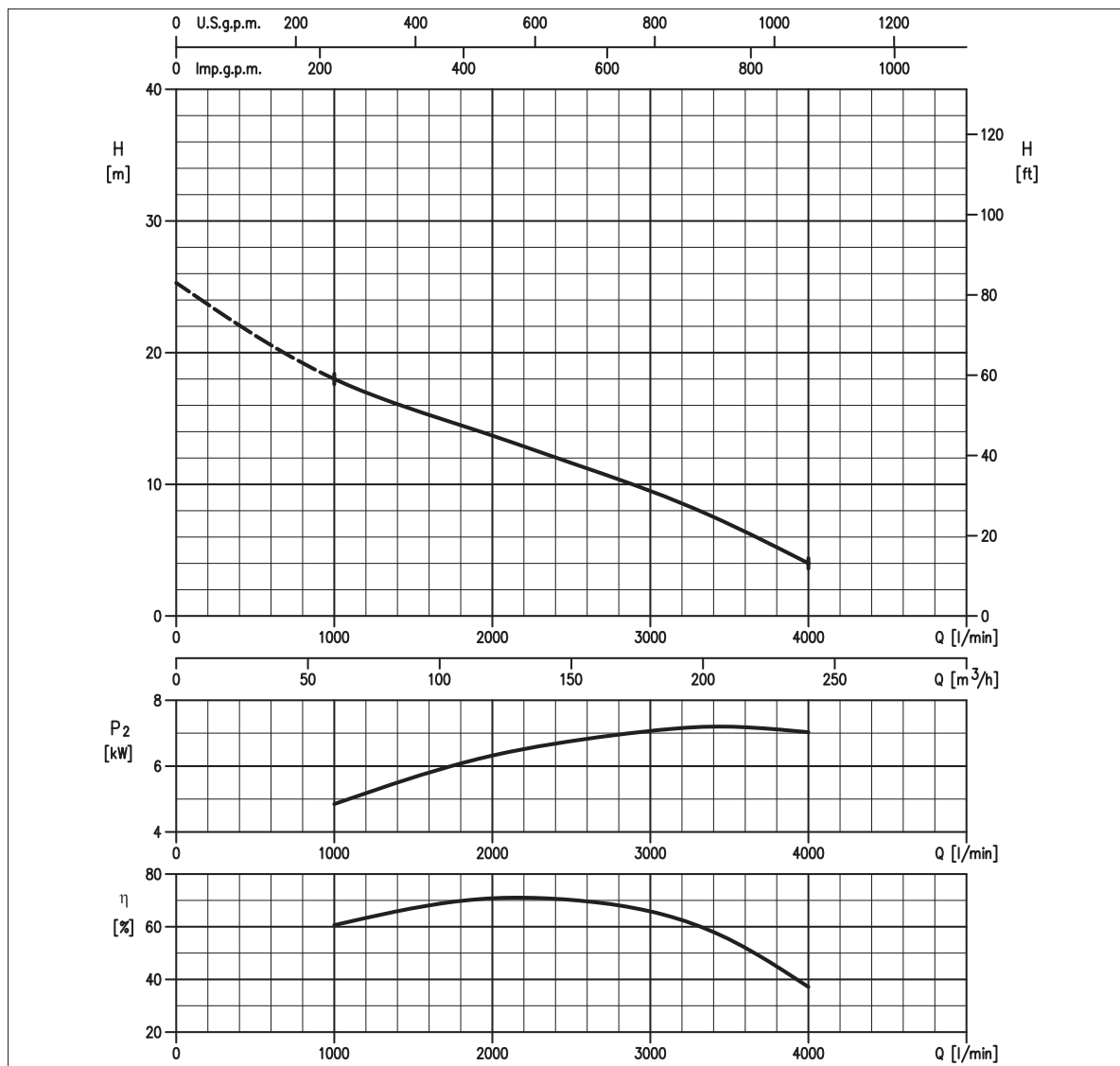


TABELLA PRESTAZIONI • PERFORMANCE TABLE • TABLEAU DE PERFORMANCES

Modello Model Modèle	P ₂		Q = Portata / Flow rate / Débit									
	[HP]	[kW]	l/min	1000	2000	2500	3000	3400	4000	4500	5000	5500
			m ³ /h	60	120	150	180	204	240	270	300	330
150DML57.5	10	7,5		18,0	13,7	11,6	9,5	7,5	4,0	-	-	-

H = Prevalenza / Head / Hauteur manométrique totale [m]

IDRAULICA • HYDRAULIC • HYDRAULIQUE

Girante Impeller Roue	MONOCANALE SINGLE-CHANNEL MONOCANAL
Mandata Flanges Brides	DN 150 mm
Massimo diametro passaggi liberi Maximum solid diameter Passage libre maximum	76 mm
Temperatura massima del liquido Maximum liquid temperature Température maximale du liquide	40°C
Doppia tenuta meccanica Double mechanical seal Double garniture mécanique	SiC/SiC/NBR Cer/Carb/NBR

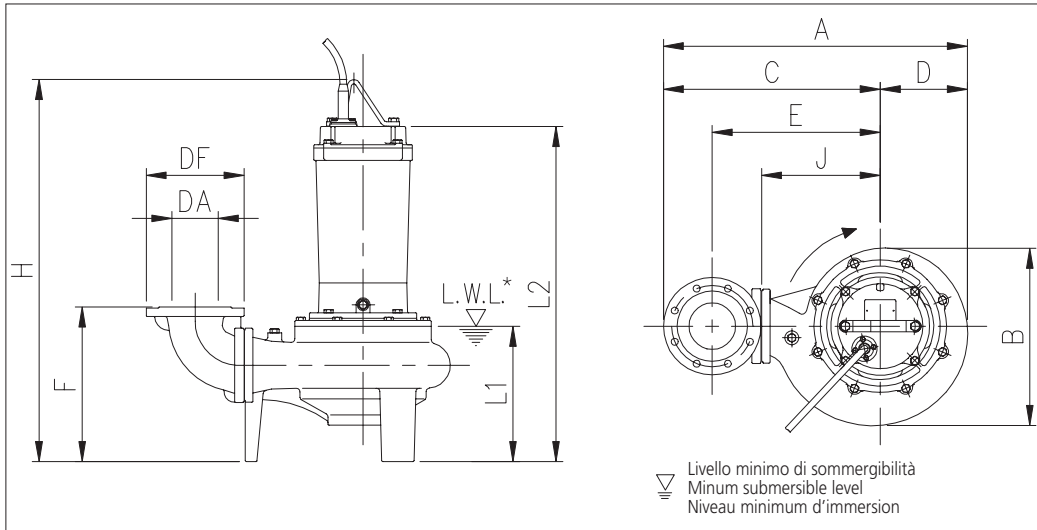
TIPO POMPA • PUMP TYPE • TYPE DE POMPE

Peso Weight Poids	132 kg	Costruzione Construction Construction	GHISA CAST IRON FONTE
-------------------------	---------------	---	--------------------------------------

MOTORE • MOTOR • MOTEUR

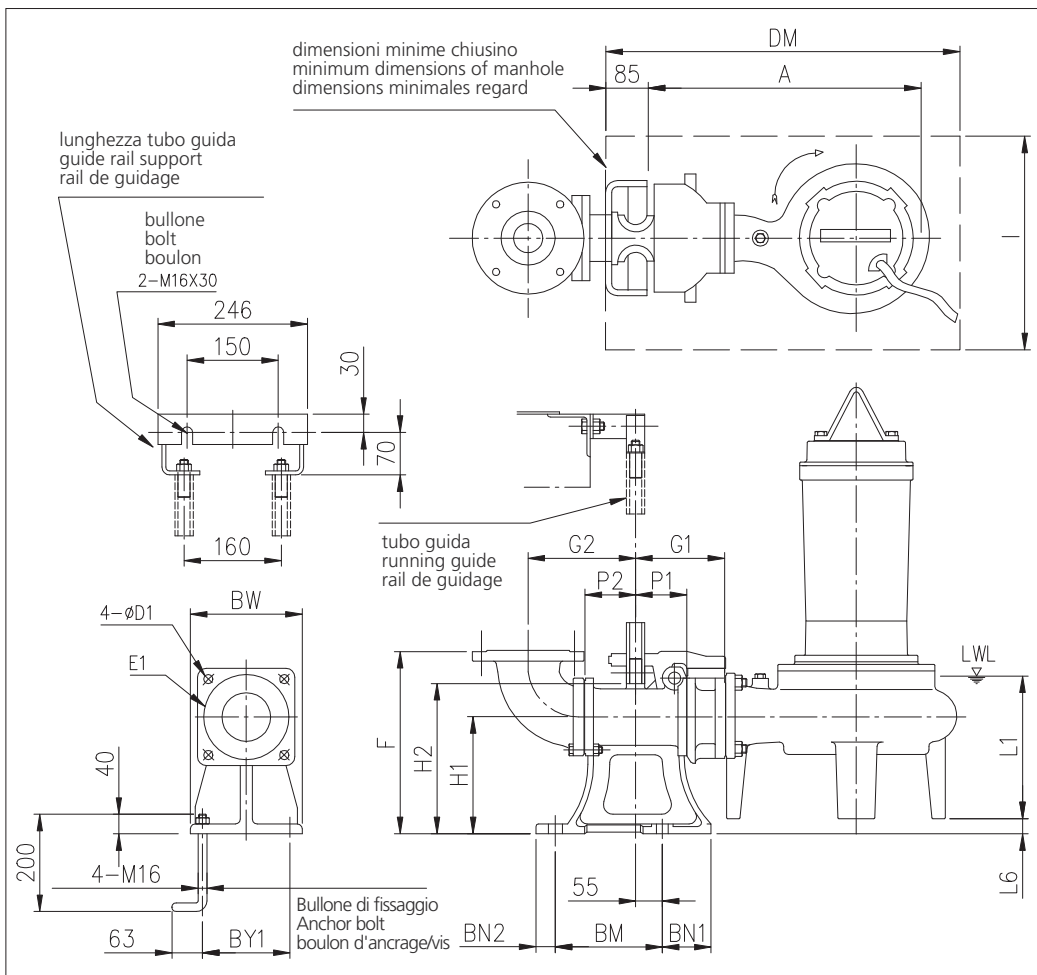
Tensione Power Tension	380-415V ±10% 50 Hz Y/Δ	Cavo Cable Câble	10 m
Avviamento ora Starts per hour Nombre de démarrages par huere	10	P ₂	7.5 kW
Classe di isolamento Insulation class Classe d'isolation	F	Voltaggio	380 V 400 V 415 V
Grado di protezione Protection degree Indice de protection	IP 68	Corrente di avviamento Start Current Ampérage au démarrage	110,2 A 116,5 A 121,7 A
		Corrente 100% Current 100% Ampérage 100%	16,9 A 16,9 A 17,1 A
		Velocità di rotazione (rpm) Rotation speed (rpm) Vitesse de rotation (rpm)	1450

DIMENSIONI • DIMENSIONS • DIMENSIONS

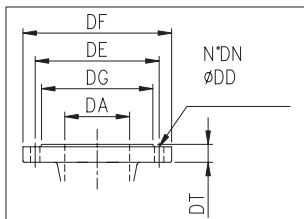


Livello minimo di sommersibilità
 Minum submersible level
 Niveau minimum d'immersion

Mod.	Dim. [mm]												[kg]
	DA	kW	A	B	C	D	E	F	H	J	L1	L2	
150DML57.5	150	7,5	715,5	381	527,5	188	385	369	824	255	310	724	132,0



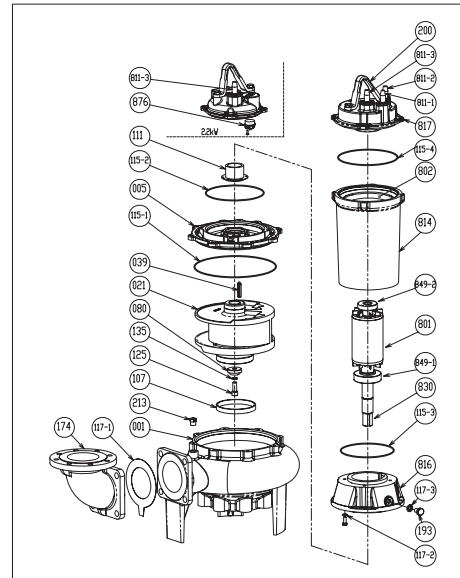
Mod.	Dim. [mm]																Piede di accopp. Coupling foot Pied d'accoupl.	[kg]			
	A	P1	P2	G1	G2	F	H1	H2	L1	L6	BN1	BN2	BM	BY1	BW	DM			I	D1	E1
150DML57.5	628	105	105	185	235	400	240	265	310	31	100	40	220	180	230	800	700	19	175	LL100	46,0



DIMENSIONI FLANGE DIMENSIONS FLANGES DIMENSIONS BRIDES

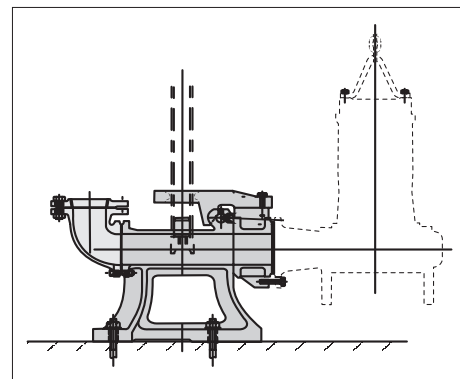
DA	DG	DE	Dim. DF	DT	N° DN	DD
150	212	240	285	26	8	22

RICAMBI • REPLACEMENT PARTS • PIÈCES DE RECHANGE



21	Girante - Impeller - Roue
039	Linguetta - Key - Languette
080	Bussola - Bushing - Bague d'usure
107	Anello di rasamento - Wear ring - Anneau arasement
111	Tenuta meccanica - Mechanical seal - Garniture mécanique
115-1	Anello OR - O-ring - Bague OR
115-2	Anello OR - O-ring - Bague OR
115-3	Anello OR - O-ring - Bague OR
115-4	Anello OR - O-ring - Bague OR
117-1	Guarnizione - Gasket - Joint
117-2	Guarnizione - Gasket - Joint
120-6	Vite - Screw - Vis
120-7	Vite - Screw - Vis
135	Rondella - Washer - Rondelle d'étanchiété
135-1	Rondella - Washer - Rondelle d'étanchiété
135-2	Dado - Nut - Écrou
174	Raccordo mandata - Discharge bend - raccord refoulement
275	Vite - Screw - Vis
811-1	Cavo - Cable - Câble
811-1	Cavo - Cable - Câble
811-2	Cavo segnale - Cable signal - Câble de signalisation
849-1	Cuscinetto - Bearing - Coussinet
849-2	Cuscinetto - Bearing - Coussinet

MODELLO KIT SCIVOLO DISCESA (QDC) QDC MODEL MODÈLE KIT PIED D'ASSISE (QDC) LL100



GIRANTE MONOCANALE SINGLE-CHANNEL IMPELLER ROUE MONOCANAL

CURVE DI PRESTAZIONE • PERFORMANCE CURVES • COURBES DE PERFORMANCE

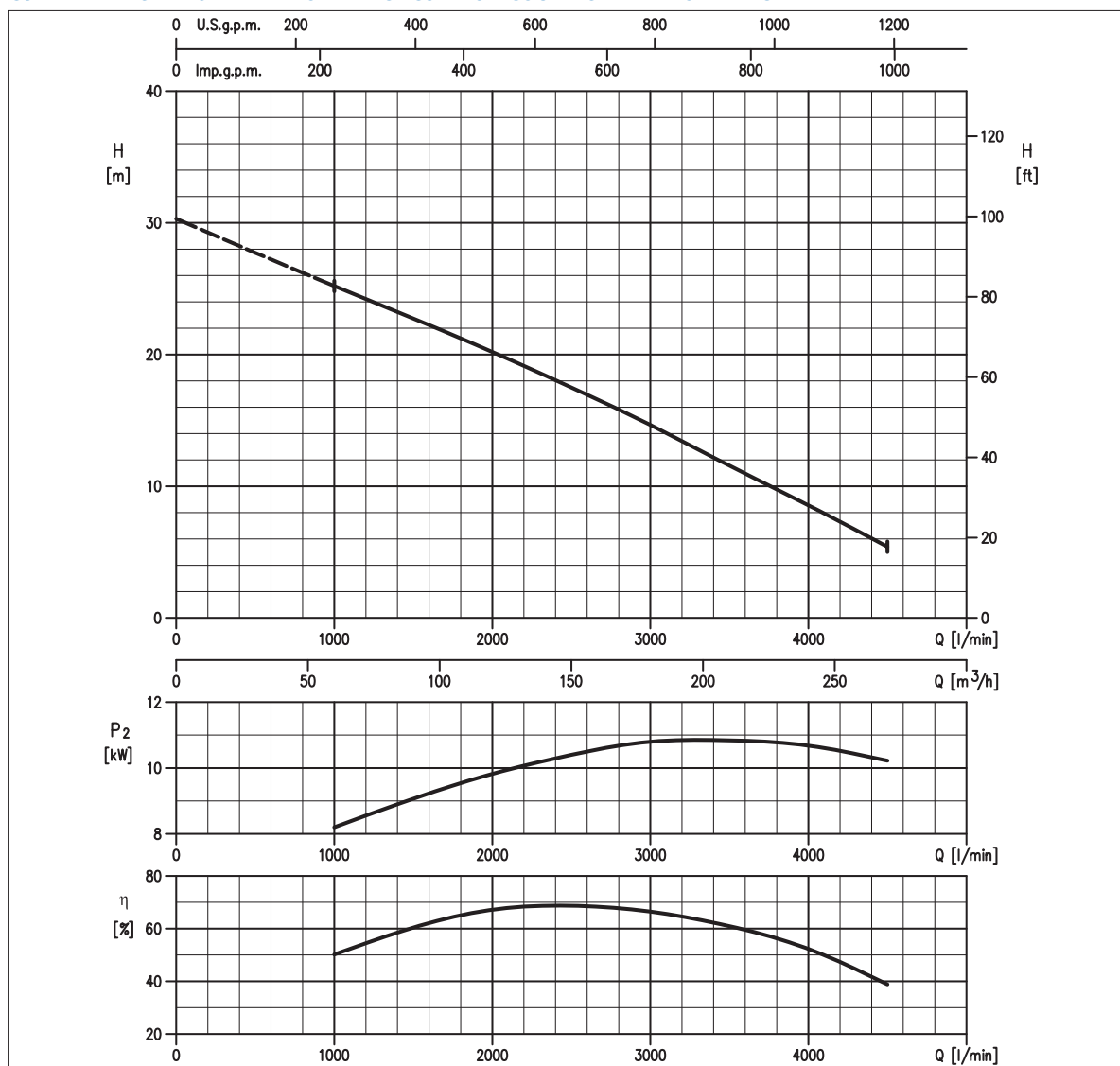


TABELLA PRESTAZIONI • PERFORMANCE TABLE • TABLEAU DE PERFORMANCES

Modello Model Modèle	P ₂		Q = Portata / Flow rate / Débit									
	[HP]	[kW]	l/min	1000	2000	2500	3000	3400	4000	4500	5000	5500
			m³/h	60	120	150	180	204	240	270	300	330
150DML511	15	11	H = Prevalenza / Head / Hauteur manometrique totale [m]									
			25,2	20,2	17,5	14,7	12,2	8,6	5,4	-	-	

IDRAULICA • HYDRAULIC • HYDRAULIQUE

Girante Impeller Roue	MONOCANALE SINGLE-CHANNEL MONOCANAL
Mandata Flanges Brides	DN 150 mm
Massimo diametro passaggi liberi Maximum solid diameter Passage libre maximum	76 mm
Temperatura massima del liquido Maximum liquid temperature Température maximale du liquide	40°C
Doppia tenuta meccanica Double mechanical seal Double garniture mécanique	SiC/SiC/NBR Cer/Carb/NBR

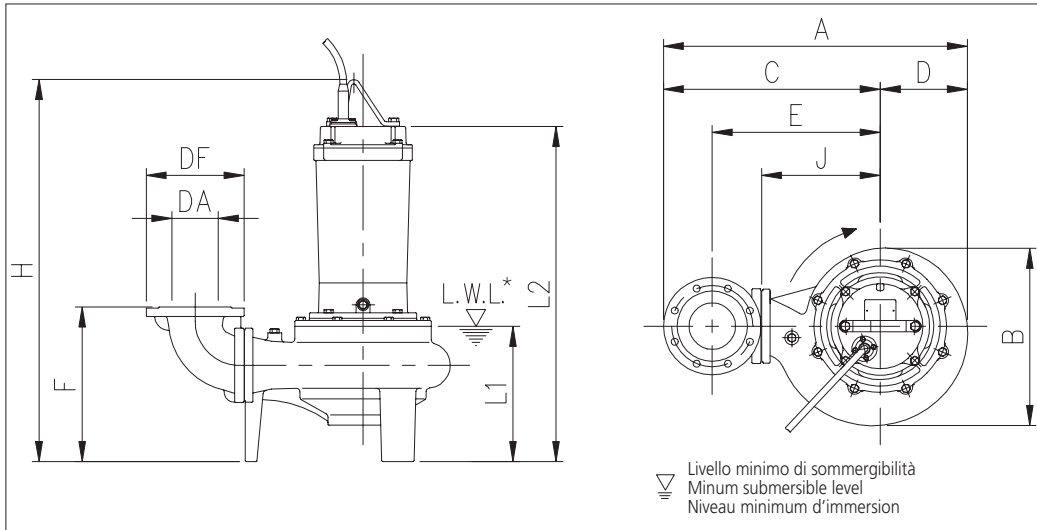
TIPO POMPA • PUMP TYPE • TYPE DE POMPE

Peso Weight Poids	166 kg	Costruzione Construction Construction	GHISA CAST IRON FONTE
-------------------------	---------------	---	--------------------------------------

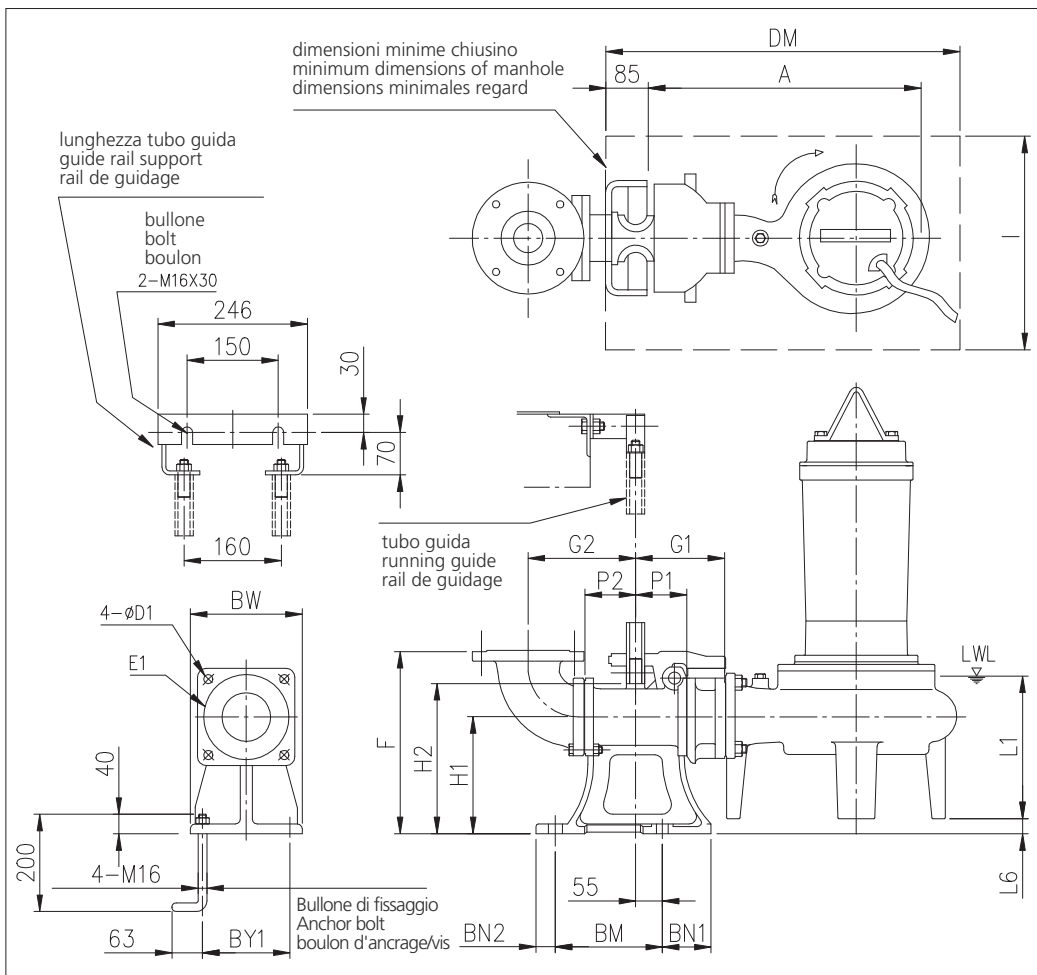
MOTORE • MOTOR • MOTEUR

Tensione Power Tension	380-415V ±10% 50 Hz Y/Δ	Cavo Cable Câble	10 m
Avviamento ora Starts per hour Nombre de démarrages par huere	7	P ₂	11 kW
Classe di isolamento Insulation class Classe d'isolation	F	Voltaggio Start Current Ampérage au démarrage	380 V 400 V 415 V
Grado di protezione Protection degree Indice de protection	IP 68	Corrente di avviamento Start Current Ampérage au démarrage	128,2 A 136 A 141,9 A
		Corrente 100% Current 100% Ampérage 100%	23,5 A 23,8 A 23,8 A
		Velocità di rotazione (rpm) Rotation speed (rpm) Vitesse de rotation (rpm)	1450

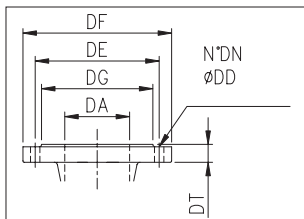
DIMENSIONI • DIMENSIONS • DIMENSIONS



Mod.	Dim. [mm]											[kg]	
	DA	kW	A	B	C	D	E	F	H	J	L1		L2
150DML511	150	11	808,5	455	587,5	221	445	385	938	315	329	778	166,0



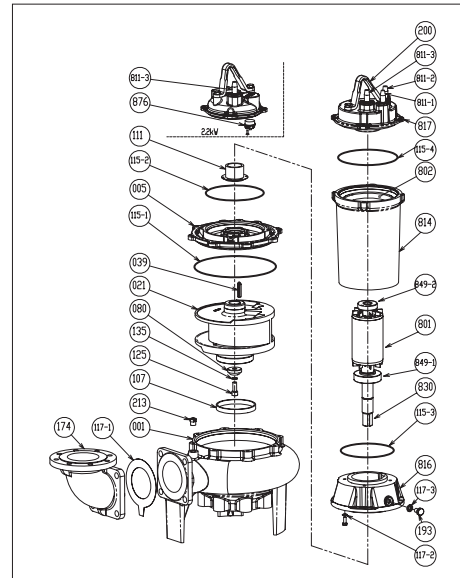
Mod.	Dim. [mm]																Piede di accopp. Coupling foot Pied d'accoupl.	[kg]			
	A	P1	P2	G1	G2	F	H1	H2	L1	L6	BN1	BN2	BM	BY1	BW	DM			I	D1	E1
150DML511	721	105	105	185	235	400	240	265	329	15	100	40	220	180	230	1000	700	19	175	LL100	46,0



DIMENSIONI FLANGE DIMENSIONS FLANGES DIMENSIONS BRIDES

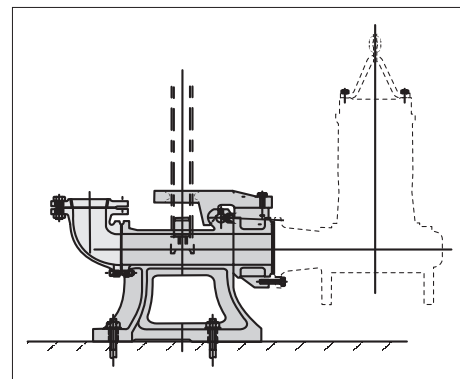
DA	DG	DE	Dim. DF	DT	N° DN	DD
150	212	240	285	26	8	22

RICAMBI • REPLACEMENT PARTS • PIÈCES DE RECHANGE



21	Girante - Impeller - Roue
039	Linguetta - Key - Languette
080	Bussola - Bushing - Bague d'usure
107	Anello di rasamento - Wear ring - Anneau arasement
111	Tenuta meccanica - Mechanical seal - Garniture mécanique
115-1	Anello OR - O-ring - Bague OR
115-2	Anello OR - O-ring - Bague OR
115-3	Anello OR - O-ring - Bague OR
115-4	Anello OR - O-ring - Bague OR
117-1	Guarnizione - Gasket - Joint
117-2	Guarnizione - Gasket - Joint
120-6	Vite - Screw - Vis
120-7	Vite - Screw - Vis
135	Rondella - Washer - Rondelle d'étanchiété
135-1	Rondella - Washer - Rondelle d'étanchiété
135-2	Dado - Nut - Écrou
174	Raccordo mandata - Discharge bend - raccord refoulement
275	Vite - Screw - Vis
811-1	Cavo - Cable - Câble
811-1	Cavo - Cable - Câble
811-2	Cavo segnale - Cable signal - Câble de signalisation
849-1	Cuscinetto - Bearing - Coussinet
849-2	Cuscinetto - Bearing - Coussinet

MODELLO KIT SCIVOLO DISCESA (QDC) QDC MODEL MODÈLE KIT PIED D'ASSISE (QDC) LL100



GIRANTE MONOCANALE SINGLE-CHANNEL IMPELLER ROUE MONOCANAL

CURVE DI PRESTAZIONE • PERFORMANCE CURVES • COURBES DE PERFORMANCE

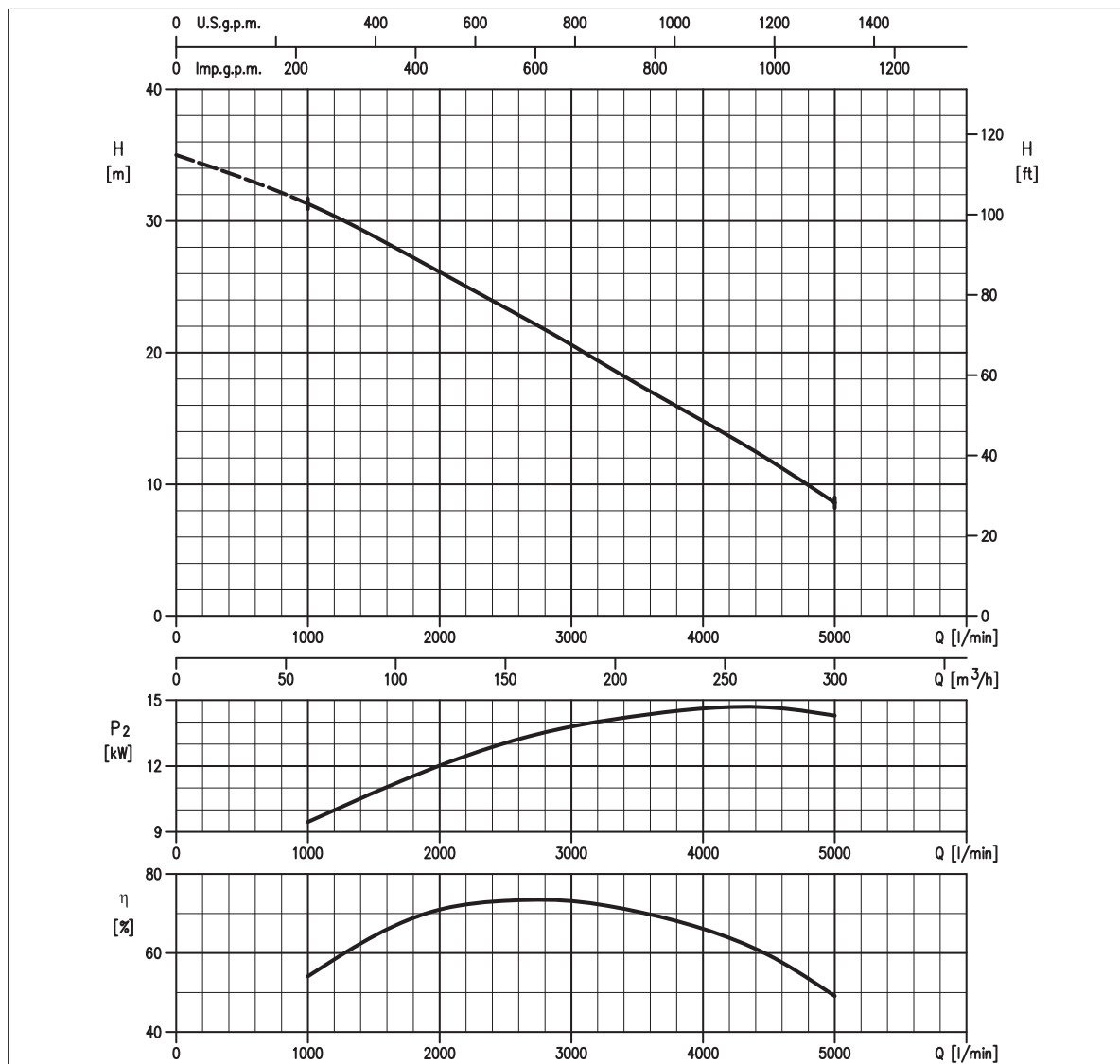


TABELLA PRESTAZIONI • PERFORMANCE TABLE • TABLEAU DE PERFORMANCES

Modello Model Modèle	P ₂		Q = Portata / Flow rate / Débit									
	[HP]	[kW]	l/min m ³ /h	1000 60	2000 120	2500 150	3000 180	3400 204	4000 240	4500 270	5000 300	5500 330
150DML515	20	15		31,3	26,1	23,4	20,6	18,2	14,8	11,9	8,6	-

H = Prevalenza / Head / Hauteur manométrique totale [m]

IDRAULICA • HYDRAULIC • HYDRAULIQUE

Girante Impeller Roue	MONOCANALE SINGLE-CHANNEL MONOCANAL
Mandata Flanges Brides	DN 150 mm
Massimo diametro passaggi liberi Maximum solid diameter Passage libre maximum	76 mm
Temperatura massima del liquido Maximum liquid temperature Température maximale du liquide	40°C
Doppia tenuta meccanica Double mechanical seal Double garniture mécanique	SiC/SiC/NBR Cer/Carb/NBR

TIPO POMPA • PUMP TYPE • TYPE DE POMPE

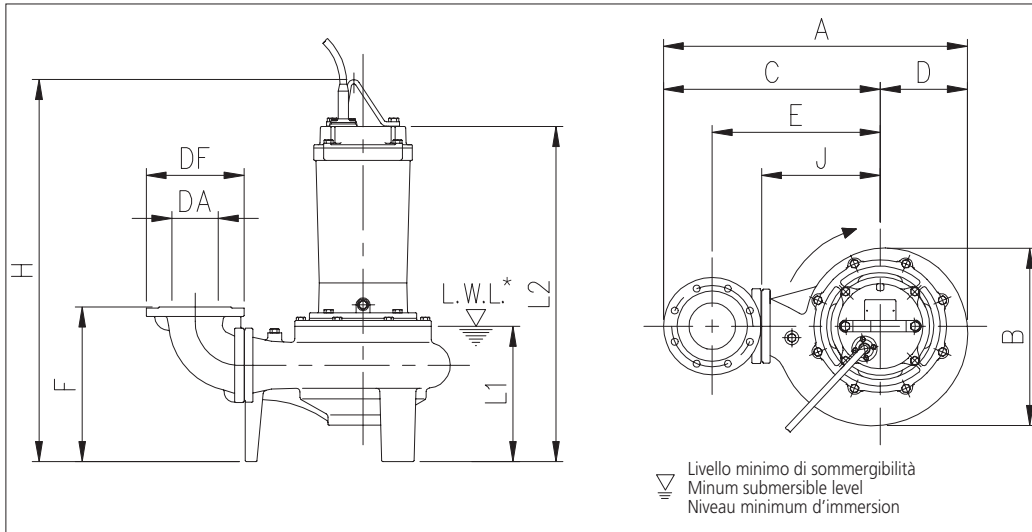
Peso Weight Poids	172 kg	Costruzione Construction Construction	GHISA CAST IRON FONTE
-------------------------	---------------	---	--------------------------------------

MOTORE • MOTOR • MOTEUR

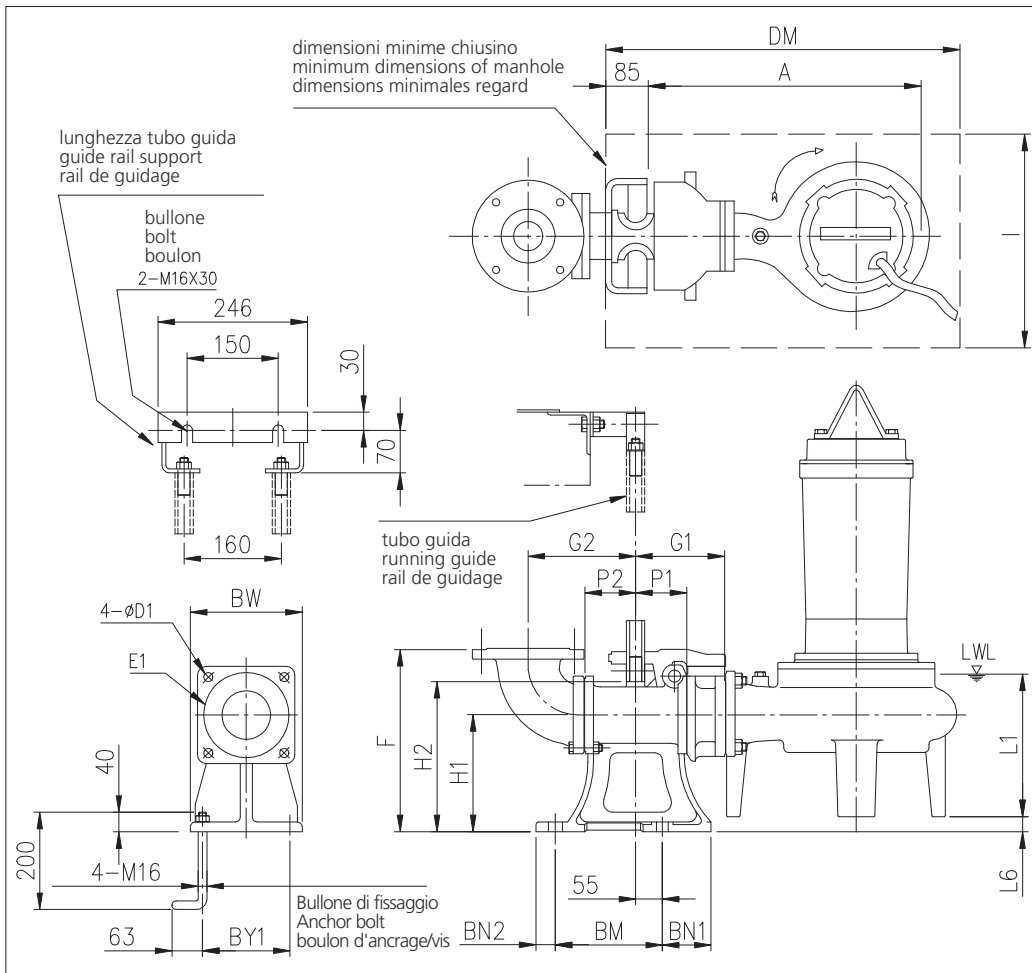
Tensione Power Tension	380-415V ±10% 50 Hz Y/Δ	Cavo Cable Câble	10 m
Avviamento ora Starts per hour Nombre de démarrages par huere	7	P ₂	15 kW
Classe di isolamento Insulation class Classe d'isolation	F	Voltaggio Start Current Ampérage au démarrage	380 V 400 V 415 V
Grado di protezione Protection degree Indice de protection	IP 68	Corrente di avviamento Current 100% Ampérage 100%	199,8 A 211,9 A 280,9 A
		Velocità di rotazione (rpm) Rotation speed (rpm) Vitesse de rotation (rpm)	31,5 A 31 A 31 A
			1450



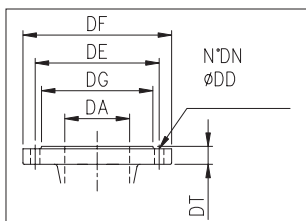
DIMENSIONI • DIMENSIONS • DIMENSIONS



Mod.	Dim. [mm]											[kg]	
	DA	kW	A	B	C	D	E	F	H	J	L1		L2
150DML515	150	15	808,5	455	587,5	221	445	385	938	315	329	778	172,0



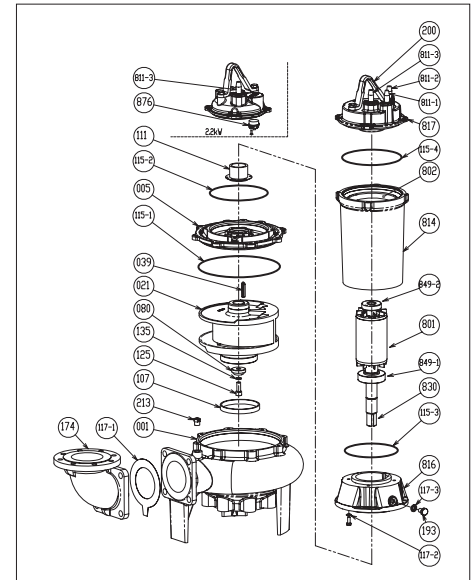
Mod.	Dim. [mm]																Piede di accopp. Coupling foot Pied d'accoupl.	[kg]			
	A	P1	P2	G1	G2	F	H1	H2	L1	L6	BN1	BN2	BM	BY1	BW	DM			I	D1	E1
150DML515	721	105	105	185	235	400	240	265	329	15	100	40	220	180	230	1000	700	19	175	LL100	46,0



**DIMENSIONI FLANGE
DIMENSIONS FLANGES
DIMENSIONS BRIDES**

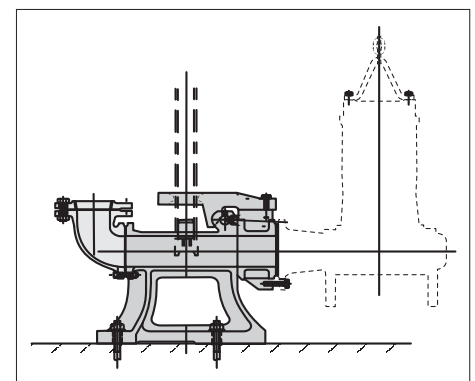
DA	DG	DE	Dim. DF	DT	N° DN	DD
150	212	240	285	26	8	22

RICAMBI • REPLACEMENT PARTS • PIÈCES DE RECHANGE



21	Girante - Impeller - Roue
039	Linguetta - Key - Languette
080	Bussola - Bushing - Bague d'usure
107	Anello di rasamento - Wear ring - Anneau arasement
111	Tenuta meccanica - Mechanical seal - Garniture mécanique
115-1	Anello OR - O-ring - Bague OR
115-2	Anello OR - O-ring - Bague OR
115-3	Anello OR - O-ring - Bague OR
115-4	Anello OR - O-ring - Bague OR
117-1	Guarnizione - Gasket - Joint
117-2	Guarnizione - Gasket - Joint
120-6	Vite - Screw - Vis
120-7	Vite - Screw - Vis
135	Rondella - Washer - Rondelle d'étanchiété
135-1	Rondella - Washer - Rondelle d'étanchiété
135-2	Dado - Nut - Écrou
174	Raccordo mandata - Discharge bend - raccord refoulement
275	Vite - Screw - Vis
811-1	Cavo - Cable - Câble
811-1	Cavo - Cable - Câble
811-2	Cavo segnale - Cable signal - Câble de signalisation
849-1	Cuscinetto - Bearing - Coussinet
849-2	Cuscinetto - Bearing - Coussinet

**MODELLO KIT SCIVOLO DISCESA (QDC)
QDC MODEL
MODÈLE KIT PIED D'ASSISE (QDC)
LL100**



GIRANTE MONOCANALE SINGLE-CHANNEL IMPELLER ROUE MONOCANAL

CURVE DI PRESTAZIONE • PERFORMANCE CURVES • COURBES DE PERFORMANCE

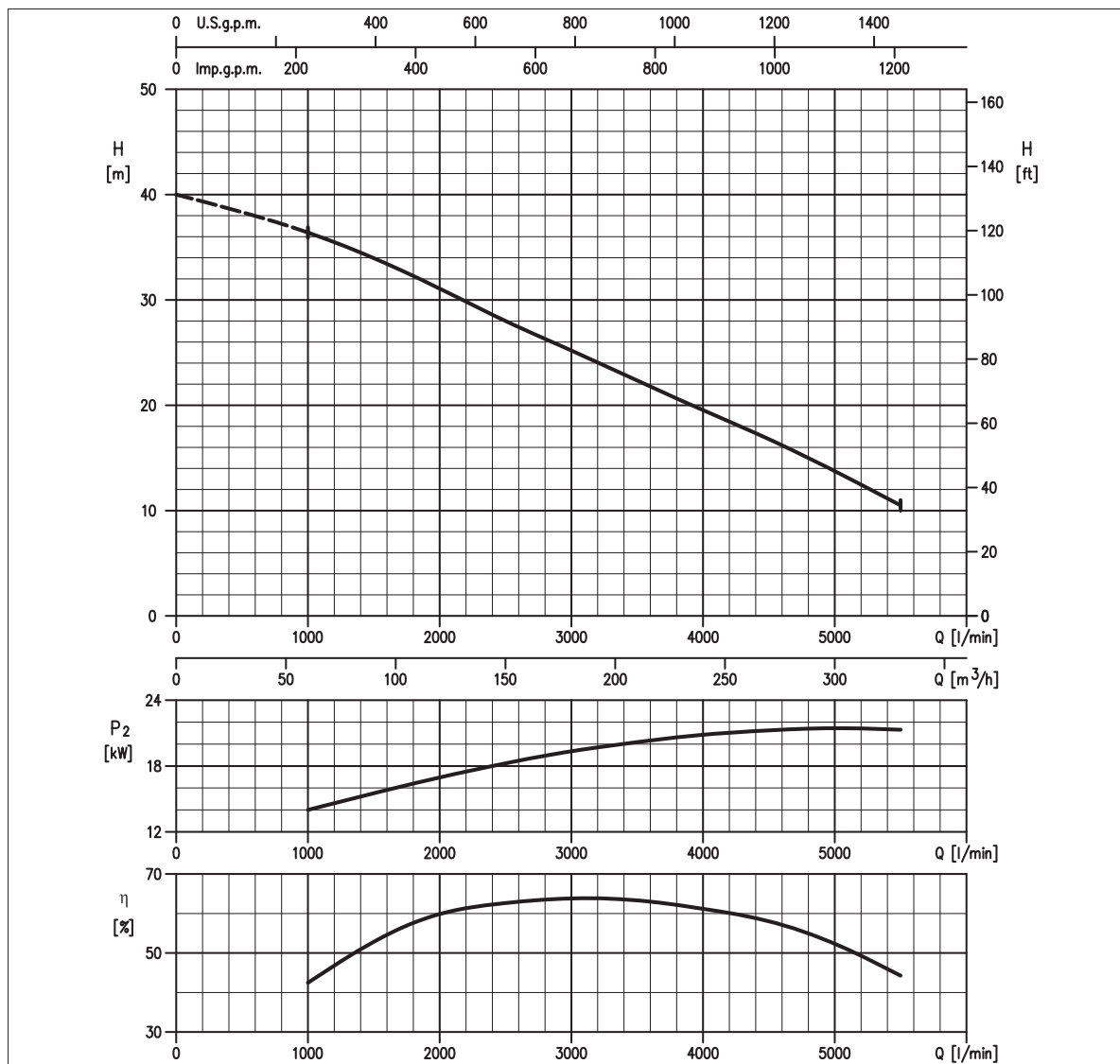


TABELLA PRESTAZIONI • PERFORMANCE TABLE • TABLEAU DE PERFORMANCES

Modello Model Modèle	P ₂		Q = Portata / Flow rate / Débit									
	[HP]	[kW]	l/min	1000	2000	2500	3000	3400	4000	4500	5000	5500
			m³/h	60	120	150	180	204	240	270	300	330
150DML522	30	22		36,4	31,1	28,0	25,2	22,9	19,5	16,8	13,8	10,5

H = Prevalenza / Head / Hauteur manométrique totale [m]

IDRAULICA • HYDRAULIC • HYDRAULIQUE

Girante Impeller Roue	MONOCANALE SINGLE-CHANNEL MONOCANAL
Mandata Flanges Brides	DN 150 mm
Massimo diametro passaggi liberi Maximum solid diameter Passage libre maximum	76 mm
Temperatura massima del liquido Maximum liquid temperature Température maximale du liquide	40°C
Doppia tenuta meccanica Double mechanical seal Double garniture mécanique	SiC/SiC/NBR Cer/Carb/NBR

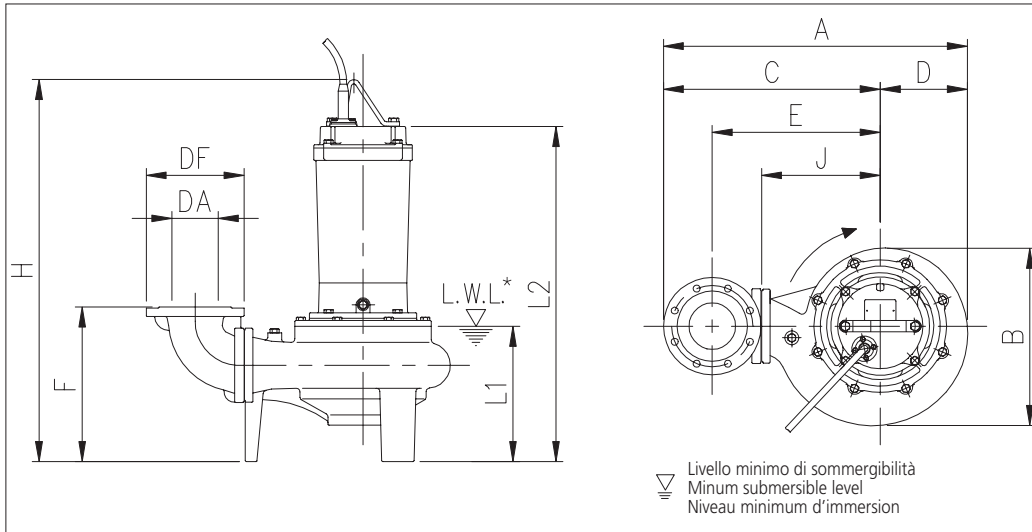
TIPO POMPA • PUMP TYPE • TYPE DE POMPE

Peso Weight Poids	232 kg	Costruzione Construction Construction	GHISA CAST IRON FONTE
-------------------------	---------------	---	--------------------------------------

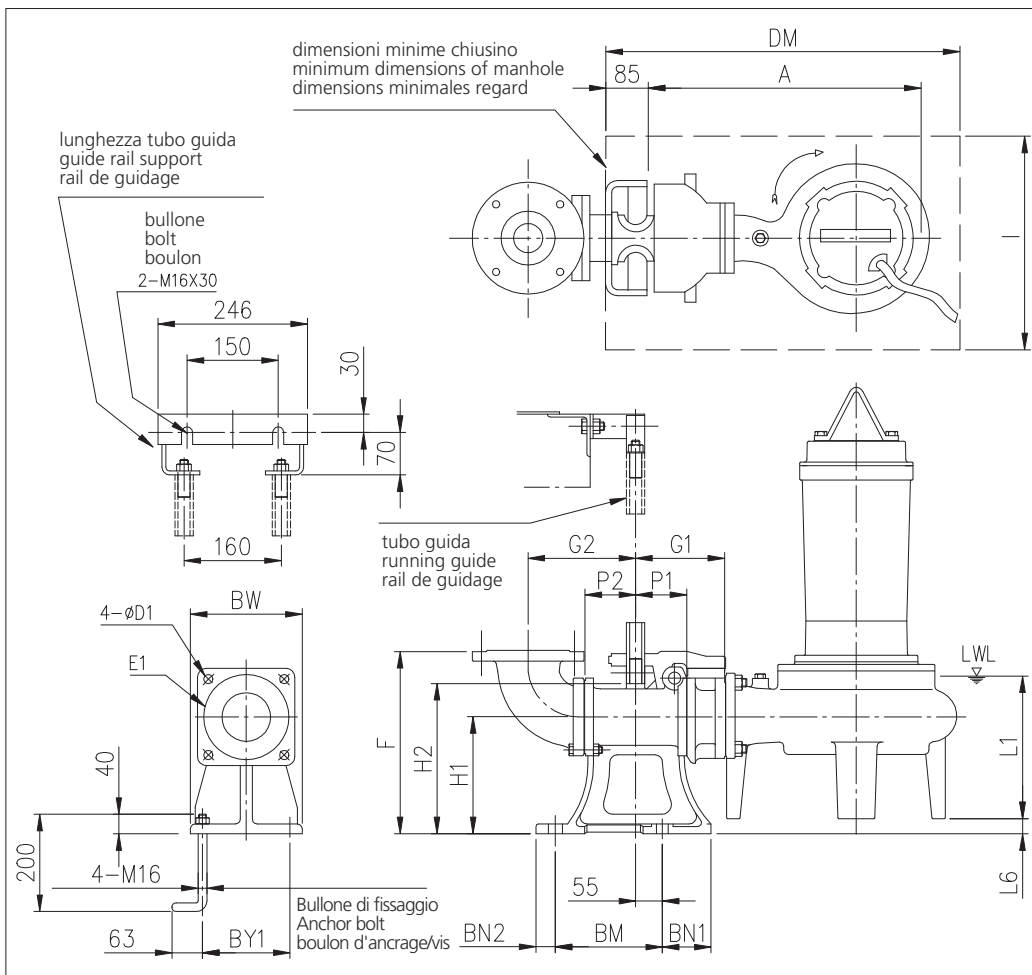
MOTORE • MOTOR • MOTEUR

Tensione Power Tension	380-415V ±10% 50 Hz Y/Δ	Cavo Cable Câble	10 m
Avviamento ora Starts per hour Nombre de démarrages par huere	7	P ₂	22 kW
Classe di isolamento Insulation class Classe d'isolation	F	Voltaggio Start Current Ampérage au démarrage	380 V 400 V 415 V
Grado di protezione Protection degree Indice de protection	IP 68	Corrente 100% Current 100% Ampérage 100%	299,8 A 318,5 A 332,7 A
		Velocità di rotazione (rpm) Rotation speed (rpm) Vitesse de rotation (rpm)	1450

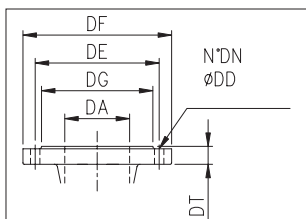
DIMENSIONI • DIMENSIONS • DIMENSIONS



Mod.	Dim. [mm]												[kg]
	DA	kW	A	B	C	D	E	F	H	J	L1	L2	
150DML522	150	22	852,5	497	607,5	245	465	388	1021	335	342	841	232,0



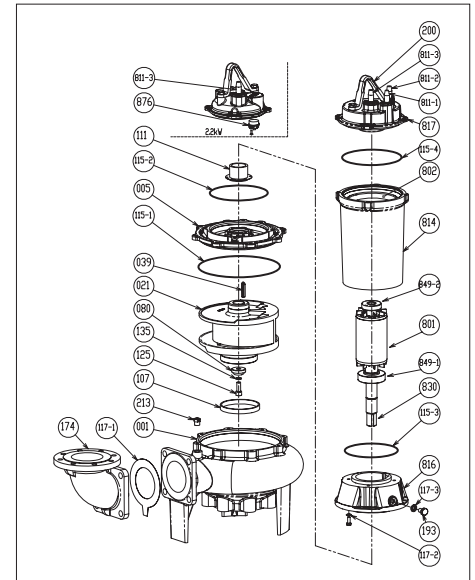
Mod.	Dim. [mm]																	Piede di accopp. Coupling foot Pied d'accoupl.	[kg]		
	A	P1	P2	G1	G2	F	H1	H2	L1	L6	BN1	BN2	BM	BY1	BW	DM	I			D1	E1
150DML522	765	105	105	185	235	400	240	265	342	12	100	40	220	180	230	1000	700	19	175	LL100	46,0



**DIMENSIONI FLANGE
DIMENSIONS FLANGES
DIMENSIONS BRIDES**

DA	DG	DE	Dim. DF	DT	N° DN	DD
150	212	240	285	26	8	22

RICAMBI • REPLACEMENT PARTS • PIÈCES DE RECHANGE



21	Girante - Impeller - Roue
039	Linguetta - Key - Languette
080	Bussola - Bushing - Bague d'usure
107	Anello di rasamento - Wear ring - Anneau arasement
111	Tenuta meccanica - Mechanical seal - Garniture mécanique
115-1	Anello OR - O-ring - Bague OR
115-2	Anello OR - O-ring - Bague OR
115-3	Anello OR - O-ring - Bague OR
115-4	Anello OR - O-ring - Bague OR
117-1	Guarnizione - Gasket - Joint
117-2	Guarnizione - Gasket - Joint
120-6	Vite - Screw - Vis
120-7	Vite - Screw - Vis
135	Rondella - Washer - Rondelle d'étanchiété
135-1	Rondella - Washer - Rondelle d'étanchiété
135-2	Dado - Nut - Écrou
174	Raccordo mandata - Discharge bend - raccord refoulement
275	Vite - Screw - Vis
811-1	Cavo - Cable - Câble
811-1	Cavo - Cable - Câble
811-2	Cavo segnale - Cable signal - Câble de signalisation
849-1	Cuscinetto - Bearing - Coussinet
849-2	Cuscinetto - Bearing - Coussinet

**MODELLO KIT SCIVOLO DISCESA (QDC)
QDC MODEL
MODÈLE KIT PIED D'ASSISE (QDC)
LL100**

