

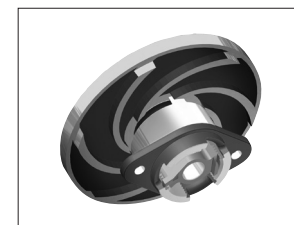
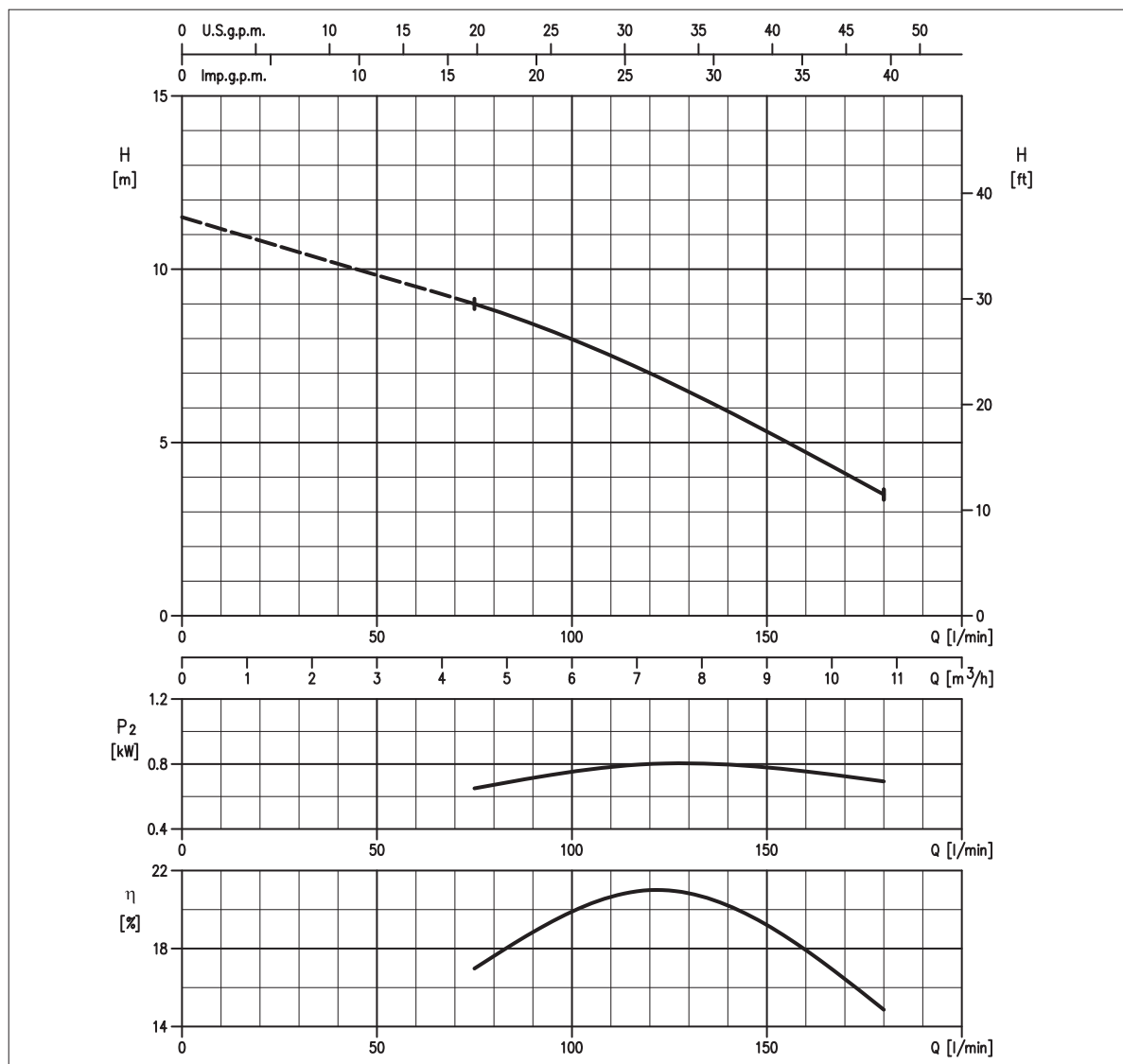

GRINDER
motralec

S.C. 07/13 DRS/A40-115-1.1M

4 rue Lavoisier . ZA Lavoisier . 95223 HERBLAY CEDEX

Tel. : 01.39.97.65.10 / Fax. : 01.39.97.68.48

Demande de prix / e-mail : service-commercial@motralec.com

www.motralec.com
CURVE DI PRESTAZIONE • PERFORMANCE CURVES • COURBES DE PERFORMANCE

TABELLA PRESTAZIONI • PERFORMANCE TABLE • TABLEAU DE PERFORMANCES

Modello Model Modèle	P ₂		Q = Portata / Flow rate / Débit					
	[HP]	[kW]	l/min 75 m³/h 5	120 7	180 11	225 14	240 14	270 16
DRS/A40-115-1.1M	1,5	1.1	9	7	3,5	-	-	-

H = Prevalenza / Head / Hauteur manometrique totale [m]

IDRAULICA • HYDRAULIC • HYDRAULIQUE

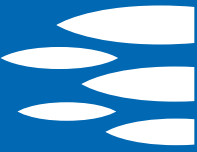
Girante Impeller Roue	GRINDER
Mandata Flanges Brides	DN 40 mm
Massimo diametro passaggi liberi Maximum solid diameter Passage libre maximum	-
Temperatura massima del liquido Maximum liquid temperature Température maximale du liquide	40°C
Tenuta meccanica Mechanical seal Garniture mécanique	Anello di tenuta in Nitrile (lato motore) SIC/SIC (lato girante) Lip seal in Nitrile (Motor side) SIC/SIC (Impeller side) Joint à lèvres en NBR (côté moteur) SIC/SIC (côté roue)

TIPO POMPA • PUMP TYPE • TYPE DE POMPE

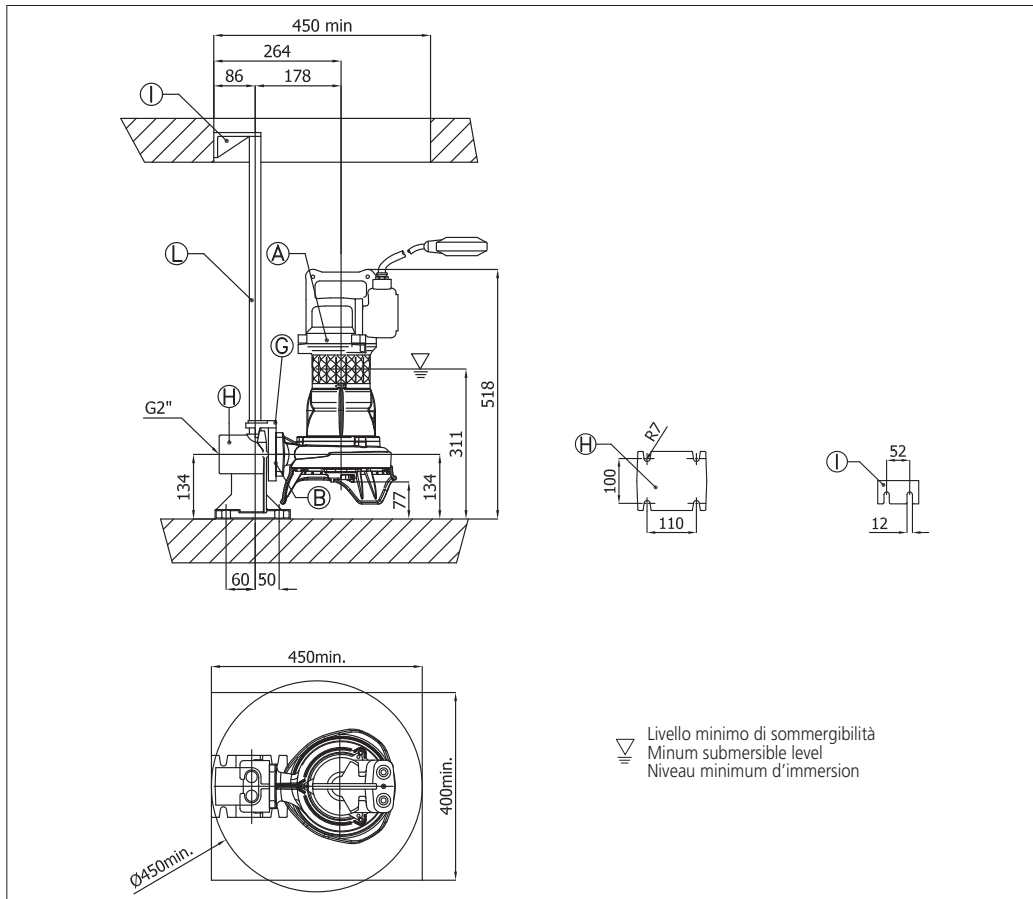
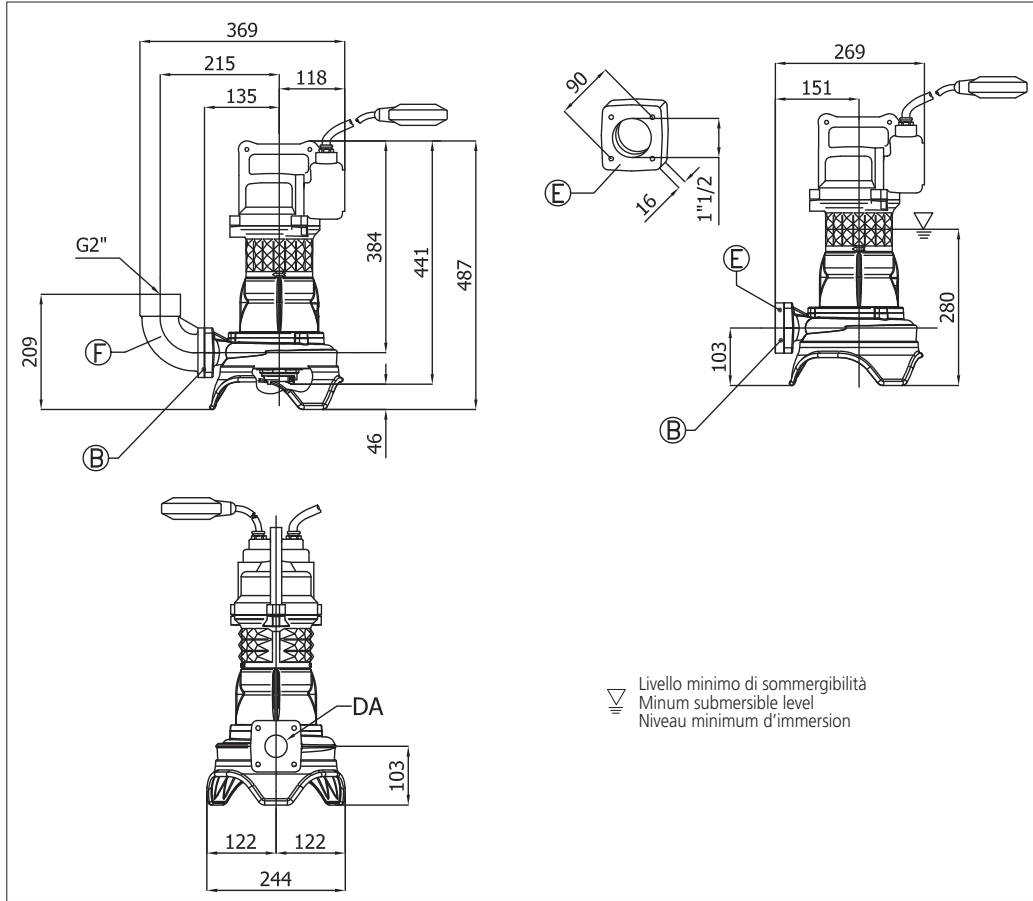
Peso Weight Poids	30 kg	Costruzione Construction Construction	GHISA CAST IRON FONTE
-------------------------	--------------	---	--------------------------------------

MOTORE • MOTOR • MOTEUR

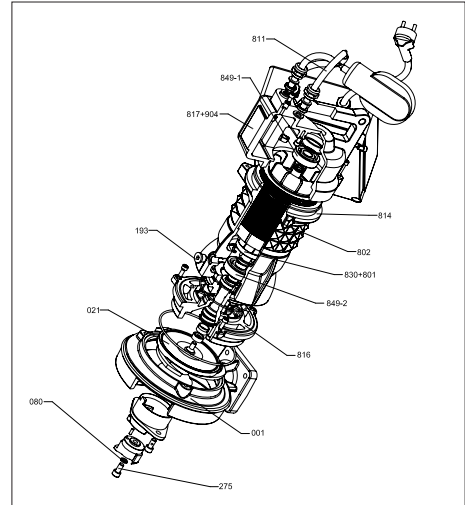
Tensione Power Tension	230V ±10%, 50 Hz	Cavo Cable Câble	10 m
Avviamento ora Starts per hour Nombre de démarrages par huere	15	P ₂	1.1 kW
Classe di isolamento Insulation class Classe d'isolation	H	Corrente di avviamento Start Current Ampérage au démarrage	21 A
Grado di protezione Protection degree Indice de protection	IP 68	Corrente 100% Current 100% Ampérage 100%	7,5 A
		Velocità di rotazione (rpm) Rotation speed (rpm) Vitesse de rotation (rpm)	2850



DIMENSIONI • DIMENSIONS • DIMENSIONS



RICAMBI • REPLACEMENT PARTS • PIÈCES DE RECHANGE



KIT RIPARAZIONE ORDINARIA:
 O-ring, Gommmini, Tenute meccaniche
 Paraolio, Rosette tappo olio
ORDINARY REPAIR KIT: O-ring, Glands, Mechanical seals, Lip seals, Oil plug washers
KIT DE RÉPARATION ORDINAIRE:
 Joint torique, Bouchon caoutchouc, Garniture mécanique, Joint à lèvres, Bouchon pour chambre à huile



KIT RIPARAZIONE COMPLETA:
 O-ring, Gommmini, Tenute meccaniche, Paraolio, Rosette tappo olio, Anelli cromati, Cavo elettrico, Molla precarico, Cuscinetti, Anelli seeger
COMPLETE REPAIR KIT: O-ring, Glands, Mechanical seals, Lip seals, Oil plug washers, Chromate rings, Electric cable, Pre-loading spring, Bearings, Circlips
KIT REPARATION COMPLET:
 Joint torique, Bouchon caoutchouc, Garniture mécanique, Joint à lèvres, Bouchon pour chambre à huile, Joint chromé, Cable électrique, Ressort, Roulement, Circlips



Anello tritratore
 Grinder ring
 Anneau couteau grinder
 Tagliente tritratore
 Cutting device
 Couteau grinder

**SELEZIONE QDC
 SELECTION QDC
 SÉLECTION QDC**

Modello Kit scivolo discesa QDC Model Modèle Kit pied d'assise PA DN50	
Gomito/Curva di mandata Elbow Coude/courbe de sortie CUF 2"	
Controflange Counterflanges Contre-bridges FL 1" 1/2 T FL 2" FL2" 1/2	

TABELLA DIMENSIONI • DIMENSIONS TABLE • TABLEAU DE DIMENSIONS

DA	Modello • Model • Modèle	[kW]	Peso • Weight • Poids [kg]
40	DRS/A40-115-1.1M	1.1	30



GRINDER

S.C. 07/13 DRS/A40-136-1.1M

CURVE DI PRESTAZIONE • PERFORMANCE CURVES • COURBES DE PERFORMANCE

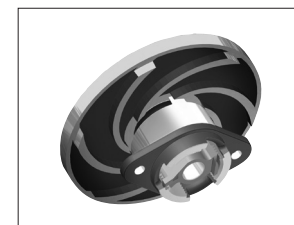
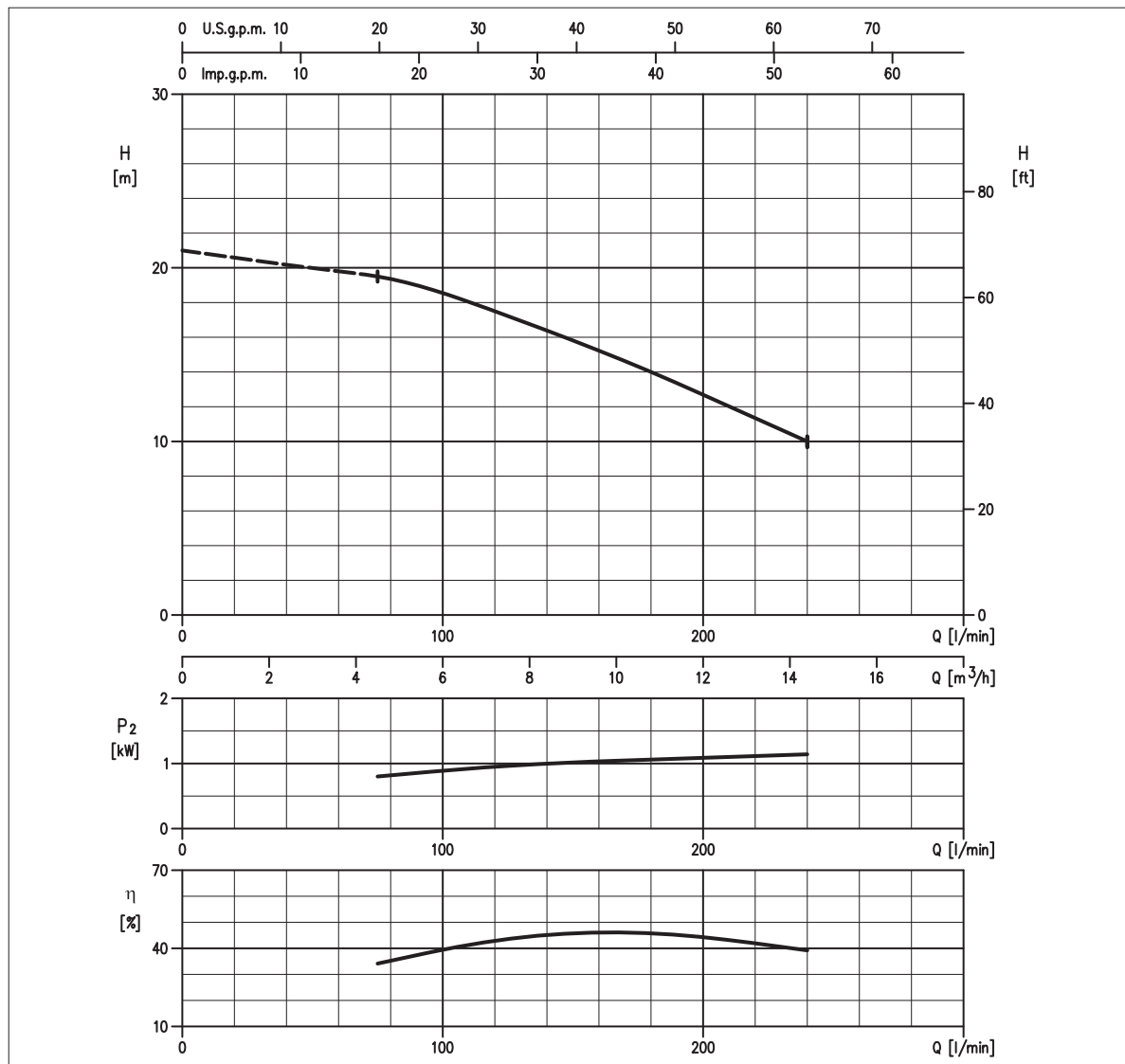


TABELLA PRESTAZIONI • PERFORMANCE TABLE • TABLEAU DE PERFORMANCES

Modello Model Modèle	P ₂		Q = Portata / Flow rate / Débit					
	[HP]	[kW]	l/min 75 m³/h 5	120 7	180 11	225 14	240 14	270 16
DRS/A40-136-1.1M	1,5	1.1	19,5	17,5	14	11	10	-

H = Prevalenza / Head / Hauteur manométrique totale [m]

IDRAULICA • HYDRAULIC • HYDRAULIQUE

Girante Impeller Roue	GRINDER
Mandata Flanges Brides	DN 40 mm
Massimo diametro passaggi liberi Maximum solid diameter Passage libre maximum	-
Temperatura massima del liquido Maximum liquid temperature Température maximale du liquide	40°C
Tenuta meccanica Mechanical seal Garniture mécanique	Anello di tenuta in Nitrile (lato motore) SIC/SIC (lato girante) Lip seal in Nitrile (Motor side) SIC/SIC (Impeller side) Joint à lèvres en NBR (côté moteur) SIC/SIC (côté roue)

TIPO POMPA • PUMP TYPE • TYPE DE POMPE

Peso Weight Poids	40 kg	Costruzione Construction Construction	GHISA CAST IRON FONTE
-------------------------	--------------	---	--------------------------------------

MOTORE • MOTOR • MOTEUR

Tensione Power Tension	230V ±10%, 50 Hz	Cavo Cable Câble	10 m
Avviamento ora Starts per hour Nombre de démarrages par huere	15	P ₂	1.1 kW
Classe di isolamento Insulation class Classe d'isolation	H	Corrente di avviamento Start Current Ampérage au démarrage	21 A
Grado di protezione Protection degree Indice de protection	IP 68	Corrente 100% Current 100% Ampérage 100%	7,5 A
		Velocità di rotazione (rpm) Rotation speed (rpm) Vitesse de rotation (rpm)	2850



DIMENSIONI • DIMENSIONS • DIMENSIONS

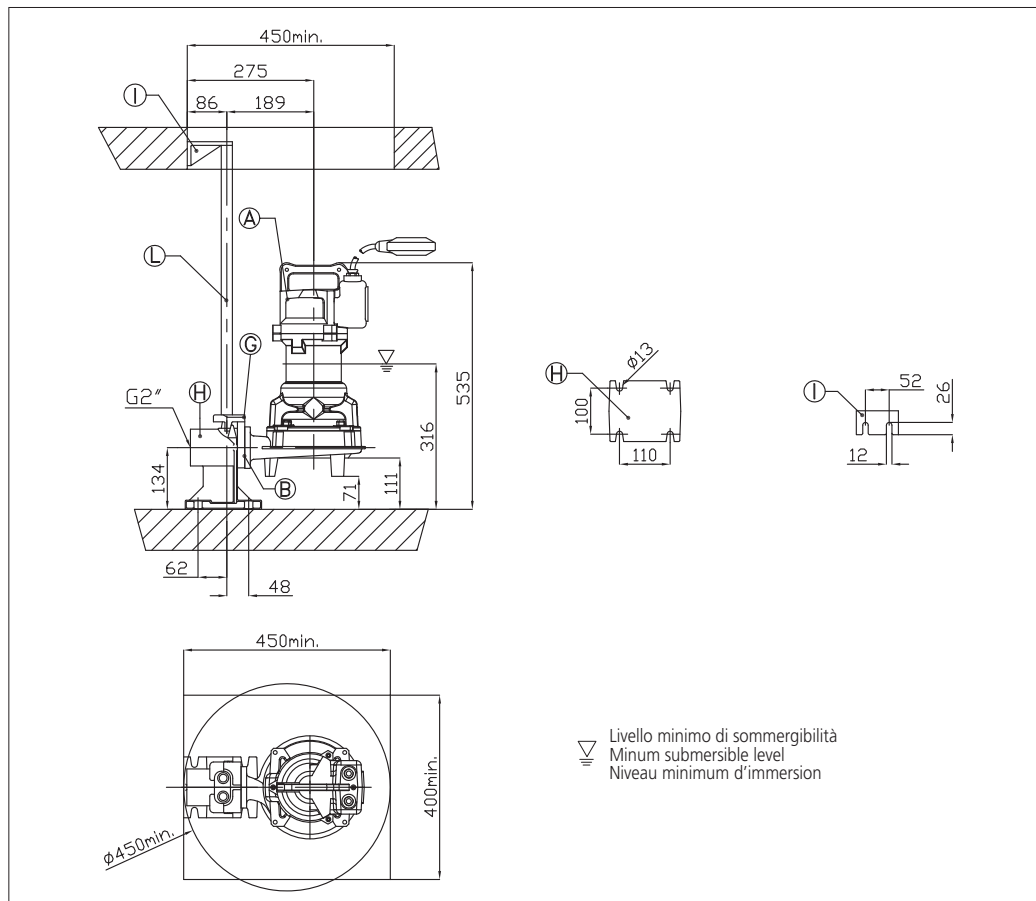
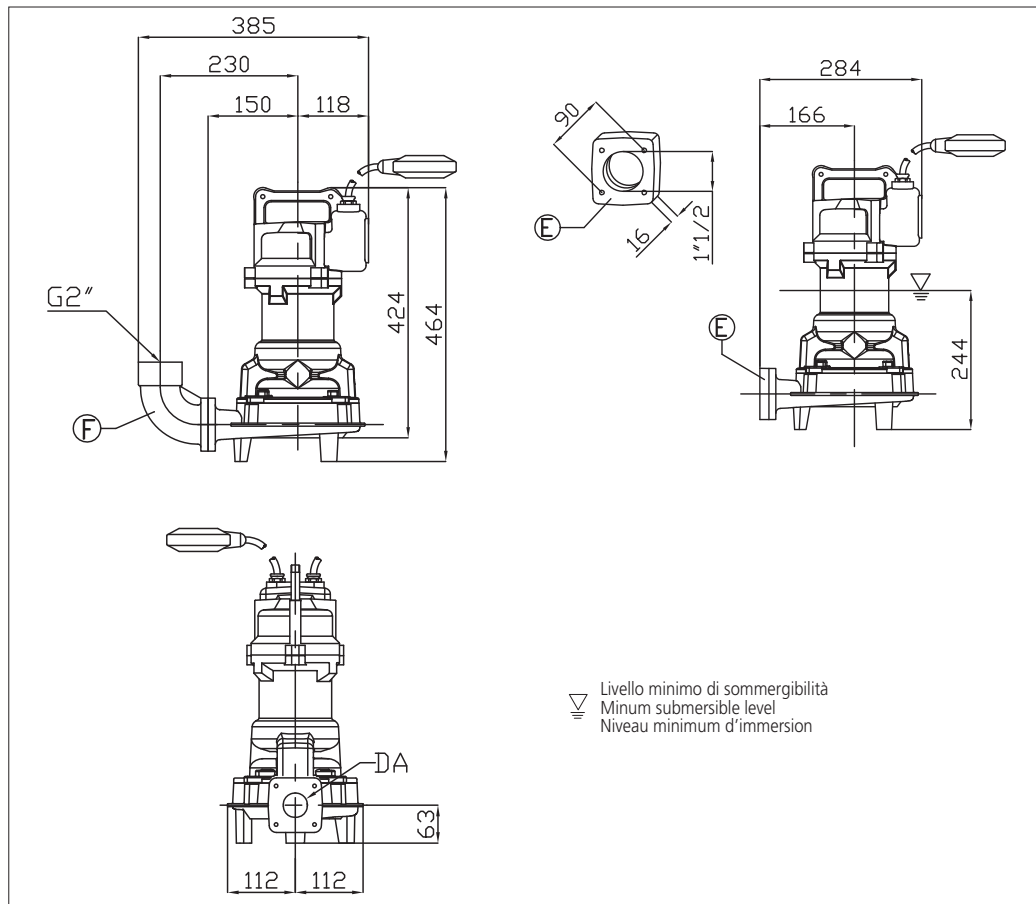
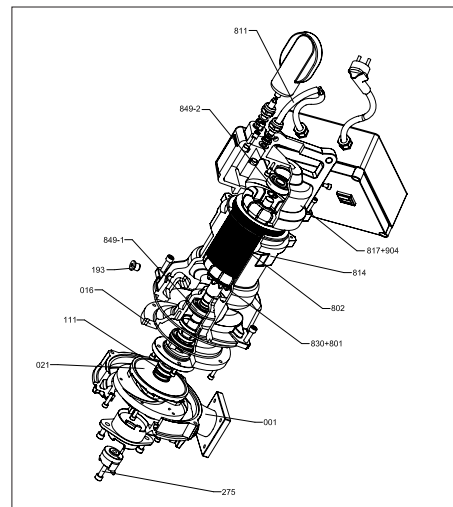


TABELLA DIMENSIONI • DIMENSIONS TABLE • TABLEAU DE DIMENSIONS

DA	Modello • Model • Modèle	[kW]	Peso • Weight • Poids [kg]
40	DRS/A40-136-1.1M	1.1	40

RICAMBI • REPLACEMENT PARTS • PIÈCES DE RECHANGE



KIT RIPARAZIONE ORDINARIA:

O-ring, Gommuni, Tenute meccaniche
Paraolio, Rosette tappo olio
ORDINARY REPAIR KIT: O-ring,
Glands, Mechanical seals, Lip seals, Oil
plug washers

KIT DE RÉPARATION ORDINAIRE:

Joint torique, Bouchon caoutchouc,
Garniture mécanique, Joint à lèvres,
Bouchon pour chambre à huile



KIT RIPARAZIONE COMPLETA:

O-ring, Gommuni, Tenute meccaniche,
Paraolio, Rosette tappo olio, Anelli
cromati, Cavo elettrico, Molla
precarico, Cuscinetti, Anelli seeger
COMPLETE REPAIR KIT: O-ring,
Glands, Mechanical seals, Lip seals, Oil
plug washers, Chromate rings, Electric
cable, Pre-loading spring, Bearings,
Circlips

KIT REPARATION COMPLET:

Joint torique, Bouchon caoutchouc,
Garniture mécanique, Joint à lèvres,
Bouchon pour chambre à huile, Joint
chromé, Cable électrique, Ressort,
Roulement, Circlips

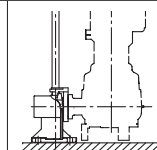


Anello tritratore
Grinder ring
Anneau couteau grinder

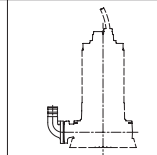
Tagliante tritratore
Cutting device
Couteau grinder

SELEZIONE QDC SELECTION QDC SÉLECTION QDC

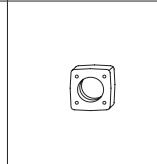
Modello Kit scivolo discesa
QDC Model
Modèle Kit pied d'assise
PA DN50



Gomito/Curva di mandata
Elbow
Coude/courbe de sortie
CUF 2"



Controflange
Counterflanges
Contre-brides
FL 1" 1/2 T
FL 2"
FL 2" 1/2





GRINDER

S.C. 07/13 DRS/A40-140-1.1M

CURVE DI PRESTAZIONE • PERFORMANCE CURVES • COURBES DE PERFORMANCE

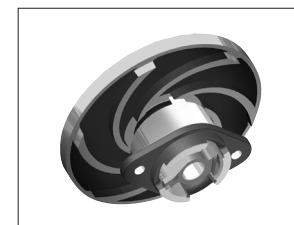
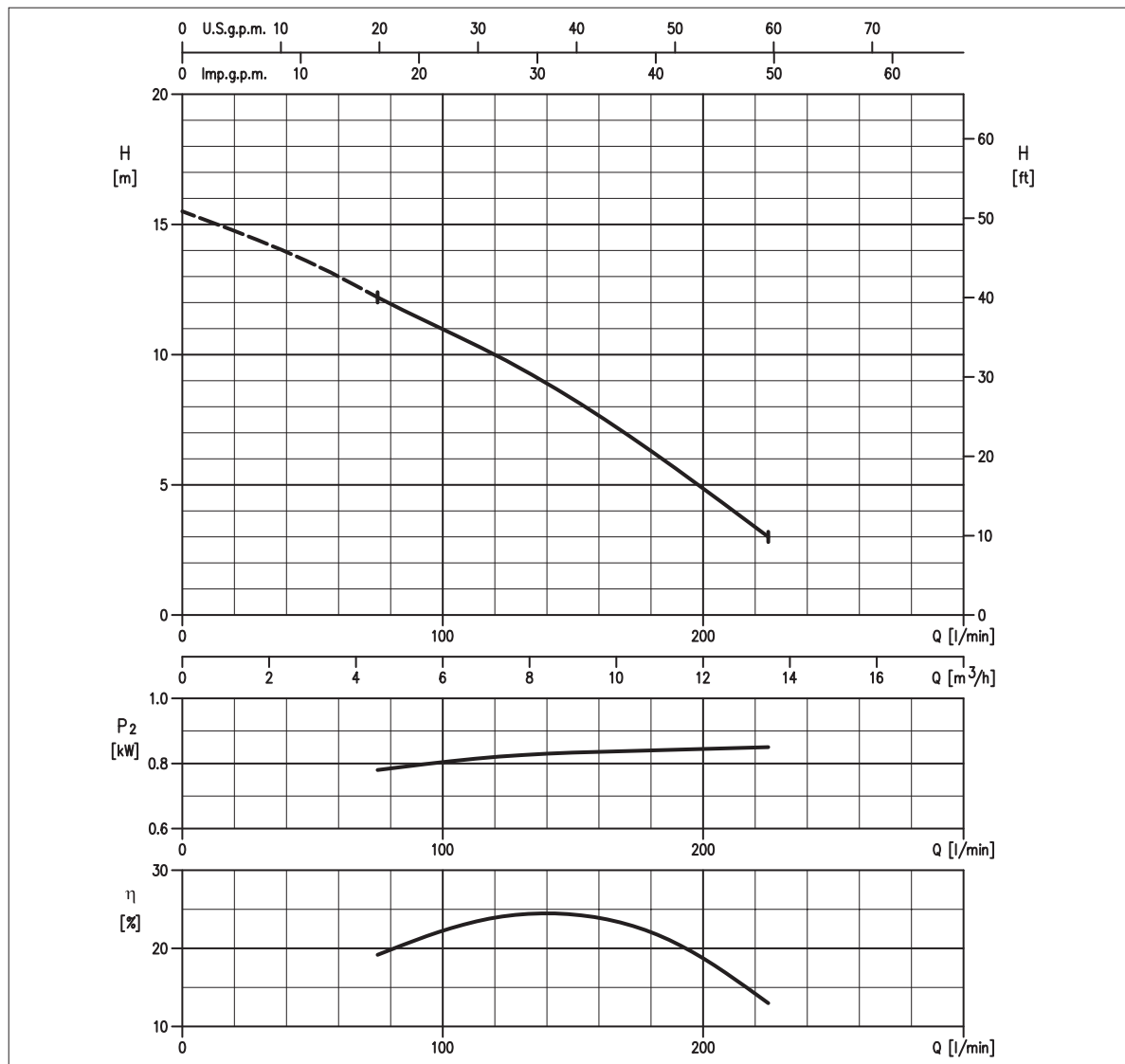


TABELLA PRESTAZIONI • PERFORMANCE TABLE • TABLEAU DE PERFORMANCES

Modello Model Modèle	P ₂		Q = Portata / Flow rate / Débit					
	[HP]	[kW]	l/min 75 m³/h 5	120 7	180 11	225 14	240 14	270 16
DRS/A40-140-1.1M	1,5	1.1	12,2	10	6,3	3	-	-

H = Prevalenza / Head / Hauteur manométrique totale [m]

IDRAULICA • HYDRAULIC • HYDRAULIQUE

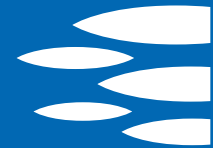
Girante Impeller Roue	GRINDER
Mandata Flanges Brides	DN 40 mm
Massimo diametro passaggi liberi Maximum solid diameter Passage libre maximum	-
Temperatura massima del liquido Maximum liquid temperature Température maximale du liquide	40°C
Tenuta meccanica Mechanical seal Garniture mécanique	Anello di tenuta in Nitrile (lato motore) SIC/SIC (lato girante) Lip seal in Nitrile (Motor side) SIC/SIC (Impeller side) Joint à lèvres en NBR (côté moteur) SIC/SIC (côté roue)

TIPO POMPA • PUMP TYPE • TYPE DE POMPE

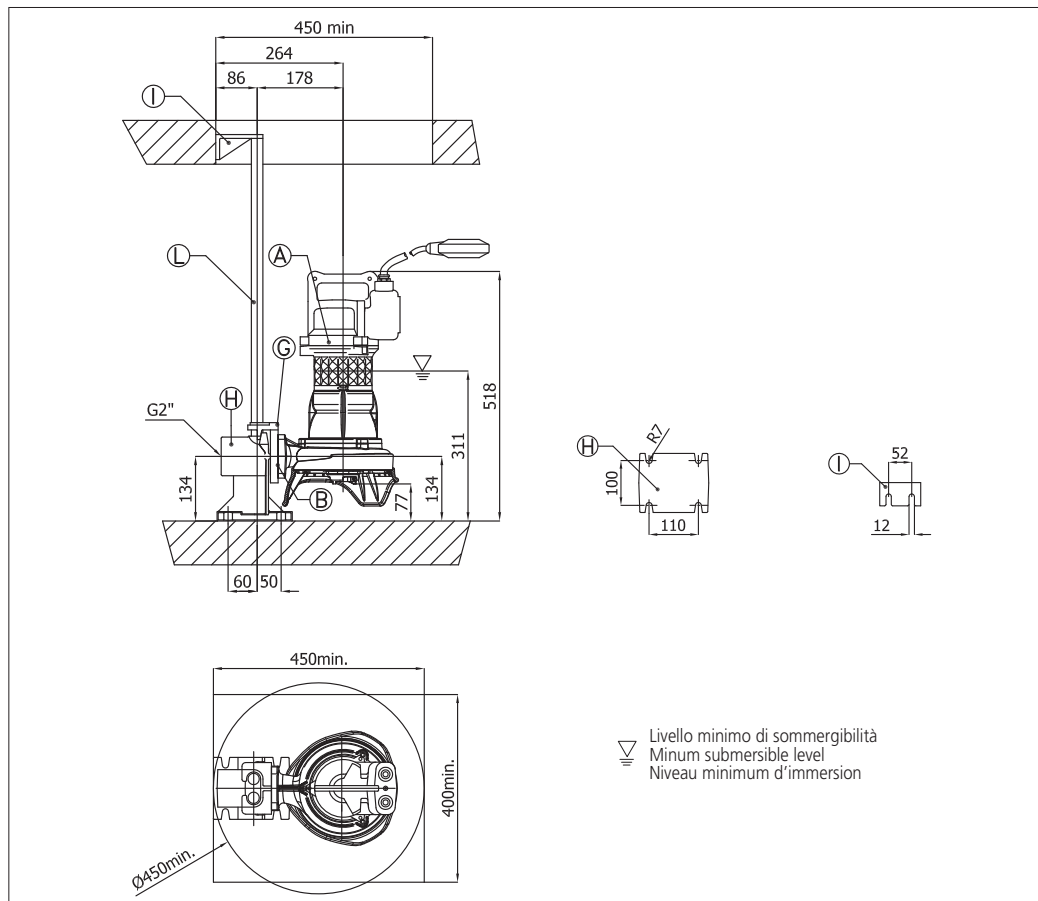
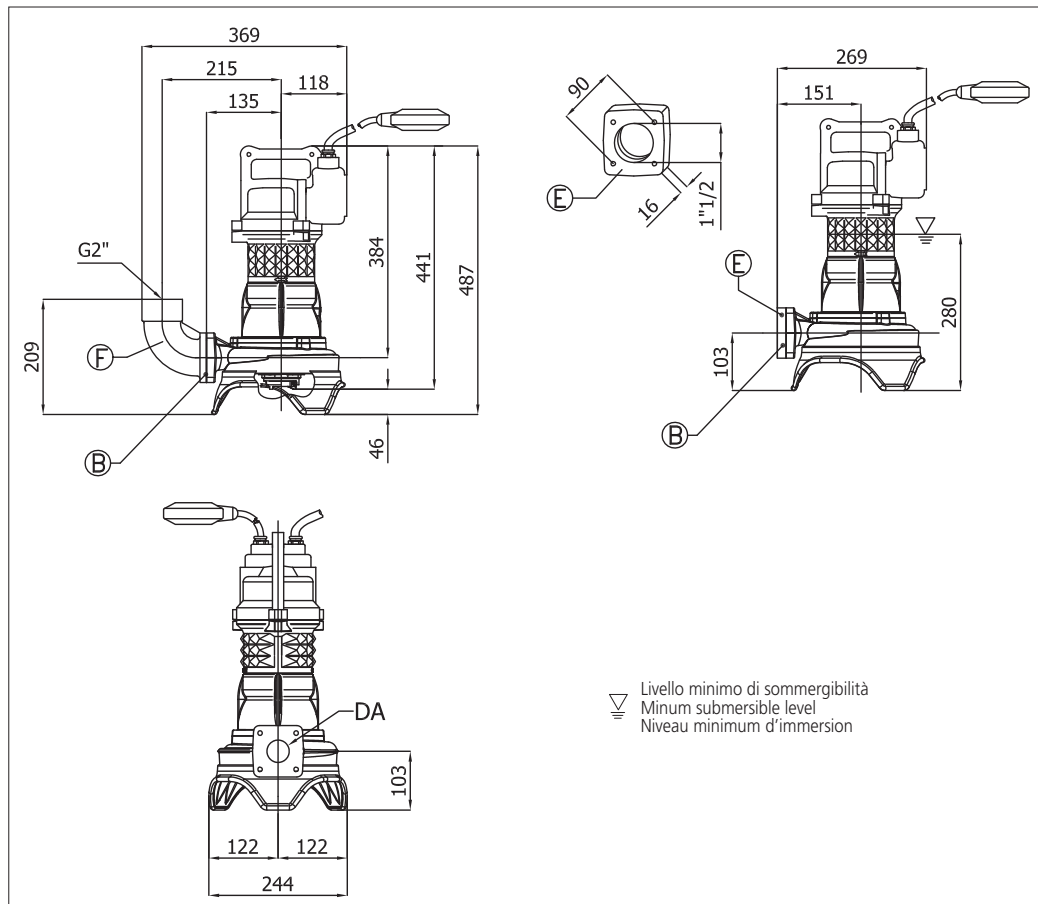
Peso Weight Poids	30 kg	Costruzione Construction Construction	GHISA CAST IRON FONTE
-------------------------	--------------	---	--------------------------------------

MOTORE • MOTOR • MOTEUR

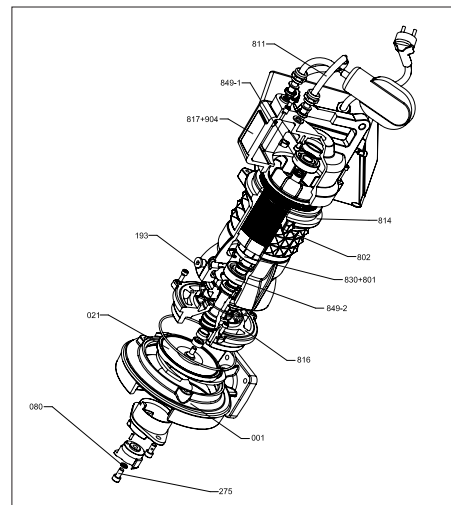
Tensione Power Tension	230V ±10%, 50 Hz	Cavo Cable Câble	10 m
Avviamento ora Starts per hour Nombre de démarrages par huere	15	P ₂	1.1 kW
Classe di isolamento Insulation class Classe d'isolation	H	Corrente di avviamento Start Current Ampérage au démarrage	21 A
Grado di protezione Protection degree Indice de protection	IP 68	Corrente 100% Current 100% Ampérage 100%	7,5 A
		Velocità di rotazione (rpm) Rotation speed (rpm) Vitesse de rotation (rpm)	2850



DIMENSIONI • DIMENSIONS • DIMENSIONS



RICAMBI • REPLACEMENT PARTS • PIÈCES DE RECHANGE



KIT RIPARAZIONE ORDINARIA:
 O-ring, Gommmini, Tenute meccaniche
 Paraolio, Rosette tappo olio
ORDINARY REPAIR KIT: O-ring, Glands, Mechanical seals, Lip seals, Oil plug washers
KIT DE RÉPARATION ORDINAIRE:
 Joint torique, Bouchon caoutchouc, Garniture mécanique, Joint à lèvres, Bouchon pour chambre à huile



KIT RIPARAZIONE COMPLETA:
 O-ring, Gommmini, Tenute meccaniche, Paraolio, Rosette tappo olio, Anelli cromati, Cavo elettrico, Molla precarico, Cuscinetti, Anelli seeger
COMPLETE REPAIR KIT: O-ring, Glands, Mechanical seals, Lip seals, Oil plug washers, Chromate rings, Electric cable, Pre-loading spring, Bearings, Circlips
KIT REPARATION COMPLET:
 Joint torique, Bouchon caoutchouc, Garniture mécanique, Joint à lèvres, Bouchon pour chambre à huile, Joint chromé, Cable électrique, Ressort, Roulement, Circlips



Anello tritratore
 Grinder ring
 Anneau couteau grinder

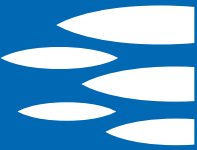
Tagliante tritratore
 Cutting device
 Couteau grinder

SELEZIONE QDC SELECTION QDC SÉLECTION QDC

Modello Kit scivolo discesa QDC Model Modèle Kit pied d'assise PA DN50	
Gomito/Curva di mandata Elbow Coude/courbe de sortie CUF 2"	
Controflange Counterflanges Contre-brides FL 1" 1/2 T FL 2" FL2" 1/2	

TABELLA DIMENSIONI • DIMENSIONS TABLE • TABLEAU DE DIMENSIONS

DA	Modello • Model • Modèle	[kW]	Peso • Weight • Poids [kg]
40	DRS/A40-140-1.1M	1.1	30



GRINDER

S.C. 07/13 DRS/A40-150-1.8M

CURVE DI PRESTAZIONE • PERFORMANCE CURVES • COURBES DE PERFORMANCE

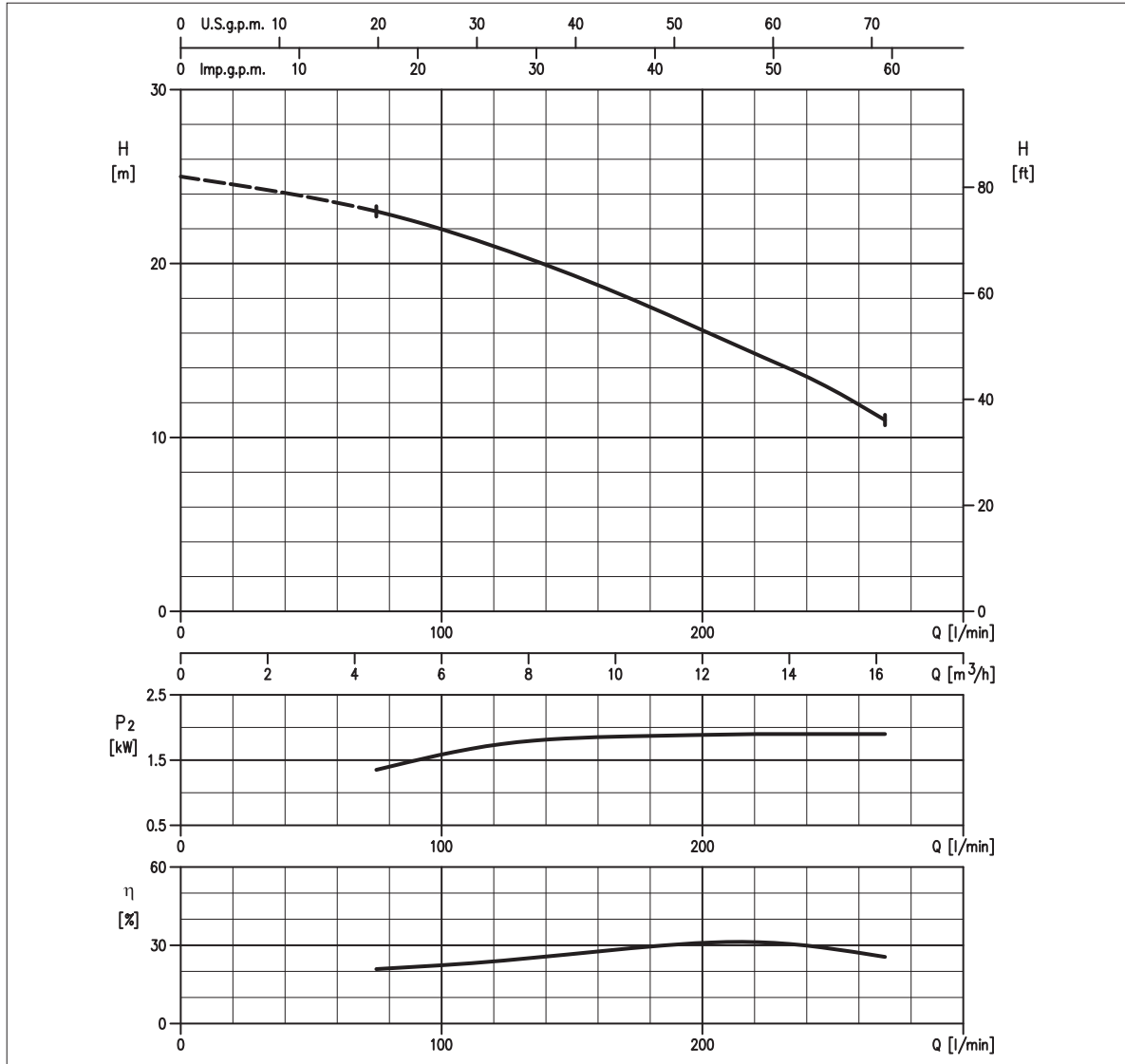


TABELLA PRESTAZIONI • PERFORMANCE TABLE • TABLEAU DE PERFORMANCES

Modello Model Modèle	P ₂		Q = Portata / Flow rate / Débit					
	[HP]	[kW]	l/min 75 m³/h 5	120 7	180 11	225 14	240 14	270 16
DRS/A40-150-1.8M	2,5	1,8	23	21	17,5	14,5	13,5	11

H = Prevalenza / Head / Hauteur manométrique totale [m]

IDRAULICA • HYDRAULIC • HYDRAULIQUE

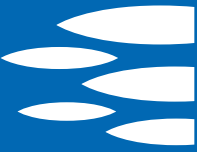
Girante Impeller Roue	GRINDER
Mandata Flanges Brides	DN 40 mm
Massimo diametro passaggi liberi Maximum solid diameter Passage libre maximum	-
Temperatura massima del liquido Maximum liquid temperature Température maximale du liquide	40°C
Tenuta meccanica Mechanical seal Garniture mécanique	Anello di tenuta in Nitrile (lato motore) SIC/SIC (lato girante) Lip seal in Nitrile (Motor side) SIC/SIC (Impeller side) Joint à lèvres en NBR (côté moteur) SIC/SIC (côté roue)

TIPO POMPA • PUMP TYPE • TYPE DE POMPE

Peso Weight Poids	40 kg	Costruzione Construction Construction	GHISA CAST IRON FONTE
-------------------------	--------------	---	--------------------------------------

MOTORE • MOTOR • MOTEUR

Tensione Power Tension	230V ±10%, 50 Hz	Cavo Cable Câble	10 m
Avviamento ora Starts per hour Nombre de démarrages par huere	15	P ₂	1.8 kW
Classe di isolamento Insulation class Classe d'isolation	H	Corrente di avviamento Start Current Ampérage au démarrage	35 A
Grado di protezione Protection degree Indice de protection	IP 68	Corrente 100% Current 100% Ampérage 100%	10 A
		Velocità di rotazione (rpm) Rotation speed (rpm) Vitesse de rotation (rpm)	2850



DIMENSIONI • DIMENSIONS • DIMENSIONS

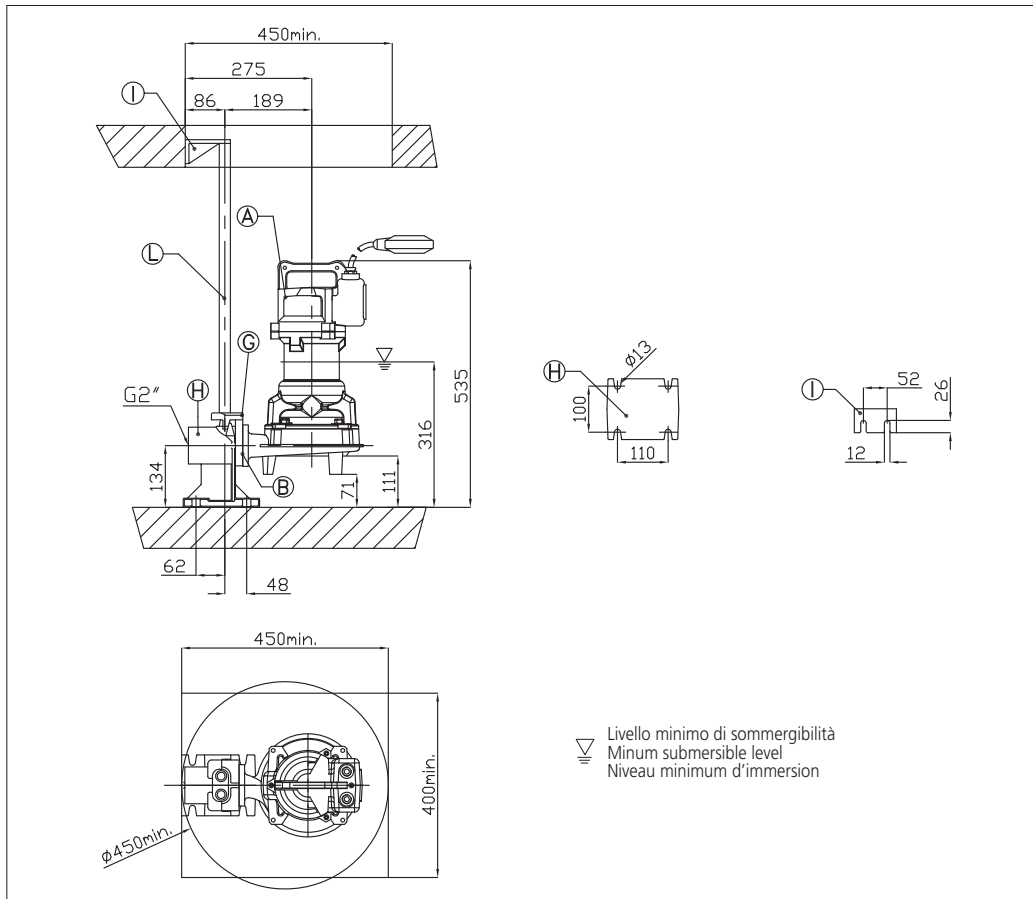
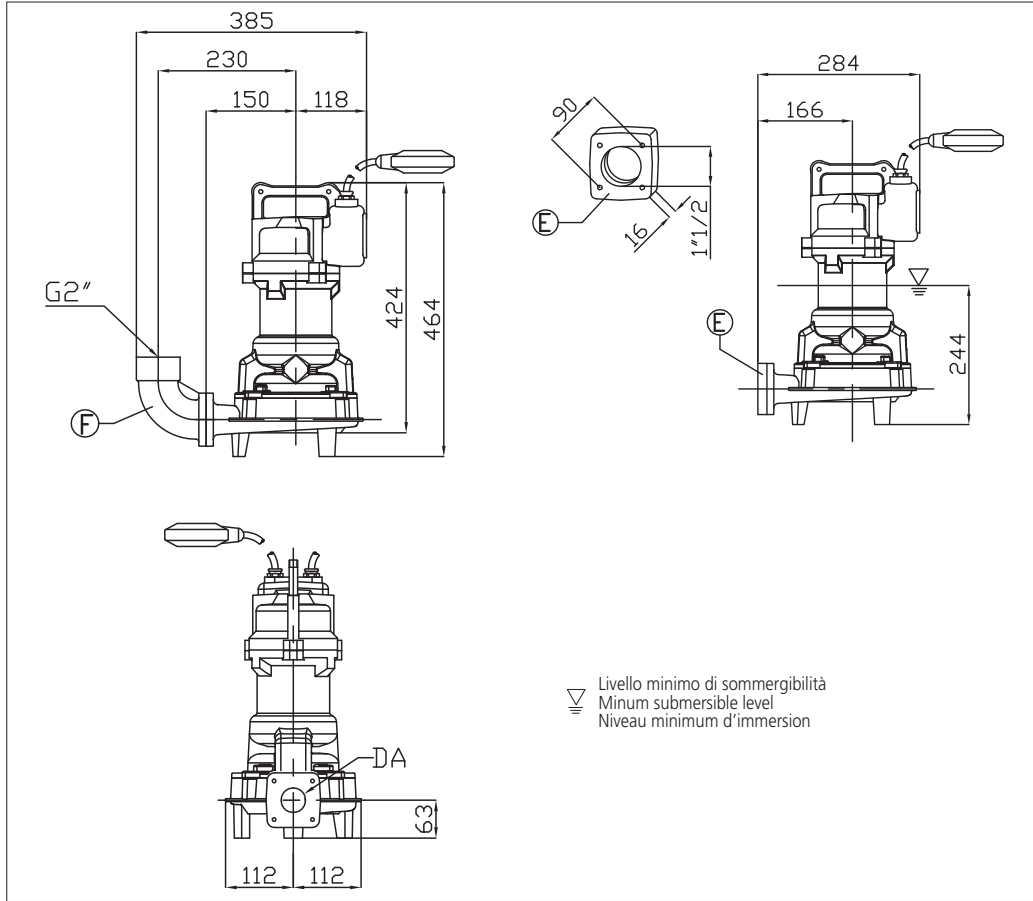
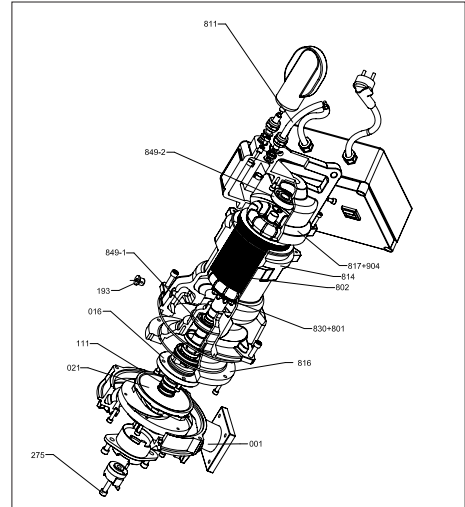


TABELLA DIMENSIONI • DIMENSIONS TABLE • TABLEAU DE DIMENSIONS

DA	Modello • Model • Modèle	[kW]	Peso • Weight • Poids [kg]
40	DRS/A40-150-1.8M	1.8	40

RICAMBI • REPLACEMENT PARTS • PIÈCES DE RECHANGE



KIT RIPARAZIONE ORDINARIA:
 O-ring, Gommuni, Tenute meccaniche
 Paraolio, Rosette tappo olio
ORDINARY REPAIR KIT: O-ring, Glands, Mechanical seals, Lip seals, Oil plug washers
KIT DE RÉPARATION ORDINAIRE:
 Joint torique, Bouchon caoutchouc, Garniture mécanique, Joint à lèvres, Bouchon pour chambre à huile



KIT RIPARAZIONE COMPLETA:
 O-ring, Gommuni, Tenute meccaniche, Paraolio, Rosette tappo olio, Anelli cromati, Cavo elettrico, Molla precarico, Cuscinetti, Anelli seeger
COMPLETE REPAIR KIT: O-ring, Glands, Mechanical seals, Lip seals, Oil plug washers, Chromate rings, Electric cable, Pre-loading spring, Bearings, Circlips
KIT REPARATION COMPLET:
 Joint torique, Bouchon caoutchouc, Garniture mécanique, Joint à lèvres, Bouchon pour chambre à huile, Joint chromé, Cable électrique, Ressort, Roulement, Circlips



Anello tritratore
 Grinder ring
 Anneau couteau grinder
 Tagliente tritratore
 Cutting device
 Couteau grinder

**SELEZIONE QDC
 SELECTION QDC
 SÉLECTION QDC**

Modello Kit scivolo discesa QDC Model Modèle Kit pied d'assise PA DN50	
Gomito/Curva di mandata Elbow Coude/courbe de sortie CUF 2"	
Controflange Counterflanges Contre-brides FL 1" 1/2 T FL 2" FL2" 1/2	



GRINDER

S.C. 07/13 DRS/A40-136-1.4

CURVE DI PRESTAZIONE • PERFORMANCE CURVES • COURBES DE PERFORMANCE

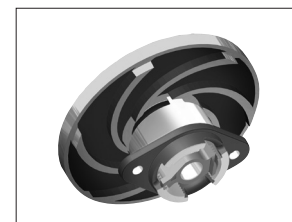
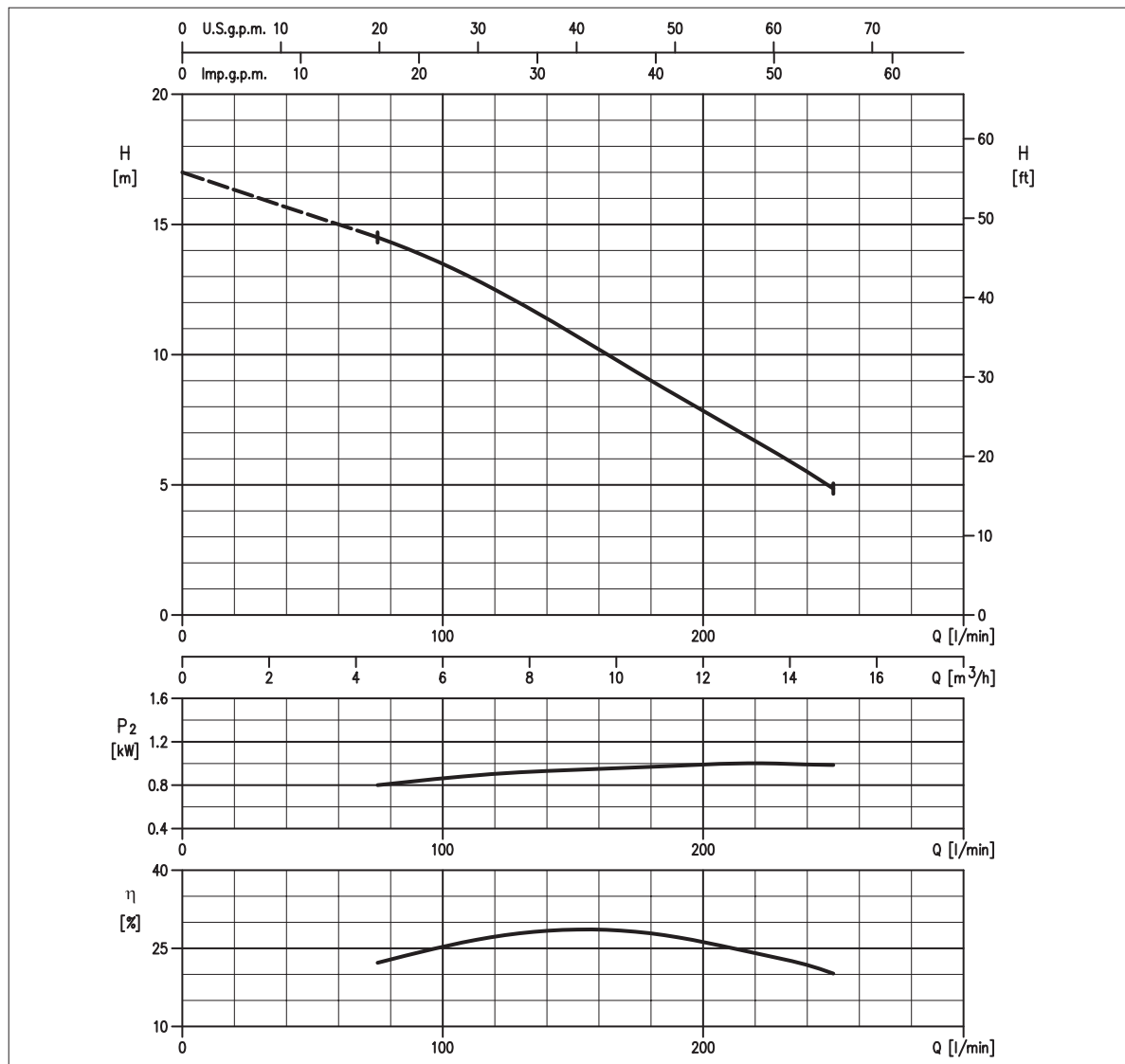


TABELLA PRESTAZIONI • PERFORMANCE TABLE • TABLEAU DE PERFORMANCES

Modello Model Modèle	P ₂		Q = Portata / Flow rate / Débit					
	[HP]	[kW]	l/min 75 m³/h 5	120 7	180 11	225 14	240 14	270 16
DRS/A40-136-1.4	2	1.4	14,5	12,5	9	6,3	5	-

H = Prevalenza / Head / Hauteur manométrique totale [m]

IDRAULICA • HYDRAULIC • HYDRAULIQUE

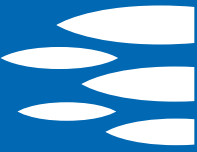
Girante Impeller Roue	GRINDER
Mandata Flanges Brides	DN 40 mm
Massimo diametro passaggi liberi Maximum solid diameter Passage libre maximum	-
Temperatura massima del liquido Maximum liquid temperature Température maximale du liquide	40°C
Tenuta meccanica Mechanical seal Garniture mécanique	Anello di tenuta in Nitrile (lato motore) SIC/SIC (lato girante) Lip seal in Nitrile (Motor side) SIC/SIC (Impeller side) Joint à lèvres en NBR (côté moteur) SIC/SIC (côté roue)

TIPO POMPA • PUMP TYPE • TYPE DE POMPE

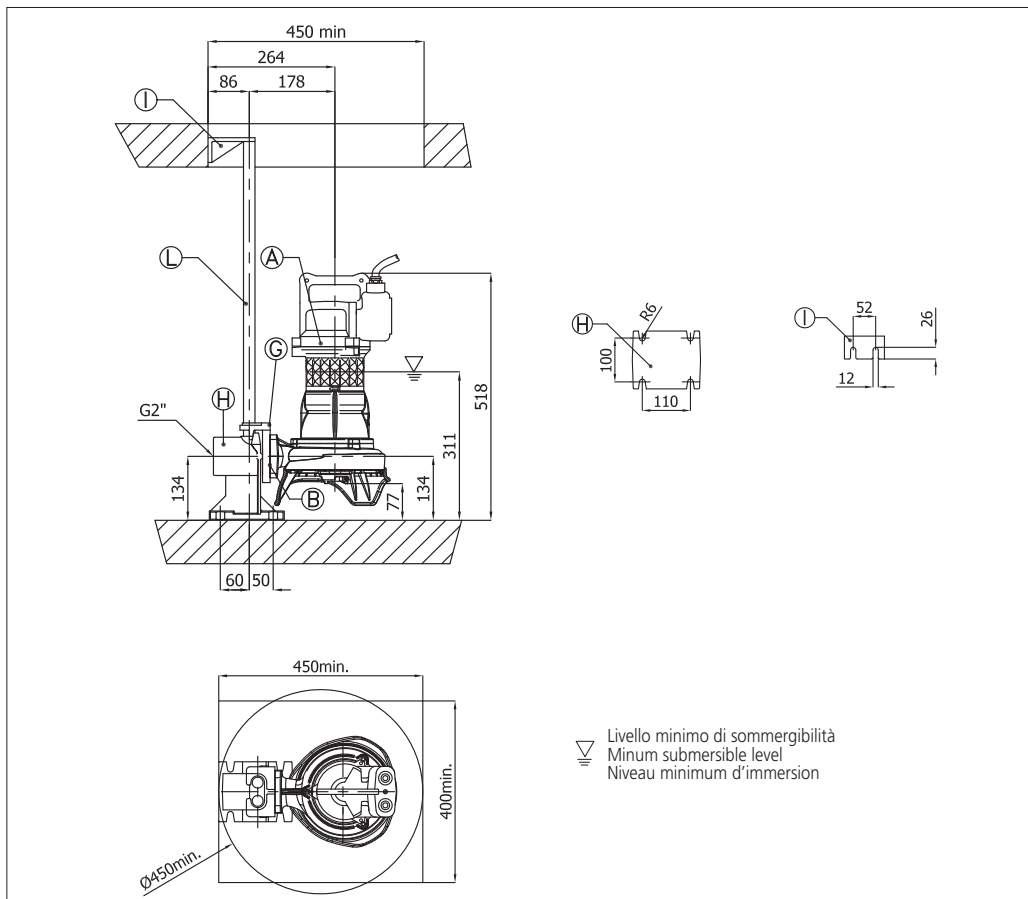
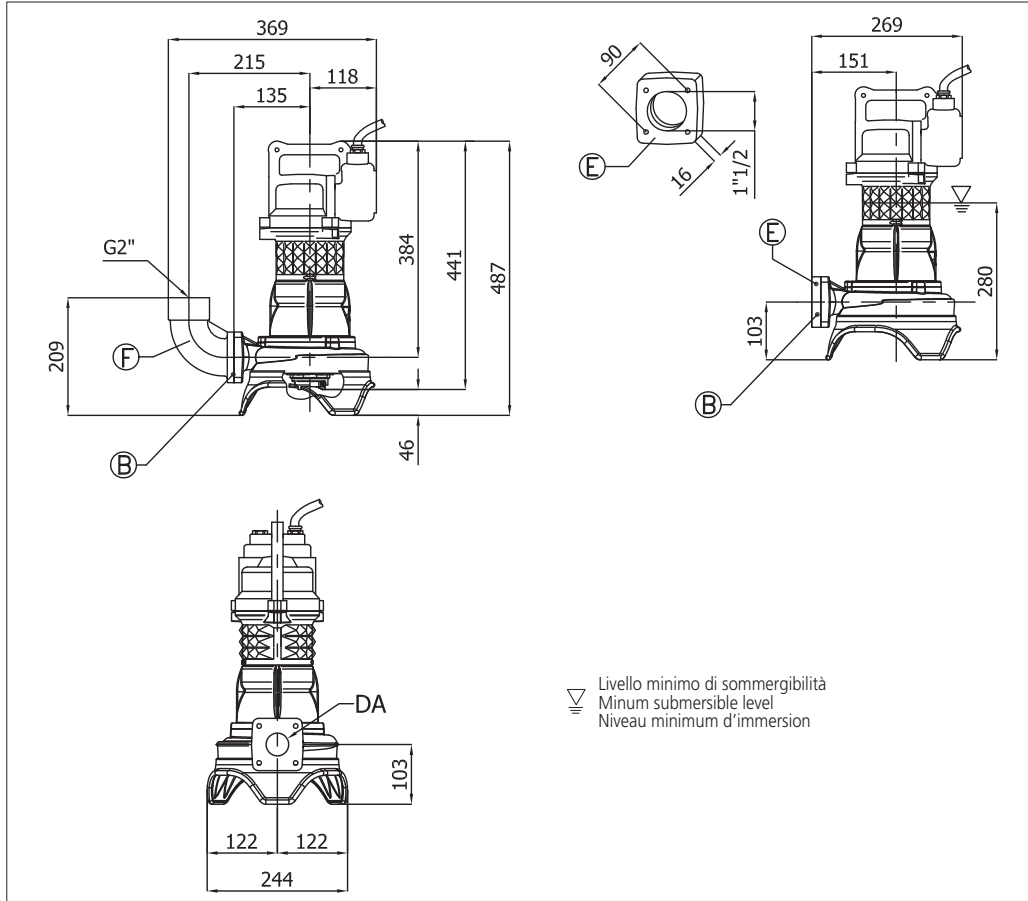
Peso Weight Poids	40 kg	Costruzione Construction Construction	GHISA CAST IRON FONTE
-------------------------	--------------	---	--------------------------------------

MOTORE • MOTOR • MOTEUR

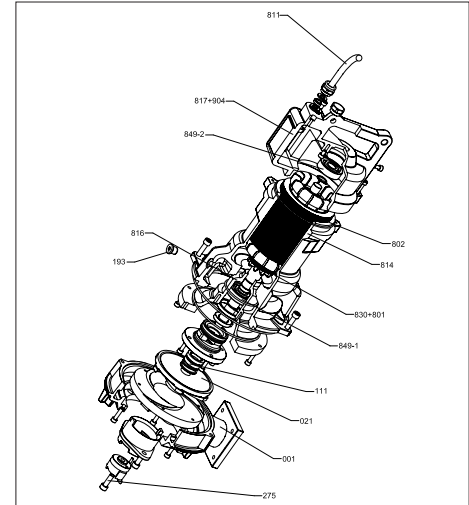
Tensione Power Tension	400V ±10%, 50 Hz	Cavo Cable Câble	10 m
Avviamento ora Starts per hour Nombre de démarrages par huere	15	P ₂	1.4 kW
Classe di isolamento Insulation class Classe d'isolation	H	Corrente di avviamento Start Current Ampérage au démarrage	14 A
Grado di protezione Protection degree Indice de protection	IP 68	Corrente 100% Current 100% Ampérage 100%	3,5 A
		Velocità di rotazione (rpm) Rotation speed (rpm) Vitesse de rotation (rpm)	2850



DIMENSIONI • DIMENSIONS • DIMENSIONS



RICAMBI • REPLACEMENT PARTS • PIÈCES DE RECHANGE



KIT RIPARAZIONE ORDINARIA:

O-ring, Gommini, Tenute meccaniche
Paraolio, Rosette tappo olio

ORDINARY REPAIR KIT: O-ring, Glands, Mechanical seals, Lip seals, Oil plug washers

KIT DE RÉPARATION ORDINAIRE:

Joint torique, Bouchon caoutchouc, Garniture mécanique, Joint à lèvres, Bouchon pour chambre à huile



KIT RIPARAZIONE COMPLETA:

O-ring, Gommini, Tenute meccaniche, Paraolio, Rosette tappo olio, Anelli cromati, Cavo elettrico, Molla precarico, Cuscinetti, Anelli seeger

COMPLETE REPAIR KIT: O-ring, Glands, Mechanical seals, Lip seals, Oil plug washers, Chromate rings, Electric cable, Pre-loading spring, Bearings, Circlips

KIT REPARATION COMPLET:

Joint torique, Bouchon caoutchouc, Garniture mécanique, Joint à lèvres, Bouchon pour chambre à huile, Joint chromé, Cable électrique, Ressort, Roulement, Circlips



Anello tritratore
Grinder ring
Anneau couteau grinder

Tagliente tritratore
Cutting device
Couteau grinder

SELEZIONE QDC SELECTION QDC SÉLECTION QDC

Modello Kit scivolo discesa QDC Model Modèle Kit pied d'assise PA DN50	
Gomito/Curva di mandata Elbow Coude/courbe de sortie CUF 2"	
Controflange Counterflanges Contre-bridges FL 1" 1/2 T FL 2" FL2" 1/2	

TABELLA DIMENSIONI • DIMENSIONS TABLE • TABLEAU DE DIMENSIONS

DA	Modello • Model • Modèle	[kW]	Peso • Weight • Poids [kg]
40	DRS/A40-136-1.4	1.4	40



GRINDER

S.C. 07/13 DRS/A40-150-2.4

CURVE DI PRESTAZIONE • PERFORMANCE CURVES • COURBES DE PERFORMANCE

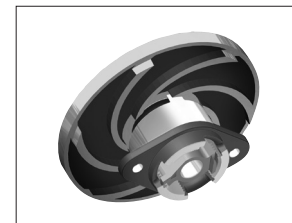
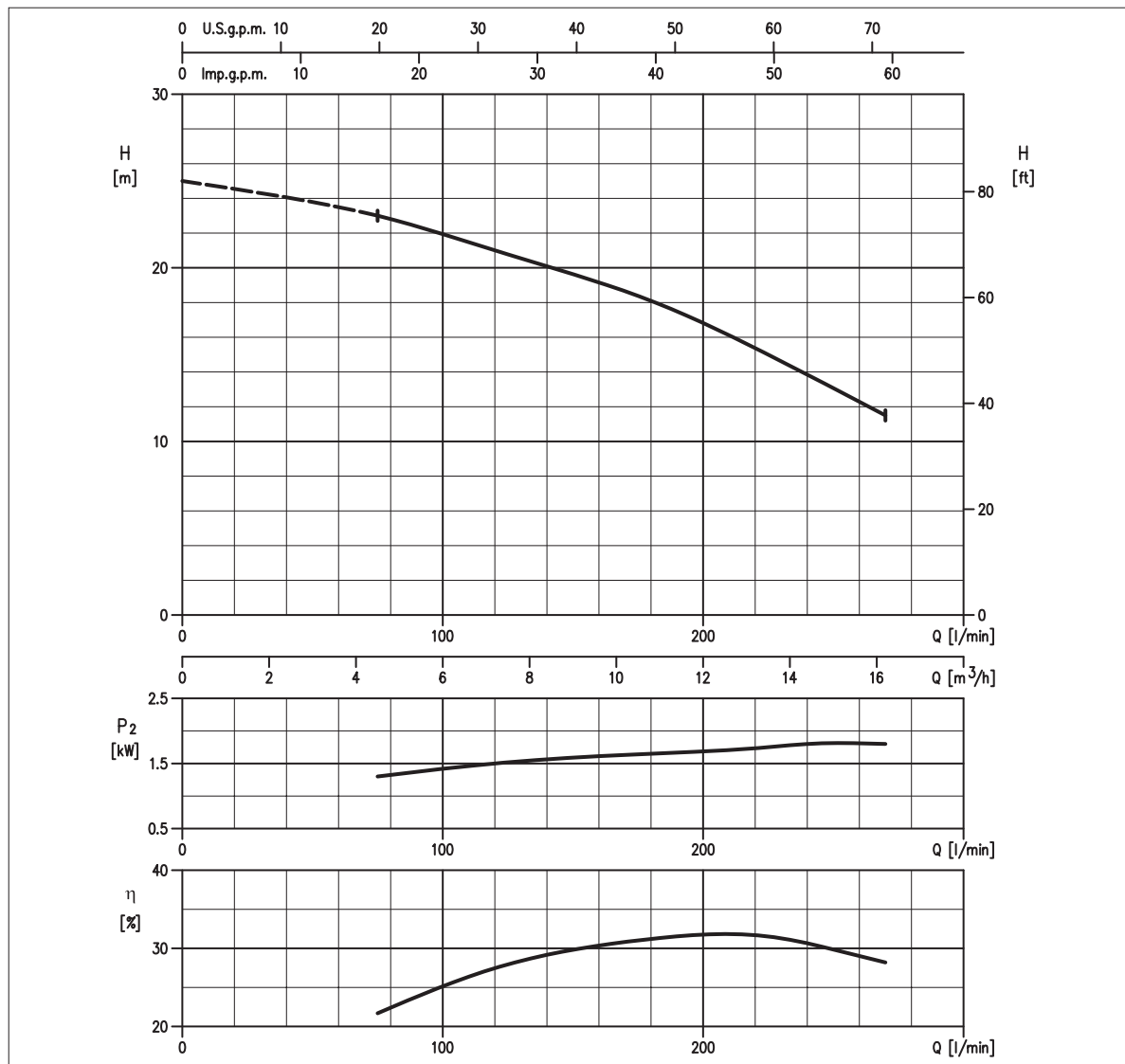


TABELLA PRESTAZIONI • PERFORMANCE TABLE • TABLEAU DE PERFORMANCES

Modello Model Modèle	P ₂		Q = Portata / Flow rate / Débit					
	[HP]	[kW]	l/min 75 m³/h 5	120 7	180 11	225 14	240 14	270 16
DRS/A40-150-2.4	3,2	2,4	23	21	17,5	15	13,9	11,5

H = Prevalenza / Head / Hauteur manometrique totale [m]

IDRAULICA • HYDRAULIC • HYDRAULIQUE

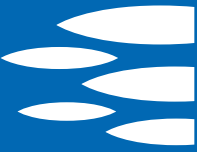
Girante Impeller Roue	GRINDER
Mandata Flanges Brides	DN 40 mm
Massimo diametro passaggi liberi Maximum solid diameter Passage libre maximum	-
Temperatura massima del liquido Maximum liquid temperature Température maximale du liquide	40°C
Tenuta meccanica Mechanical seal Garniture mécanique	Anello di tenuta in Nitrile (lato motore) SIC/SIC (lato girante) Lip seal in Nitrile (Motor side) SIC/SIC (Impeller side) Joint à lèvres en NBR (côté moteur) SIC/SIC (côté roue)

TIPO POMPA • PUMP TYPE • TYPE DE POMPE

Peso Weight Poids	40 kg	Costruzione Construction Construction	GHISA CAST IRON FONTE
-------------------------	--------------	---	--------------------------------------

MOTORE • MOTOR • MOTEUR

Tensione Power Tension	400V ±10%, 50 Hz	Cavo Cable Câble	10 m
Avviamento ora Starts per hour Nombre de démarrages par huere	15	P ₂	2.4 kW
Classe di isolamento Insulation class Classe d'isolation	H	Corrente di avviamento Start Current Ampérage au démarrage	21 A
Grado di protezione Protection degree Indice de protection	IP 68	Corrente 100% Current 100% Ampérage 100%	5 A
		Velocità di rotazione (rpm) Rotation speed (rpm) Vitesse de rotation (rpm)	2850



DIMENSIONI • DIMENSIONS • DIMENSIONS

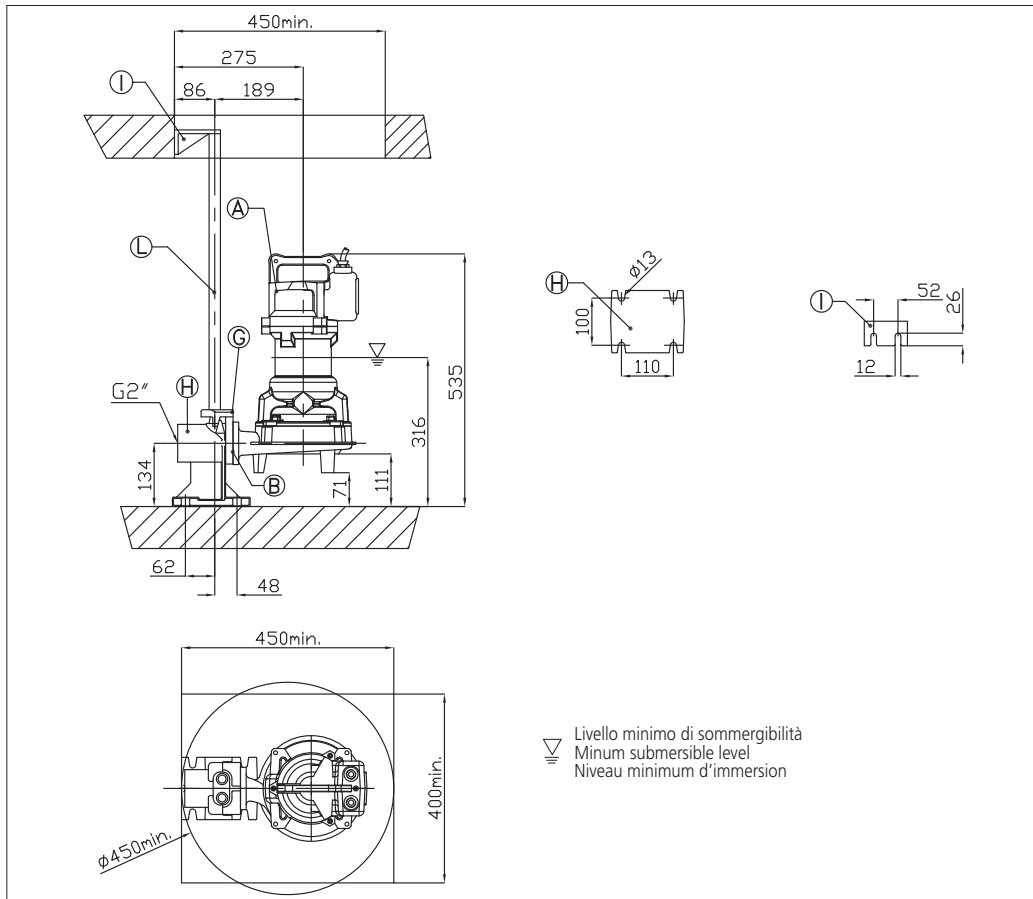
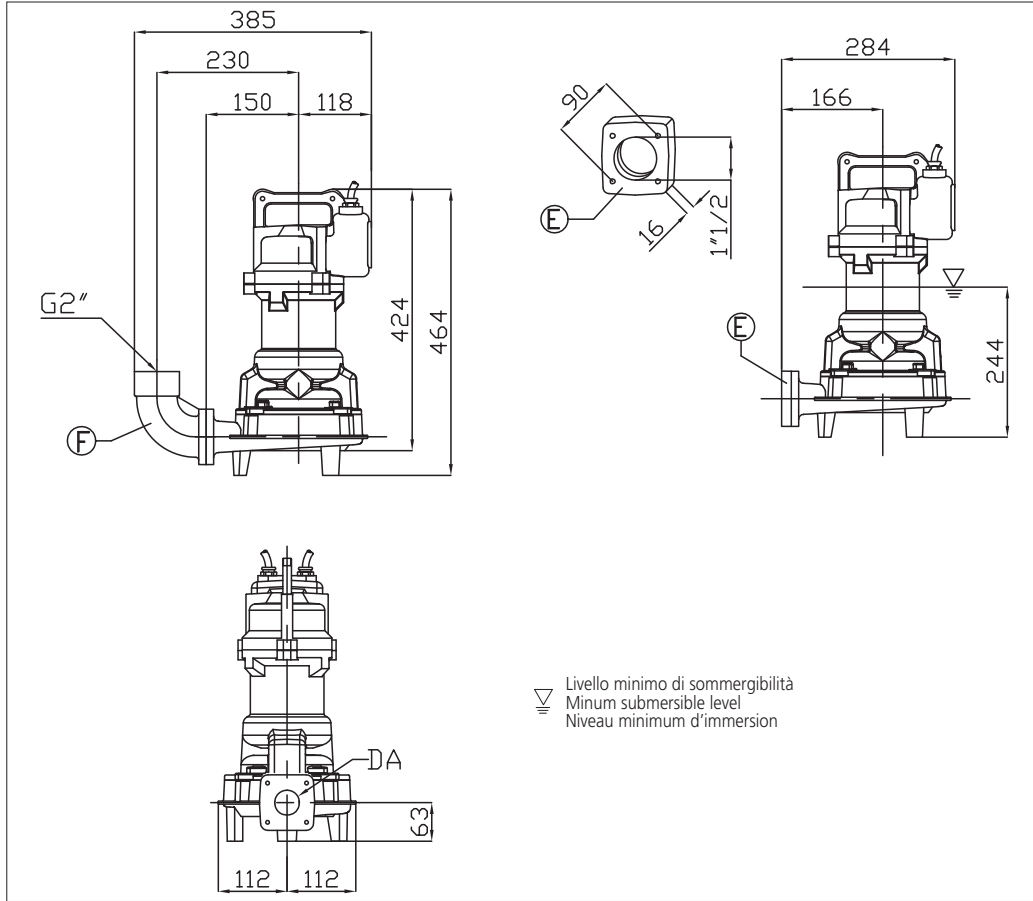
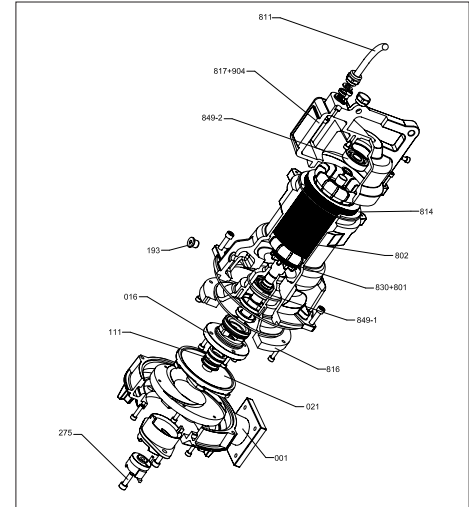


TABELLA DIMENSIONI • DIMENSIONS TABLE • TABLEAU DE DIMENSIONS

DA	Modello • Model • Modèle	[kW]	Peso • Weight • Poids [kg]
40	DRS/A40-150-2.4	2.4	40

RICAMBI • REPLACEMENT PARTS • PIÈCES DE RECHANGE



KIT RIPARAZIONE ORDINARIA:

O-ring, Gommmini, Tenute meccaniche
Paraolio, Rosette tappo olio

ORDINARY REPAIR KIT: O-ring, Glands, Mechanical seals, Lip seals, Oil plug washers

KIT DE RÉPARATION ORDINAIRE:

Joint torique, Bouchon caoutchouc, Garniture mécanique, Joint à lèvres, Bouchon pour chambre à huile



KIT RIPARAZIONE COMPLETA:

O-ring, Gommmini, Tenute meccaniche, Paraolio, Rosette tappo olio, Anelli cromati, Cavo elettrico, Molla precarico, Cuscinetti, Anelli seeger

COMPLETE REPAIR KIT: O-ring, Glands, Mechanical seals, Lip seals, Oil plug washers, Chromate rings, Electric cable, Pre-loading spring, Bearings, Circlips

KIT RIPARAZIONE COMPLET:

Joint torique, Bouchon caoutchouc, Garniture mécanique, Joint à lèvres, Bouchon pour chambre à huile, Joint chromé, Cable électrique, Ressort, Roulement, Circlips



Anello tritratore
Grinder ring
Anneau couteau grinder

Tagliente tritratore
Cutting device
Couteau grinder

SELEZIONE QDC SELECTION QDC SÉLECTION QDC

Modello Kit scivolo discesa QDC Model Modèle Kit pied d'assise PA DN50	
Gomito/Curva di mandata Elbow Coude/courbe de sortie CUF 2"	
Controflange Counterflanges Contre-bridges FL 1" 1/2 T FL 2" FL2" 1/2	



GRINDER

S.C. 12/12 DRS/A40-166-3.2

CURVE DI PRESTAZIONE • PERFORMANCE CURVES • COURBES DE PERFORMANCE

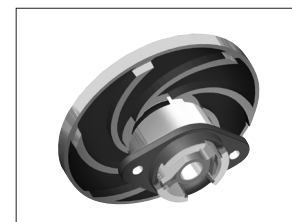
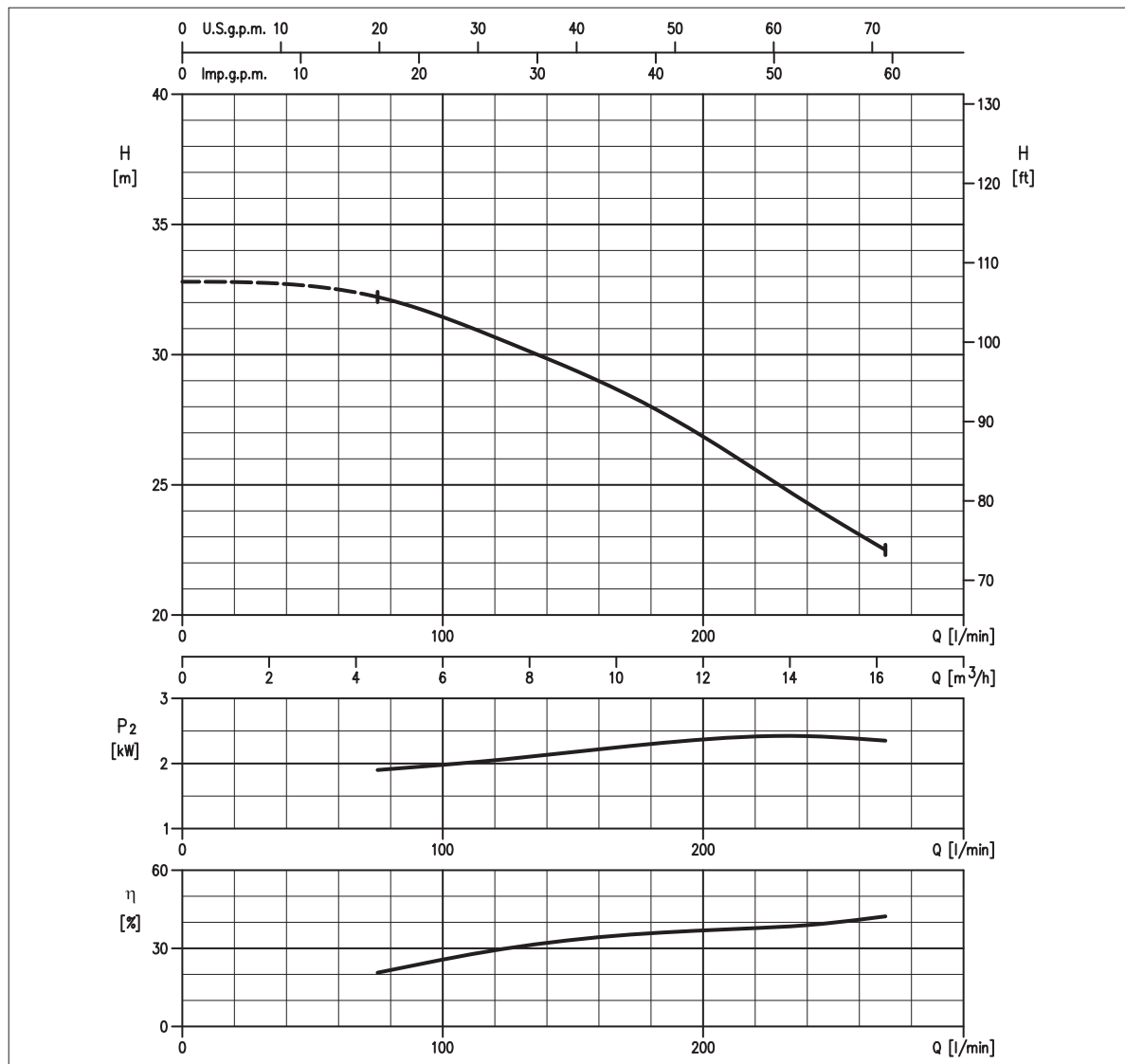


TABELLA PRESTAZIONI • PERFORMANCE TABLE • TABLEAU DE PERFORMANCES

Modello Model Modèle	P ₂		Q = Portata / Flow rate / Débit					
	[HP]	[kW]	l/min 75 m³/h 5	120 7	180 11	225 14	240 14	270 16
DRS/A40-166-3.2	4,5	3,2	32	30,6	28	25,4	24,4	22,5

H = Prevalenza / Head / Hauteur manométrique totale [m]

IDRAULICA • HYDRAULIC • HYDRAULIQUE

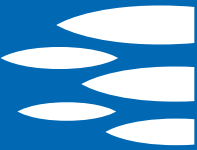
Girante Impeller Roue	GRINDER
Mandata Flanges Brides	DN 40 mm
Massimo diametro passaggi liberi Maximum solid diameter Passage libre maximum	-
Temperatura massima del liquido Maximum liquid temperature Température maximale du liquide	40°C
Doppia tenuta meccanica Double mechanical seal Double garniture mécanique	SiC/SiC/NBR Cer/Carb/NBR

TIPO POMPA • PUMP TYPE • TYPE DE POMPE

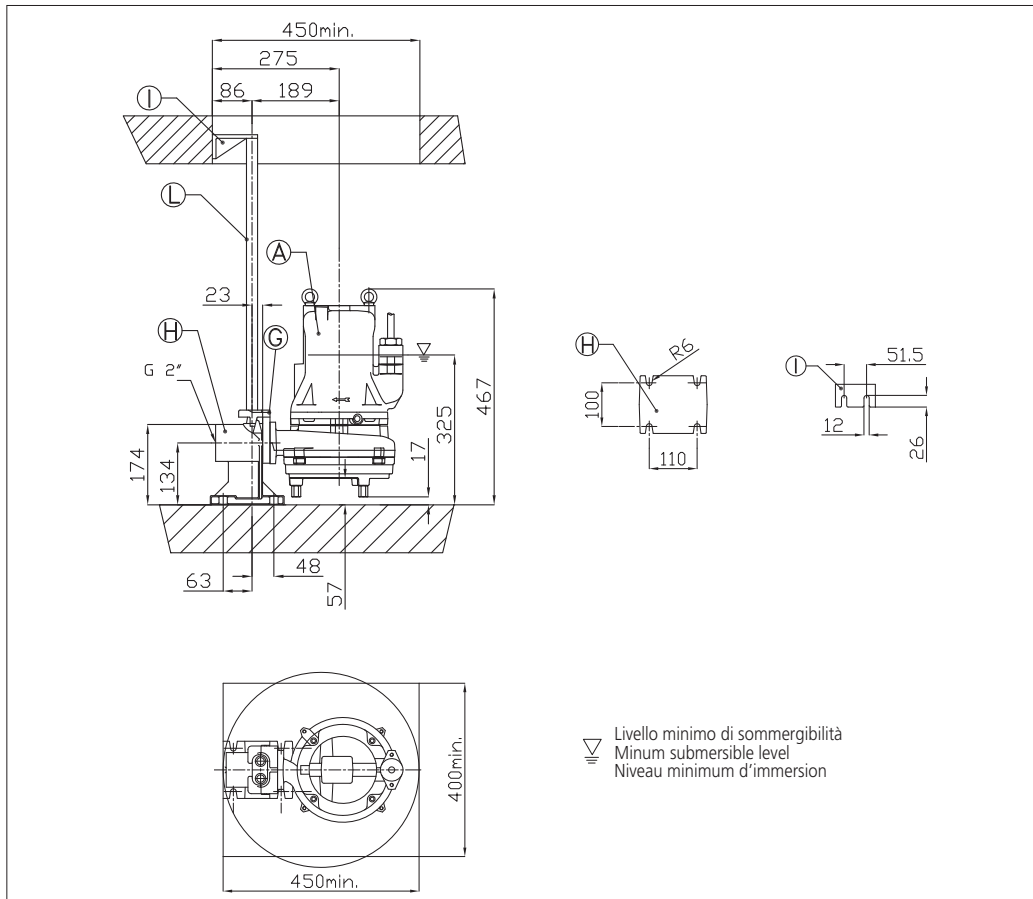
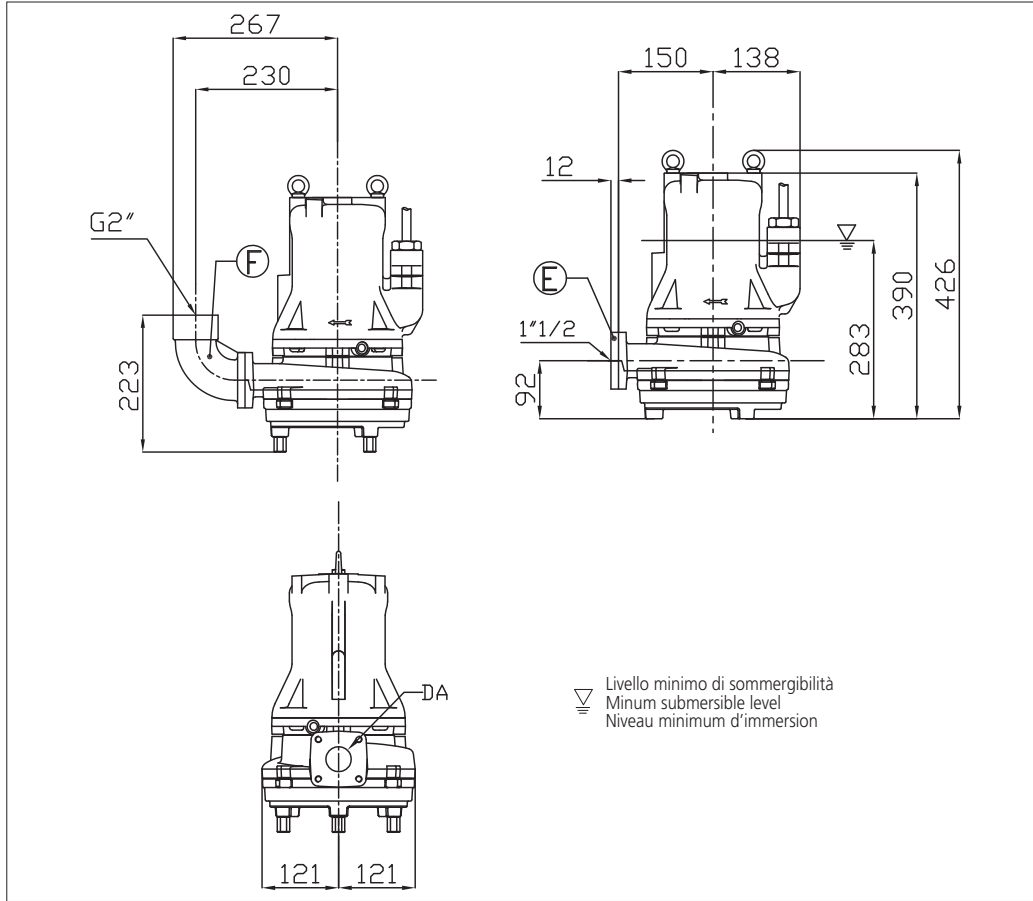
Peso Weight Poids	52 kg	Costruzione Construction Construction	GHISA CAST IRON FONTE
-------------------------	--------------	---	--------------------------------------

MOTORE • MOTOR • MOTEUR

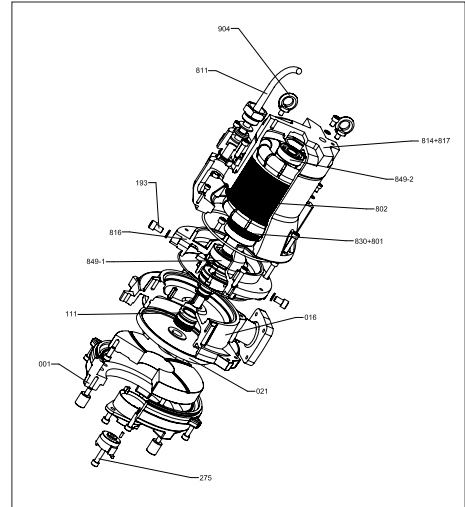
Tensione Power Tension	400V ±10%, 50 Hz	Cavo Cable Câble	10 m
Avviamento ora Starts per hour Nombre de démarrages par heure	15	P ₂	3,2 kW
Classe di isolamento Insulation class Classe d'isolation	H	Corrente di avviamento Start Current Ampérage au démarrage	31,9 A
Grado di protezione Protection degree Indice de protection	IP 68	Corrente 100% Current 100% Ampérage 100%	6,5 A
		Velocità di rotazione (rpm) Rotation speed (rpm) Vitesse de rotation (rpm)	2850



DIMENSIONI • DIMENSIONS • DIMENSIONS



RICAMBI • REPLACEMENT PARTS • PIÈCES DE RECHANGE



KIT RIPARAZIONE ORDINARIA:
 O-ring, Gommmini, Tenute meccaniche
 Paraolio, Rosette tappo olio
ORDINARY REPAIR KIT: O-ring,
 Glands, Mechanical seals, Lip seals, Oil
 plug washers
KIT DE RÉPARATION ORDINAIRE:
 Joint torique, Bouchon caoutchouc,
 Garniture mécanique, Joint à lèvres,
 Bouchon pour chambre à huile



KIT RIPARAZIONE COMPLETA:
 O-ring, Gommmini, Tenute meccaniche,
 Paraolio, Rosette tappo olio, Anelli
 cromati, Cavo elettrico, Molla
 precarico, Cuscinetti, Anelli seeger
COMPLETE REPAIR KIT: O-ring,
 Glands, Mechanical seals, Lip seals, Oil
 plug washers, Chromate rings, Electric
 cable, Pre-loading spring, Bearings,
 Circlips
KIT REPARATION COMPLET:
 Joint torique, Bouchon caoutchouc,
 Garniture mécanique, Joint à lèvres,
 Bouchon pour chambre à huile, Joint
 chromé, Cable électrique, Ressort,
 Roulement, Circlips



Anello tritratore
 Grinder ring
 Anneau couteau grinder
 Tagliante tritratore
 Cutting device
 Couteau grinder

**SELEZIONE QDC
SELECTION QDC
SÉLECTION QDC**

Modello Kit scivolo discesa QDC Model Modèle Kit pied d'assise PA DN50	
Gomito/Curva di mandata Elbow Coude/courbe de sortie CUF 2"	
Controflange Counterflanges Centre-bridges FL 1" 1/2 T FL 2" FL2" 1/2	

TABELLA DIMENSIONI • DIMENSIONS TABLE • TABLEAU DE DIMENSIONS

DA	Modello • Model • Modèle	[kW]	Peso • Weight • Poids [kg]
40	DRS/A40-166-3.2	3.2	52



GRINDER

S.C. 12/12 DRS/A40-172-4.1

CURVE DI PRESTAZIONE • PERFORMANCE CURVES • COURBES DE PERFORMANCE

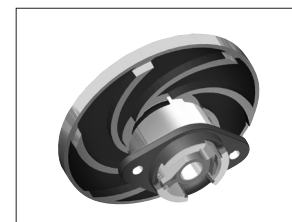
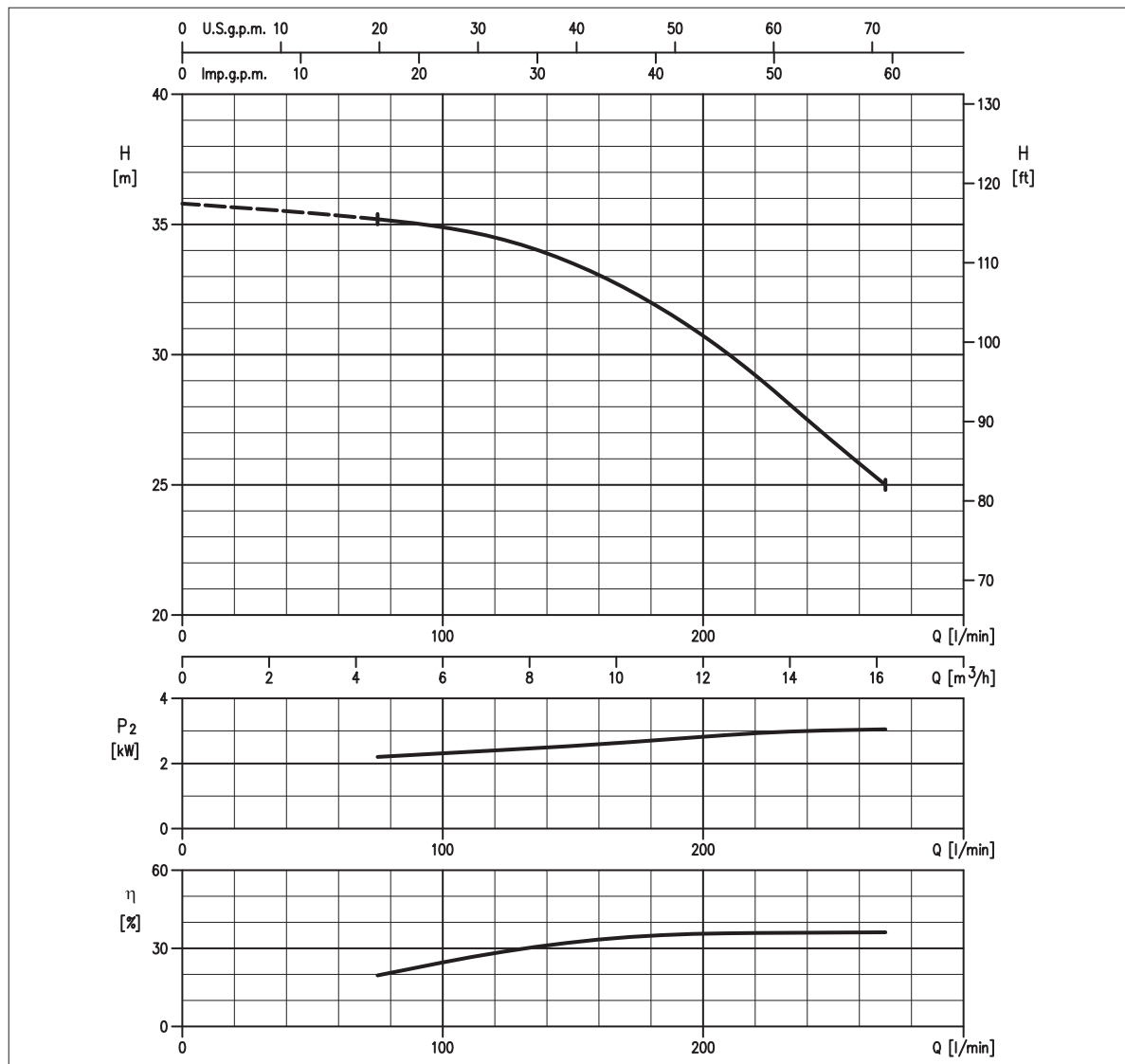


TABELLA PRESTAZIONI • PERFORMANCE TABLE • TABLEAU DE PERFORMANCES

Modello Model Modèle	P ₂		Q = Portata / Flow rate / Débit					
	[HP]	[kW]	l/min 75 m³/h 5	120 7	180 11	225 14	240 14	270 16
DRS/A40-172-4.1	5,5	4,1	35,2	34,5	32	29,6	28,1	25

H = Prevalenza / Head / Hauteur manometrique totale [m]

IDRAULICA • HYDRAULIC • HYDRAULIQUE

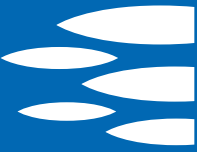
Girante Impeller Roue	GRINDER
Mandata Flanges Brides	DN 40 mm
Massimo diametro passaggi liberi Maximum solid diameter Passage libre maximum	-
Temperatura massima del liquido Maximum liquid temperature Température maximale du liquide	40°C
Doppia tenuta meccanica Double mechanical seal Double garniture mécanique	SiC/SiC/NBR Cer/Carb/NBR

TIPO POMPA • PUMP TYPE • TYPE DE POMPE

Peso Weight Poids	66 kg	Costruzione Construction Construction	GHISA CAST IRON FONTE
-------------------------	--------------	---	--------------------------------------

MOTORE • MOTOR • MOTEUR

Tensione Power Tension	400 - 690V ±10%, 50 Hz	Cavo Cable Câble	10 m
Avviamento ora Starts per hour Nombre de démarrages par huere	15	P ₂	4,1 kW
Classe di isolamento Insulation class Classe d'isolation	H	Corrente di avviamento Start Current Ampérage au démarrage	51,9 A
Grado di protezione Protection degree Indice de protection	IP 68	Corrente 100% Current 100% Ampérage 100%	88 A
		Velocità di rotazione (rpm) Rotation speed (rpm) Vitesse de rotation (rpm)	2850



DIMENSIONI • DIMENSIONS • DIMENSIONS

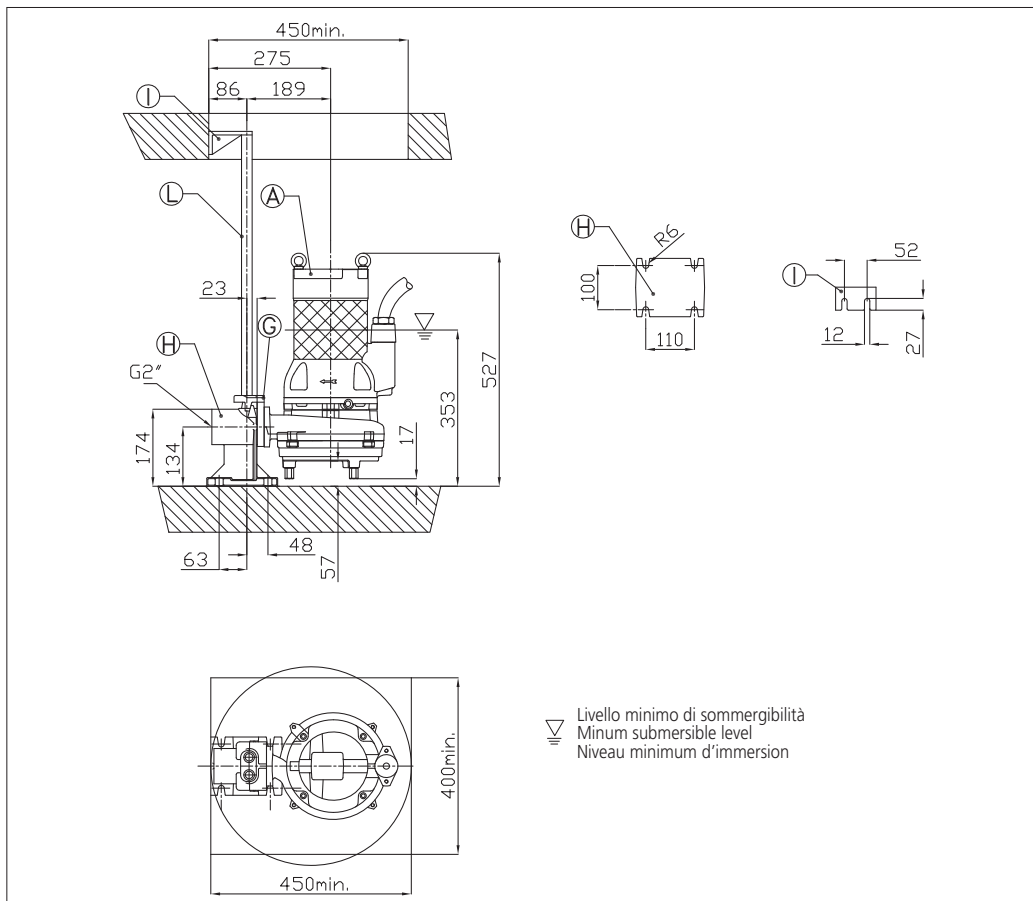
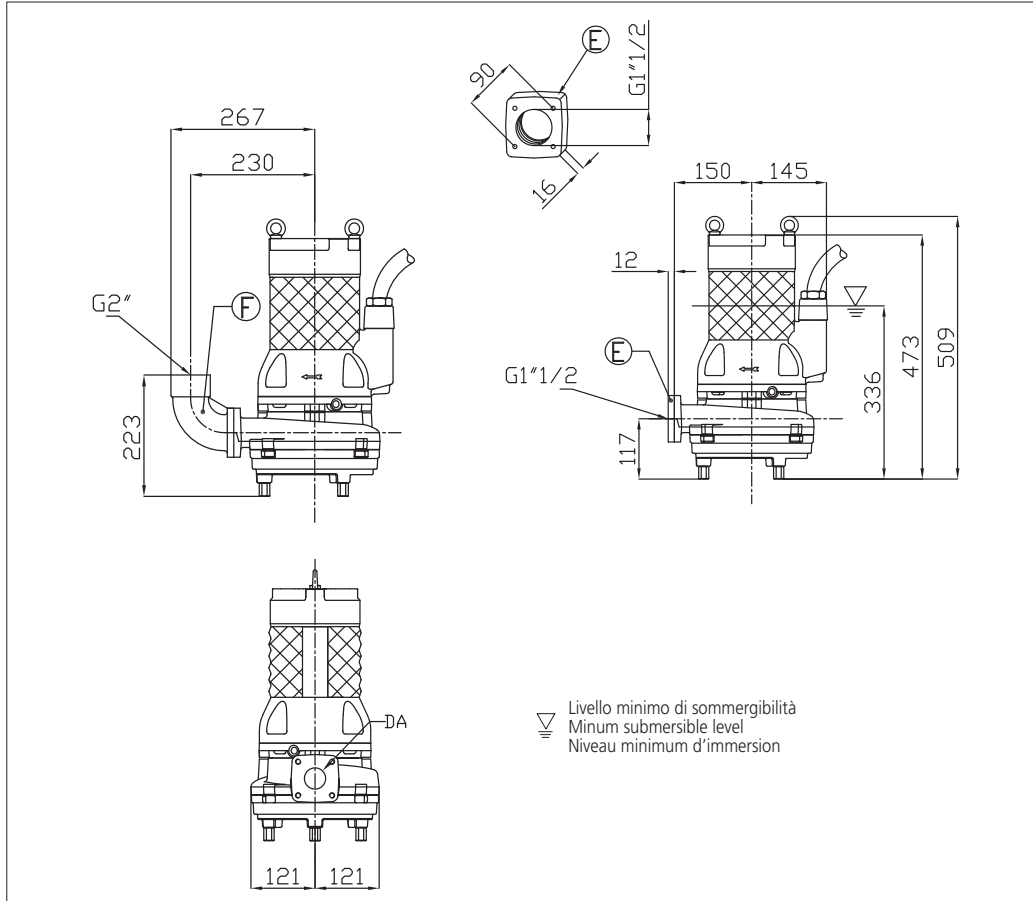
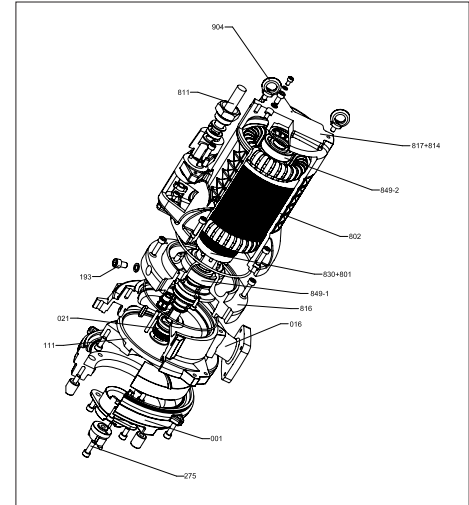


TABELLA DIMENSIONI • DIMENSIONS TABLE • TABLEAU DE DIMENSIONS

DA	Modello • Model • Modèle	[kW]	Peso • Weight • Poids [kg]
40	DRS/A40-172-4.1	4.1	66

RICAMBI • REPLACEMENT PARTS • PIÈCES DE RECHANGE



KIT RIPARAZIONE ORDINARIA:

O-ring, Gommmini, Tenute meccaniche
Paraolio, Rosette tappo olio
ORDINARY REPAIR KIT: O-ring, Glands, Mechanical seals, Lip seals, Oil plug washers

KIT DE RÉPARATION ORDINAIRE:

Joint torique, Bouchon caoutchouc, Garniture mécanique, Joint à lèvres, Bouchon pour chambre à huile



KIT RIPARAZIONE COMPLETA:

O-ring, Gommmini, Tenute meccaniche, Paraolio, Rosette tappo olio, Anelli cromati, Cavo elettrico, Molla precarico, Cuscinetti, Anelli seeger
COMPLETE REPAIR KIT: O-ring, Glands, Mechanical seals, Lip seals, Oil plug washers, Chromate rings, Electric cable, Pre-loading spring, Bearings, Circlips

KIT REPARATION COMPLET:

Joint torique, Bouchon caoutchouc, Garniture mécanique, Joint à lèvres, Bouchon pour chambre à huile, Joint chromé, Cable électrique, Ressort, Roulement, Circlips



Anello tritratore
Grinder ring
Anneau couteau grinder

Tagliante tritratore
Cutting device
Couteau grinder

**SELEZIONE QDC
SELECTION QDC
SÉLECTION QDC**

Modello Kit scivolo discesa QDC Model Modèle Kit pied d'assise PA DN50	
Gomito/Curva di mandata Elbow Coude/courbe de sortie CUF 2"	
Controflange Counterflanges Contre-bridges FL 1" 1/2 T FL 2" FL2" 1/2	

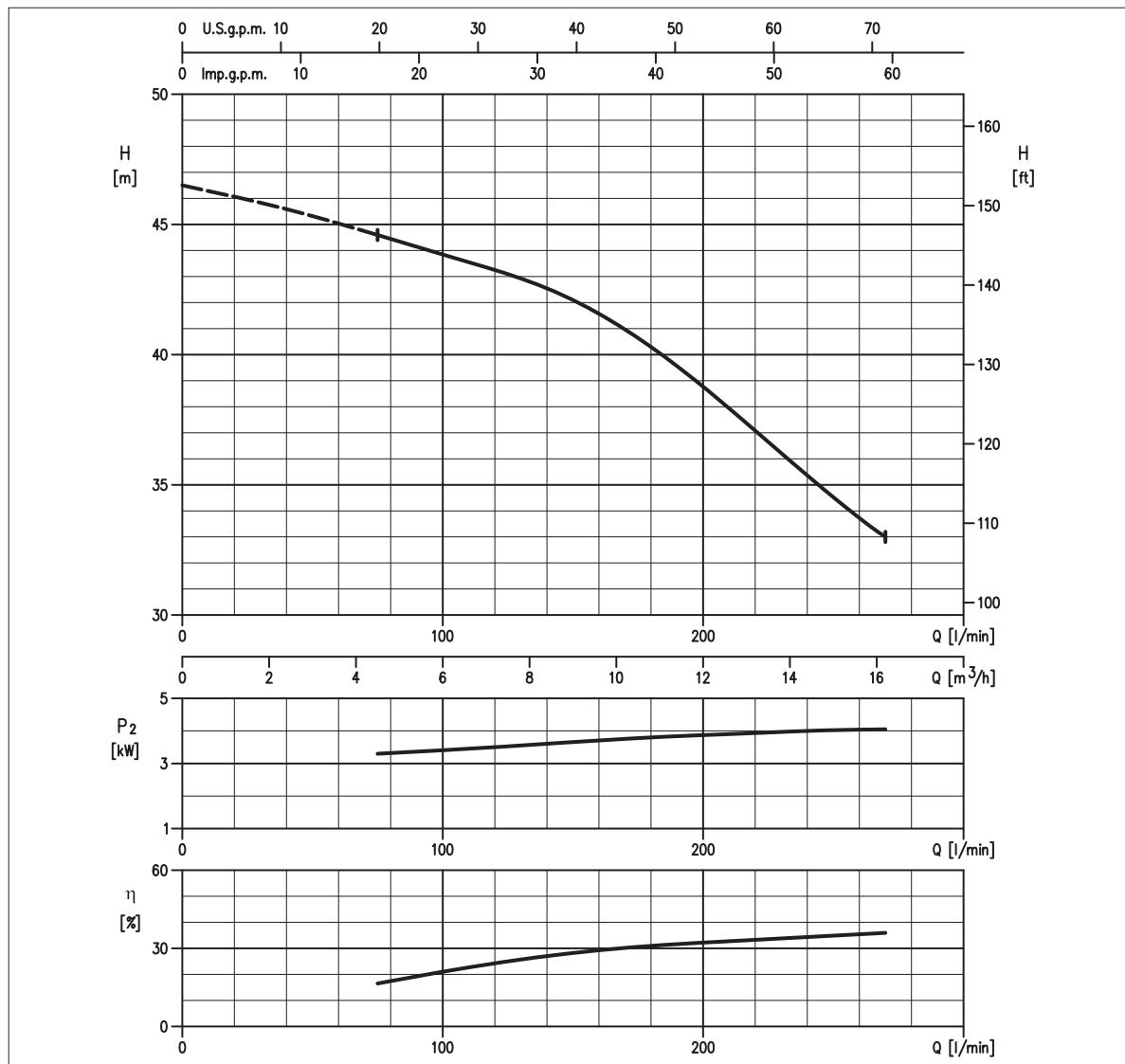

GRINDER
motralec

S.C. 12/12 DRS/A40-192-5.0

4 rue Lavoisier . ZA Lavoisier . 95223 HERBLAY CEDEX

Tel. : 01.39.97.65.10 / Fax. : 01.39.97.68.48

Demande de prix / e-mail : service-commercial@motralec.com

www.motralec.com
CURVE DI PRESTAZIONE • PERFORMANCE CURVES • COURBES DE PERFORMANCE

TABELLA PRESTAZIONI • PERFORMANCE TABLE • TABLEAU DE PERFORMANCES

Modello Model Modèle	P ₂		Q = Portata / Flow rate / Débit					
	[HP]	[kW]	l/min 75 m³/h 5	120 7	180 11	225 14	240 14	270 16
DRS/A40-192-5.0	7	5	44,5	43,5	40	37	35,9	33

H = Prevalenza / Head / Hauteur manométrique totale [m]

IDRAULICA • HYDRAULIC • HYDRAULIQUE

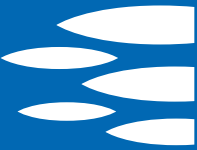
Girante Impeller Roue	GRINDER
Mandata Flanges Brides	DN 40 mm
Massimo diametro passaggi liberi Maximum solid diameter Passage libre maximum	-
Temperatura massima del liquido Maximum liquid temperature Température maximale du liquide	40°C
Doppia tenuta meccanica Double mechanical seal Double garniture mécanique	SiC/SiC/NBR Cer/Carb/NBR

TIPO POMPA • PUMP TYPE • TYPE DE POMPE

Peso Weight Poids	66 kg	Costruzione Construction Construction	GHISA CAST IRON FONTE
-------------------------	--------------	---	--------------------------------------

MOTORE • MOTOR • MOTEUR

Tensione Power Tension	400 - 690V ±10%, 50 Hz	Cavo Cable Câble	10 m
Avviamento ora Starts per hour Nombre de démarrages par huere	15	P ₂	5.0 kW
Classe di isolamento Insulation class Classe d'isolation	H	Corrente di avviamento Start Current Ampérage au démarrage	64,9 A
Grado di protezione Protection degree Indice de protection	IP 68	Corrente 100% Current 100% Ampérage 100%	11 A
		Velocità di rotazione (rpm) Rotation speed (rpm) Vitesse de rotation (rpm)	2850



DIMENSIONI • DIMENSIONS • DIMENSIONS

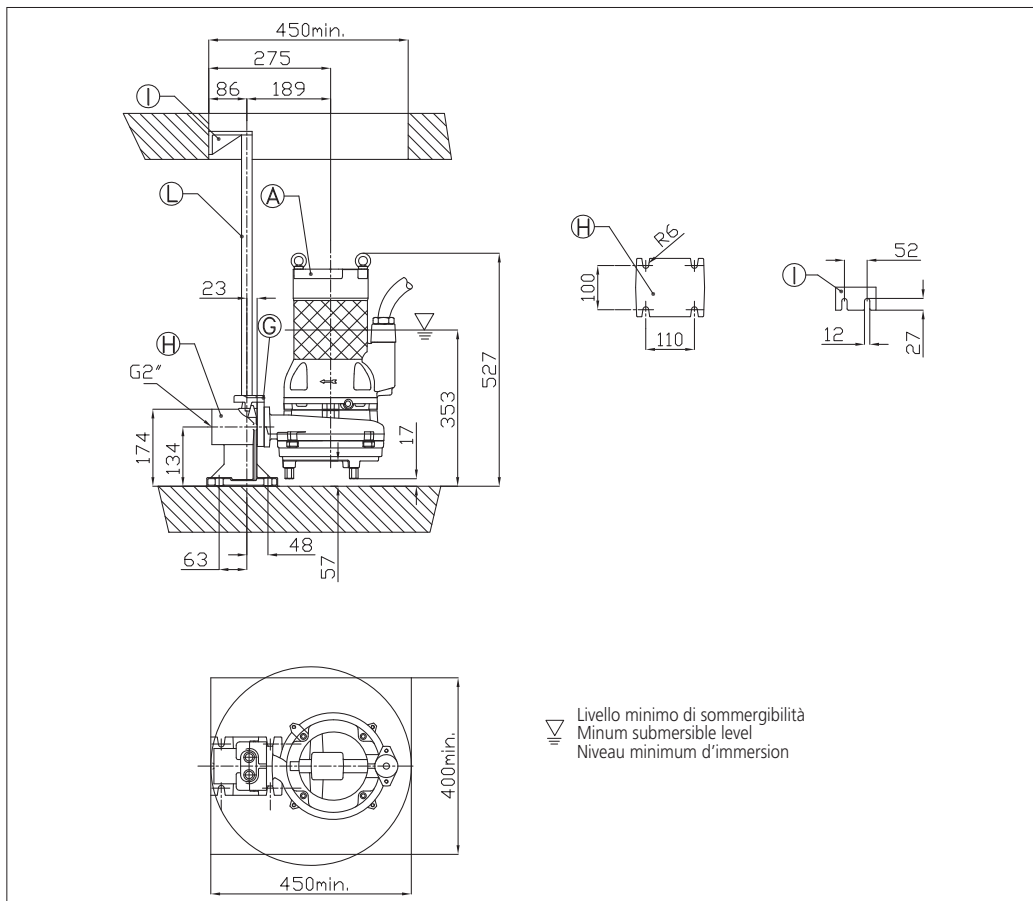
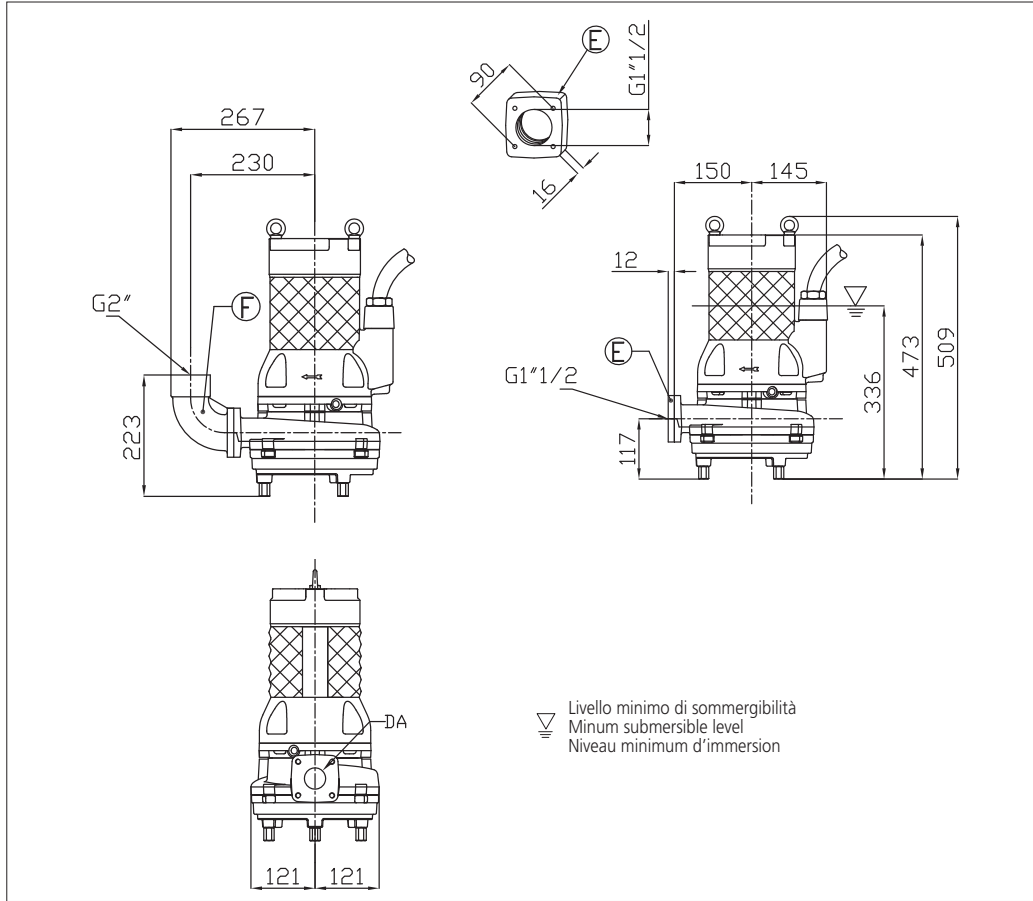
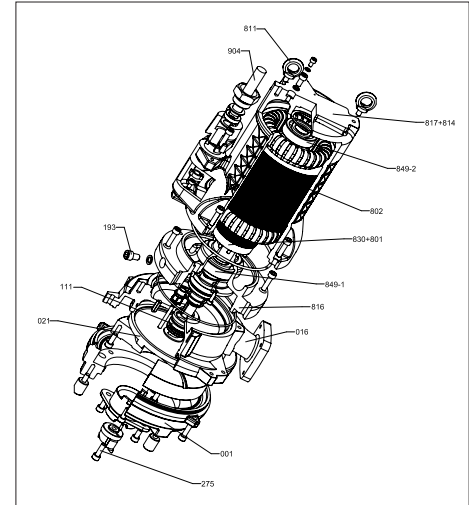


TABELLA DIMENSIONI • DIMENSIONS TABLE • TABLEAU DE DIMENSIONS

DA	Modello • Model • Modèle	[kW]	Peso • Weight • Poids [kg]
40	DRS/A40-192-5.0	5	66

RICAMBI • REPLACEMENT PARTS • PIÈCES DE RECHANGE



KIT RIPARAZIONE ORDINARIA:

O-ring, Gommmini, Tenute meccaniche
Paraolio, Rosette tappo olio
ORDINARY REPAIR KIT: O-ring, Glands, Mechanical seals, Lip seals, Oil plug washers

KIT DE RÉPARATION ORDINAIRE:

Joint torique, Bouchon caoutchouc, Garniture mécanique, Joint à lèvres, Bouchon pour chambre à huile



KIT RIPARAZIONE COMPLETA:

O-ring, Gommmini, Tenute meccaniche, Paraolio, Rosette tappo olio, Anelli cromati, Cavo elettrico, Molla precarico, Cuscinetti, Anelli seeger
COMPLETE REPAIR KIT: O-ring, Glands, Mechanical seals, Lip seals, Oil plug washers, Chromate rings, Electric cable, Pre-loading spring, Bearings, Circlips

KIT REPARATION COMPLET:

Joint torique, Bouchon caoutchouc, Garniture mécanique, Joint à lèvres, Bouchon pour chambre à huile, Joint chromé, Cable électrique, Ressort, Roulement, Circlips



Anello tritratore
Grinder ring
Anneau couteau grinder

Tagliente tritratore
Cutting device
Couteau grinder

**SELEZIONE QDC
SELECTION QDC
SÉLECTION QDC**

Modello Kit scivolo discesa QDC Model Modèle Kit pied d'assise PA DN50	
Gomito/Curva di mandata Elbow Coude/courbe de sortie CUF 2"	
Controflange Counterflanges Contre-brides FL 1" 1/2 T FL 2" FL2" 1/2	