

GIRANTE SEMI-APERTA A RASAMENTO SEMI-OPEN IMPELLER ROUE SEMI-OUVERTE

CURVE DI PRESTAZIONE • PERFORMANCE CURVES • COURBES DE PERFORMANCE

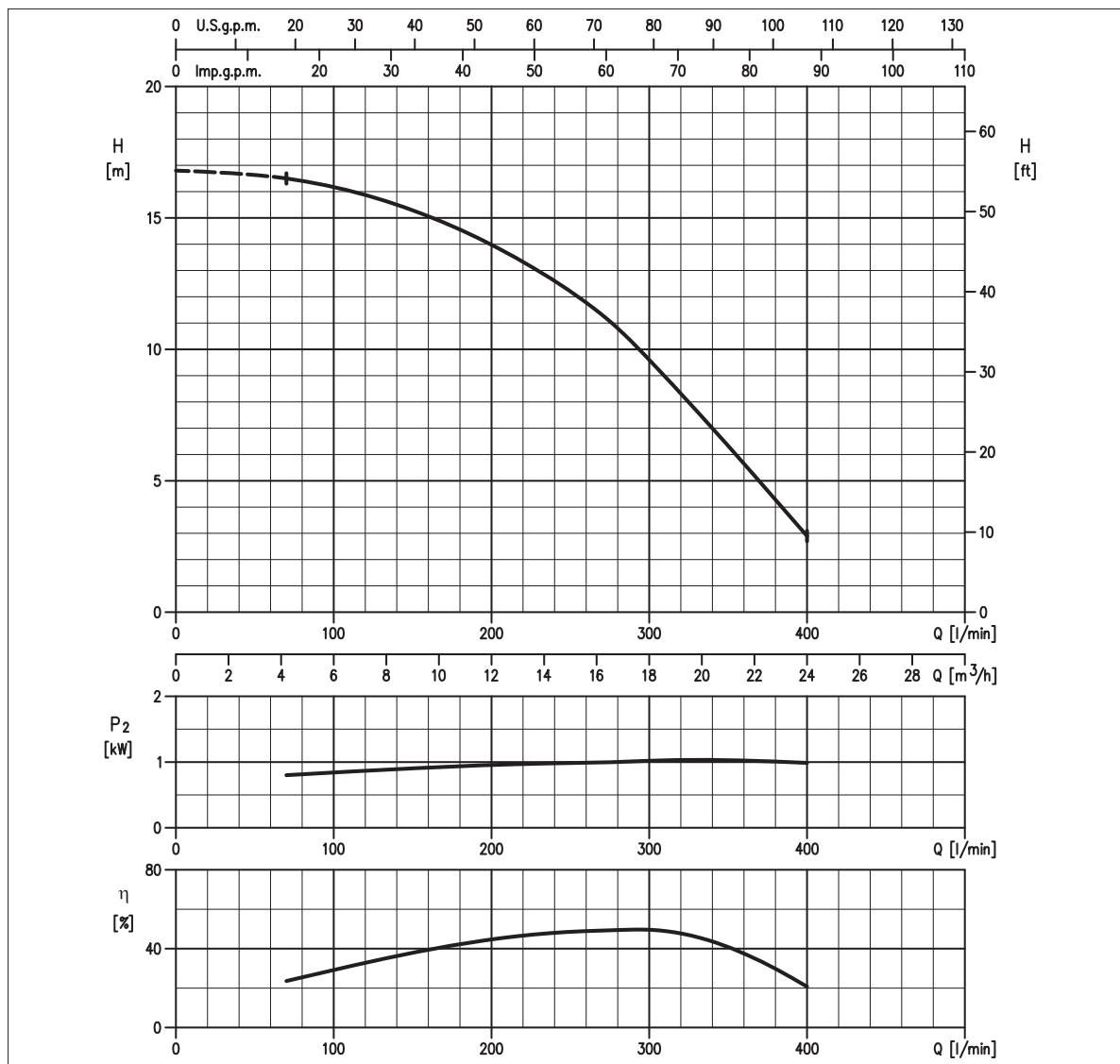


TABELLA PRESTAZIONI • PERFORMANCE TABLE • TABLEAU DE PERFORMANCES

Modello Model Modèle	P ₂		Q = Portata / Flow rate / Débit																					
	[HP]	[kW]	l/min 70 m³/h 4	100	150	200	250	300	400	450	473	500	550	580	600	700	800	950	1000	1170	1200	1250	1400	
40DSF51.1M	1,5	1,1	16,5	16,1	15,3	14,1	12	9,2	2,5	-	-	-	-	-	-	-	-	-	-	-	-	-	-	-

H = Prevalenza / Head / Hauteur manometrique totale [m]

IDRAULICA • HYDRAULIC • HYDRAULIQUE

Girante Impeller Roue	SEMI-APERTA SEMI-OPEN SEMI-OUVERTE
Mandata Flanges Brides	DN 40 mm
Massimo diametro passaggi liberi Maximum solid diameter Passage libre maximum	6 mm
Temperatura massima del liquido Maximum liquid temperature Température maximale du liquide	40°C
Doppia tenuta meccanica Double mechanical seal Double garniture mécanique	SiC/SiC/NBR Carb/Cer/NBR

TIPO POMPA • PUMP TYPE • TYPE DE POMPE

Peso Weight Poids	38 kg	Costruzione Construction Construction	GHISA CAST IRON FONTE
-------------------------	--------------	---	--------------------------------------

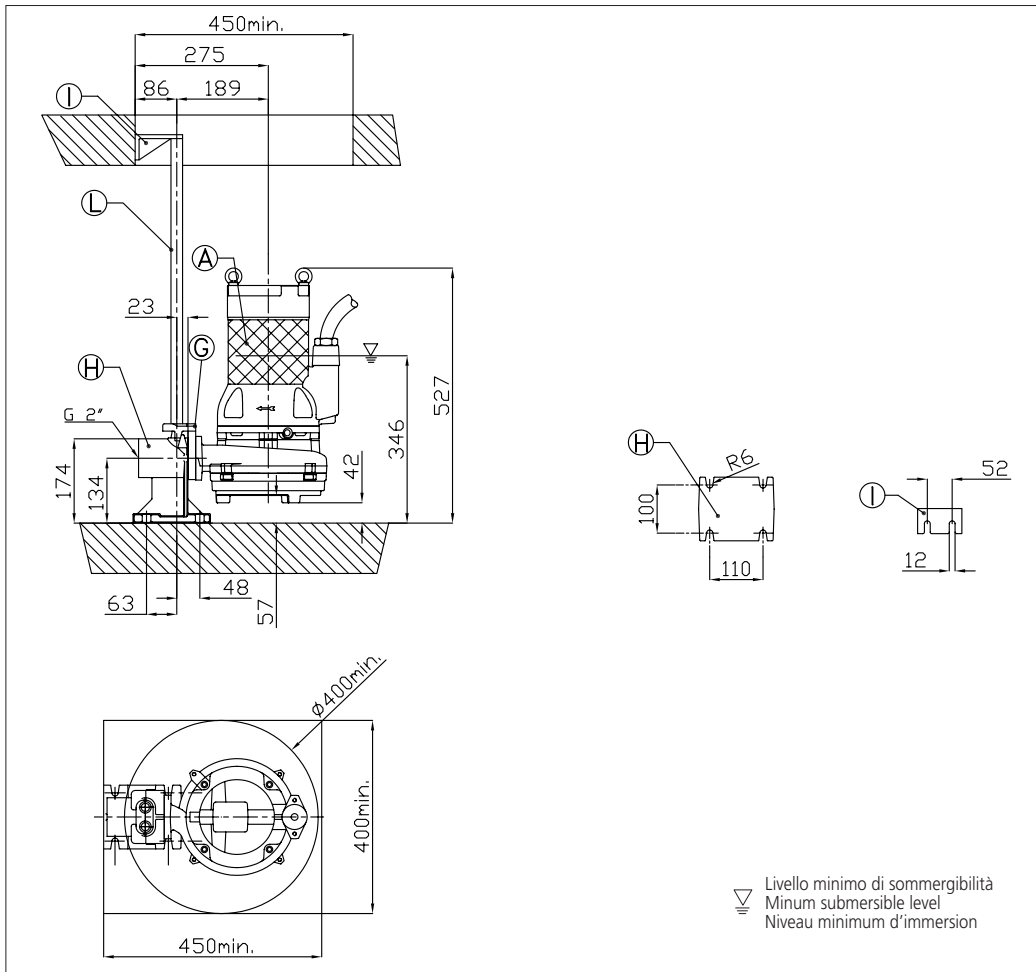
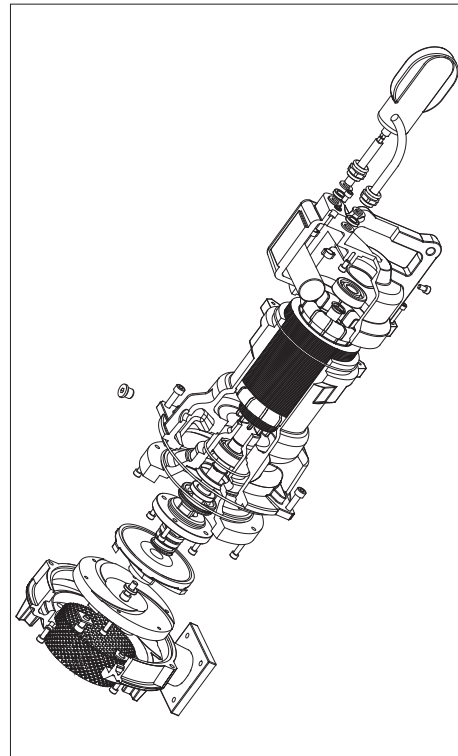
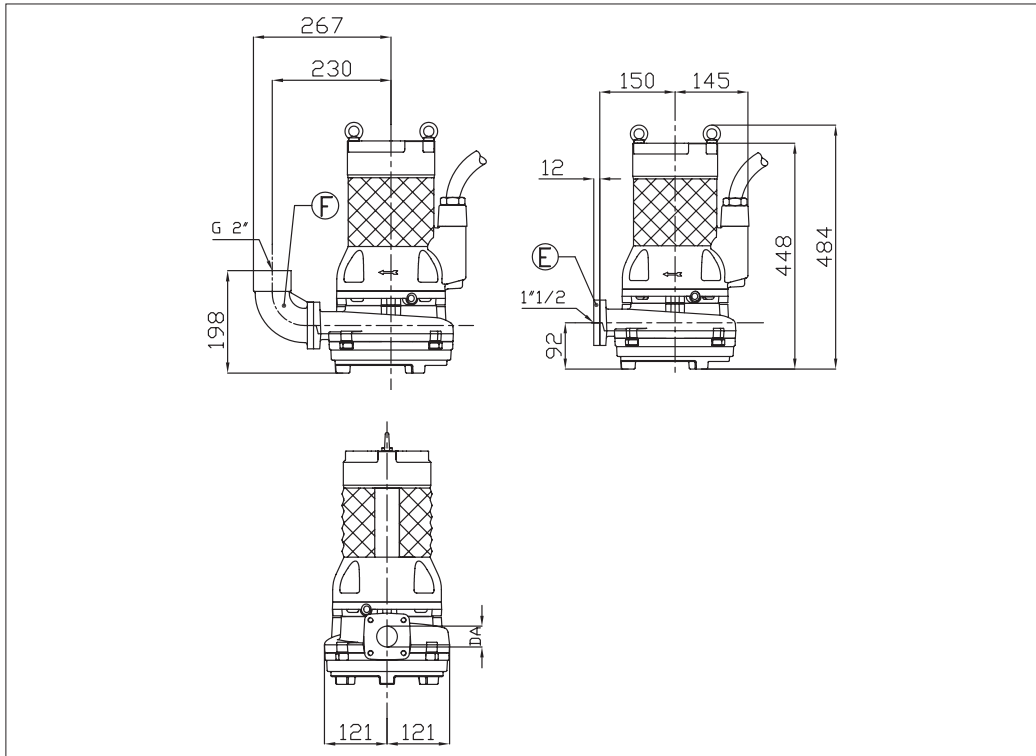
MOTORE • MOTOR • MOTEUR

Tensione Power Tension	230V ±10% 50 Hz	Cavo Cable Câble	10 m
Avviamento ora Starts per hour Nombre de démarrages par huere	15	P ₂	1.1 kW
Classe di isolamento Insulation class Classe d'isolation	H	Corrente di avviamento Start Current Ampérage au démarrage	21 A
Grado di protezione Protection degree Indice de protection	IP 68	Corrente 100% Current 100% Ampérage 100%	7.5 A
		Velocità di rotazione (rpm) Rotation speed (rpm) Vitesse de rotation (rpm)	2850



DIMENSIONI • DIMENSIONS • DIMENSIONS

RICAMBI • REPLACEMENT PARTS • PIÈCES DE RECHANGE



<p>KIT RIPARAZIONE ORDINARIA: O-ring, Gommini, Tenute meccaniche Paraolio, Rosette tappo olio ORDINARY REPAIR KIT: O-ring, Glands, Mechanical seals, Lip seals, Oil plug washers KIT DE RÉPARATION ORDINAIRE: Joint torique, Bouchon caoutchouc, Garniture mécanique, Joint à lèvres, Bouchon pour chambre à huile</p>	
<p>KIT RIPARAZIONE COMPLETA: O-ring, Gommini, Tenute meccaniche, Paraolio, Rosette tappo olio, Anelli cromati, Cavo elettrico, Molla precarico, Cuscinetti, Anelli seeger COMPLETE REPAIR KIT: O-ring, Glands, Mechanical seals, Lip seals, Oil plug washers, Chromate rings, Electric cable, Pre-loading spring, Bearings, Circlips KIT REPARATION COMPLET: Joint torique, Bouchon caoutchouc, Garniture mécanique, Joint à lèvres, Bouchon pour chambre à huile, Joint chromé, Cable électrique, Ressort, Roulement, Circlips</p>	
<p>Girante Impeller Roue</p>	<p>125 mm</p>

**SELEZIONE QDC
SELECTION QDC
SÉLECTION QDC**

<p>Modello Kit scivolo discesa QDC Model Modèle Kit pied d'assise PA DN50</p>	
<p>Gomito/Curva di mandata Elbow Coude/courbe de sortie CUF 2"</p>	
<p>Controflange Counterflanges Contre-brides FL 1" 1/2 T</p>	

TABELLA DIMENSIONI • DIMENSIONS TABLE • TABLEAU DE DIMENSIONS

DA	Modello • Model • Modèle	[kW]	Peso • Weight • Poids [kg]
40	40DSF51.1	1.1	38

▽ Livello minimo di sommersibilità
Minum submersible level
Niveau minimum d'immersion

GIRANTE SEMI-APERTA A RASAMENTO
SEMI-OPEN IMPELLER
ROUE SEMI-OUVERTE

CURVE DI PRESTAZIONE • PERFORMANCE CURVES • COURBES DE PERFORMANCE

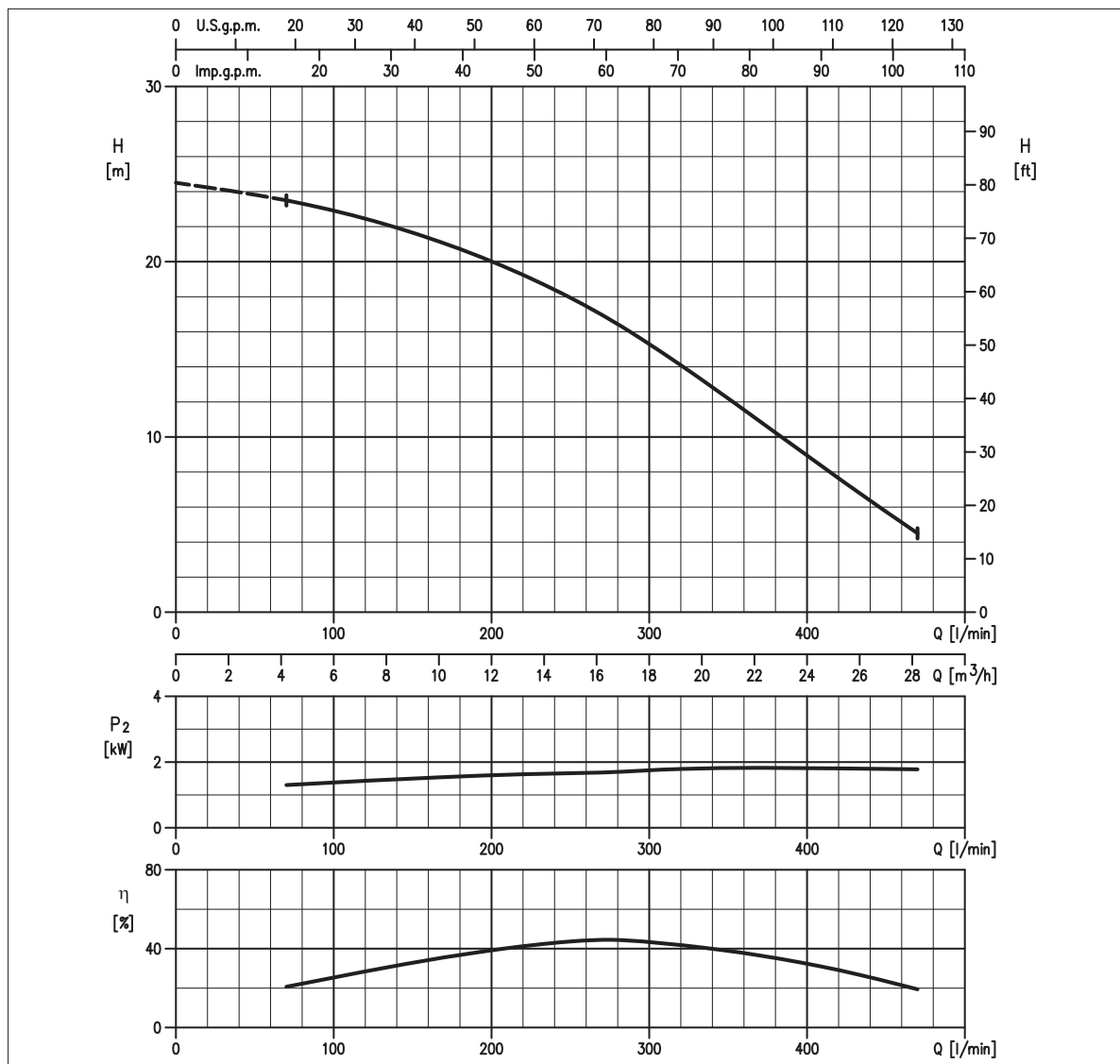


TABELLA PRESTAZIONI • PERFORMANCE TABLE • TABLEAU DE PERFORMANCES

Modello Model Modèle	P ₂		Q = Portata / Flow rate / Débit																				
	[HP]	[kW]	l/min 70 m³/h 4	100 6	150 9	200 12	250 15	300 18	400 24	450 27	473 28	500 30	550 33	580 35	600 36	700 42	800 48	950 57	1000 60	1170 70	1200 72	1250 75	1400 84
40DSF51.8M	2,5	1,1	23,8	23,2	22	20,3	18,3	15,3	9,5	6	4,5	-	-	-	-	-	-	-	-	-	-	-	-

H = Prevalenza / Head / Hauteur manométrique totale [m]

IDRAULICA • HYDRAULIC • HYDRAULIQUE

Girante Impeller Roue	SEMI-APERTA SEMI-OPEN SEMI-OUVERTE
Mandata Flanges Brides	DN 40 mm
Massimo diametro passaggi liberi Maximum solid diameter Passage libre maximum	6 mm
Temperatura massima del liquido Maximum liquid temperature Température maximale du liquide	40°C
Doppia tenuta meccanica Double mechanical seal Double garniture mécanique	SiC/SiC/NBR Carb/Cer/NBR

TIPO POMPA • PUMP TYPE • TYPE DE POMPE

Peso Weight Poids	38 kg	Costruzione Construction Construction	GHISA CAST IRON FONTE
-------------------------	--------------	---	--------------------------------------

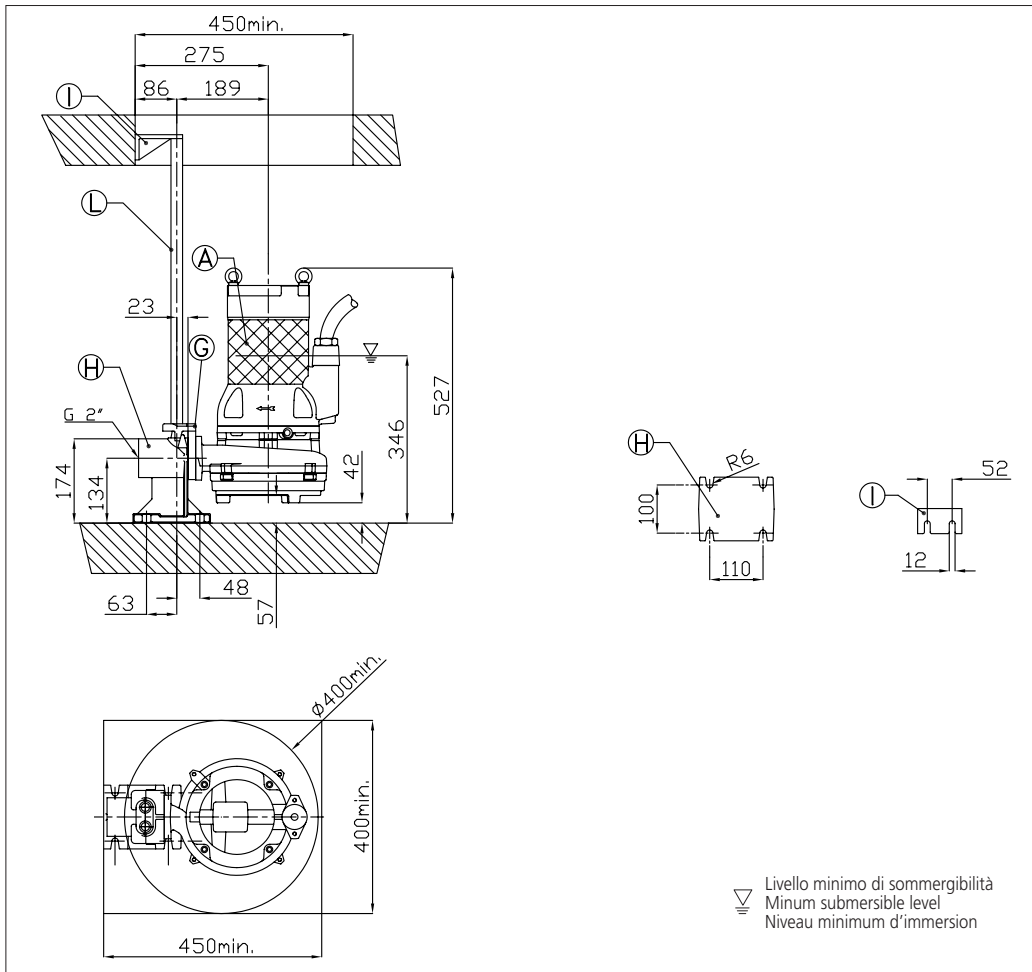
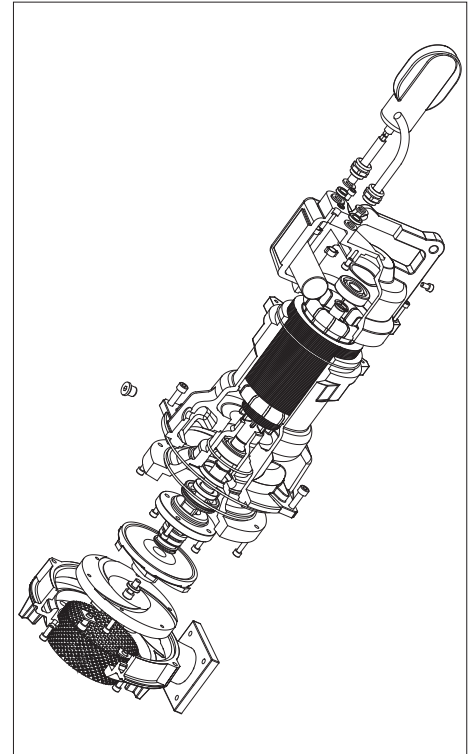
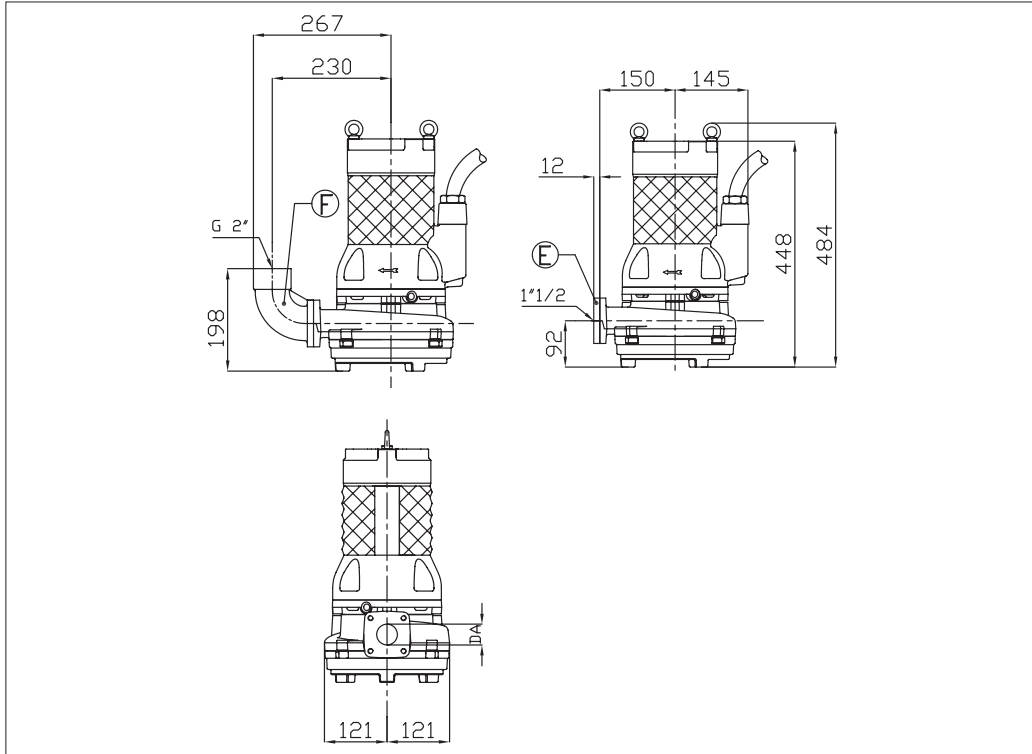
MOTORE • MOTOR • MOTEUR

Tensione Power Tension	230V ±10% 50 Hz	Cavo Cable Câble	10 m
Avviamento ora Starts per hour Nombre de démarrages par huere	15	P ₂	1.8 kW
Classe di isolamento Insulation class Classe d'isolation	H	Corrente di avviamento Start Current Ampérage au démarrage	35 A
Grado di protezione Protection degree Indice de protection	IP 68	Corrente 100% Current 100% Ampérage 100%	10 A
		Velocità di rotazione (rpm) Rotation speed (rpm) Vitesse de rotation (rpm)	2850



DIMENSIONI • DIMENSIONS • DIMENSIONS

RICAMBI • REPLACEMENT PARTS • PIÈCES DE RECHANGE



<p>KIT RIPARAZIONE ORDINARIA: O-ring, Gommini, Tenute meccaniche Paraolio, Rosette tappo olio ORDINARY REPAIR KIT: O-ring, Glands, Mechanical seals, Lip seals, Oil plug washers KIT DE RÉPARATION ORDINAIRE: Joint torique, Bouchon caoutchouc, Garniture mécanique, Joint à lèvres, Bouchon pour chambre à huile</p>	
<p>KIT RIPARAZIONE COMPLETA: O-ring, Gommini, Tenute meccaniche, Paraolio, Rosette tappo olio, Anelli cromati, Cavo elettrico, Molla precarico, Cuscinetti, Anelli seeger COMPLETE REPAIR KIT: O-ring, Glands, Mechanical seals, Lip seals, Oil plug washers, Chromate rings, Electric cable, Pre-loading spring, Bearings, Circlips KIT REPARATION COMPLET: Joint torique, Bouchon caoutchouc, Garniture mécanique, Joint à lèvres, Bouchon pour chambre à huile, Joint chromé, Cable électrique, Ressort, Roulement, Circlips</p>	
<p>Girante Impeller Roue</p>	<p>150 mm</p>

**SELEZIONE QDC
SELECTION QDC
SÉLECTION QDC**

<p>Modello Kit scivolo discesa QDC Model Modèle Kit pied d'assise PA DN50</p>	
<p>Gomito/Curva di mandata Elbow Coude/courbe de sortie CUF 2"</p>	
<p>Controflange Counterflanges Contre-brides FL 1" 1/2 T</p>	

TABELLA DIMENSIONI • DIMENSIONS TABLE • TABLEAU DE DIMENSIONS

DA	Modello • Model • Modèle	[kW]	Peso • Weight • Poids [kg]
40	40DSF51.8	1.8	38

GIRANTE SEMI-APERTA A RASAMENTO SEMI-OPEN IMPELLER ROUE SEMI-OUVERTE

CURVE DI PRESTAZIONE • PERFORMANCE CURVES • COURBES DE PERFORMANCE

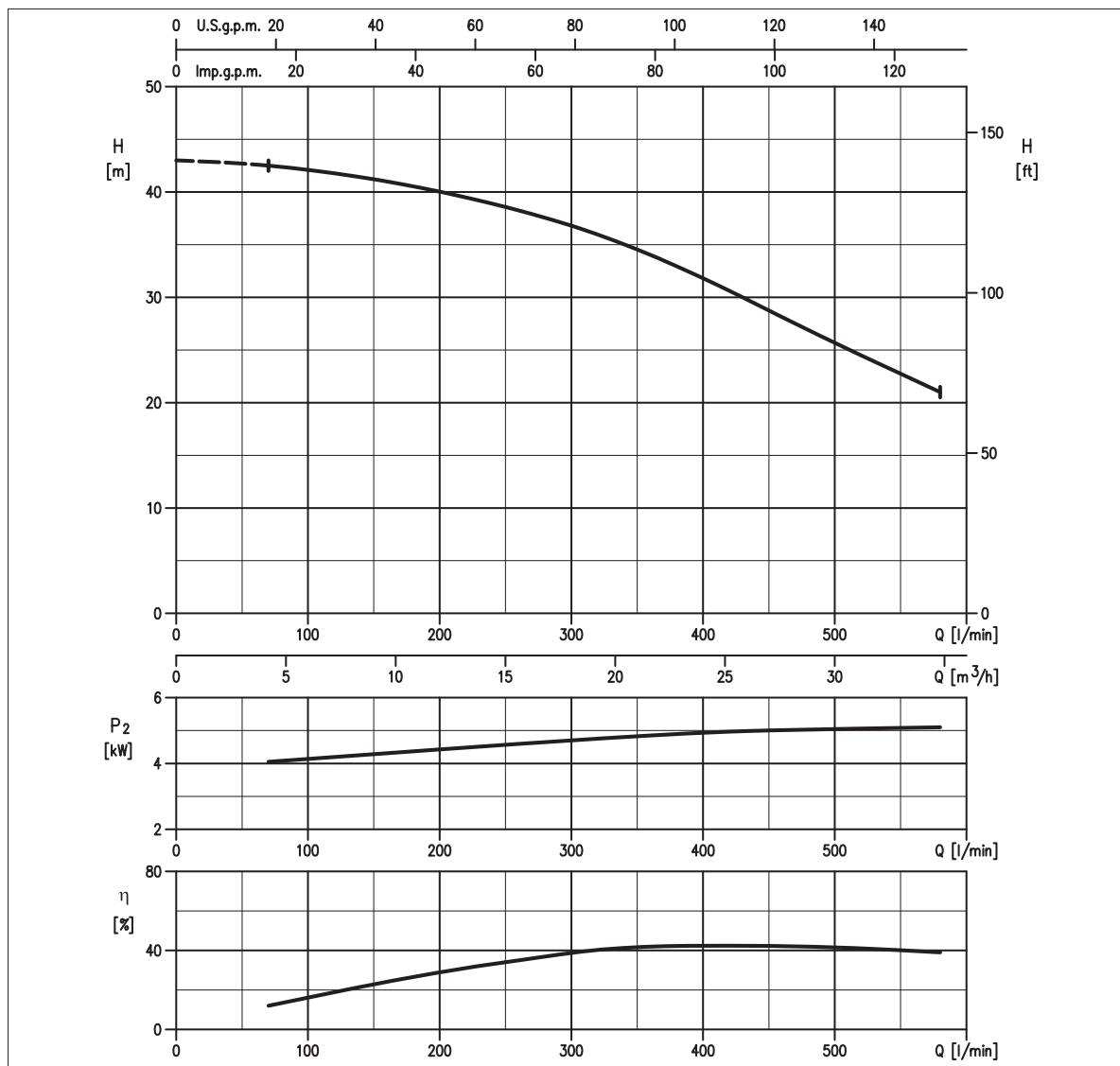


TABELLA PRESTAZIONI • PERFORMANCE TABLE • TABLEAU DE PERFORMANCES

Modello Model Modèle	P ₂		Q = Portata / Flow rate / Débit																				
	[HP]	[kW]	l/min 70 m³/h 4	100 6	150 9	200 12	250 15	300 18	400 24	450 27	473 28	500 30	550 33	580 35	600 36	700 42	800 48	950 57	1000 60	1170 70	1200 72	1250 75	1400 84
40DSF55.7	7,5	5,7	42,5	42	41,5	40	38,9	36,8	32	29	27,5	25,8	23	21	-	-	-	-	-	-	-	-	-

H = Prevalenza / Head / Hauteur manometrique totale [m]

IDRAULICA • HYDRAULIC • HYDRAULIQUE

Girante Impeller Roue	SEMI-APERTA SEMI-OPEN SEMI-OUVERTE
Mandata Flanges Brides	DN 40 mm
Massimo diametro passaggi liberi Maximum solid diameter Passage libre maximum	7 mm
Temperatura massima del liquido Maximum liquid temperature Température maximale du liquide	40°C
Doppia tenuta meccanica Double mechanical seal Double garniture mécanique	SiC/SiC/NBR Carb/Cer/NBR

TIPO POMPA • PUMP TYPE • TYPE DE POMPE

Peso Weight Poids	68 kg	Costruzione Construction Construction	GHISA CAST IRON FONTE
-------------------------	--------------	---	--------------------------------------

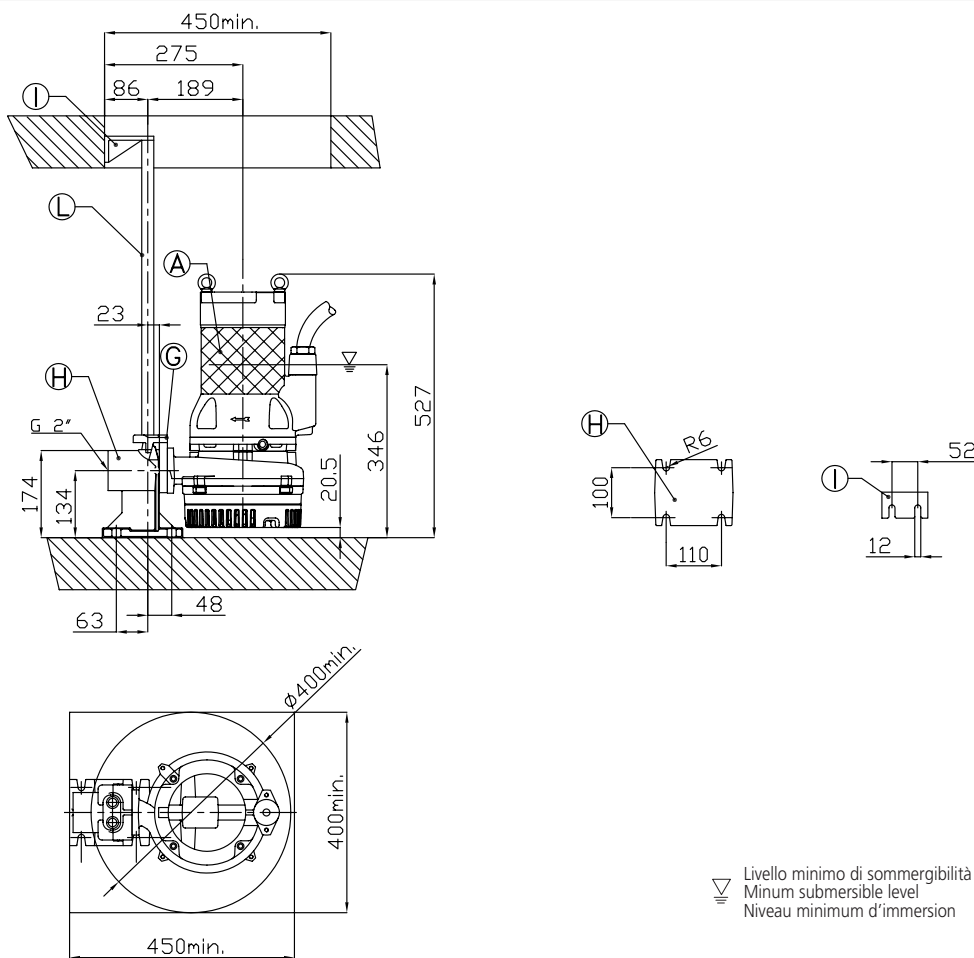
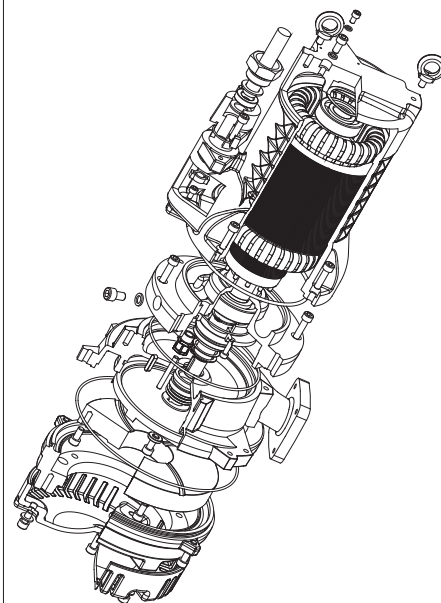
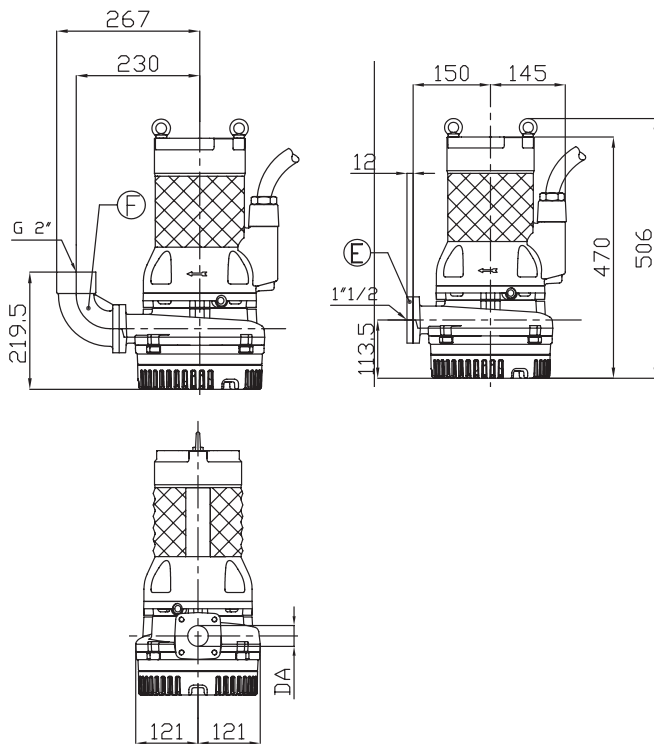
MOTORE • MOTOR • MOTEUR

Tensione Power Tension	400/690V ±10% 50 Hz	Cavo Cable Câble	10 m
Avviamento ora Starts per hour Nombre de démarrages par huere	15	P ₂	5,7 kW
Classe di isolamento Insulation class Classe d'isolation	H	Corrente di avviamento Start Current Ampérage au démarrage	73,8 A
Grado di protezione Protection degree Indice de protection	IP 68	Corrente 100% Current 100% Ampérage 100%	12,5 A
		Velocità di rotazione (rpm) Rotation speed (rpm) Vitesse de rotation (rpm)	2850



DIMENSIONI • DIMENSIONS • DIMENSIONS

RICAMBI • REPLACEMENT PARTS • PIÈCES DE RECHANGE



KIT RIPARAZIONE ORDINARIA:

O-ring, Gommini, Tenute meccaniche
 Paraolio, Rosette tappo olio
ORDINARY REPAIR KIT: O-ring,
 Glands, Mechanical seals, Lip seals, Oil
 plug washers

KIT DE RÉPARATION ORDINAIRE:

Joint torique, Bouchon caoutchouc,
 Garniture mécanique, Joint à lèvres,
 Bouchon pour chambre à huile



KIT RIPARAZIONE COMPLETA:

O-ring, Gommini, Tenute meccaniche,
 Paraolio, Rosette tappo olio, Anelli
 cromati, Cavo elettrico, Molla
 precarico, Cuscinetti, Anelli seeger
COMPLETE REPAIR KIT: O-ring,
 Glands, Mechanical seals, Lip seals, Oil
 plug washers, Chromate rings, Electric
 cable, Pre-loading spring, Bearings,
 Circlips

KIT REPARATION COMPLET:

Joint torique, Bouchon caoutchouc,
 Garniture mécanique, Joint à lèvres,
 Bouchon pour chambre à huile, Joint
 chromé, Cable électrique, Ressort,
 Roulement, Circlips

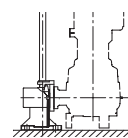


Girante
 Impeller
 Roue

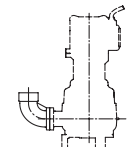
192 mm

**SELEZIONE QDC
 SELECTION QDC
 SÉLECTION QDC**

Modello Kit scivolo discesa
 QDC Model
 Modèle Kit pied d'assise
PA DN50



Gomito/Curva di mandata
 Elbow
 Coude/courbe de sortie
CUF 2"



Controflange
 Counterflanges
 Contre-brides
FL 1" 1/2 T



TABELLA DIMENSIONI • DIMENSIONS TABLE • TABLEAU DE DIMENSIONS

DA	Modello • Model • Modèle	[kW]	Peso • Weight • Poids [kg]
40	40DSF55,7	5.7	68

GIRANTE SEMI-APERTA A RASAMENTO SEMI-OPEN IMPELLER ROUE SEMI-OUVERTE

CURVE DI PRESTAZIONE • PERFORMANCE CURVES • COURBES DE PERFORMANCE

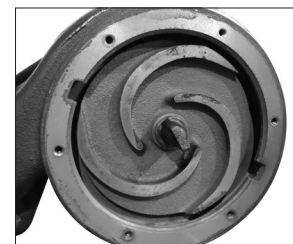
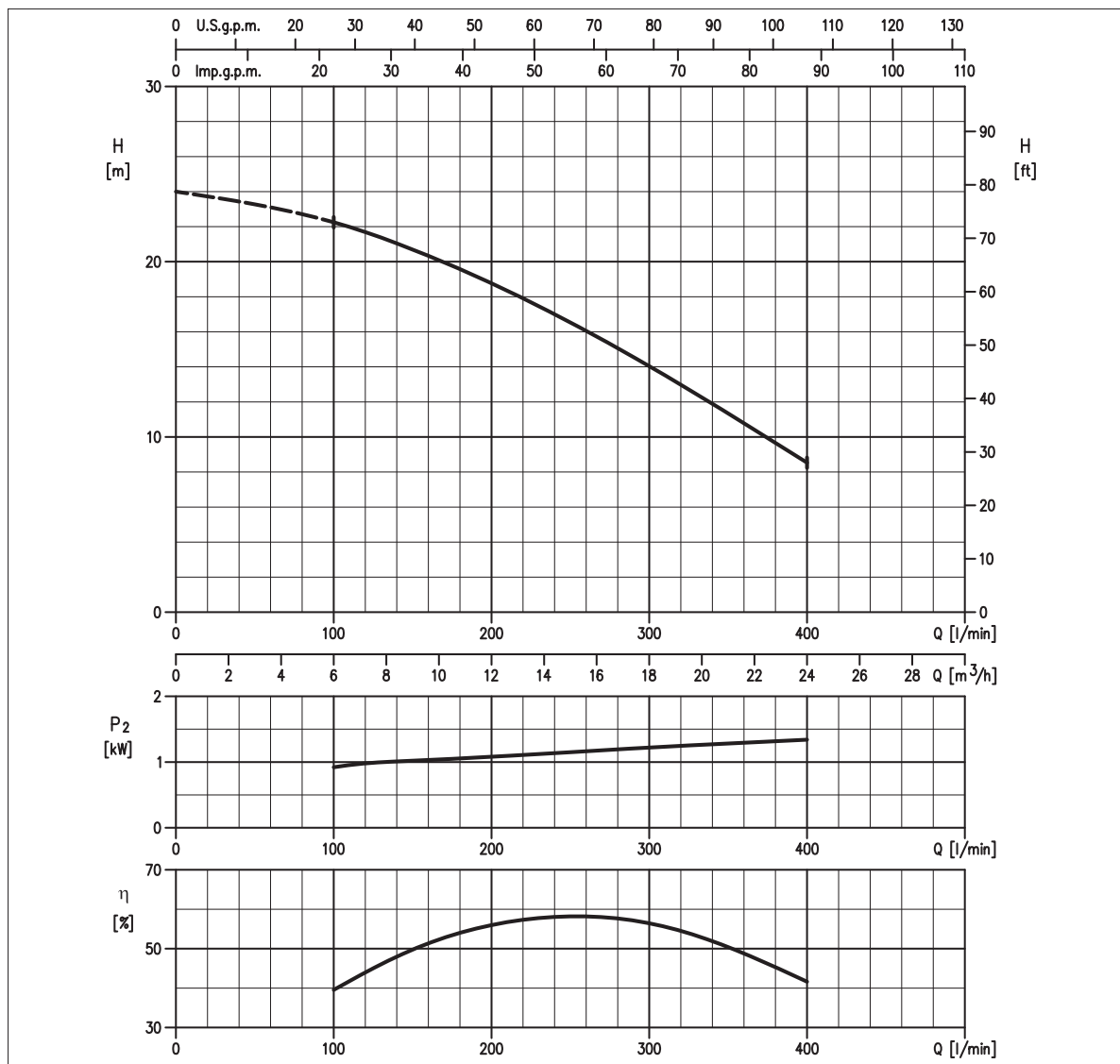


TABELLA PRESTAZIONI • PERFORMANCE TABLE • TABLEAU DE PERFORMANCES

Modello Model Modèle	P ₂		Q = Portata / Flow rate / Débit																					
	[HP]	[kW]	l/min 70 m³/h 4	100 6	150 9	200 12	250 15	300 18	400 24	450 27	473 28	500 30	550 33	580 35	600 36	700 42	800 48	950 57	1000 60	1170 70	1200 72	1250 75	1400 84	
50DS51.5	2	1.5	-	22,3	20,7	18,8	16,5	14	8,5	-	-	-	-	-	-	-	-	-	-	-	-	-	-	-

H = Prevalenza / Head / Hauteur manométrique totale [m]

IDRAULICA • HYDRAULIC • HYDRAULIQUE

Girante Impeller Roue	SEMI-APERTA SEMI-OPEN SEMI-OUVERTE
Mandata Flanges Brides	G 2"
Massimo diametro passaggi liberi Maximum solid diameter Passage libre maximum	5 mm
Temperatura massima del liquido Maximum liquid temperature Température maximale du liquide	40°C
Doppia tenuta meccanica Double mechanical seal Double garniture mécanique	SiC/SiC/NBR Carb/Cer/NBR

TIPO POMPA • PUMP TYPE • TYPE DE POMPE

Peso Weight Poids	25 kg	Costruzione Construction Construction	GHISA CAST IRON FONTE
-------------------------	--------------	---	--------------------------------------

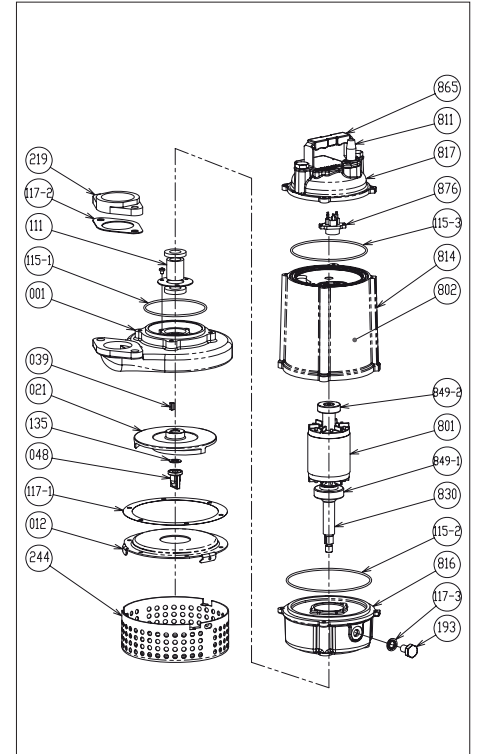
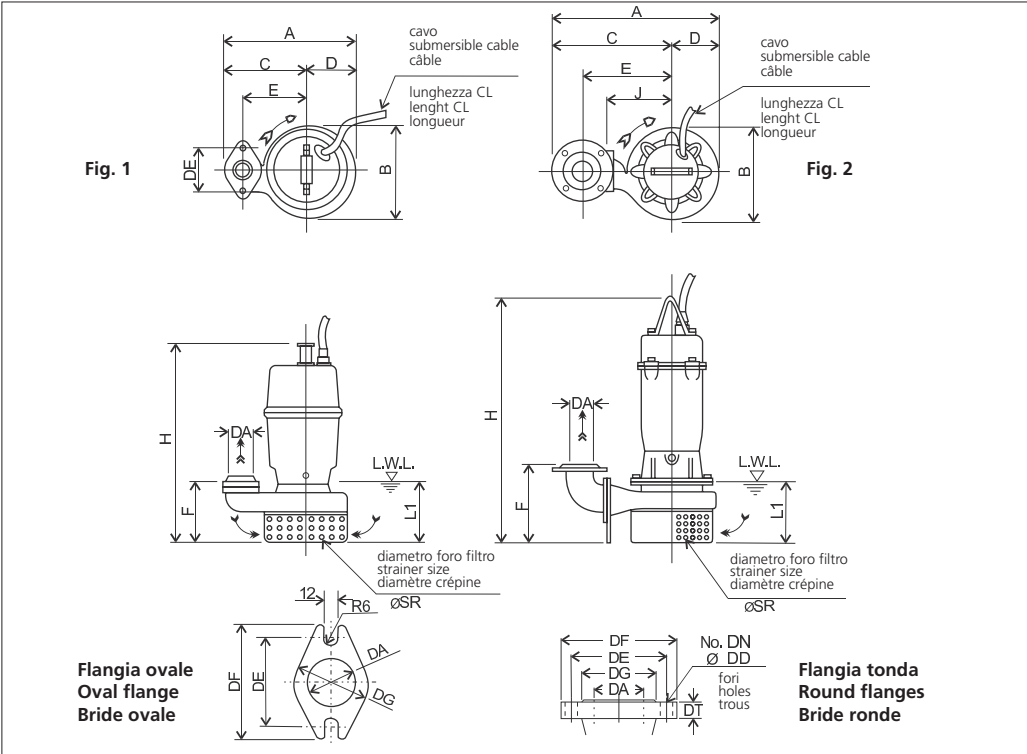
MOTORE • MOTOR • MOTEUR

Tensione Power Tension	380/415V ±10% 50 Hz	Cavo Cable Câble	6 m
Avviamento ora Starts per hour Nombre de démarrages par huere	10	P ₂	1.5 kW
Classe di isolamento Insulation class Classe d'isolation	F	Voltaggio Start Current Ampérage au démarrage	380 V 400 V 415 V
Grado di protezione Protection degree Indice de protection	IP 68	Corrente di avviamento Start Current Ampérage au démarrage	20,5 A 21,1 A 22,5 A
		Corrente 100% Current 100% Ampérage 100%	3,7 A 3,3 A 3,3 A
		Velocità di rotazione (rpm) Rotation speed (rpm) Vitesse de rotation (rpm)	2850

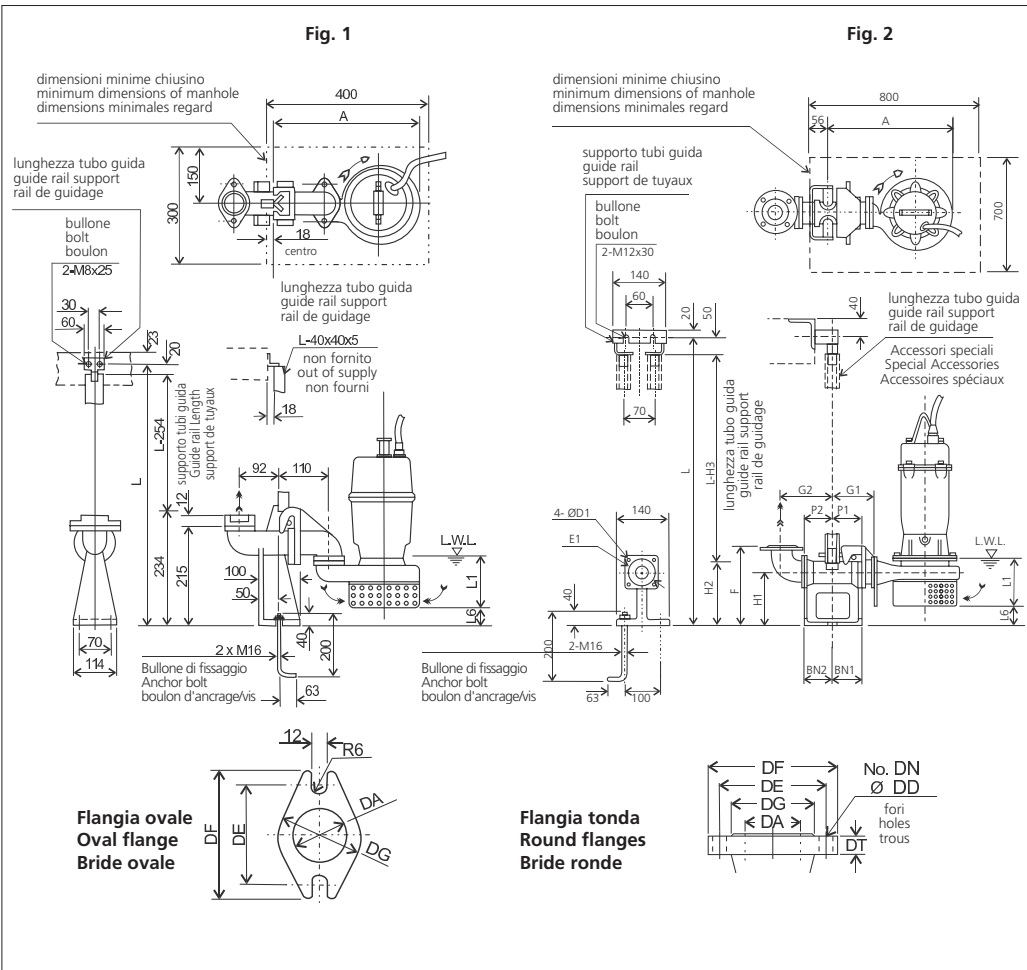


DIMENSIONI • DIMENSIONS • DIMENSIONS

RICAMBI • REPLACEMENT PARTS • PIÈCES DE RECHANGE



001	Corpo pompa - Pump casing - Corps de la pompe
021	Girante - Impeller - Roue
039	Linguetta - Key - Languette
048	Dado girante - Nut - Écrou roue
111	Tenuta meccanica - Mechanical seal Garniture mécanique
115-2	Anello OR - O-ring - Bague OR
115-3	Anello OR - O-ring - Bague OR
115-1	Anello OR - O-ring - Bague OR
117-2	Guarnizione - Gasket - Joint
117-3	Guarnizione - Gasket - Joint
135	Rondella - Washer - Rondelle d'étanchiété
811	Cavo - Cable - Câble
849-1	Cuscinetto - Bearing - Coussinet
849-2	Cuscinetto - Bearing - Coussinet
876	Termoprotettore - Auto cut - Protection thermique



**MODELLO KIT SCIVOLO DISCESA (QDC)
QDC MODEL
MODÈLE KIT PIED D'ASSISE (QDC)
LS 50**

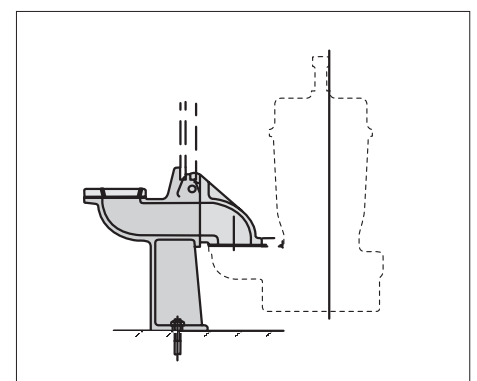


TABELLA DIMENSIONI QDC • QDC DIMENSIONS TABLE • TABLEAU DE DIMENSIONS QDC

DA	Modello Model Modèle	Fig.	Tipo Flangia Flanges type Type bride	[kW]	DA	A	P1	P2	G1	G2	F	H1	H2	H3	L1 (*)	L6	BN1	BN2	D1	E1	QDC Mod.	[kg]
50	50DS51.5	1	Ovale • Oval • Ovale	1.5	G2	-	-	-	-	-	-	-	-	-	120	25	-	-	-	-	LS50	9

GIRANTE SEMI-APERTA A RASAMENTO SEMI-OPEN IMPELLER ROUE SEMI-OUVERTE

CURVE DI PRESTAZIONE • PERFORMANCE CURVES • COURBES DE PERFORMANCE

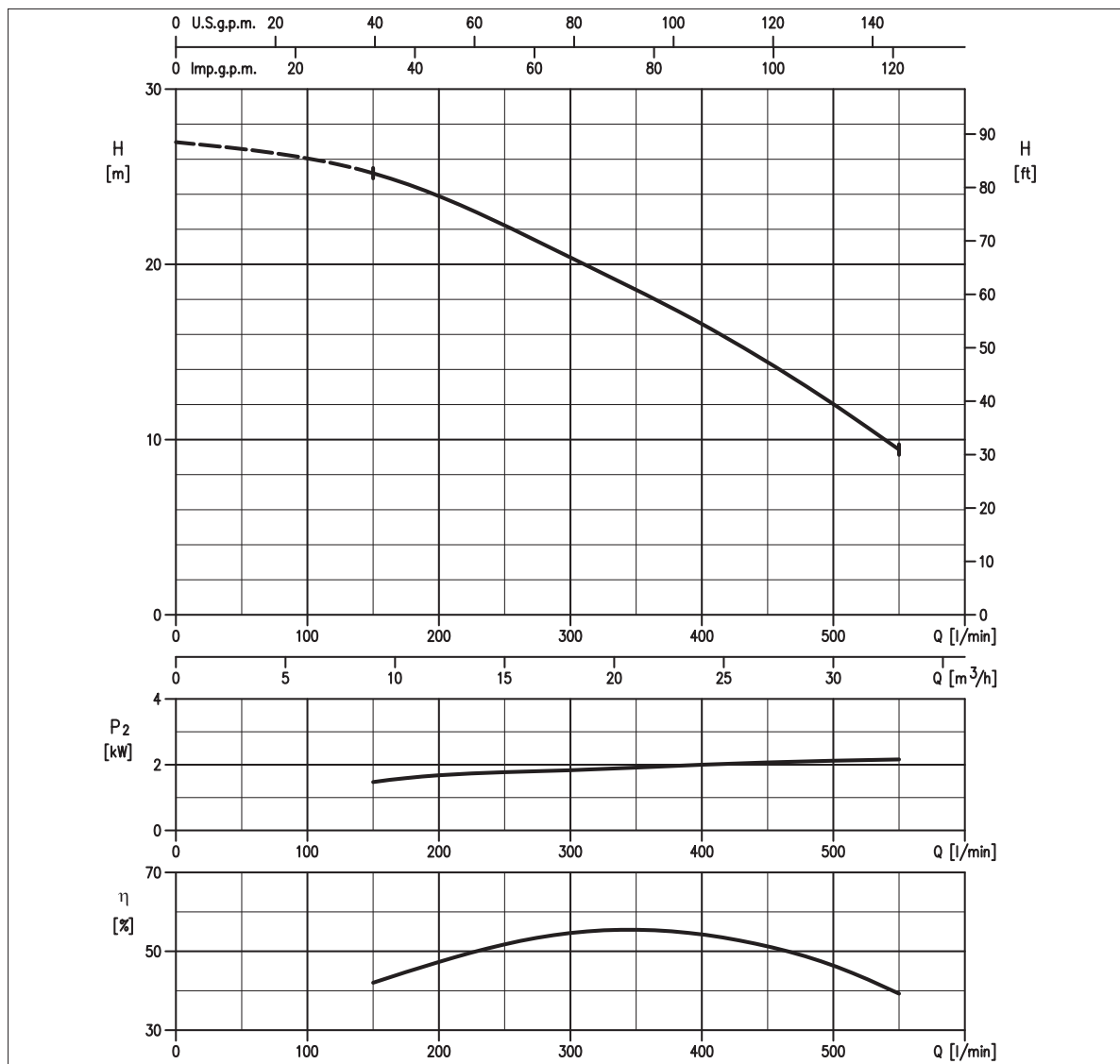


TABELLA PRESTAZIONI • PERFORMANCE TABLE • TABLEAU DE PERFORMANCES

Modello Model Modèle	P ₂		Q = Portata / Flow rate / Débit																					
	[HP]	[kW]	l/min 70 m ³ /h 4	100 6	150 9	200 12	250 15	300 18	400 24	450 27	473 28	500 30	550 33	580 35	600 36	700 42	800 48	950 57	1000 60	1170 70	1200 72	1250 75	1400 84	
50DS51.5	3	2.2	-	-	25,2	23,7	22,1	20,4	16,6	14,4	13,3	12	9,4	-	-	-	-	-	-	-	-	-	-	-

H = Prevalenza / Head / Hauteur manometrique totale [m]

IDRAULICA • HYDRAULIC • HYDRAULIQUE

Girante Impeller Roue	SEMI-APERTA SEMI-OPEN SEMI-OUVERTE
Mandata Flanges Brides	DN 50 mm
Massimo diametro passaggi liberi Maximum solid diameter Passage libre maximum	5 mm
Temperatura massima del liquido Maximum liquid temperature Température maximale du liquide	40°C
Doppia tenuta meccanica Double mechanical seal Double garniture mécanique	SiC/SiC/NBR Carb/Cer/NBR

TIPO POMPA • PUMP TYPE • TYPE DE POMPE

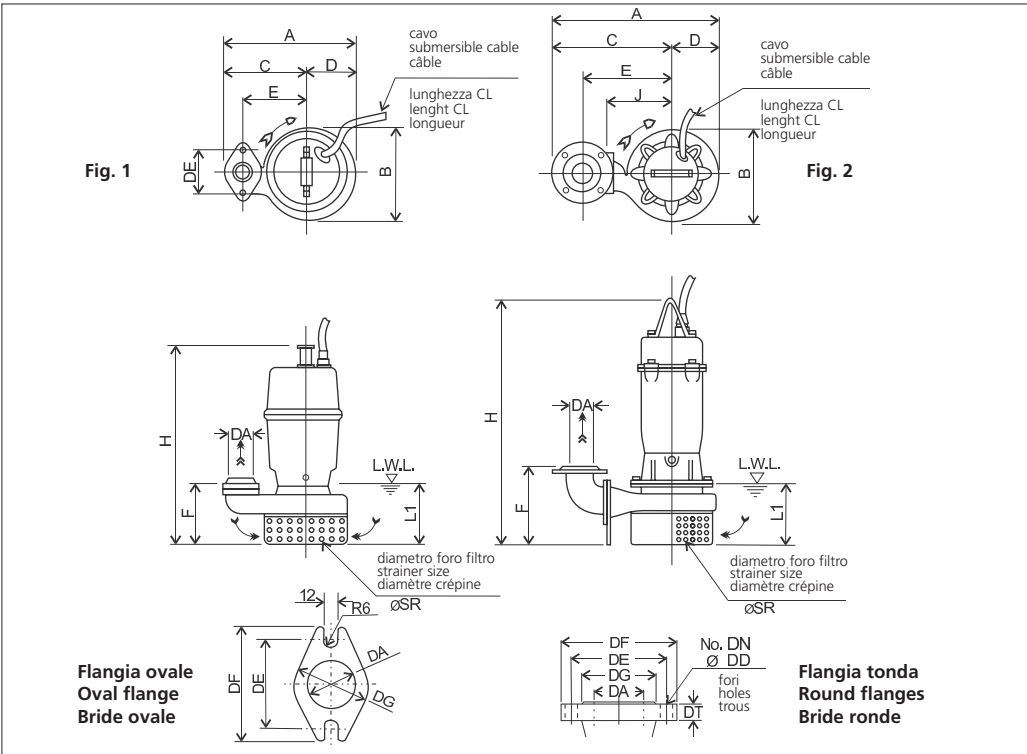
Peso Weight Poids	55 kg	Costruzione Construction Construction	GHISA CAST IRON FONTE
-------------------------	--------------	---	--------------------------------------

MOTORE • MOTOR • MOTEUR

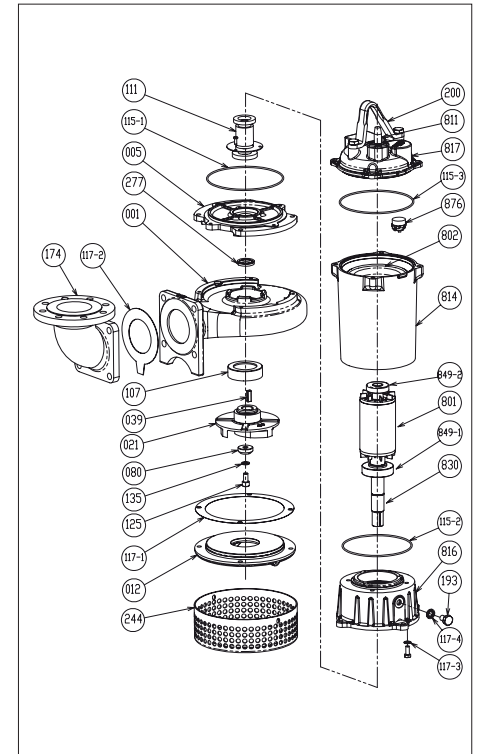
Tensione Power Tension	380/415V ±10% 50 Hz	Cavo Cable Câble	10 m
Avviamento ora Starts per hour Nombre de démarrages par huere	10	P ₂	2.2 kW
Classe di isolamento Insulation class Classe d'isolation	F	Voltaggio	380 V 400 V 415 V
Grado di protezione Protection degree Indice de protection	IP 68	Corrente di avviamento Start Current Ampérage au démarrage	28,7 A 30,0 A 31,5 A
		Corrente 100% Current 100% Ampérage 100%	5,10 A 5,00 A 4,60 A
		Velocità di rotazione (rpm) Rotation speed (rpm) Vitesse de rotation (rpm)	2850



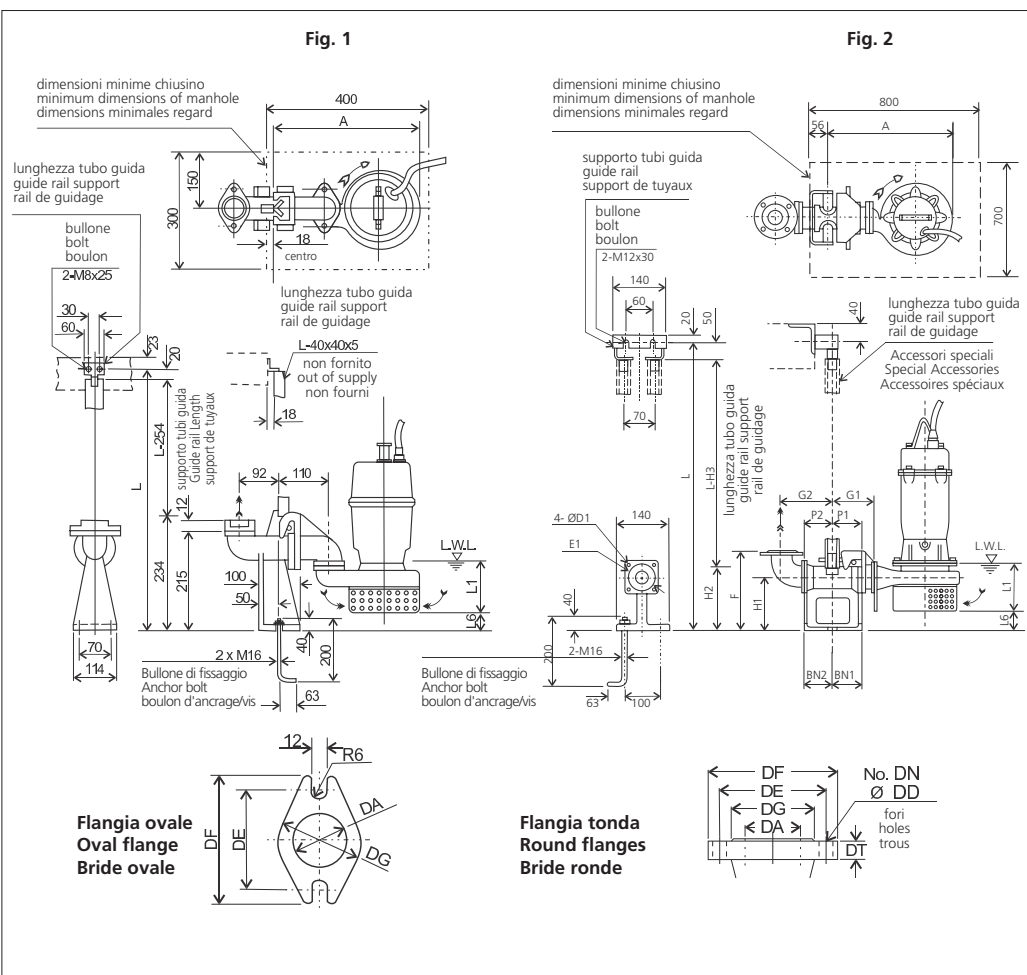
DIMENSIONI • DIMENSIONS • DIMENSIONS



RICAMBI • REPLACEMENT PARTS • PIÈCES DE RECHANGE



001	Corpo pompa - Pump casing - Corps de la pompe
021	Girante - Impeller - Roue
039	Linguetta - Key - Languette
080	Bussola - Bushing - Bague d'usure
107	Anello di rasamento - Wear ring - Anneau arasement
111	Tenuta meccanica - Mechanical seal Garniture mécanique
115-2	Anello OR - O-ring - Bague OR
115-3	Anello OR - O-ring - Bague OR
115-1	Anello OR - O-ring - Bague OR
117-1	Guarnizione - Gasket - Joint
117-2	Guarnizione - Gasket - Joint
117-3	Guarnizione - Gasket - Joint
135	Rondella - Washer - Rondelle d'étanchiété
277	Anello tenuta - V-ring - Joint de garniture
811	Cavo - Cable - Câble
849-1	Cuscinetto - Bearing - Coussinet
849-2	Cuscinetto - Bearing - Coussinet
876	Termoprotettore - Auto cut - Protection thermique



MODELLO KIT SCIVOLO DISCESA (QDC)
QDC MODEL
MODÈLE KIT PIED D'ASSISE (QDC)
LM 50

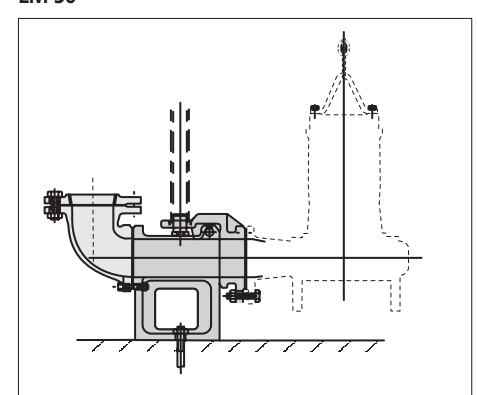


TABELLA DIMENSIONI QDC • QDC DIMENSIONS TABLE • TABLEAU DE DIMENSIONS QDC

DA	Modello Model Modèle	Fig.	Tipo Flangia Flanges type Type bride	[kW]	DA	A	P1	P2	G1	G2	F	H1	H2	H3	L1 (*)	L6	BN1	BN2	D1	E1	QDC Mod.	[kg]
50	50DS52.2	2	Tonda • Round • Ronde	2.2	50	415	78	80	115	135	230	135	165	215	160	32	75	80	12	120	LM50	11

GIRANTE SEMI-APERTA A RASAMENTO SEMI-OPEN IMPELLER ROUE SEMI-OUVERTE

CURVE DI PRESTAZIONE • PERFORMANCE CURVES • COURBES DE PERFORMANCE

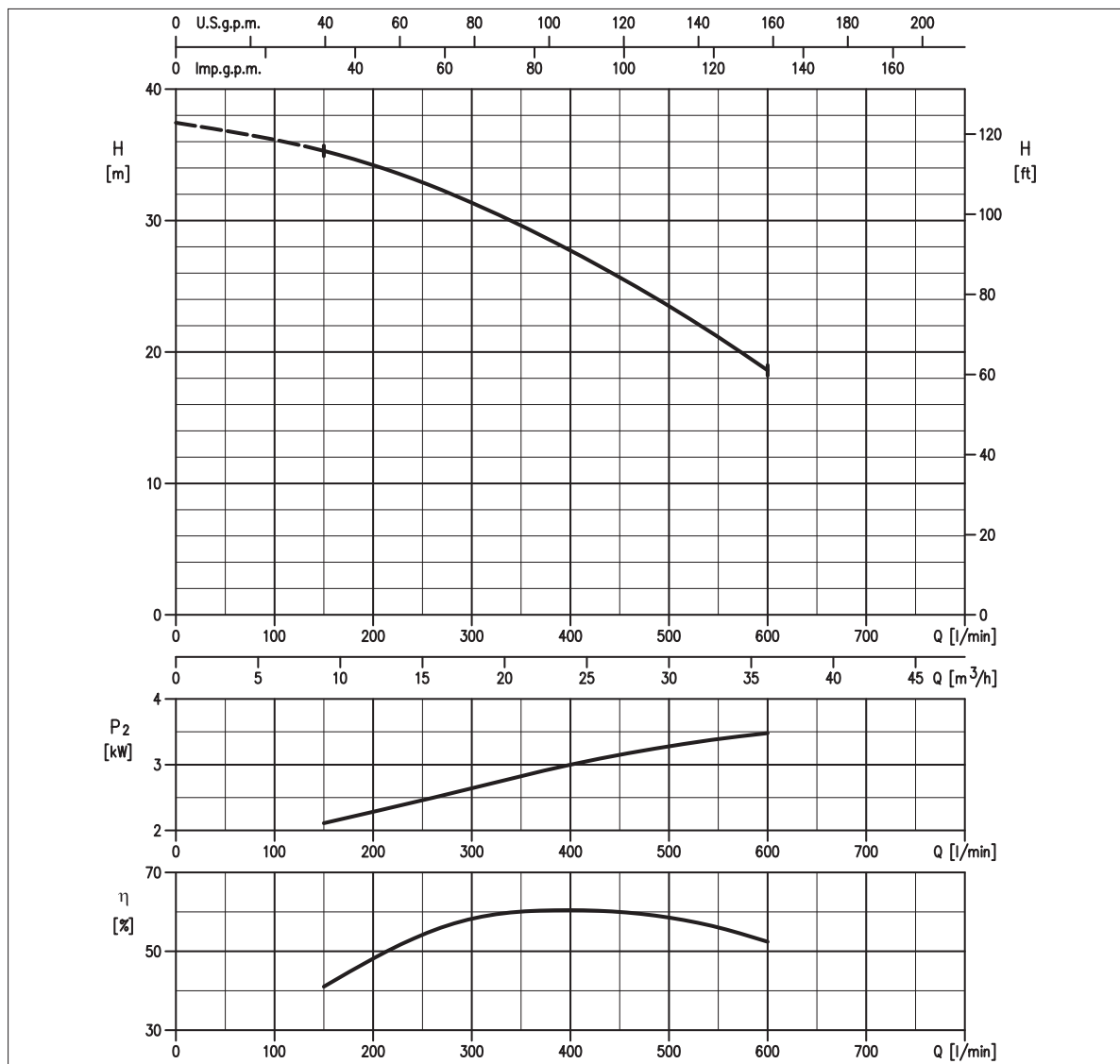


TABELLA PRESTAZIONI • PERFORMANCE TABLE • TABLEAU DE PERFORMANCES

Modello Model Modèle	P ₂		Q = Portata / Flow rate / Débit																					
	[HP]	[kW]	l/min 70 m³/h 4	100 6	150 9	200 12	250 15	300 18	400 24	450 27	473 28	500 30	550 33	580 35	600 36	700 42	800 48	950 57	1000 60	1170 70	1200 72	1250 75	1400 84	
50DS53.7	5	3.7	-	-	35,3	34,2	32,9	31,4	27,7	25,7	24,6	23,5	21,1	19,5	18,6	-	-	-	-	-	-	-	-	-

H = Prevalenza / Head / Hauteur manométrique totale [m]

IDRAULICA • HYDRAULIC • HYDRAULIQUE

Girante Impeller Roue	SEMI-APERTA SEMI-OPEN SEMI-OUVERTE
Mandata Flanges Brides	DN 50 mm
Massimo diametro passaggi liberi Maximum solid diameter Passage libre maximum	5 mm
Temperatura massima del liquido Maximum liquid temperature Température maximale du liquide	40°C
Doppia tenuta meccanica Double mechanical seal Double garniture mécanique	SiC/SiC/NBR Carb/Cer/NBR

TIPO POMPA • PUMP TYPE • TYPE DE POMPE

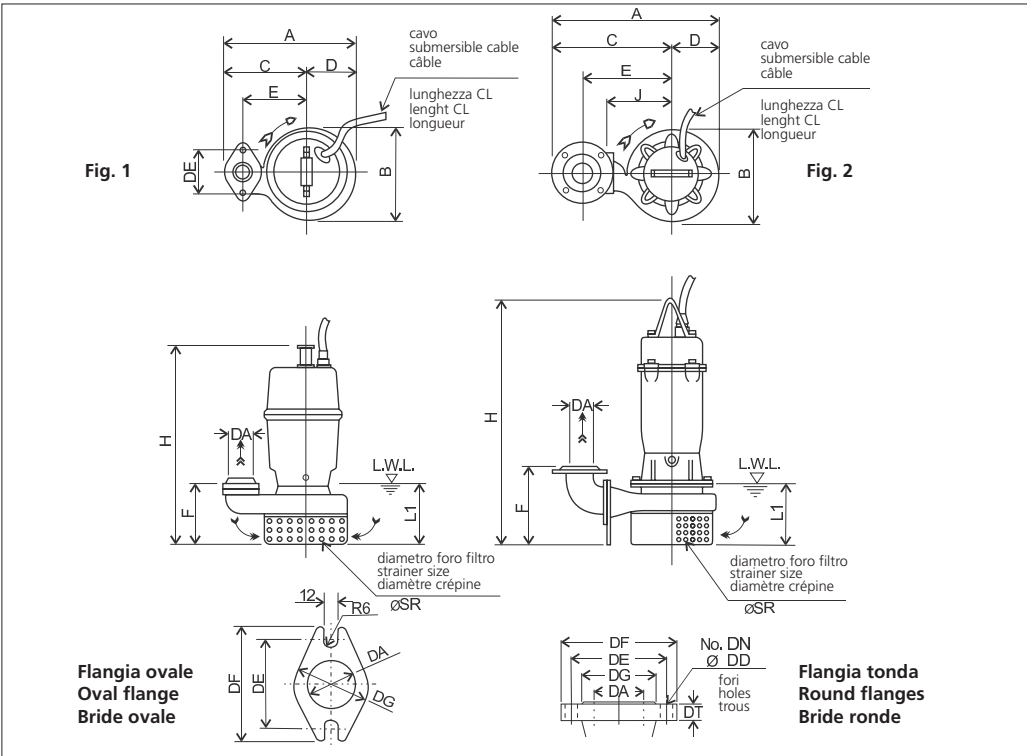
Peso Weight Poids	61 kg	Costruzione Construction Construction	GHISA CAST IRON FONTE
-------------------------	--------------	---	--------------------------------------

MOTORE • MOTOR • MOTEUR

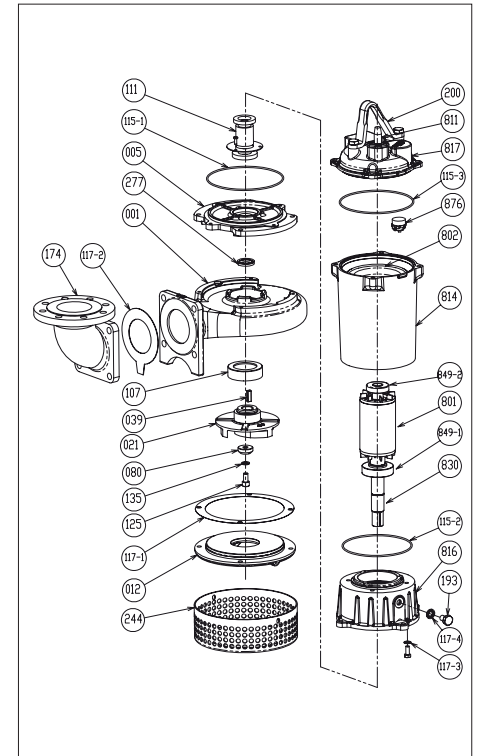
Tensione Power Tension	380/415V ±10% 50 Hz	Cavo Cable Câble	10 m
Avviamento ora Starts per hour Nombre de démarrages par huere	10	P ₂	3.7 kW
Classe di isolamento Insulation class Classe d'isolation	F	Voltaggio Start Current Ampérage au démarrage	380 V 400 V 415 V
Grado di protezione Protection degree Indice de protection	IP 68	Corrente di avviamento Start Current Ampérage au démarrage	51,2 A 51,0 A 53,0 A
		Corrente 100% Current 100% Ampérage 100%	8,80 A 7,80 A 7,80 A
		Velocità di rotazione (rpm) Rotation speed (rpm) Vitesse de rotation (rpm)	2850



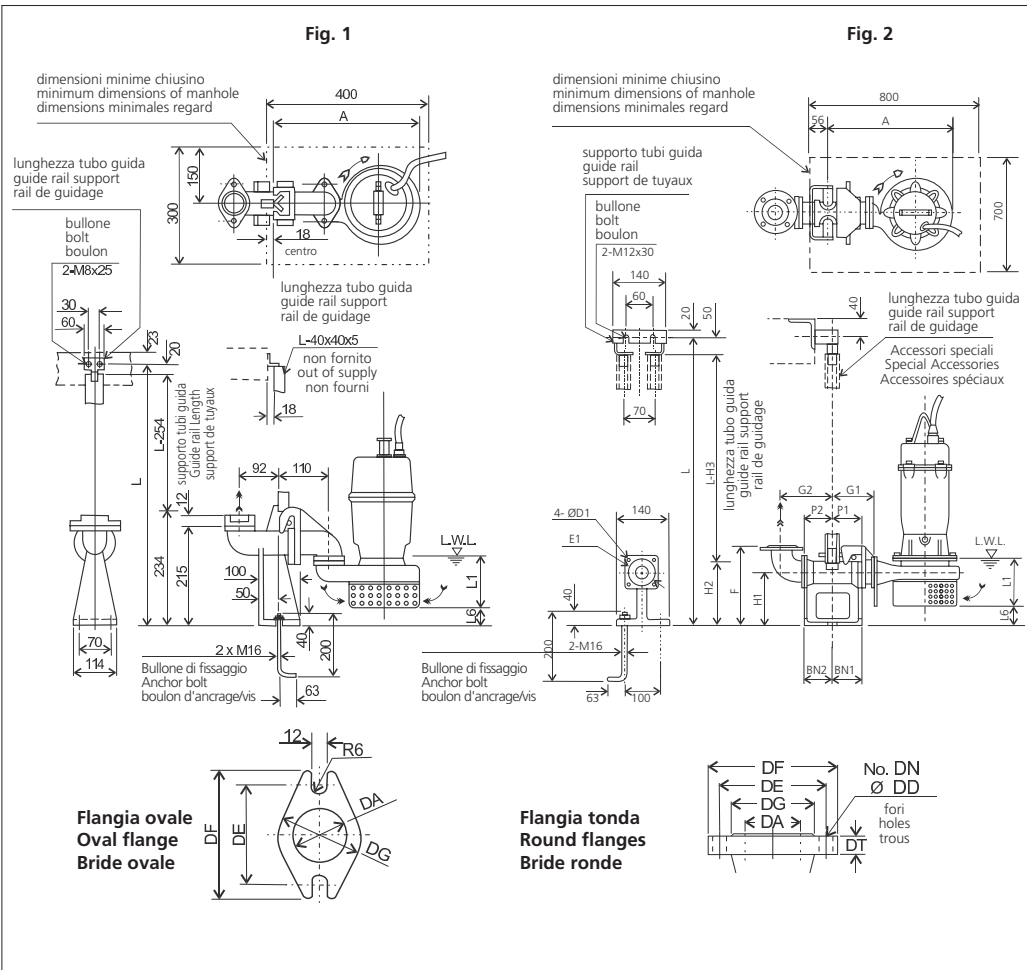
DIMENSIONI • DIMENSIONS • DIMENSIONS



RICAMBI • REPLACEMENT PARTS • PIÈCES DE RECHANGE



001	Corpo pompa - Pump casing - Corps de la pompe
021	Girante - Impeller - Roue
039	Linguetta - Key - Languette
080	Bussola - Bushing - Bague d'usure
107	Anello di rasamento - Wear ring - Anneau arasement
111	Tenuta meccanica - Mechanical seal Garniture mécanique
115-2	Anello OR - O-ring - Bague OR
115-3	Anello OR - O-ring - Bague OR
115-1	Anello OR - O-ring - Bague OR
117-1	Guarnizione - Gasket - Joint
117-2	Guarnizione - Gasket - Joint
117-3	Guarnizione - Gasket - Joint
135	Rondella - Washer - Rondelle d'étanchiété
277	Anello tenuta - V-ring - Joint de garniture
811	Cavo - Cable - Câble
849-1	Cuscinetto - Bearing - Coussinet
849-2	Cuscinetto - Bearing - Coussinet
876	Termoprotettore - Auto cut - Protection thermique



MODELLO KIT SCIVOLO DISCESA (QDC)
QDC MODEL
MODÈLE KIT PIED D'ASSISE (QDC)
LM 50

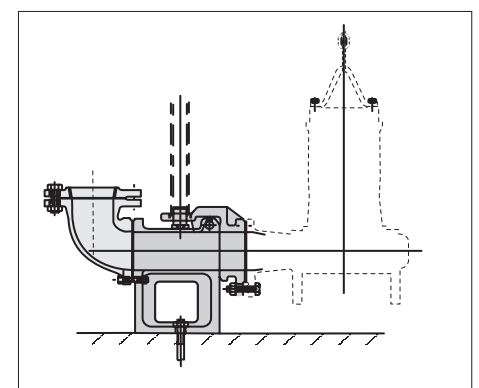


TABELLA DIMENSIONI QDC • QDC DIMENSIONS TABLE • TABLEAU DE DIMENSIONS QDC

DA	Modello Model Modèle	Fig.	Tipo Flangia Flanges type Type bride	[kW]	DA	A	P1	P2	G1	G2	F	H1	H2	H3	L1 (*)	L6	BN1	BN2	D1	E1	QDC Mod.	[kg]
50	50DS53.7	2	Tonda • Round • Ronde	2.2	50	415	78	80	115	135	230	135	165	215	160	32	75	80	12	120	LM50	11

GIRANTE SEMI-APERTA A RASAMENTO
SEMI-OPEN IMPELLER
ROUE SEMI-OUVERTE

CURVE DI PRESTAZIONE • PERFORMANCE CURVES • COURBES DE PERFORMANCE

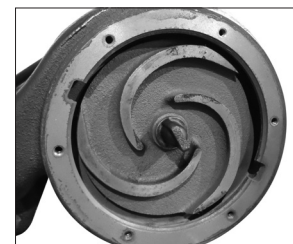
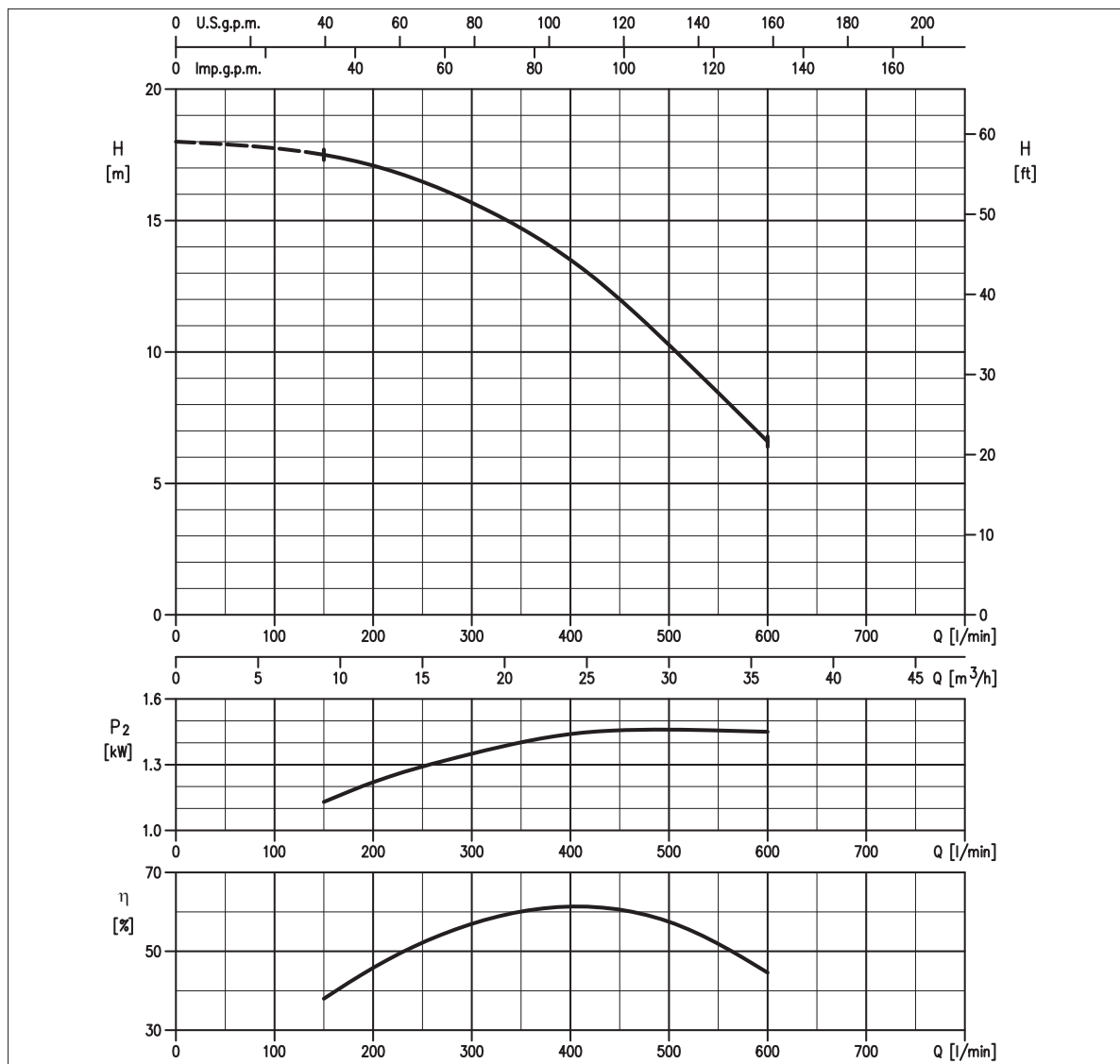


TABELLA PRESTAZIONI • PERFORMANCE TABLE • TABLEAU DE PERFORMANCES

Modello Model Modèle	P ₂		Q = Portata / Flow rate / Débit																					
	[HP]	[kW]	l/min 70 m³/h 4	100 6	150 9	200 12	250 15	300 18	400 24	450 27	473 28	500 30	550 33	580 35	600 36	700 42	800 48	950 57	1000 60	1170 70	1200 72	1250 75	1400 84	
65DS51.5	2	1.5	-	-	17,5	17,1	16,5	15,7	13,5	12	11,2	10,3	8,5	7,3	6,6	-	-	-	-	-	-	-	-	-

H = Prevalenza / Head / Hauteur manométrique totale [m]

IDRAULICA • HYDRAULIC • HYDRAULIQUE

Girante Impeller Roue	SEMI-APERTA SEMI-OPEN SEMI-OUVERTE
Mandata Flanges Brides	DN 65 mm
Massimo diametro passaggi liberi Maximum solid diameter Passage libre maximum	6 mm
Temperatura massima del liquido Maximum liquid temperature Température maximale du liquide	40°C
Doppia tenuta meccanica Double mechanical seal Double garniture mécanique	SiC/SiC/NBR Carb/Cer/NBR

TIPO POMPA • PUMP TYPE • TYPE DE POMPE

Peso Weight Poids	35 kg	Costruzione Construction Construction	GHISA CAST IRON FONTE
-------------------------	--------------	---	--------------------------------------

MOTORE • MOTOR • MOTEUR

Tensione Power Tension	380/415V ±10% 50 Hz	Cavo Cable Câble	10 m
Avviamento ora Starts per hour Nombre de démarrages par huere	10	P ₂	1.5 kW
Classe di isolamento Insulation class Classe d'isolation	F	Voltaggio Start Current Ampérage au démarrage	380 V 400 V 415 V
Grado di protezione Protection degree Indice de protection	IP 68	Corrente di avviamento Current 100% Ampérage 100%	20,5 A 21,1 A 22,5 A
		Velocità di rotazione (rpm) Rotation speed (rpm) Vitesse de rotation (rpm)	3,70 A 3,3 A 3,3 A
			2850

GIRANTE SEMI-APERTA A RASAMENTO SEMI-OPEN IMPELLER ROUE SEMI-OUVERTE

CURVE DI PRESTAZIONE • PERFORMANCE CURVES • COURBES DE PERFORMANCE

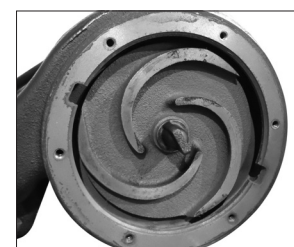
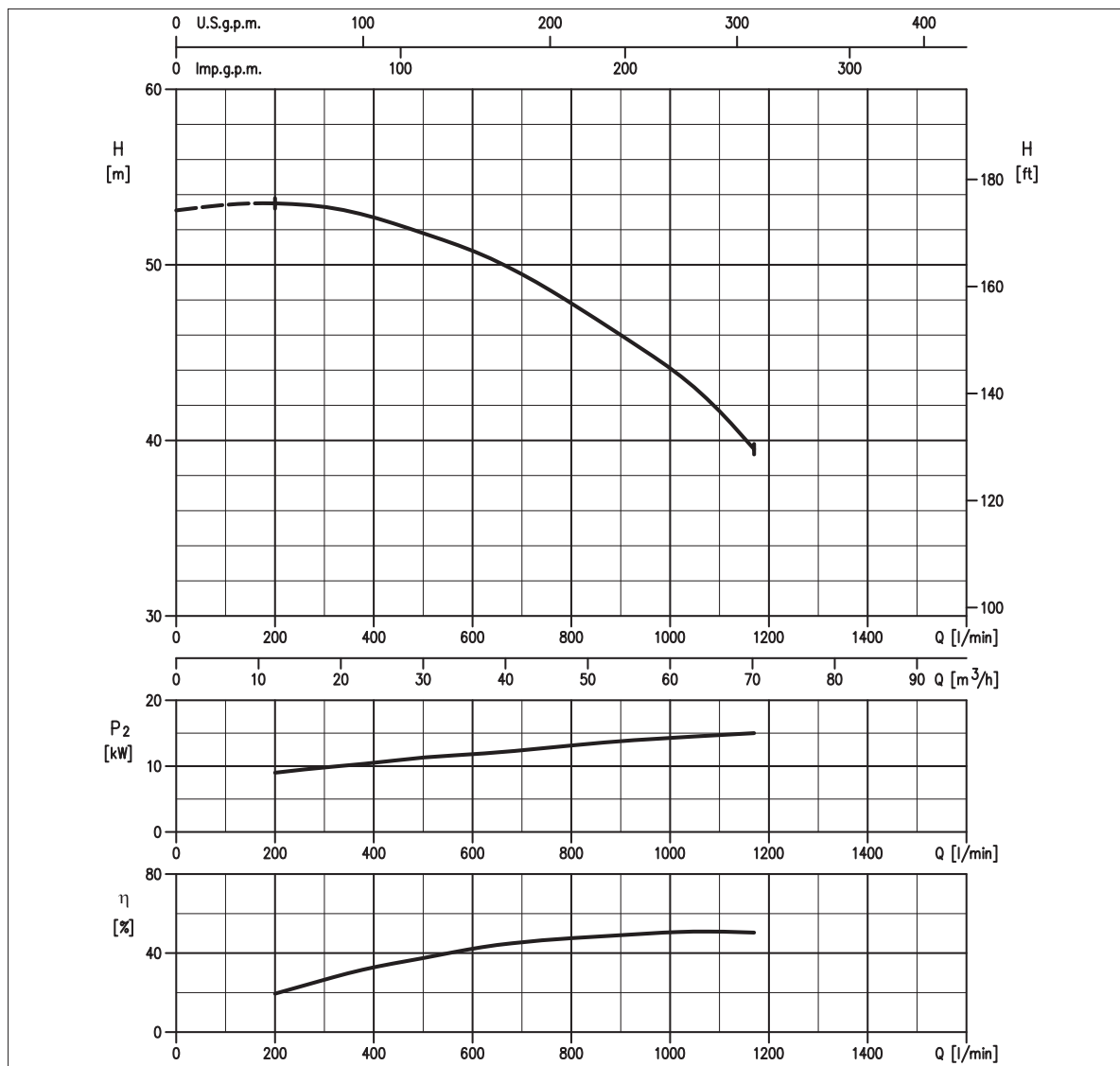


TABELLA PRESTAZIONI • PERFORMANCE TABLE • TABLEAU DE PERFORMANCES

Modello Model Modèle	P ₂		Q = Portata / Flow rate / Débit																				
	[HP]	[kW]	l/min 70 m³/h 4	100 6	150 9	200 12	250 15	300 18	400 24	450 27	473 28	500 30	550 33	580 35	600 36	700 42	800 48	950 57	1000 60	1170 70	1200 72	1250 75	1400 84
65DSF515.9	21,5	15,9	-	-	-	54	53,5	53,5	52,5	52	52	52	51,5	51	51	49,5	48	45	44	39,5	-	-	-

H = Prevalenza / Head / Hauteur manométrique totale [m]

IDRAULICA • HYDRAULIC • HYDRAULIQUE

Girante Impeller Roue	SEMI-APERTA SEMI-OPEN SEMI-OUVERTE
Mandata Flanges Brides	DN 65 mm
Massimo diametro passaggi liberi Maximum solid diameter Passage libre maximum	10 mm
Temperatura massima del liquido Maximum liquid temperature Température maximale du liquide	40°C
Doppia tenuta meccanica Double mechanical seal Double garniture mécanique	SiC/SiC/NBR Carb/Cer/NBR

TIPO POMPA • PUMP TYPE • TYPE DE POMPE

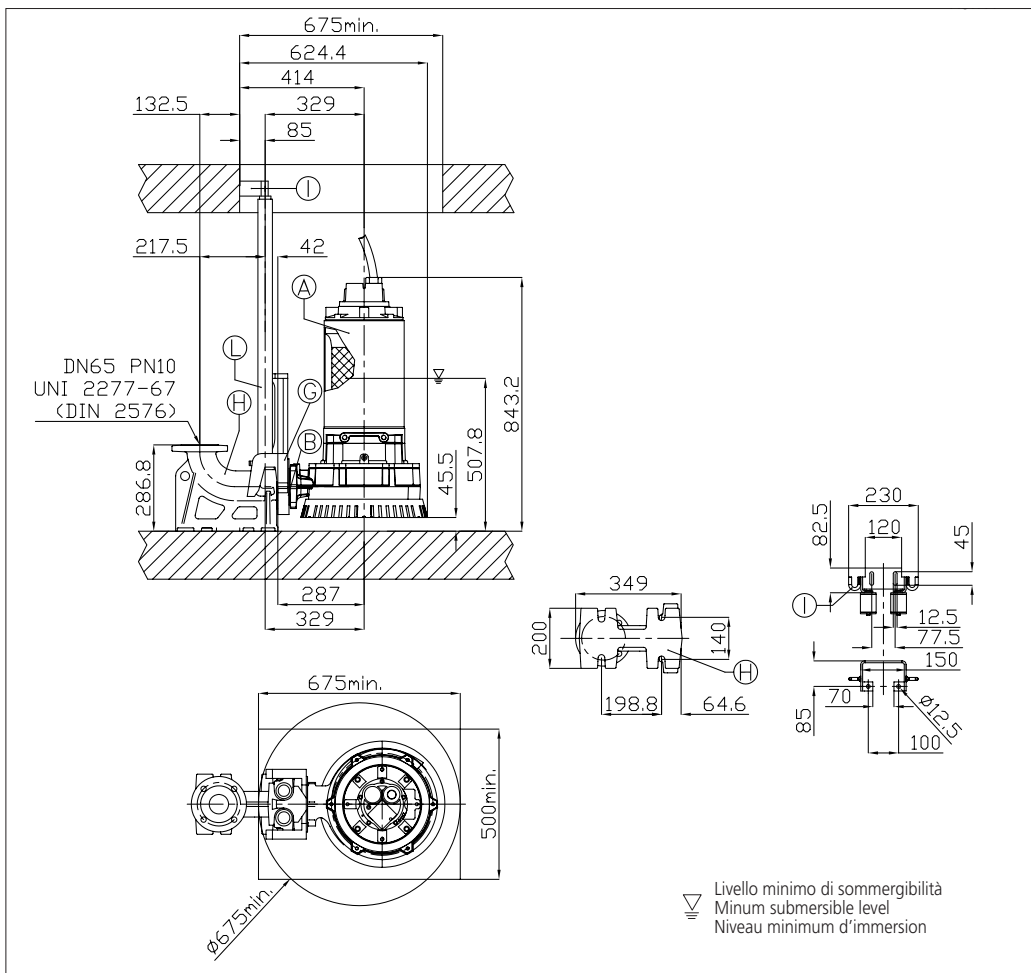
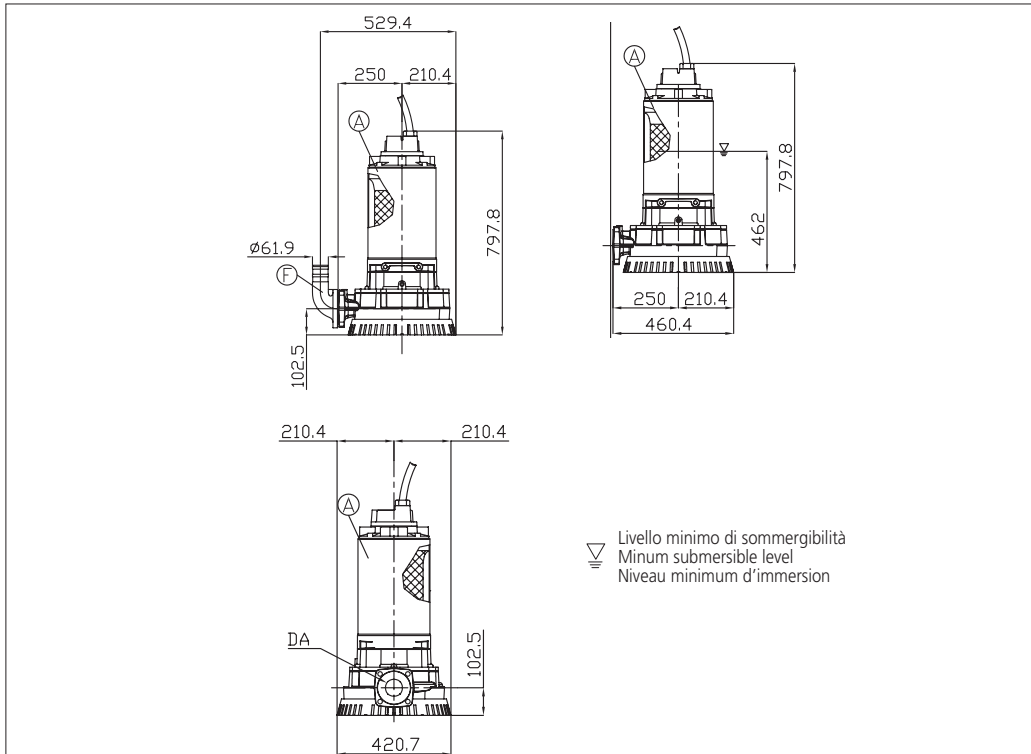
Peso Weight Poids	200 kg	Costruzione Construction Construction	GHISA CAST IRON FONTE
-------------------------	---------------	---	--------------------------------------

MOTORE • MOTOR • MOTEUR

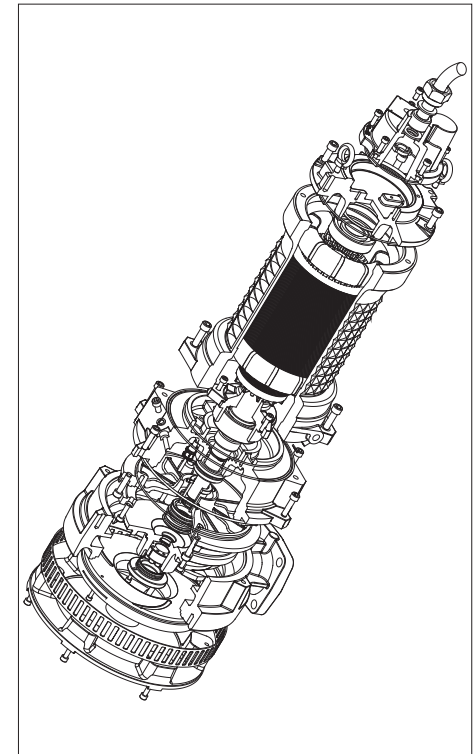
Tensione Power Tension	400/690V ±10% 50 Hz	Cavo Cable Câble	10 m
Avviamento ora Starts per hour Nombre de démarrages par huere	15	P ₂	15.9 kW
Classe di isolamento Insulation class Classe d'isolation	H	Corrente di avviamento Start Current Ampérage au démarrage	171 A
Grado di protezione Protection degree Indice de protection	IP 68	Corrente 100% Current 100% Ampérage 100%	30 A
		Velocità di rotazione (rpm) Rotation speed (rpm) Vitesse de rotation (rpm)	2850



DIMENSIONI • DIMENSIONS • DIMENSIONS



RICAMBI • REPLACEMENT PARTS • PIÈCES DE RECHANGE



<p>KIT RIPARAZIONE ORDINARIA: O-ring, Gommini, Tenute meccaniche Paraolio, Rosette tappo olio ORDINARY REPAIR KIT: O-ring, Glands, Mechanical seals, Lip seals, Oil plug washers KIT DE RÉPARATION ORDINAIRE: Joint torique, Bouchon caoutchouc, Garniture mécanique, Joint à lèvres, Bouchon pour chambre à huile</p>	
<p>KIT RIPARAZIONE COMPLETA: O-ring, Gommini, Tenute meccaniche, Paraolio, Rosette tappo olio, Anelli cromati, Cavo elettrico, Molla precarico, Cuscinetti, Anelli seeger COMPLETE REPAIR KIT: O-ring, Glands, Mechanical seals, Lip seals, Oil plug washers, Chromate rings, Electric cable, Pre-loading spring, Bearings, Circlips KIT REPARATION COMPLET: Joint torique, Bouchon caoutchouc, Garniture mécanique, Joint à lèvres, Bouchon pour chambre à huile, Joint chromé, Cable électrique, Ressort, Roulement, Circlips</p>	
<p>Girante Impeller Roue</p>	<p>230 mm</p>

**SELEZIONE QDC
SELECTION QDC
SÉLECTION QDC**

<p>Modello Kit scivolo discesa QDC Model Modèle Kit pied d'assise PA DN65/15</p>	
<p>Gomito/Curva di mandata Elbow Coude/courbe de sortie CU DN65 con portagomma with hose union avec tuyau</p>	
<p>Treppiede Tripod Tripod TP 65</p>	

TABELLA DIMENSIONI QDC • QDC DIMENSIONS TABLE • TABLEAU DE DIMENSIONS QDC

DA	Modello • Model • Modèle	[kW]	Peso • Weight • Poids [kg]
DN65	65DSF515.9 (230)	15.9	200

GIRANTE SEMI-APERTA A RASAMENTO SEMI-OPEN IMPELLER ROUE SEMI-OUVERTE

CURVE DI PRESTAZIONE • PERFORMANCE CURVES • COURBES DE PERFORMANCE

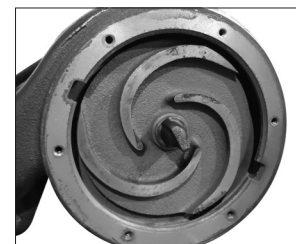
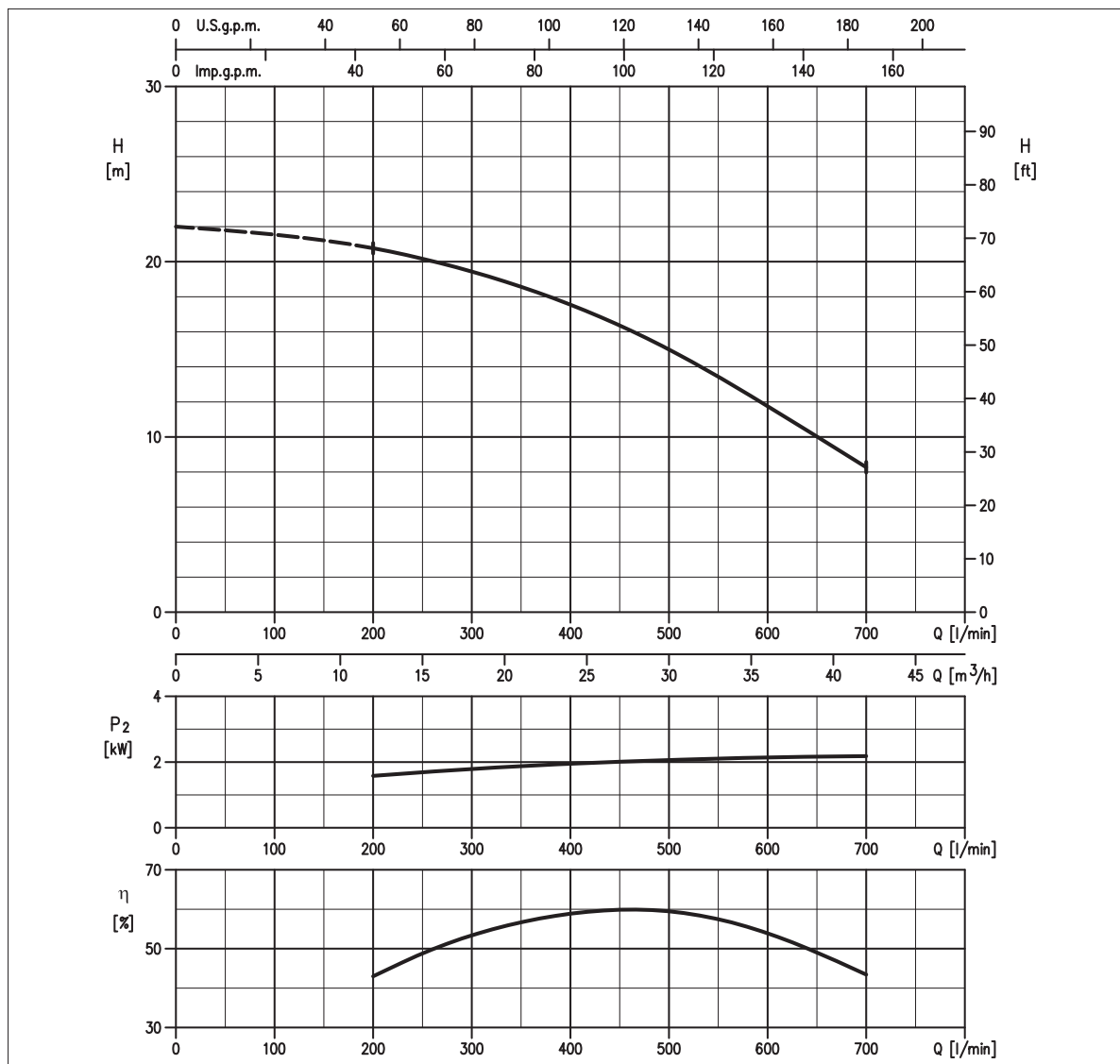


TABELLA PRESTAZIONI • PERFORMANCE TABLE • TABLEAU DE PERFORMANCES

Modello Model Modèle	P ₂		Q = Portata / Flow rate / Débit																					
	[HP]	[kW]	l/min 70 m ³ /h 4	100 6	150 9	200 12	250 15	300 18	400 24	450 27	473 28	500 30	550 33	580 35	600 36	700 42	800 48	950 57	1000 60	1170 70	1200 72	1250 75	1400 84	
80DS52.2	3	2.2	-	-	-	20,8	20,2	19,4	17,6	16,4	15,8	15	13,4	12,5	11,8	8,3	-	-	-	-	-	-	-	-

H = Prevalenza / Head / Hauteur manometrique totale [m]

IDRAULICA • HYDRAULIC • HYDRAULIQUE

Girante Impeller Roue	SEMI-APERTA SEMI-OPEN SEMI-OUVERTE
Mandata Flanges Brides	DN 80 mm
Massimo diametro passaggi liberi Maximum solid diameter Passage libre maximum	7 mm
Temperatura massima del liquido Maximum liquid temperature Température maximale du liquide	40°C
Doppia tenuta meccanica Double mechanical seal Double garniture mécanique	SiC/SiC/NBR Carb/Cer/NBR

TIPO POMPA • PUMP TYPE • TYPE DE POMPE

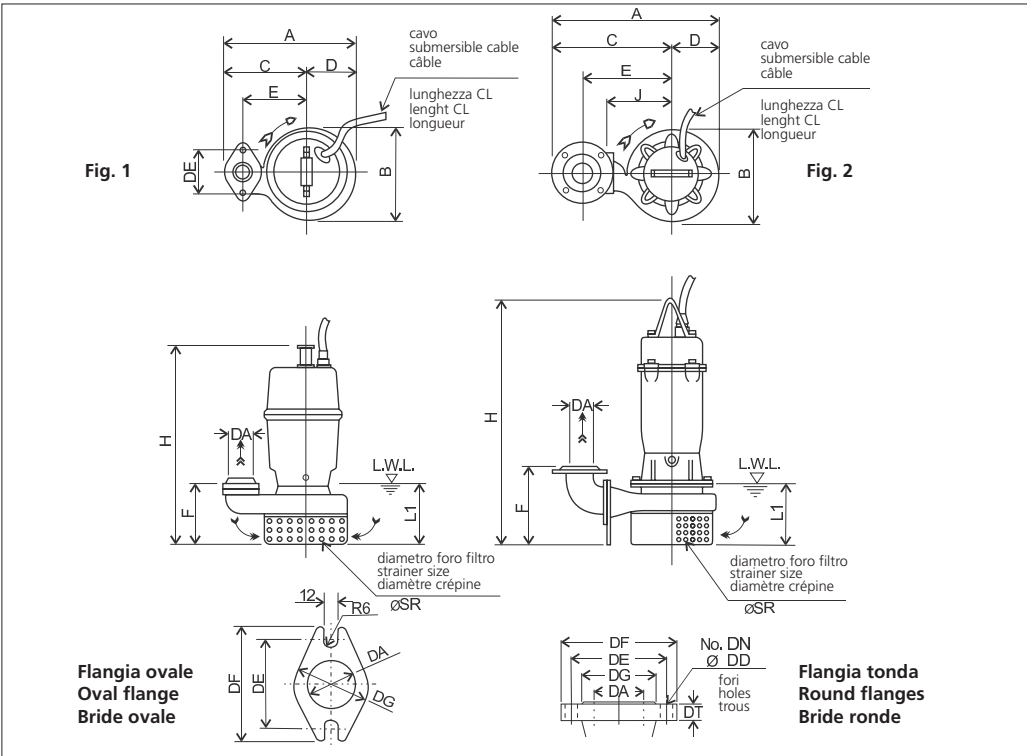
Peso Weight Poids	59 kg	Costruzione Construction Construction	GHISA CAST IRON FONTE
-------------------------	--------------	---	--------------------------------------

MOTORE • MOTOR • MOTEUR

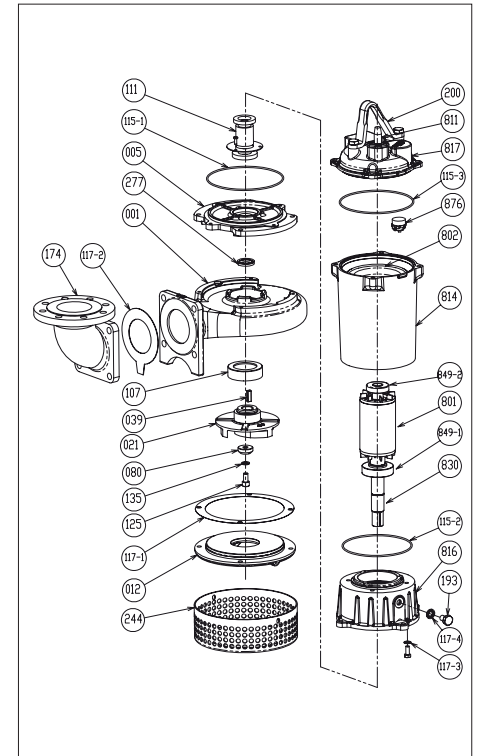
Tensione Power Tension	380/415V ±10% 50 Hz	Cavo Cable Câble	10 m
Avviamento ora Starts per hour Nombre de démarrages par huere	10	P ₂	2.2 kW
Classe di isolamento Insulation class Classe d'isolation	F	Voltaggio Start Current Ampérage au démarrage	380 V 400 V 415 V
Grado di protezione Protection degree Indice de protection	IP 68	Corrente di avviamento Start Current Ampérage au démarrage	28,7 A 30,0 A 31,5 A
		Corrente 100% Current 100% Ampérage 100%	5,10 A 5,00 A 4,60 A
		Velocità di rotazione (rpm) Rotation speed (rpm) Vitesse de rotation (rpm)	2850



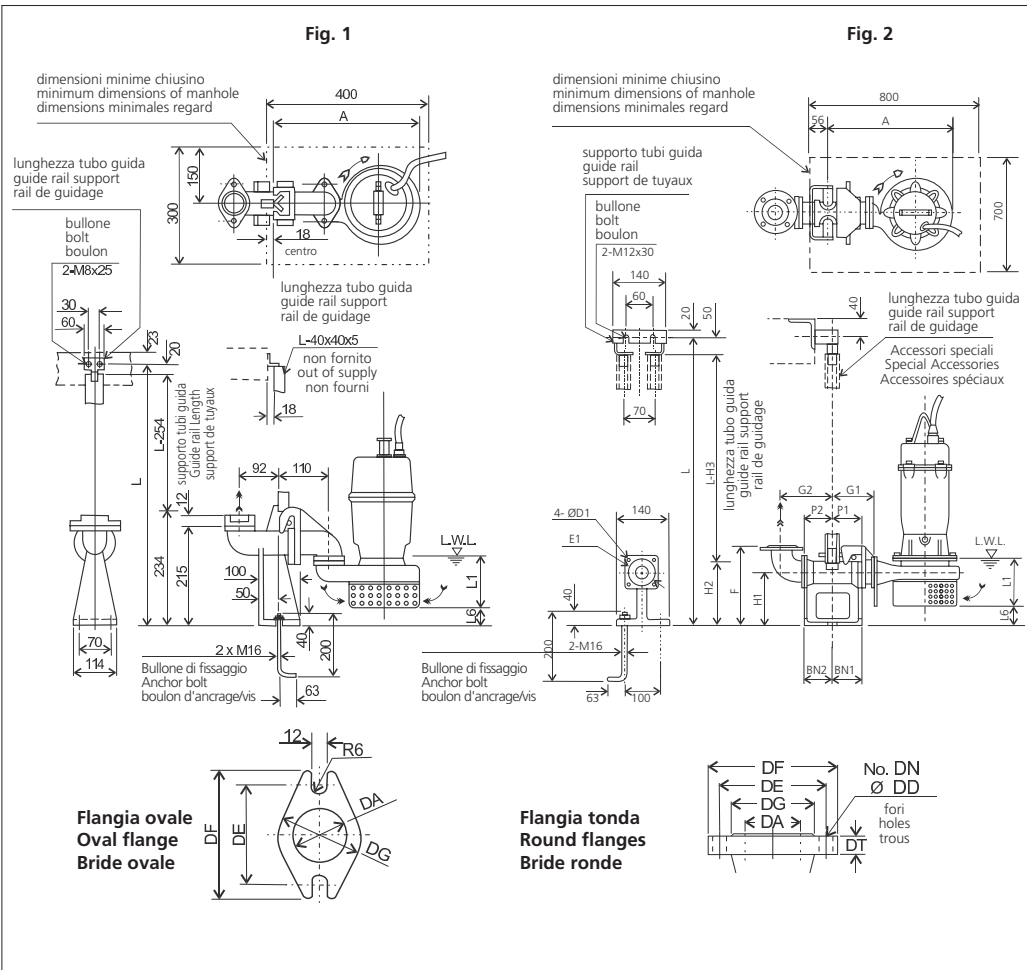
DIMENSIONI • DIMENSIONS • DIMENSIONS



RICAMBI • REPLACEMENT PARTS • PIÈCES DE RECHANGE



001	Corpo pompa - Pump casing - Corps de la pompe
021	Girante - Impeller - Roue
039	Linguetta - Key - Languette
080	Bussola - Bushing - Bague d'usure
107	Anello di rasamento - Wear ring - Anneau arasement
111	Tenuta meccanica - Mechanical seal - Garniture mécanique
115-2	Anello OR - O-ring - Bague OR
115-3	Anello OR - O-ring - Bague OR
115-1	Anello OR - O-ring - Bague OR
117-1	Guarnizione - Gasket - Joint
117-2	Guarnizione - Gasket - Joint
117-3	Guarnizione - Gasket - Joint
135	Rondella - Washer - Rondelle d'étanchiété
277	Anello tenuta - V-ring - Joint de garniture
811	Cavo - Cable - Câble
849-1	Cuscinetto - Bearing - Coussinet
849-2	Cuscinetto - Bearing - Coussinet
876	Termoprotettore - Auto cut - Protection thermique



**MODELLO KIT SCIVOLO DISCESA (QDC)
QDC MODEL
MODÈLE KIT PIED D'ASSISE (QDC)
LM 80**

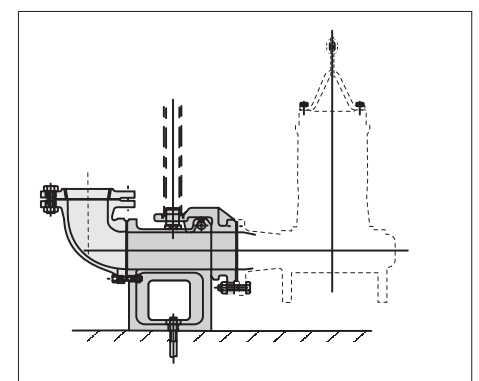


TABELLA DIMENSIONI QDC • QDC DIMENSIONS TABLE • TABLEAU DE DIMENSIONS QDC

DA	Modello / Model / Modèle	Fig.	Tipo Flangia / Flanges type / Type bride	[kW]	DA	A	P1	P2	G1	G2	F	H1	H2	H3	L1 (*)	L6	BN1	BN2	D1	E1	QDC Mod.	[kg]
80	80DS52.2	2	Tonda • Round • Ronde	2.2	80	460	75	90	125	165	285	175	230	280	160	70	75	90	15	155	LM80	17

GIRANTE SEMI-APERTA A RASAMENTO
SEMI-OPEN IMPELLER
ROUE SEMI-OUVERTE

CURVE DI PRESTAZIONE • PERFORMANCE CURVES • COURBES DE PERFORMANCE

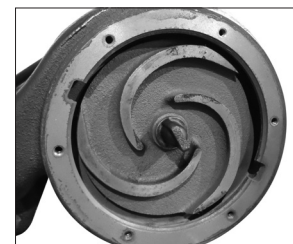
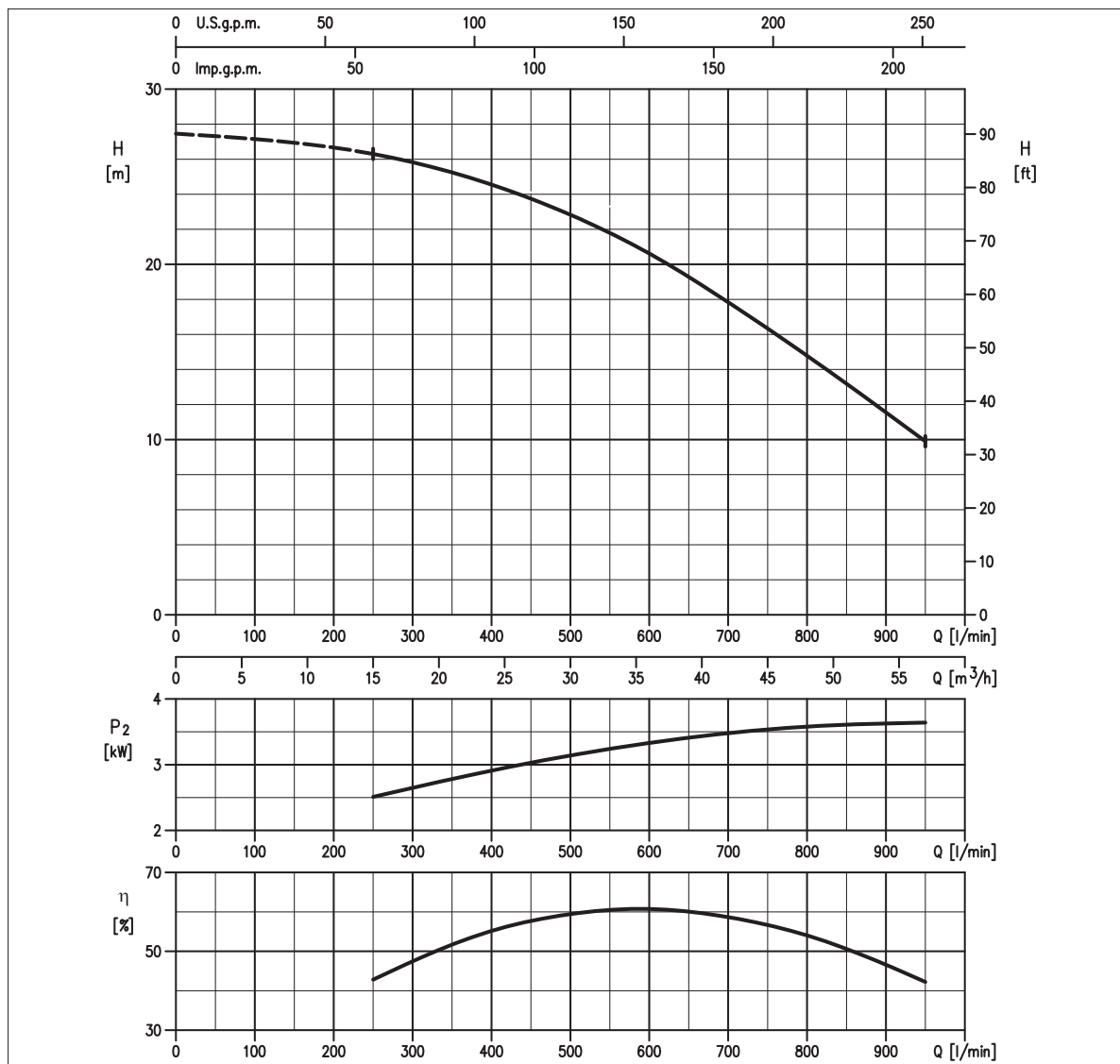


TABELLA PRESTAZIONI • PERFORMANCE TABLE • TABLEAU DE PERFORMANCES

Modello Model Modèle	P ₂		Q = Portata / Flow rate / Débit																				
	[HP]	[kW]	l/min 70 m³/h 4	100 6	150 9	200 12	250 15	300 18	400 24	450 27	473 28	500 30	550 33	580 35	600 36	700 42	800 48	950 57	1000 60	1170 70	1200 72	1250 75	1400 84
80DS53.7	5	3.7	-	-	-	-	26,3	25,8	24,6	23,7	23,3	22,8	21,8	21,2	20,6	17,8	14,8	9,9	-	-	-	-	-

H = Prevalenza / Head / Hauteur manométrique totale [m]

IDRAULICA • HYDRAULIC • HYDRAULIQUE

Girante Impeller Roue	SEMI-APERTA SEMI-OPEN SEMI-OUVERTE
Mandata Flanges Brides	DN 80 mm
Massimo diametro passaggi liberi Maximum solid diameter Passage libre maximum	7 mm
Temperatura massima del liquido Maximum liquid temperature Température maximale du liquide	40°C
Doppia tenuta meccanica Double mechanical seal Double garniture mécanique	SiC/SiC/NBR Carb/Cer/NBR

TIPO POMPA • PUMP TYPE • TYPE DE POMPE

Peso Weight Poids	64 kg	Costruzione Construction Construction	GHISA CAST IRON FONTE
-------------------------	--------------	---	--------------------------------------

MOTORE • MOTOR • MOTEUR

Tensione Power Tension	380/415V ±10% 50 Hz	Cavo Cable Câble	10 m
Avviamento ora Starts per hour Nombre de démarrages par huere	10	P ₂	3.7 kW
Classe di isolamento Insulation class Classe d'isolation	F	Voltaggio Start Current Ampérage au démarrage	380 V 400 V 415 V
Grado di protezione Protection degree Indice de protection	IP 68	Corrente di avviamento Start Current Ampérage au démarrage	51,2 A 51,0 A 53,0 A
		Corrente 100% Current 100% Ampérage 100%	8,80 A 7,80 A 7,80 A
		Velocità di rotazione (rpm) Rotation speed (rpm) Vitesse de rotation (rpm)	2850



DIMENSIONI • DIMENSIONS • DIMENSIONS

Fig. 1

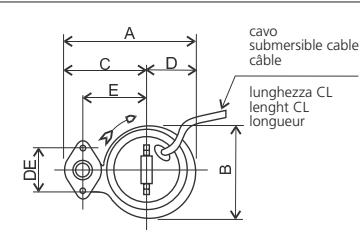
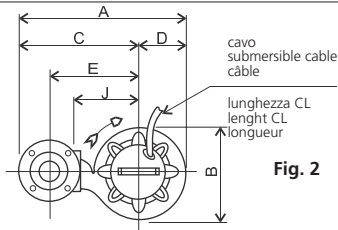
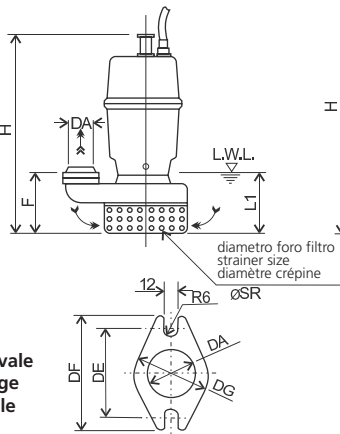


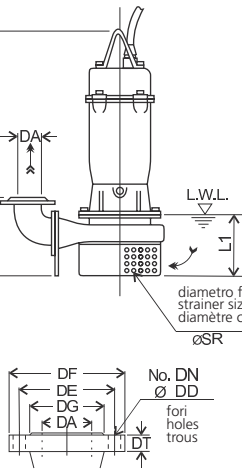
Fig. 2



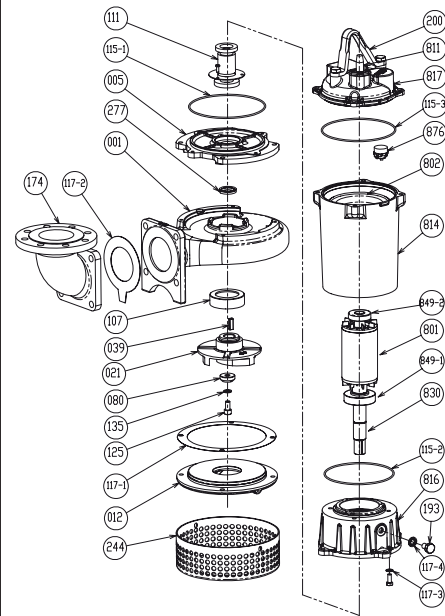
**Flangia ovale
Oval flange
Bride ovale**



**Flangia tonda
Round flanges
Bride tonda**

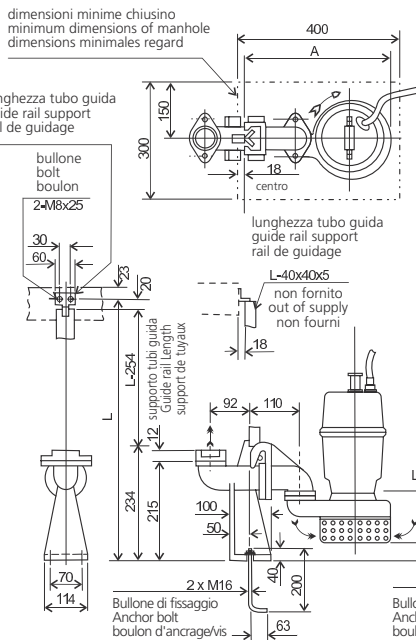


RICAMBI • REPLACEMENT PARTS • PIÈCES DE RECHANGE



001	Corpo pompa - Pump casing - Corps de la pompe
021	Girante - Impeller - Roue
039	Linguetta - Key - Languette
080	Bussola - Bushing - Bague d'usure
107	Anello di rasamento - Wear ring - Anneau arasement
111	Tenuta meccanica - Mechanical seal Garniture mécanique
115-2	Anello OR - O-ring - Bague OR
115-3	Anello OR - O-ring - Bague OR
115-1	Anello OR - O-ring - Bague OR
117-1	Guarnizione - Gasket - Joint
117-2	Guarnizione - Gasket - Joint
117-3	Guarnizione - Gasket - Joint
135	Rondella - Washer - Rondelle d'étanchiété
277	Anello tenuta - V-ring - Joint de garniture
811	Cavo - Cable - Câble
849-1	Cuscinetto - Bearing - Coussinet
849-2	Cuscinetto - Bearing - Coussinet
876	Termoprotettore - Auto cut - Protection thermique

Fig. 1



**Flangia ovale
Oval flange
Bride ovale**

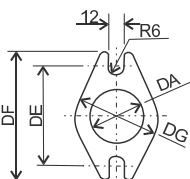
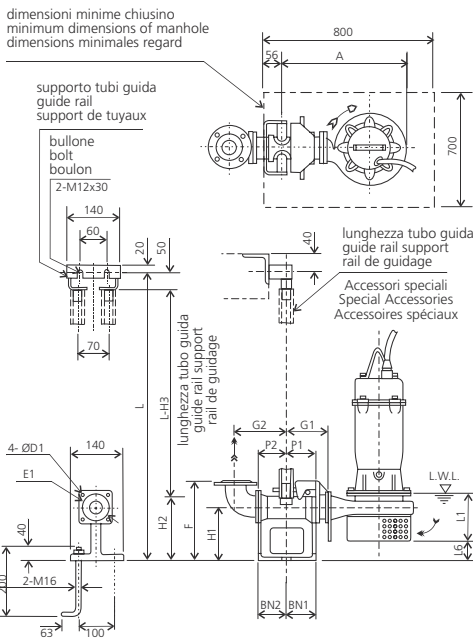
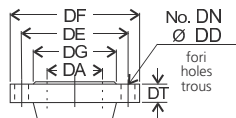


Fig. 2



**Flangia tonda
Round flanges
Bride tonda**



**MODELLO KIT SCIVOLO DISCESA (QDC)
QDC MODEL
MODÈLE KIT PIED D'ASSISE (QDC)
LM 80**

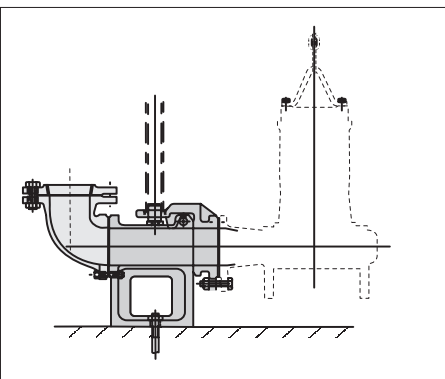


TABELLA DIMENSIONI QDC • QDC DIMENSIONS TABLE • TABLEAU DE DIMENSIONS QDC

DA	Modello Model Modèle	Fig.	Tipo Flangia Flanges type Type bride	[kW]	DA	A	P1	P2	G1	G2	F	H1	H2	H3	L1 (*)	L6	BN1	BN2	D1	E1	QDC Mod.	[kg]
80	80DS53.7	2	Tonda • Round • Ronde	3.7	80	460	75	90	125	165	285	175	230	280	160	70	75	90	15	155	LM80	17

GIRANTE SEMI-APERTA A RASAMENTO SEMI-OPEN IMPELLER ROUE SEMI-OUVERTE

CURVE DI PRESTAZIONE • PERFORMANCE CURVES • COURBES DE PERFORMANCE

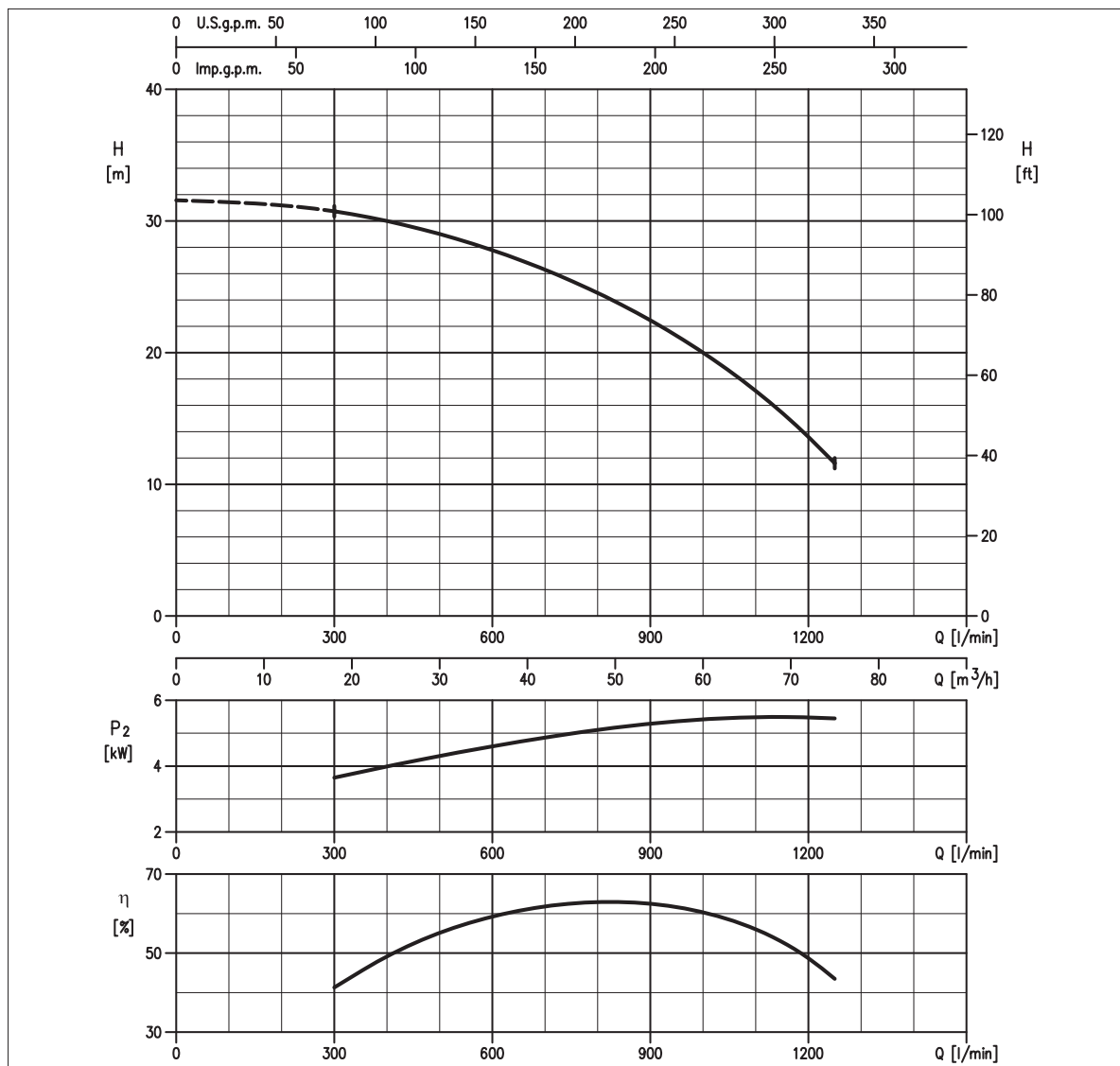


TABELLA PRESTAZIONI • PERFORMANCE TABLE • TABLEAU DE PERFORMANCES

Modello Model Modèle	P ₂		Q = Portata / Flow rate / Débit																				
	[HP]	[kW]	l/min 70 m³/h 4	100 6	150 9	200 12	250 15	300 18	400 24	450 27	473 28	500 30	550 33	580 35	600 36	700 42	800 48	950 57	1000 60	1170 70	1200 72	1250 75	1400 84
100DS55.5	7,5	5,5	-	-	-	-	-	30,7	30	29,5	29,3	29	28,4	28	27,8	26,3	24,5	21,3	20,0	14,8	13,6	11,6	-

H = Prevalenza / Head / Hauteur manometrique totale [m]

IDRAULICA • HYDRAULIC • HYDRAULIQUE

Girante Impeller Roue	SEMI-APERTA SEMI-OPEN SEMI-OUVERTE
Mandata Flanges Brides	DN 100 mm
Massimo diametro passaggi liberi Maximum solid diameter Passage libre maximum	8 mm
Temperatura massima del liquido Maximum liquid temperature Température maximale du liquide	40°C
Doppia tenuta meccanica Double mechanical seal Double garniture mécanique	SiC/SiC/NBR Carb/Cer/NBR

TIPO POMPA • PUMP TYPE • TYPE DE POMPE

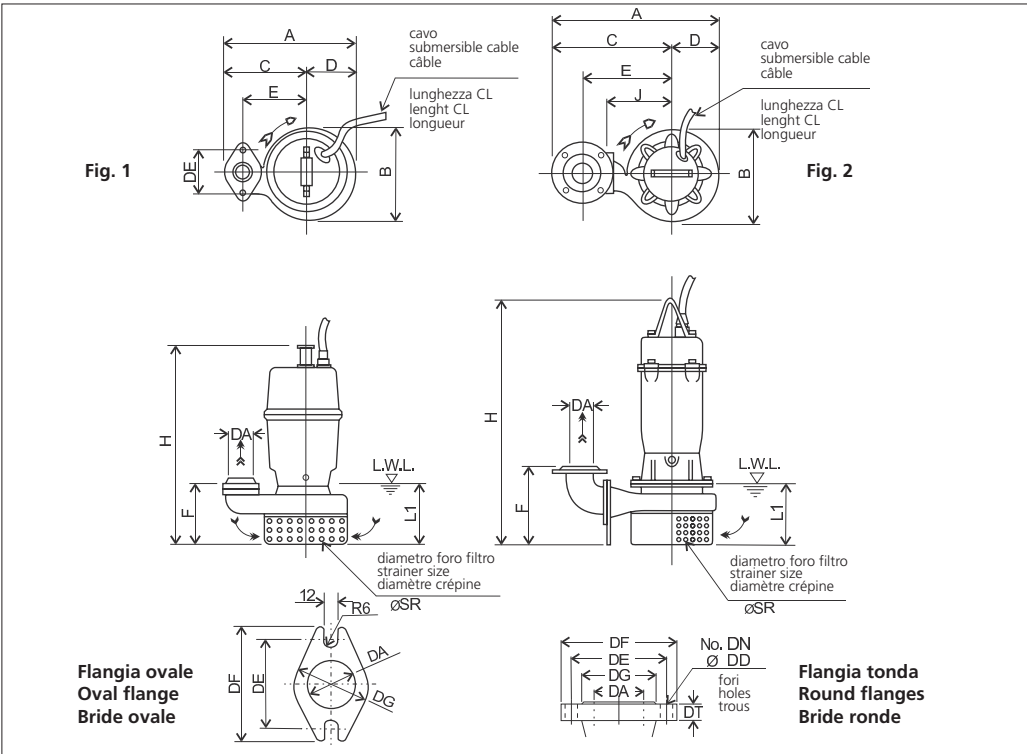
Peso Weight Poids	92 kg	Costruzione Construction Construction	GHISA CAST IRON FONTE
-------------------------	--------------	---	--------------------------------------

MOTORE • MOTOR • MOTEUR

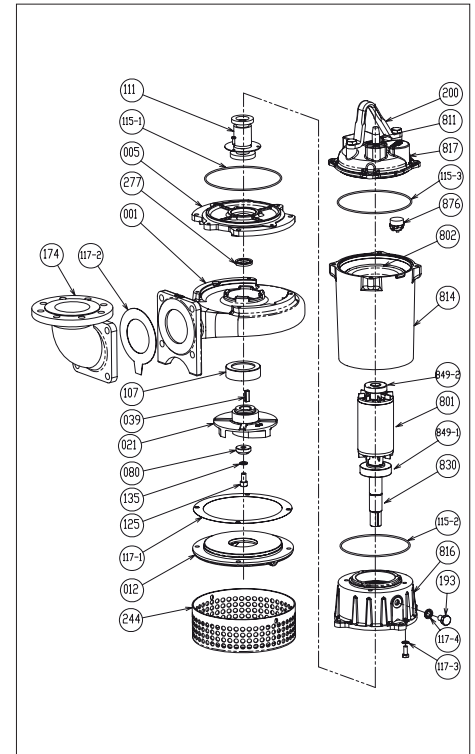
Tensione Power Tension	380/415V ±10% 50 Hz	Cavo Cable Câble	10 m
Avviamento ora Starts per hour Nombre de démarrages par huere	10	P ₂	5.5 kW
Classe di isolamento Insulation class Classe d'isolation	F	Voltaggio Start Current Ampérage au démarrage	380 V 400 V 415 V
Grado di protezione Protection degree Indice de protection	IP 68	Corrente di avviamento Start Current Ampérage au démarrage	77 A 70 A 70 A
		Corrente 100% Current 100% Ampérage 100%	10,8 A 10,8 A 10,3 A
		Velocità di rotazione (rpm) Rotation speed (rpm) Vitesse de rotation (rpm)	2850



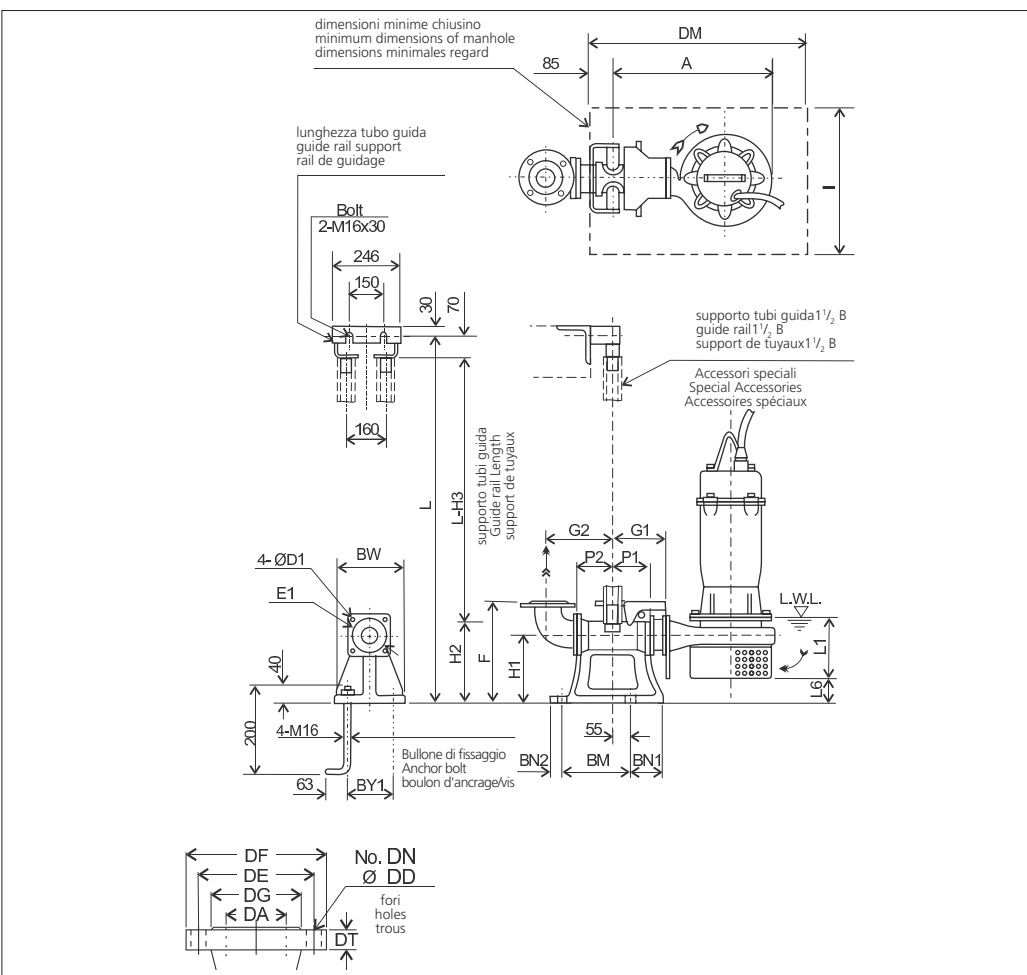
DIMENSIONI • DIMENSIONS • DIMENSIONS



RICAMBI • REPLACEMENT PARTS • PIÈCES DE RECHANGE



001	Corpo pompa - Pump casing - Corps de la pompe
021	Girante - Impeller - Roue
039	Linguetta - Key - Languette
080	Bussola - Bushing - Bague d'usure
107	Anello di rasamento - Wear ring - Anneau arasement
111	Tenuta meccanica - Mechanical seal Garniture mécanique
115-2	Anello OR - O-ring - Bague OR
115-3	Anello OR - O-ring - Bague OR
115-1	Anello OR - O-ring - Bague OR
117-1	Guarnizione - Gasket - Joint
117-2	Guarnizione - Gasket - Joint
117-3	Guarnizione - Gasket - Joint
135	Rondella - Washer - Rondelle d'étanchiéité
277	Anello tenuta - V-ring - Joint de garniture
811	Cavo - Cable - Câble
849-1	Cuscinetto - Bearing - Coussinet
849-2	Cuscinetto - Bearing - Coussinet
876	Termoprotettore - Auto cut - Protection thermique



MODELLO KIT SCIVOLO DISCESA (QDC)
QDC MODEL
MODÈLE KIT PIED D'ASSISE (QDC)
LL 100

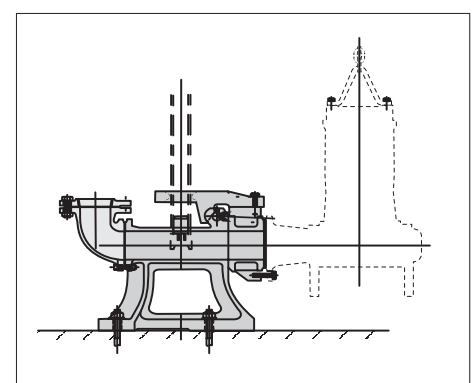


TABELLA DIMENSIONI QDC • QDC DIMENSIONS TABLE • TABLEAU DE DIMENSIONS QDC

DA	Modello Model Modèle	[kW]	A	P1	P2	G1	G2	F	H1	H2	H3	L1 (*)	L6	BN1	BN2	BM	BY1	BW	DM	I	D1	E1	QDC Mod. [kg]	
100	100DS55.5	5.5	590	105	105	185	210	365	240	265	335	200	108	100	40	220	180	230	800	700	19	175	LL100	46

GIRANTE SEMI-APERTA A RASAMENTO SEMI-OPEN IMPELLER ROUE SEMI-OUVERTE

CURVE DI PRESTAZIONE • PERFORMANCE CURVES • COURBES DE PERFORMANCE

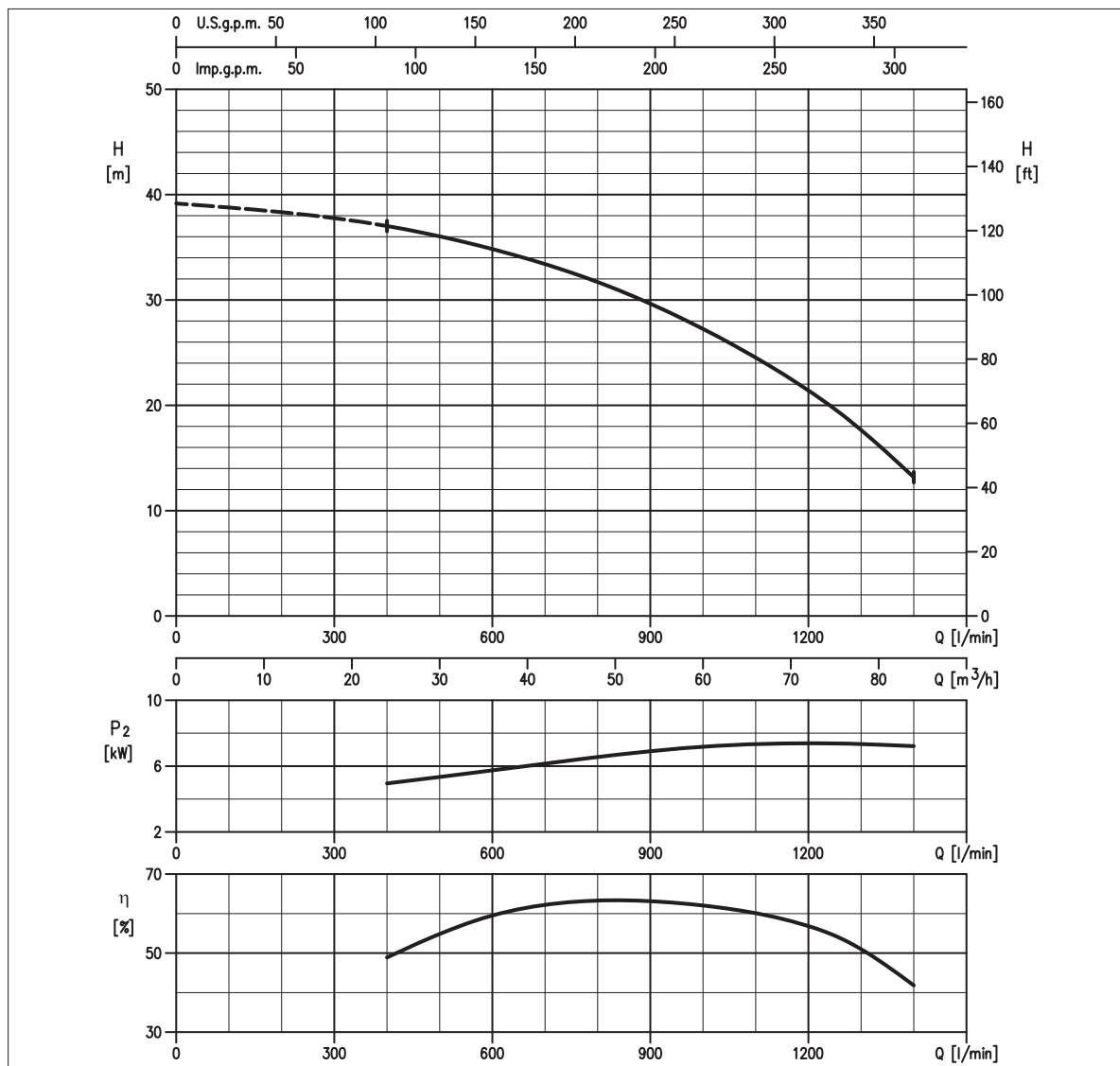


TABELLA PRESTAZIONI • PERFORMANCE TABLE • TABLEAU DE PERFORMANCES

Modello Model Modèle	P ₂		Q = Portata / Flow rate / Débit																				
	[HP]	[kW]	l/min 70 m³/h 4	100 6	150 9	200 12	250 15	300 18	400 24	450 27	473 28	500 30	550 33	580 35	600 36	700 42	800 48	950 57	1000 60	1170 70	1200 72	1250 75	1400 84
100DS57.5	10	7.5	-	-	-	-	-	-	37	36,6	36,3	36	35,5	35,1	34,8	33,4	31,7	28,5	27,3	22,5	21,4	19,7	13,2

H = Prevalenza / Head / Hauteur manometrique totale [m]

IDRAULICA • HYDRAULIC • HYDRAULIQUE

Girante Impeller Roue	SEMI-APERTA SEMI-OPEN SEMI-OUVERTE
Mandata Flanges Brides	DN 100 mm
Massimo diametro passaggi liberi Maximum solid diameter Passage libre maximum	8 mm
Temperatura massima del liquido Maximum liquid temperature Température maximale du liquide	40°C
Doppia tenuta meccanica Double mechanical seal Double garniture mécanique	SiC/SiC/NBR Carb/Cer/NBR

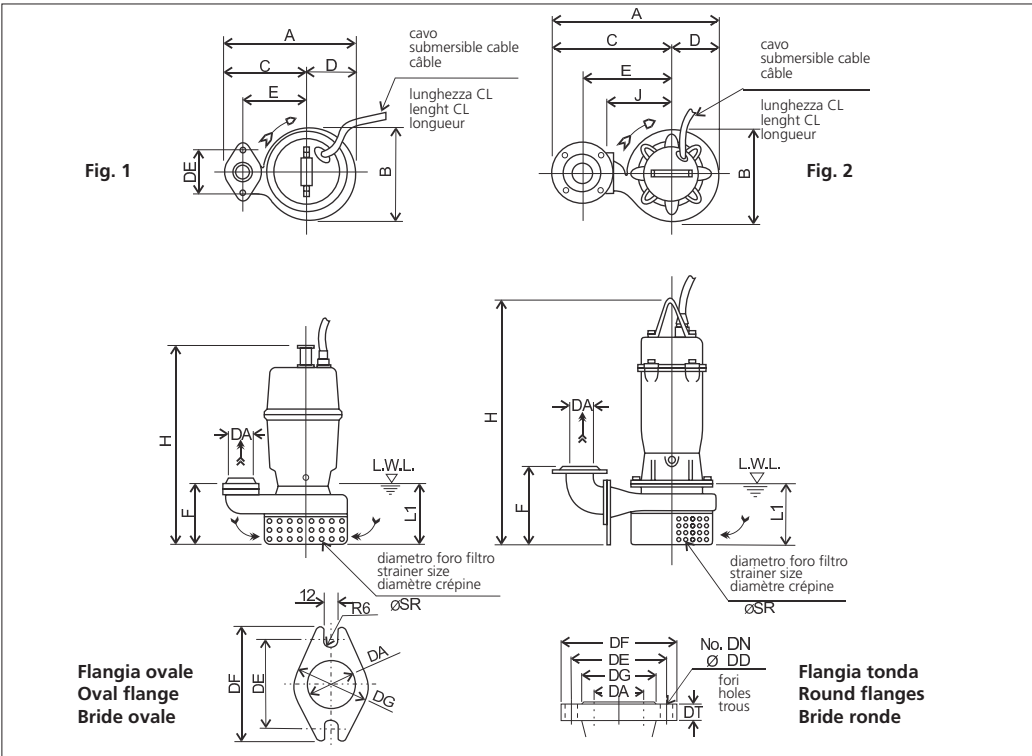
TIPO POMPA • PUMP TYPE • TYPE DE POMPE

Peso Weight Poids	104 kg	Costruzione Construction Construction	GHISA CAST IRON FONTE
-------------------------	---------------	---	--------------------------------------

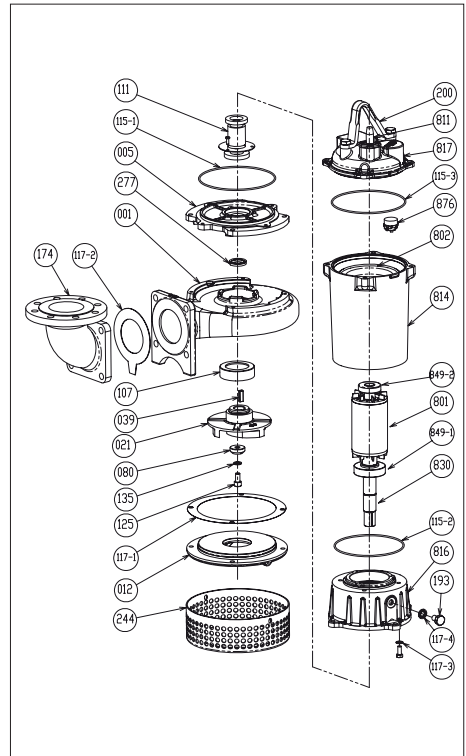
MOTORE • MOTOR • MOTEUR

Tensione Power Tension	380/415V ±10% 50 Hz	Cavo Cable Câble	10 m
Avviamento ora Starts per hour Nombre de démarrages par huere	10	P ₂	7.5 kW
Classe di isolamento Insulation class Classe d'isolation	F	Voltaggio Start Current Ampérage au démarrage	380 V 400 V 415 V
Grado di protezione Protection degree Indice de protection	IP 68	Corrente di avviamento Start Current Ampérage au démarrage	105 A 93,5 A 94 A
		Corrente 100% Current 100% Ampérage 100%	14,8 A 14,3 A 13,2 A
		Velocità di rotazione (rpm) Rotation speed (rpm) Vitesse de rotation (rpm)	2850

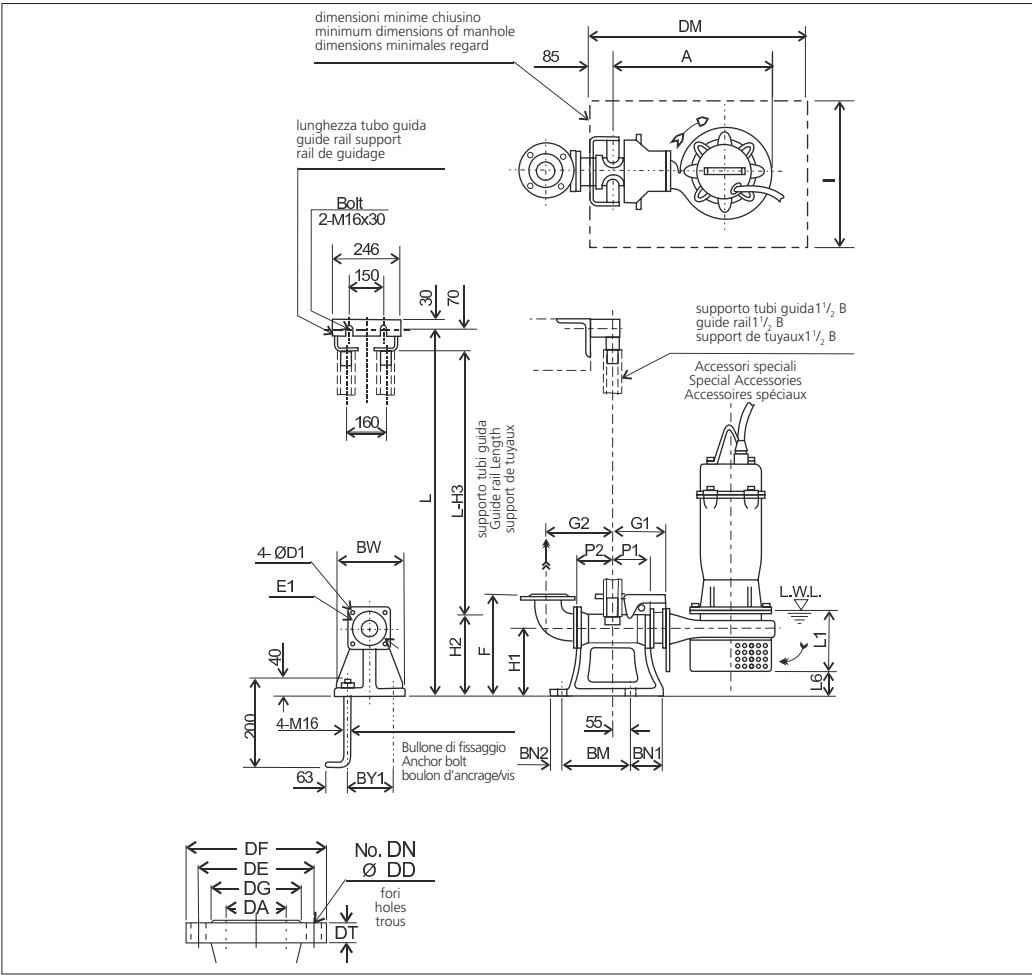
DIMENSIONI • DIMENSIONS • DIMENSIONS



RICAMBI • REPLACEMENT PARTS • PIÈCES DE RECHANGE



001	Corpo pompa - Pump casing - Corps de la pompe
021	Girante - Impeller - Roue
039	Linguetta - Key - Languette
080	Bussola - Bushing - Bague d'usure
107	Anello di rasamento - Wear ring - Anneau arasement
111	Tenuta meccanica - Mechanical seal Garniture mécanique
115-2	Anello OR - O-ring - Bague OR
115-3	Anello OR - O-ring - Bague OR
115-1	Anello OR - O-ring - Bague OR
117-1	Guarnizione - Gasket - Joint
117-2	Guarnizione - Gasket - Joint
117-3	Guarnizione - Gasket - Joint
135	Rondella - Washer - Rondelle d'étanchiété
277	Anello tenuta - V-ring - Joint de garniture
811	Cavo - Cable - Câble
849-1	Cuscinetto - Bearing - Coussinet
849-2	Cuscinetto - Bearing - Coussinet
876	Termoprotettore - Auto cut - Protection thermique



MODELLO KIT SCIVOLO DISCESA (QDC)
QDC MODEL
MODÈLE KIT PIED D'ASSISE (QDC)
LL 100

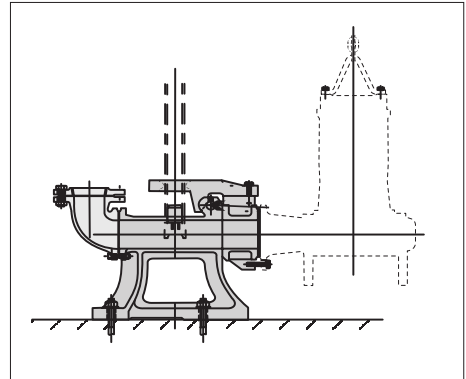


TABELLA DIMENSIONI QDC • QDC DIMENSIONS TABLE • TABLEAU DE DIMENSIONS QDC

DA	Modello Model Modèle	[kW]	A	P1	P2	G1	G2	F	H1	H2	H3	L1 (*)	L6	BN1	BN2	BM	BY1	BW	DM	I	D1	E1	QDC Mod. [kg]	
100	100DS57.5	7.5	590	105	105	185	210	365	240	265	335	200	108	100	40	220	180	230	800	700	19	175	LL100	46