

Technical
specification



Flygt D 8058, 50 Hz

Table of Contents

D 8058.....	2
Product.....	2
Denomination.....	2
Process data.....	2
Motor data.....	2
Cable.....	2
Monitoring equipment.....	3
Material.....	3
Weight.....	3
Option.....	3
Accessories.....	3
LT-Motor rating and performance curve.....	4
HT-Motor rating and performance curve.....	5
Dimensional drawing.....	5

D 8058

Product

Stainless steel submersible pump used for corrosive wastewater containing solids or long-fibred material.

Denomination

Product code	8058.280
Installation	P, S
Impeller characteristics	LT, HT

Process data

Liquid temperature-standard	max +40 °C
Depth of immersion	max 20 m
The pH of the pumped liquid	2 -14
Liquid density	max. 1100 kg/m ³

Motor data

Frequency	50 Hz
Insulation class	H (+180 °C)
Voltage variation	
- continuously running	max ± 10 %
- intermittent running	max ± 10 %
Voltage imbalance between phases	max 2 %
No. of starts/hour	max 30

Cable

Direct-on-line start

SUBCAB [®]	4G4+2x1,5 mm ² 7G2,5 mm ²
---------------------	--

Y/D start

SUBCAB [®]	7G2,5+2x1,5 mm ² 4G2.5+2x1,5 mm ² / 7G2,5 mm ²
---------------------	--

Monitoring equipment

Thermal contacts opening temp.

125 °C

Material

General

Item	Material	Typical Flygt Material No.	Standard Europe	Standard USA
Impeller	Stainless steel	M0344.2343.02	EN 10088-2 and -3:1995	ASTM/AISI 316L and 316Ti
Pump housing	Stainless steel	M0344.2343.02	EN 10088-2 and -3:1995	ASTM/AISI 316L and 316Ti
Stator housing	Stainless steel	M0344.2343.02	EN 10088-2 and -3:1995	ASTM/AISI 316L and 316Ti
Shaft	Stainless steel	M0344.2343.02	EN 10088-2 and -3:1995	ASTM/AISI 316L and 316Ti

O-rings

Alternative	Material
1	Fluorinated rubber

Mechanical face seals

Alternative	Inner seal	Outer seal
1	Aluminum oxide/carbon	Silicon carbide/ silicon carbide

Weight

See dimensional drawing.

Option

Other cables

Water Detector in motor and oil housing

FLS leakage detector in stator housing

Flexible protective sheeting for cable

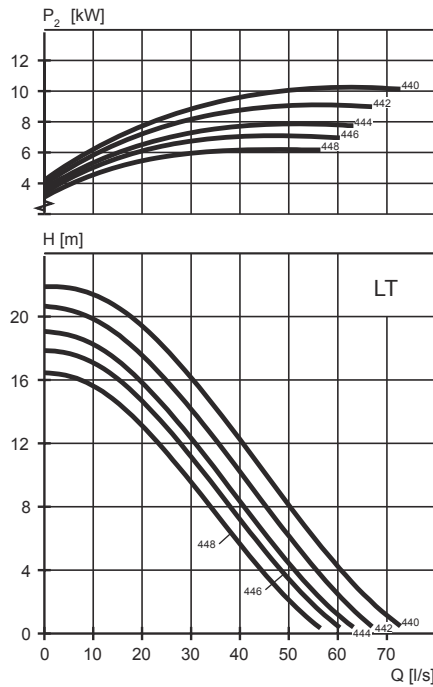
Accessories

Discharge connections, adapters, hose connections and other mechanical accessories.

Electrical accessories such as pump controller, control panels, starters, monitoring relays, cables.

See separate booklet or www.xylem.com, for further information.

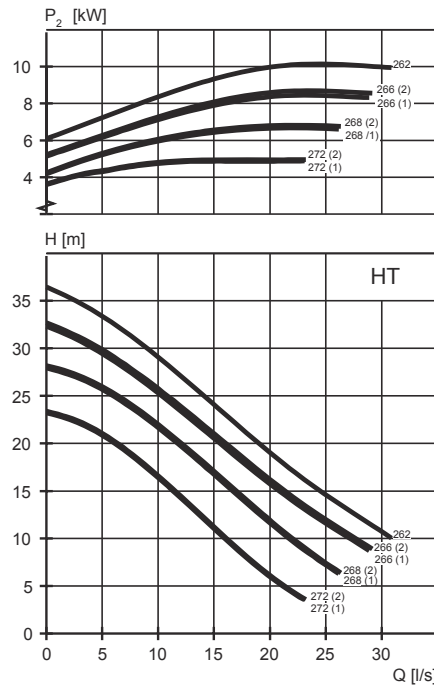
LT-Motor rating and performance curve



Curve/ Impeller No	Rated power, kW (hp)	Rated current, A	Starting current, A	Power factor cos j	Ex proof version available	Installation	
						P	S
400 V, 50 Hz, 3~, 1425 r/min							
440	10.5 (14.1)	21	124	0.84		•	•
442	10.5 (14.1)	21	124	0.84		•	•
444	10.5 (14.1)	21	124	0.84		•	•
446	10.5 (14.1)	21	124	0.84		•	•
448	10.5 (14.1)	21	124	0.84		•	•

Y/D starting current is approximately 1/3 of D starting current.

HT-Motor rating and performance curve



Curve/ Impeller No	Rated power, kW (hp)	Rated current, A	Starting current, A	Power factor cos j	Ex proof version available	Installation	
						P	S
400 V, 50 Hz, 3~, 2890 r/min							
262	13 (17.4)	24	159	0.90		•	•
266 (2)	13 (17.4)	24	159	0.90		•	•
268 (2)	13 (17.4)	24	159	0.90		•	•
272 (2)	13 (17.4)	24	159	0.90		•	•
400 V, 50 Hz, 3~, 2895 r/min							
266 (1)	9.0 (12.1)	17	124	0.87		•	•
268 (1)	9.0 (12.1)	17	124	0.87		•	•
272 (1)	9.0 (12.1)	17	124	0.87		•	•

Y/D starting current is approximately 1/3 of D starting current.

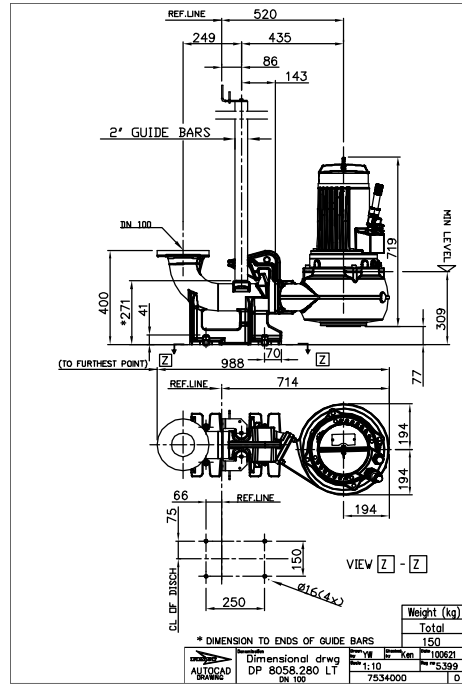
Dimensional drawing

All drawings are available as Acrobat documents (.pdf) and AutoCad drawings (.dwg). Download the drawings from www.xylem.com or contact your local Xylem representative for more information.

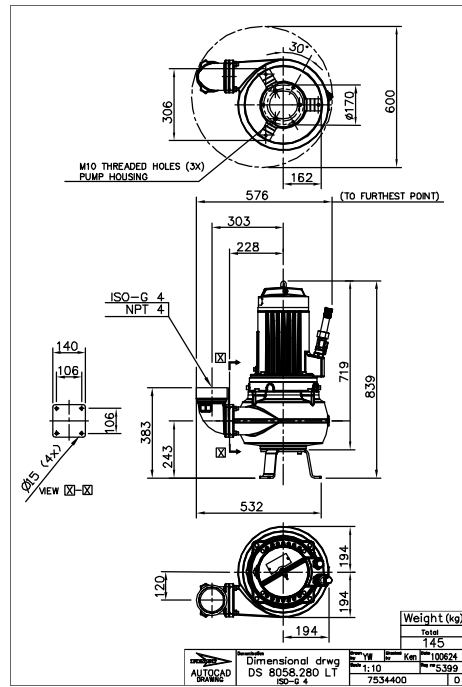
All dimensions are in mm.

D 8058

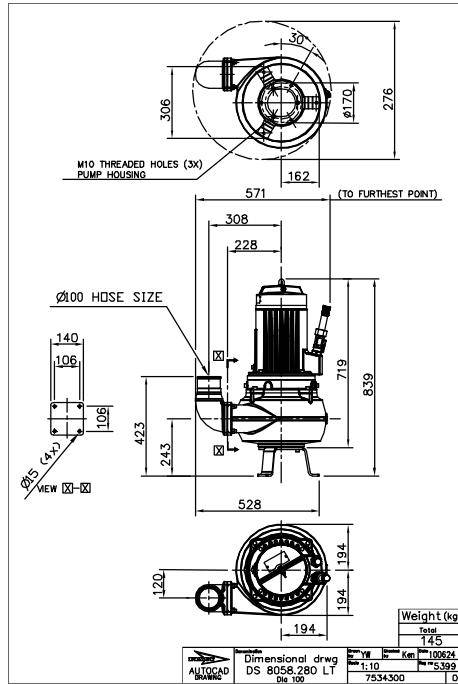
LT, P-installation



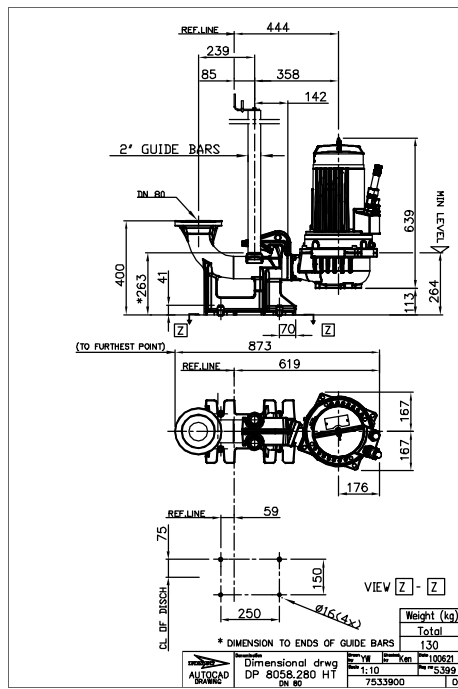
LT S-installation



LT S-installation

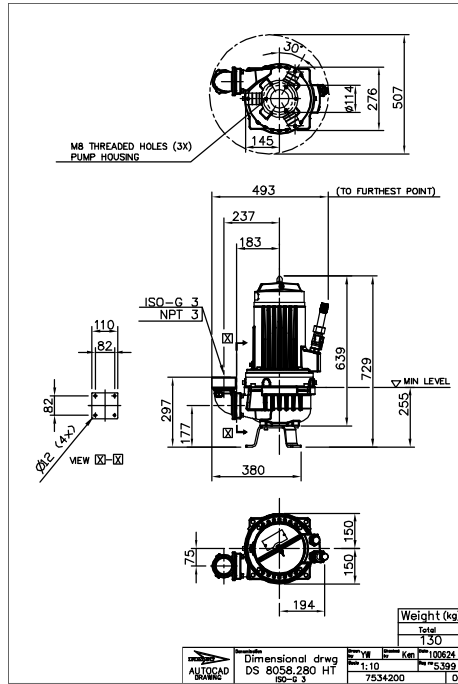


HT, P-installation



D 8058

HT, S-installation



HT, S-installation

