

## 201, 301, 303

Submersible pumps, waste water pumps for cellar draining

60 Hz



Ama-Drainer 201 SE



Ama-Drainer 301 SE



Ama-Drainer 303 SE

### Fields of application

Standard version : pumping of clear or waste water:

- pumping of water from sumps, wells, yards and flooded cellars,
- pumping of domestic sewage (washing machines, dish washers; showers, services),
- pumping of water from rivers and tanks.

#### Version C : aggressive water

- Pumping of sea water, salt water, briny water.

### Operating characteristics

Q : up to 14 m<sup>3</sup>/h (3.8 l/s)

H : up to 12 m

t° max : 50 °C on continuous duty.

Free passage : 4 mm for AD 201.

10 mm for AD 301 and 303.

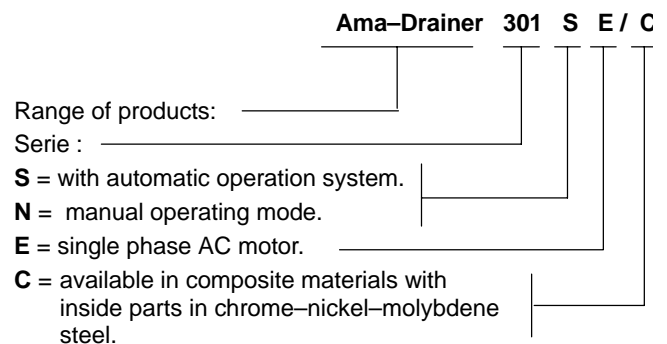
### Pump type

Submersible pumps, pumping of waste water from cellars

#### Motor:

- AC single phase motor
- Self cooling through pumped liquid
- Integrated thermal protection
- cable with plug and earth connection
- Protection: IP 68
- In accordance with EN 12 050-2/CE standard.

### Designation

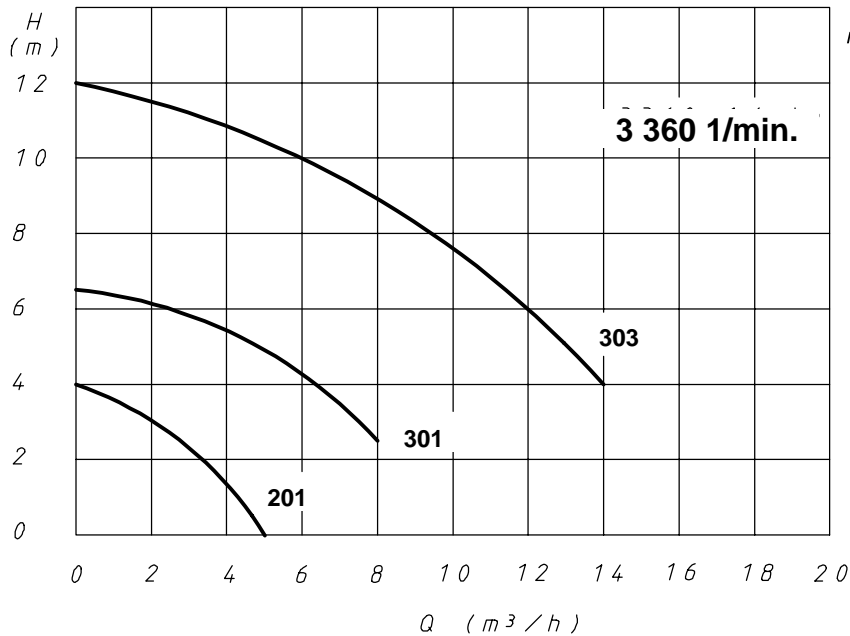
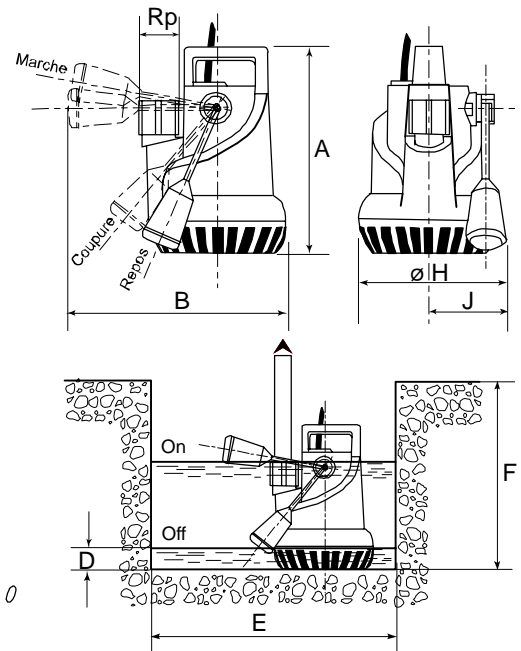


### Matériaux

	Standard	Version C
Pump casing :	Polypropylene	Polypropylene
Motor frame :	CrNi steel	CrNiMo steel
Shaft :	Cr steel	CrNiMo steel
AD 201 & 301 - Impeller :	Polypropylene	Polypropylene
AD 303 - Impeller :	Noryl	Noryl

### Advantages offered by the Ama-Drainer pump:

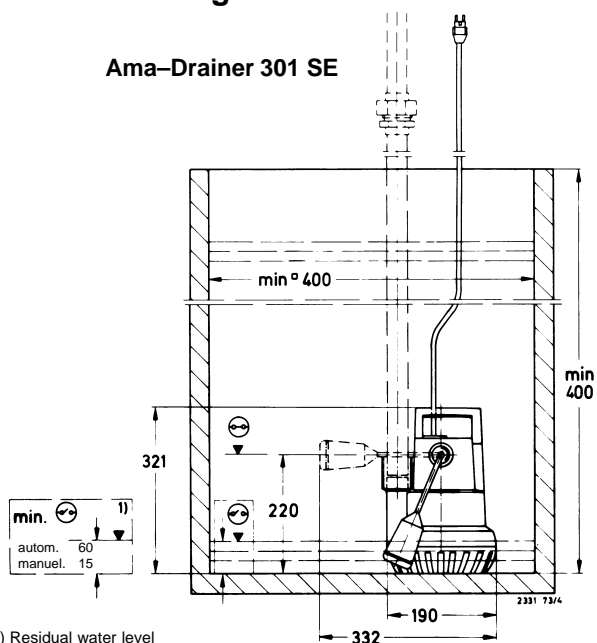
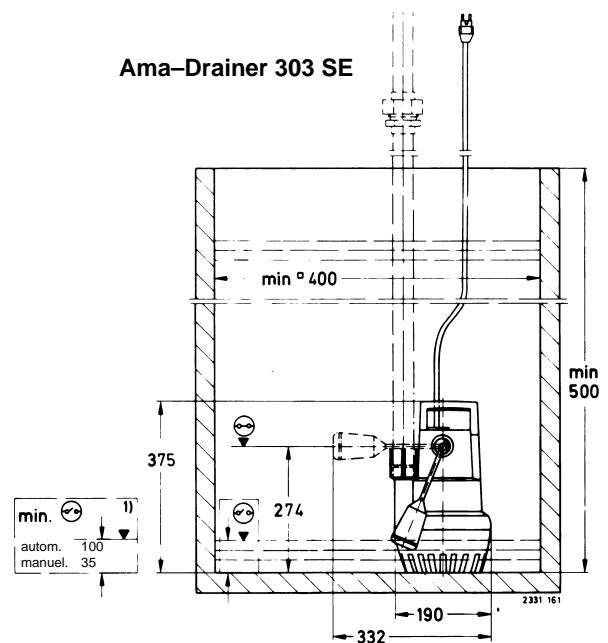
- Transportable
- Automatic operating mode
- Adjustable starting float
- Full tightness of the pumps: starting via a magnetic contact (KSB patent)
- Thermal protection against dry operating conditions, repeated startings or pump blocking
- Incorporated non return valve
- Simple installation
- Ready for connection
- No servicing

**Hydraulic data**

**Dimensions**

**Electric data - Dimensions**
**Ama-Drainer: standard version for waste water pumping**

Ama-Drainer	Plug connection type	Rp	Solids max	P <sub>1</sub>	Current 1~230V	Cable length	A	B	D min manual	E min	F min	Ø H	J	Weight	Ident. nr
			mm	W	Amp	m	mm	mm	mm	mm	mm	mm	mm	kg	
201 SE	CE	1"	4	300	1.3	3	260	250	4	380	360	165	120	3.4	40 982 178
301 SE	CE	1" 1/4	10	430	1.8	3	321	332	15	400	400	190	130	4.1	40 981 752
301 SE/NE	CE	1" 1/4	10	430	1.8	10	321	332	15	400	400	190	130	5.0	40 981 773
301 SE	UK	1" 1/4	10	430	1.8	5	321	332	15	400	400	190	130	4.3	40 981 951
303 SE	UK	1" 1/4	10	800	3.5	5	375	332	35	400	500	190	130	5.7	39 300 015

**Ama Drainer C : special version for aggressive water pumping**

301 SE/NE/C	CE	1" 1/4	10	430	1.8	10	321	332	15	400	400	190	130	5.0	40 981 774
-------------	----	--------	----	-----	-----	----	-----	-----	----	-----	-----	-----	-----	-----	------------

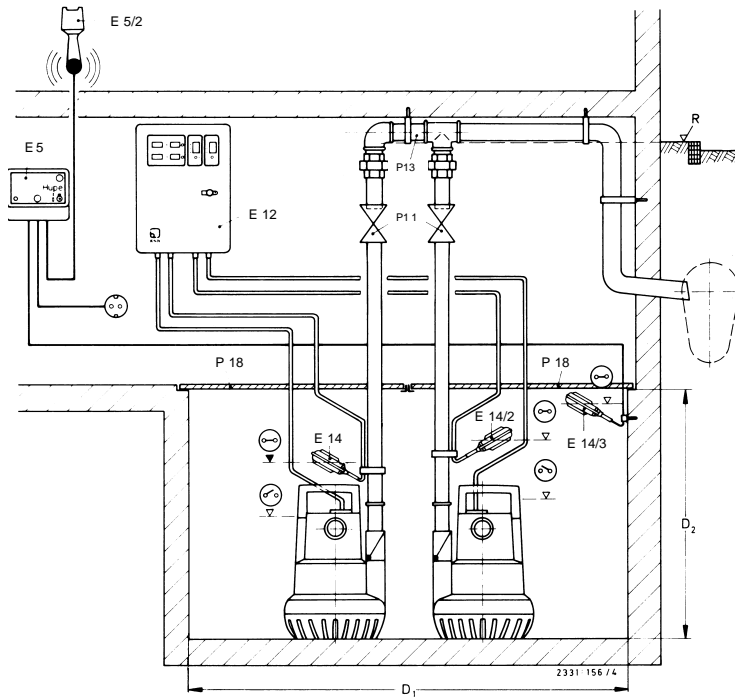
**Caution: For Saudi Arabia to use the versions with the plug connection U.K.**
**Installation diagrams**
**Ama-Drainer 301 SE**

**Ama-Drainer 303 SE**


1) Residual water level

**Typical Installation of Duplex Pumping Station  
with Ama-Drainer 301 NE, 303 NE**

mm

Ama-Drainer	D <sub>1</sub>	D <sub>2</sub>
<b>301</b>	1060 (x 500)	400
<b>303</b>	1060 (x 500)	500



- P 11 Gate valve
- P 13 Y-pipe
- P 18 Cover plate
- E 5 Alarm switchgear AS 5
- E 5/2 Horn
- E 12 Switchgear
- E 14 Float switch, normal water level
- E 14/2 Float switch, high water level
- E 14/3 Alarm contactor
- R Backwash level

**Chemical Resistance Chart for Drainage Duties**

Medium handled	Ama-Drainer		Medium handled	Ama-Drainer	
	Standard design	Variant C		Standard design	Variant C
Antifreeze	x		Sodium nitrate	x	
Antifrogen-water mixture	x		Sodium perborate	x	
Beer	x		Sodium sulphate	x	
Butter milk	x		Soy-bean oil	x	
Calcium acetate	x		Spirits	x	
Calcium hydroxide	x		Trisodium phosphate	x	
Castor oil	x		Uric acid	x	
Cider	x		Vaseline	x	
Coconut oil	x		Vinegar		x
Condensed milk	x		Washing machine lye	x	
Corn oil	x		Whey	x	
Deionized water	x				
Edible oil	x		<b>Water:</b>		
Edible vinegar		x	Boiler water	x	
Ethylene glycol	x		Condensate	x	
Glycerine	x		Cooling water	x	
Glycol	x		Drainage water	x	
Grisiron <sup>®</sup>	x		Fire-extinguishing water	x	
Lemonades	x		Fully desalinated water		x
Liquid fertilizer	x		Heating water	x	
Milk	x		Lime water		x
Peanut oil	x		Partly desalinated water	x	
Polyglycol	x		Pure water	x	
Potassium carbonate	x		Raw water	x	
Potassium hydroxide	x		Salt water		x
Rape oil	x		Sea water		x
Silage percolating juice		x	Swimming pool water		x
Silicone oil	x				
Sodium carbonate	x				
Sodium chloride up to a concentration of 3 %		x			
Sodium hydrogen phosphate (turbid)	x				

**Product Features**

**To Our Customers' Benefit**

**Ama-Drainer 303 SE**

**Broad range of submersible motor pumps**

**Your benefit:**

- Optimum adjustment to the actual requirements taking into account economic aspects
- Design is matched to the fluid pumped (for waste water or aggressive water)

**Cable with plug-type connector**

**Your benefit:**

- Easy and fast replacement

**Solenoid float switch (European patent)**

**Your benefit:**

- Wear-resistant and reliable
- No casing passage, therefore absolutely tight
- Variable level control settings and anti-overwinding device
- Easy adjustment to external control system by means of locking disc

**Integrated swing check valve**

**Your benefit:**

- Prevents the discharge line from running empty

**Vertical discharge nozzle**

**Your benefit:**

- Easy installation
- Low space requirement
- No need for additional components such as elbows

**Integrated motor protection**

**Your benefit:**

- Prevents motor overloads

**Triple shaft seal with sealing liquid lubrication**

**Your benefit:**

- Safely isolates the motor from water
- Lubricates the seal faces under dry-running conditions

**Jacket cooling of motor**

**Your benefit:**

- Permits operation even when only partly submerged

**High-quality plastic casing with stable handle**

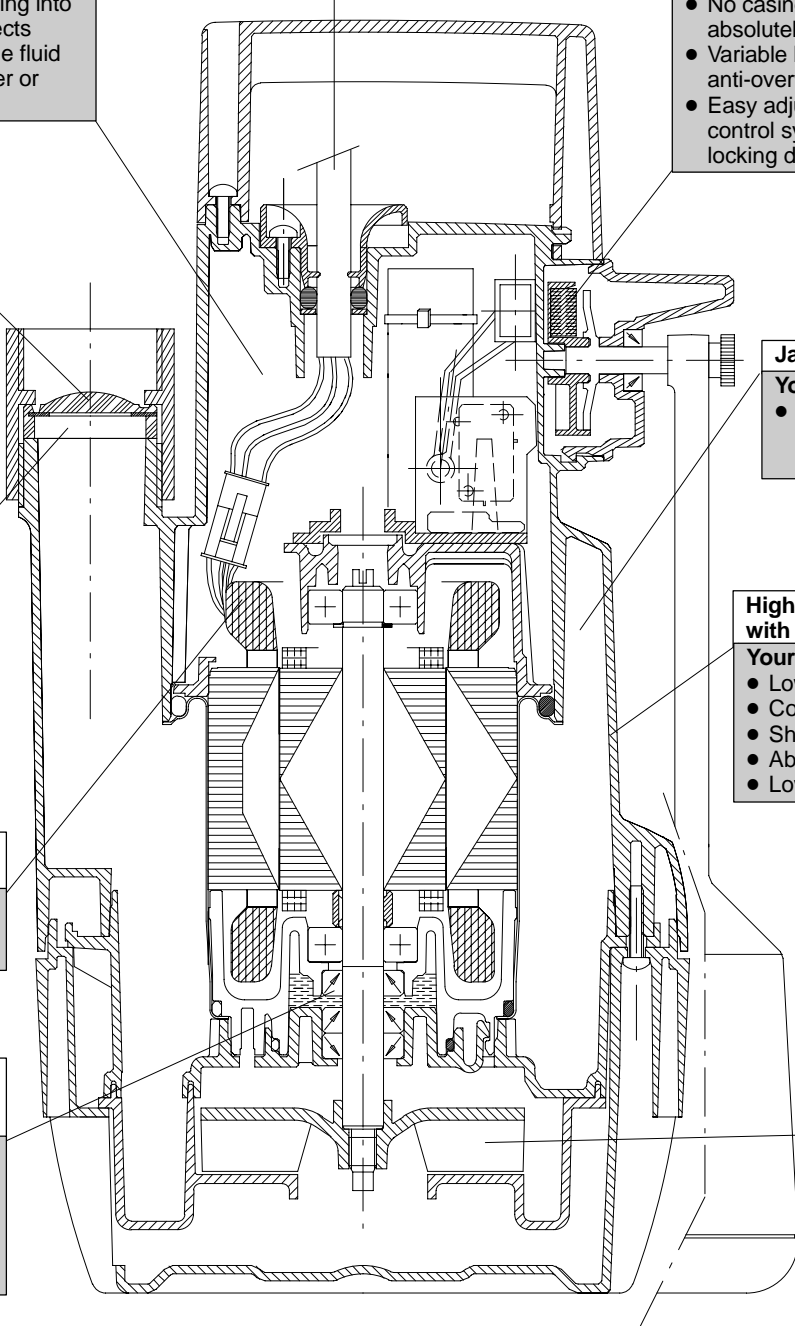
**Your benefit:**

- Low weight
- Corrosion-resistant
- Shock-resistant
- Abrasion-resistant
- Low-noise operation

**Optimised hydraulic systems and motors**

**Your benefit:**

- Large pump output at high efficiency Wirkungsgrad
- Economic operation



Subject to technical modifications

09/2006

2331.56-10



**motralec**

4 rue Lavoisier . ZA Lavoisier . 95223 HERBLAY CEDEX  
Tél. : 01.39.97.65.10 / Fax. : 01.39.97.68.48  
Demande de prix / e-mail : service-commercial@motralec.com

[www.motralec.com](http://www.motralec.com)